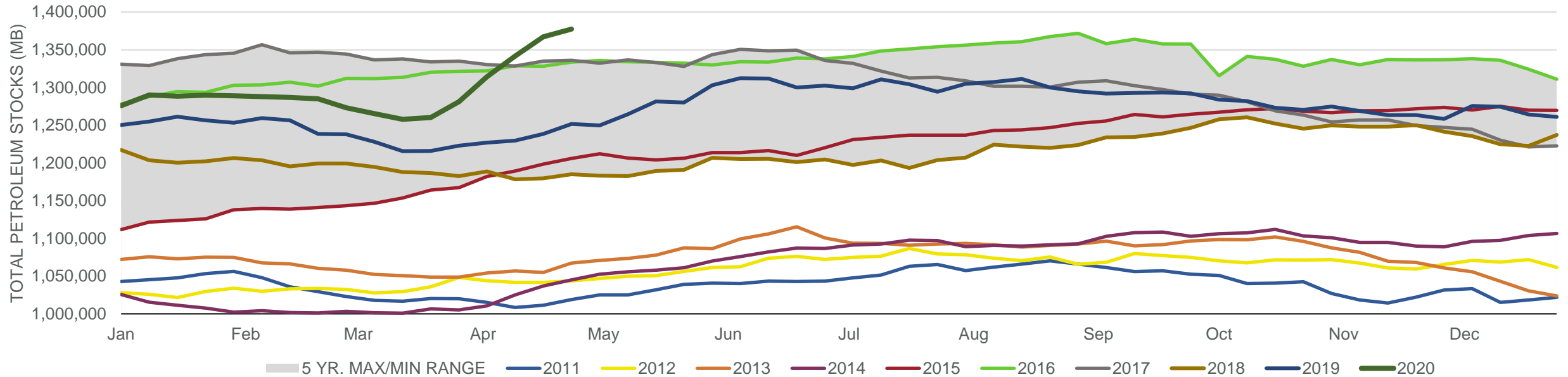
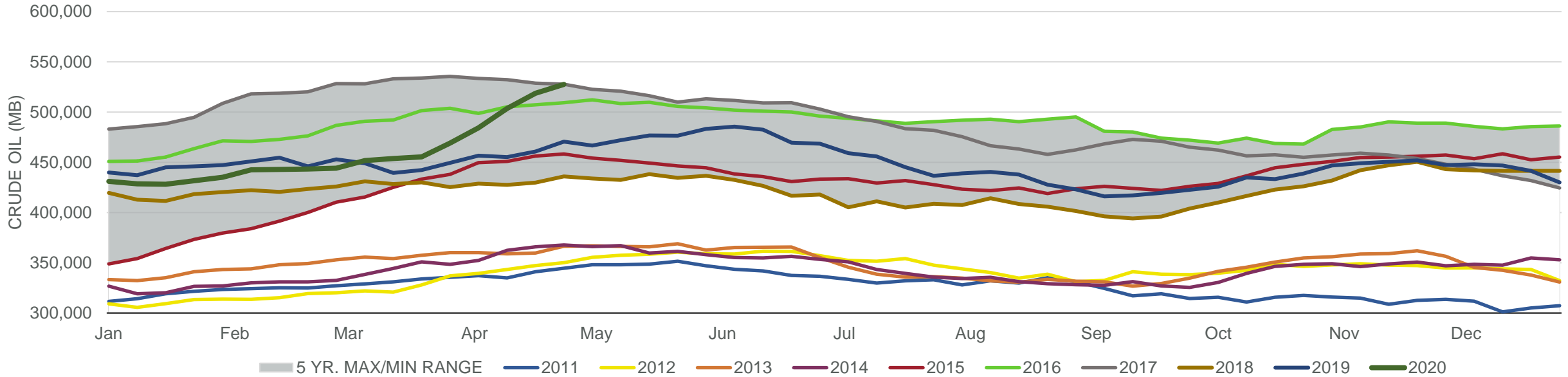


Total Petroleum Stocks



Week Ending	WTI	Change	GC Gaso	Change	NY No 2	Change	Crude	Change	Gasoline	Change	Distillate	Change	Kero	Change	Resid	Change	Total Stocks	Change
3/27/2020	\$20.24	(\$6.40)	\$0.44	(\$0.27)	\$1.03	\$0.00	469,193	13,833	246,806	7,524	122,248	(2,194)	38,268	(1,320)	34,405	18	1,281,285	20,999
4/3/2020	\$19.11	(\$1.13)	\$0.47	\$0.03	\$0.98	(\$0.05)	484,370	15,177	257,303	10,497	122,724	476	38,861	593	35,980	1,575	1,314,332	33,047
4/10/2020	\$25.20	\$6.09	\$0.56	\$0.09	\$1.02	\$0.03	503,618	19,248	262,217	4,914	129,004	6,280	40,239	1,378	34,586	(1,394)	1,341,573	27,241
4/17/2020	\$20.12	(\$5.08)	\$0.59	\$0.03	\$0.94	(\$0.08)	518,640	15,022	263,234	1,017	136,880	7,876	40,792	553	35,690	1,104	1,367,104	25,531
4/24/2020	\$3.32	(\$16.80)	\$0.51	(\$0.08)	\$0.74	(\$0.20)	527,631	8,991	259,565	(3,669)	141,972	5,092	39,695	(1,097)	35,338	(352)	1,377,513	10,409

Commercial Crude Oil Stocks



Week Ending	WTI	Change	Production	Change	Imports	Change	Exports	Change	Capacity	Inputs	Change	Utilization	Crude Oil Stocks	Change
3/27/2020	\$20.24	(\$6.40)	13,000	0	6,047	(70)	3155	(695)	18,125	14,898	(940)	82.3%	469,193	13,833
4/3/2020	\$19.11	(\$1.13)	12,400	(600)	5,874	(173)	2833	(322)	18,125	13,634	(1,264)	75.6%	484,370	15,177
4/10/2020	\$25.20	\$6.09	12,300	(100)	5,680	(194)	3436	603	18,125	12,665	(969)	69.1%	503,618	19,248
4/17/2020	\$20.12	(\$5.08)	12,200	(100)	4,937	(743)	2890	(546)	18,125	12,456	(209)	67.6%	518,640	15,022
4/24/2020	\$3.32	(\$16.80)	12,100	(100)	5,302	365	3302	412	18,125	12,761	305	69.6%	527,631	8,991