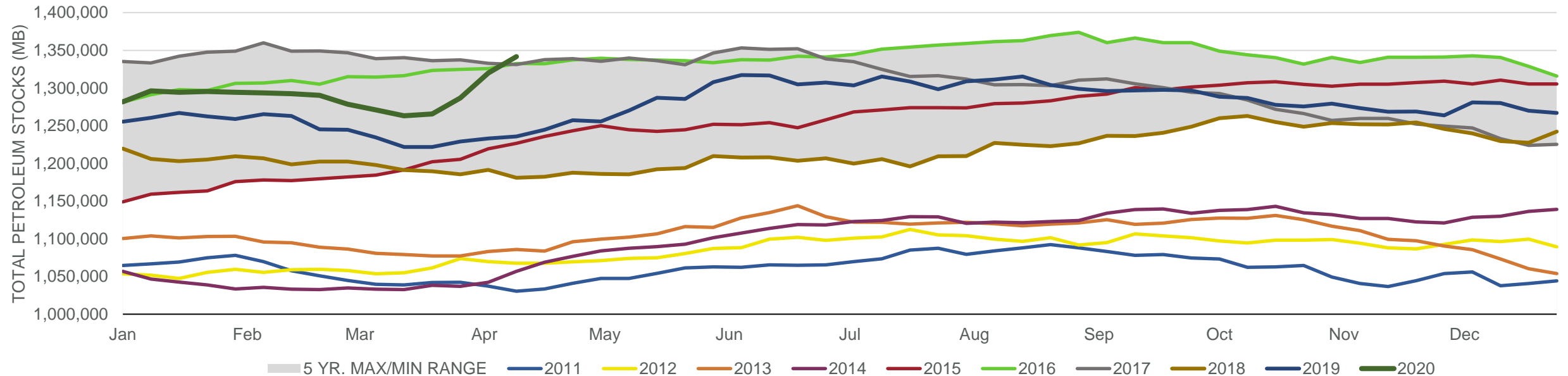
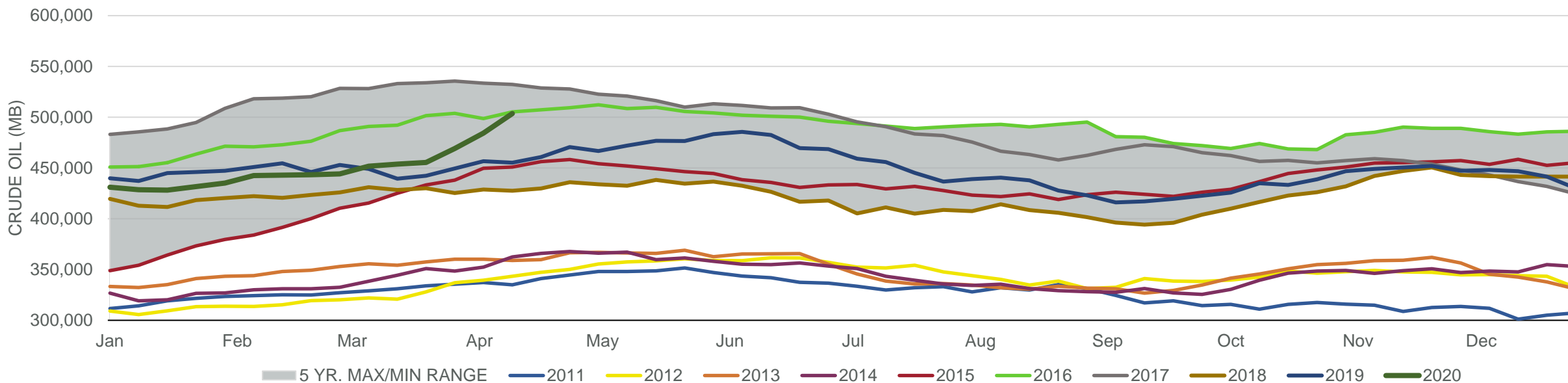


Total Petroleum Stocks



Week Ending	WTI	Change	GC Gaso	Change	NY No 2	Change	Crude	Change	Gasoline	Change	Distillate	Change	Kero	Change	Resid	Change	Total Stocks	Change
3/13/2020	\$34.27	(\$12.04)	\$1.08	(\$0.36)	\$1.22	(\$0.28)	453,737	1,954	240,819	(6,180)	125,120	(2,940)	40,667	(1,747)	32,725	1,255	1,263,330	(7,680)
3/20/2020	\$26.64	(\$7.63)	\$0.71	(\$0.37)	\$1.03	(\$0.19)	455,360	1,623	239,282	(1,537)	124,442	(678)	39,588	(1,079)	34,387	1,662	1,265,780	2,450
3/27/2020	\$20.24	(\$6.40)	\$0.44	(\$0.27)	\$1.03	\$0.00	469,193	13,833	246,806	7,524	122,248	(2,194)	38,268	(1,320)	34,405	18	1,286,820	21,040
4/3/2020	\$19.11	(\$1.13)	\$0.45	\$0.01	\$0.98	(\$0.05)	484,370	15,177	257,303	10,497	122,724	476	38,861	593	35,980	1,575	1,319,800	32,980
4/10/2020	\$25.20	\$6.09	\$0.56	\$0.11	\$1.02	\$0.03	503,618	19,248	262,217	4,914	129,004	6,280	40,239	1,378	34,586	(1,394)	1,341,570	21,770

Commercial Crude Oil Stocks



Week Ending	WTI	Change	Production	Change	Imports	Change	Exports	Change	Capacity	Inputs	Change	Utilization	Crude Oil Stocks	Change
3/13/2020	\$34.27	(\$12.04)	13,100	100	6,539	127	4378	968	18,125	15,820	118	86.4%	453,737	1,954
3/20/2020	\$26.64	(\$7.63)	13,000	(100)	6,117	(422)	3850	(528)	18,125	15,838	18	87.3%	455,360	1,623
3/27/2020	\$20.24	(\$6.40)	13,000	0	6,047	(70)	3155	(695)	18,125	14,898	(940)	82.3%	469,193	13,833
4/3/2020	\$19.11	(\$1.13)	12,400	(600)	5,874	(173)	2833	(322)	18,125	13,634	(1,264)	75.6%	484,370	15,177
4/10/2020	\$25.20	\$6.09	12,300	(100)	5,680	(194)	3436	603	18,125	12,665	(969)	69.1%	503,618	19,248