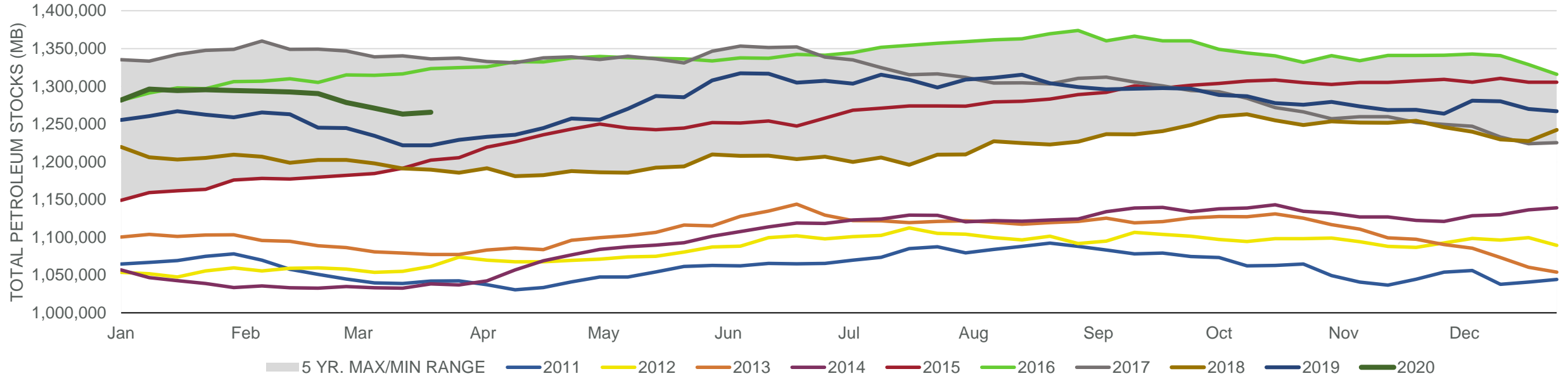
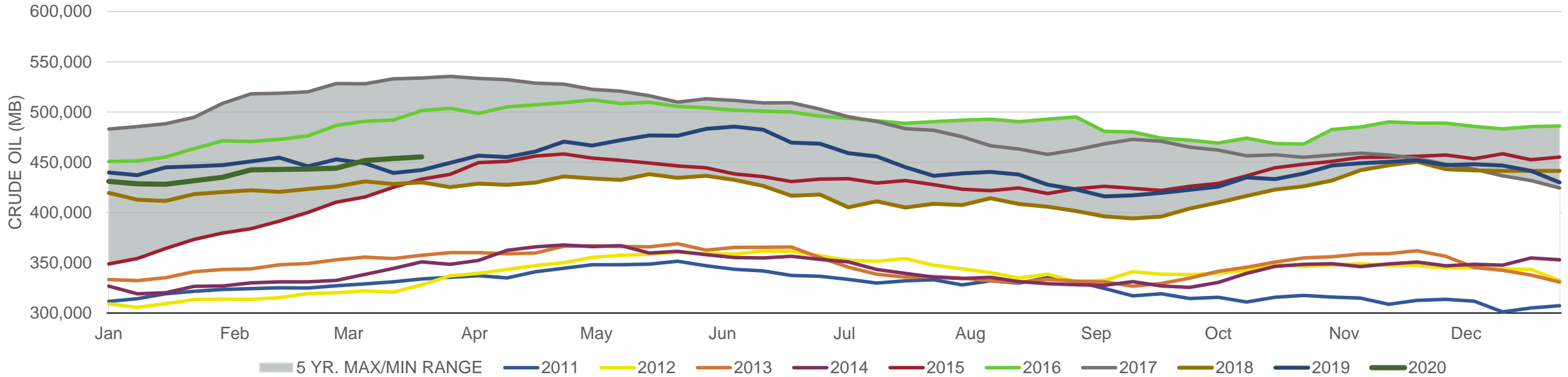


Total Petroleum Stocks



Week Ending	WTI	Change	GC Gaso	Change	NY No 2	Change	Crude	Change	Gasoline	Change	Distillate	Change	Kero	Change	Resid	Change	Total Stocks	Change
2/21/2020	\$52.80	\$2.31	\$1.50	\$0.06	\$1.66	\$0.04	443,335	452	256,387	(2,691)	138,472	(2,115)	43,329	(309)	30,508	82	1,290,449	(2,055)
2/28/2020	\$50.07	(\$2.73)	\$1.48	(\$0.02)	\$1.53	(\$0.13)	444,119	784	252,048	(4,339)	134,464	(4,008)	41,970	(1,359)	30,584	76	1,278,587	(11,862)
3/6/2020	\$46.31	(\$3.76)	\$1.38	(\$0.10)	\$1.50	(\$0.04)	451,783	7,664	246,999	(5,049)	128,060	(6,404)	42,414	444	31,470	886	1,271,010	(7,577)
3/13/2020	\$34.27	(\$12.04)	\$1.44	\$0.06	\$1.22	(\$0.28)	453,737	1,954	240,819	(6,180)	125,120	(2,940)	40,667	(1,747)	32,725	1,255	1,263,330	(7,680)
3/20/2020	\$26.64	(\$7.63)	\$1.08	(\$0.36)	\$1.03	(\$0.19)	455,360	1,623	239,282	(1,537)	124,442	(678)	39,588	(1,079)	34,387	1,662	1,265,780	2,450

Commercial Crude Oil Stocks



Week Ending	WTI	Change	Production	Change	Imports	Change	Exports	Change	Capacity	Inputs	Change	Utilization	Crude Oil Stocks	Change
2/21/2020	\$52.80	\$2.31	13,000	0	6,217	(330)	3657	93	18,125	16,008	(202)	87.9%	443,335	452
2/28/2020	\$50.07	(\$2.73)	13,100	100	6,238	21	4154	497	18,125	15,696	(312)	86.9%	444,119	784
3/6/2020	\$46.31	(\$3.76)	13,000	(100)	6,412	174	3410	(744)	18,125	15,702	6	86.4%	451,783	7,664
3/13/2020	\$34.27	(\$12.04)	13,100	100	6,539	127	4378	968	18,125	15,820	118	86.4%	453,737	1,954
3/20/2020	\$26.64	(\$7.63)	13,000	(100)	6,117	(422)	3850	(528)	18,125	15,838	18	87.3%	455,360	1,623