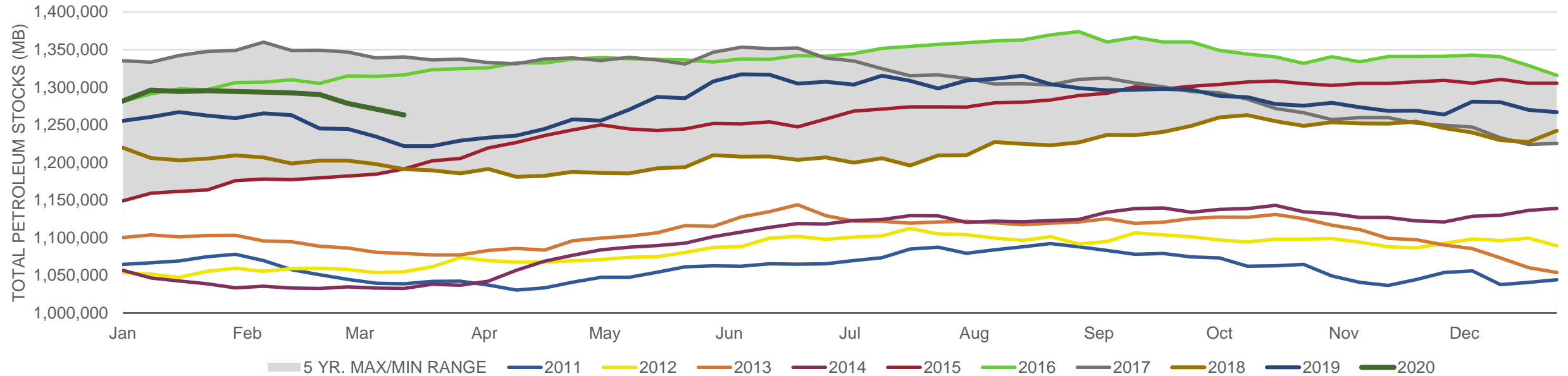
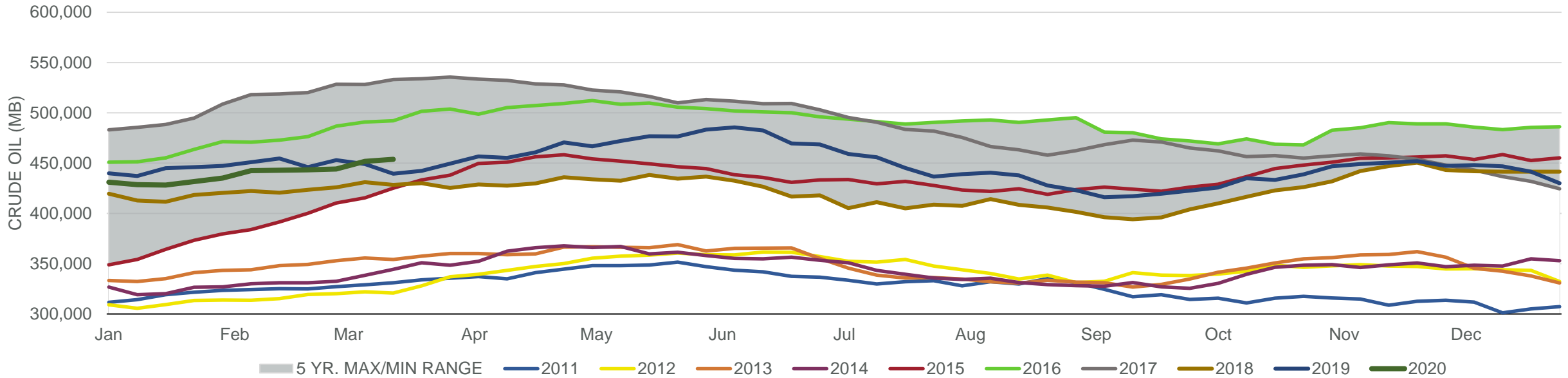


#### Total Petroleum Stocks



Week Ending	WTI	Change	GC Gaso	Change	NY No 2	Change	Crude	Change	Gasoline	Change	Distillate	Change	Kero	Change	Resid	Change	Total Stocks	Change
2/14/2020	\$50.49	(\$0.11)	\$1.48	\$0.03	\$1.61	\$0.02	442,883	415	259,078	(1,971)	140,587	(635)	43,638	699	30,426	30	1,292,504	(989)
2/21/2020	\$52.80	\$2.31	\$1.49	\$0.01	\$1.66	\$0.04	443,335	452	256,387	(2,691)	138,472	(2,115)	43,329	(309)	30,508	82	1,290,449	(2,055)
2/28/2020	\$50.07	(\$2.73)	\$1.43	(\$0.06)	\$1.53	(\$0.13)	444,119	784	252,048	(4,339)	134,464	(4,008)	41,970	(1,359)	30,584	76	1,278,587	(11,862)
3/6/2020	\$46.31	(\$3.76)	\$1.41	(\$0.01)	\$1.50	(\$0.04)	451,783	7,664	246,999	(5,049)	128,060	(6,404)	42,414	444	31,470	886	1,271,010	(7,577)
3/13/2020	\$34.27	(\$12.04)	\$1.20	(\$0.21)	\$1.22	(\$0.28)	453,737	1,954	240,819	(6,180)	125,120	(2,940)	40,667	(1,747)	32,725	1,255	1,263,330	(7,680)

#### Commercial Crude Oil Stocks



Week Ending	WTI	Change	Production	Change	Imports	Change	Exports	Change	Capacity	Inputs	Change	Utilization	Crude Oil Stocks	Change
2/14/2020	\$50.49	(\$0.11)	13,000	0	6,547	(431)	3564	594	18,125	16,210	190	89.4%	442,883	415
2/21/2020	\$52.80	\$2.31	13,000	0	6,217	(330)	3657	93	18,125	16,008	(202)	87.9%	443,335	452
2/28/2020	\$50.07	(\$2.73)	13,100	100	6,238	21	4154	497	18,125	15,696	(312)	86.9%	444,119	784
3/6/2020	\$46.31	(\$3.76)	13,000	(100)	6,412	174	3410	(744)	18,125	15,702	6	86.4%	451,783	7,664
3/13/2020	\$34.27	(\$12.04)	13,100	100	6,539	127	4378	968	18,125	15,820	118	86.4%	453,737	1,954