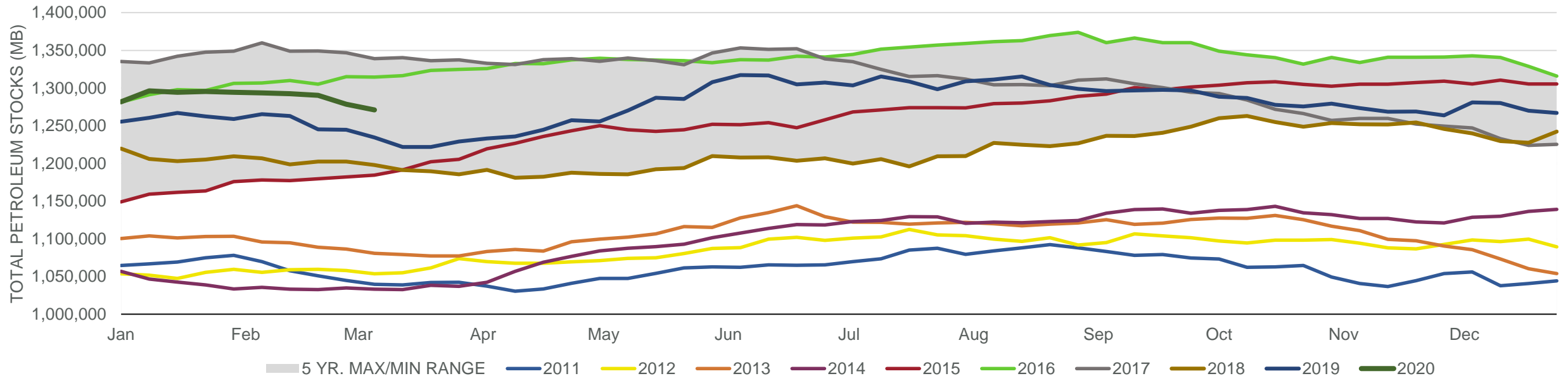
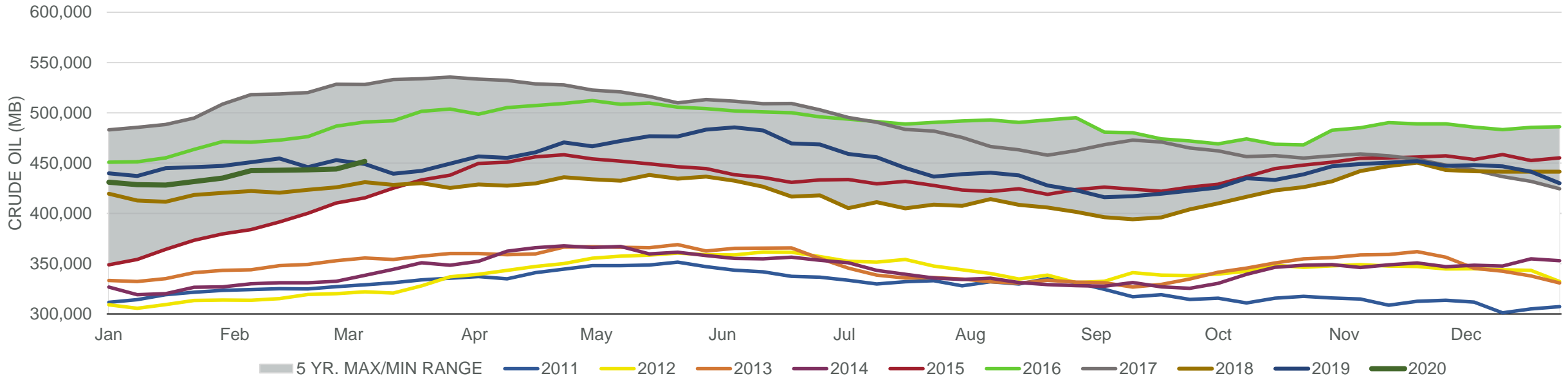


Total Petroleum Stocks



Week Ending	WTI	Change	GC Gaso	Change	NY No 2	Change	Crude	Change	Gasoline	Change	Distillate	Change	Kero	Change	Resid	Change	Total Stocks	Change
2/7/2020	\$50.61	(\$2.59)	\$1.45	(\$0.03)	\$1.59	(\$0.10)	442,468	7,459	261,049	(95)	141,222	(2,013)	42,939	328	30,396	(497)	1,293,493	(1,014)
2/14/2020	\$50.49	(\$0.11)	\$1.48	\$0.03	\$1.61	\$0.02	442,883	415	259,078	(1,971)	140,587	(635)	43,638	699	30,426	30	1,292,504	(989)
2/21/2020	\$52.80	\$2.31	\$1.49	\$0.01	\$1.66	\$0.04	443,335	452	256,387	(2,691)	138,472	(2,115)	43,329	(309)	30,508	82	1,290,449	(2,055)
2/28/2020	\$50.07	(\$2.73)	\$1.47	(\$0.02)	\$1.53	(\$0.13)	444,119	784	252,048	(4,339)	134,464	(4,008)	41,970	(1,359)	30,584	76	1,278,587	(11,862)
3/6/2020	\$46.31	(\$3.76)	\$1.41	(\$0.06)	\$1.50	(\$0.04)	451,783	7,664	246,999	(5,049)	128,060	(6,404)	42,414	444	31,470	886	1,271,010	(7,577)

Commercial Crude Oil Stocks



Week Ending	WTI	Change	Production	Change	Imports	Change	Exports	Change	Capacity	Inputs	Change	Utilization	Crude Oil Stocks	Change
2/7/2020	\$50.61	(\$2.59)	13,000	100	6,978	363	2970	(443)	18,125	16,020	48	88.0%	442,468	7,459
2/14/2020	\$50.49	(\$0.11)	13,000	0	6,547	(431)	3564	594	18,125	16,210	190	89.4%	442,883	415
2/21/2020	\$52.80	\$2.31	13,000	0	6,217	(330)	3657	93	18,125	16,008	(202)	87.9%	443,335	452
2/28/2020	\$50.07	(\$2.73)	13,100	100	6,238	21	4154	497	18,125	15,696	(312)	86.9%	444,119	784
3/6/2020	\$46.31	(\$3.76)	13,000	(100)	6,412	174	3410	(744)	18,125	15,702	6	86.4%	451,783	7,664