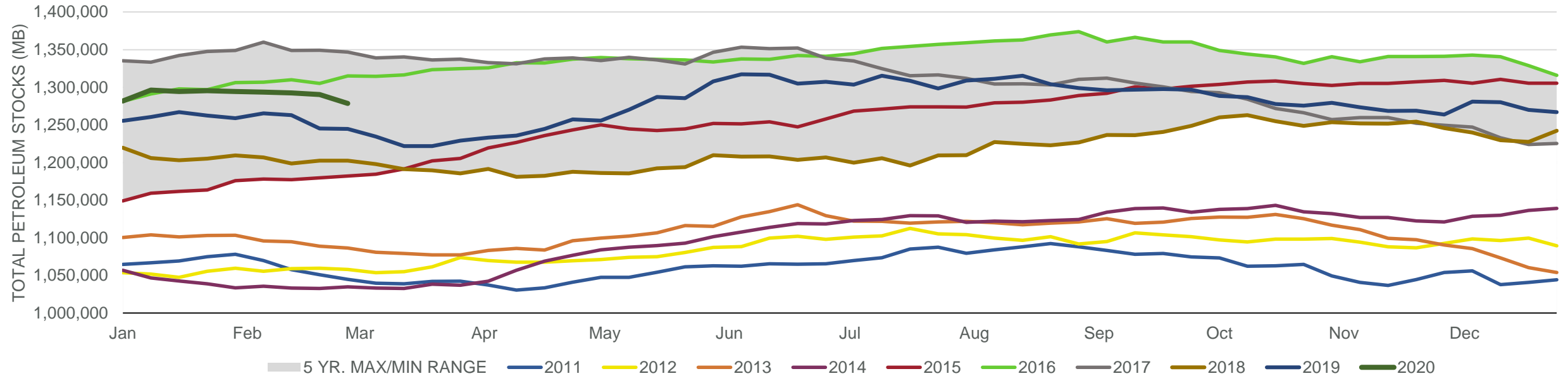
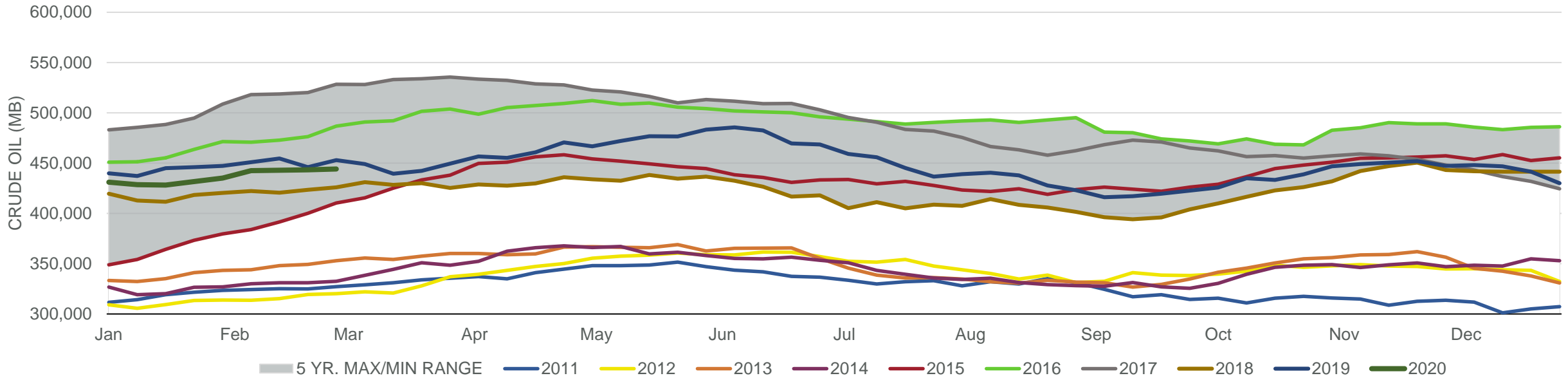


#### Total Petroleum Stocks



Week Ending	WTI	Change	GC Gaso	Change	NY No 2	Change	Crude	Change	Gaso	Change	Distillate	Change	Kero	Change	Resid	Change	Total Stocks	Change
1/31/2020	\$55.54	(\$2.78)	\$1.52	(\$0.10)	\$1.73	(\$0.13)	435,009	3,355	261,144	(91)	143,235	(1,512)	42,611	(178)	30,893	(687)	1,294,507	(891)
2/7/2020	\$52.09	(\$3.45)	\$1.47	(\$0.05)	\$1.62	(\$0.11)	442,468	7,459	261,049	(95)	141,222	(2,013)	42,939	328	30,396	(497)	1,293,493	(1,014)
2/14/2020	\$50.27	(\$1.82)	\$1.45	(\$0.02)	\$1.60	(\$0.02)	442,883	415	259,078	(1,971)	140,587	(635)	43,638	699	30,426	30	1,292,504	(989)
2/21/2020	\$51.14	\$0.88	\$1.49	\$0.04	\$1.64	\$0.04	443,335	452	256,387	(2,691)	138,472	(2,115)	43,329	(309)	30,508	82	1,290,449	(2,055)
2/28/2020	\$52.78	\$1.64	\$1.50	\$0.02	\$1.64	(\$0.00)	444,119	784	252,048	(4,339)	134,464	(4,008)	41,970	(1,359)	30,584	76	1,278,587	(11,862)

#### Commercial Crude Oil Stocks



Week Ending	WTI	Change	Production	Change	Imports	Change	Exports	Change	Capacity	Inputs	Change	Utilization	Crude Oil Stocks	Change
1/31/2020	\$55.54	(\$2.78)	12,900	(100)	6,615	(45)	3413	(96)	18,125	15,972	48	87.4%	435,009	3,355
2/7/2020	\$52.09	(\$3.45)	13,000	100	6,978	363	2970	(443)	18,125	16,020	48	88.0%	442,468	7,459
2/14/2020	\$50.27	(\$1.82)	13,000	0	6,547	(431)	3564	594	18,125	16,210	190	89.4%	442,883	415
2/21/2020	\$51.14	\$0.88	13,000	0	6,217	(330)	3657	93	18,125	16,008	(202)	87.9%	443,335	452
2/28/2020	\$52.78	\$1.64	13,100	100	6,238	21	4154	497	18,125	15,696	(312)	86.9%	444,119	784