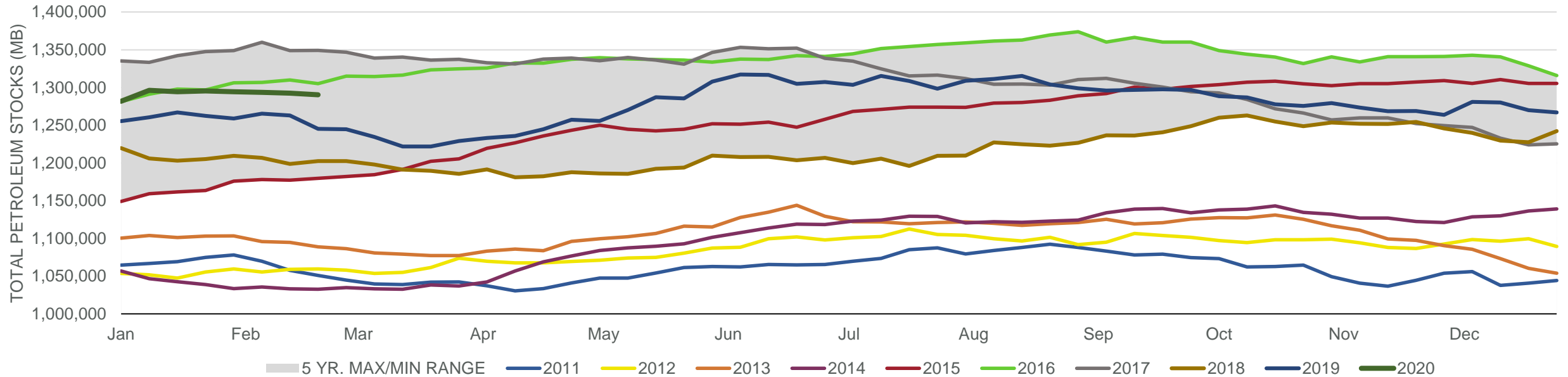


### EIA Weekly Petroleum Status Report

Week Ending: 2/21/2020

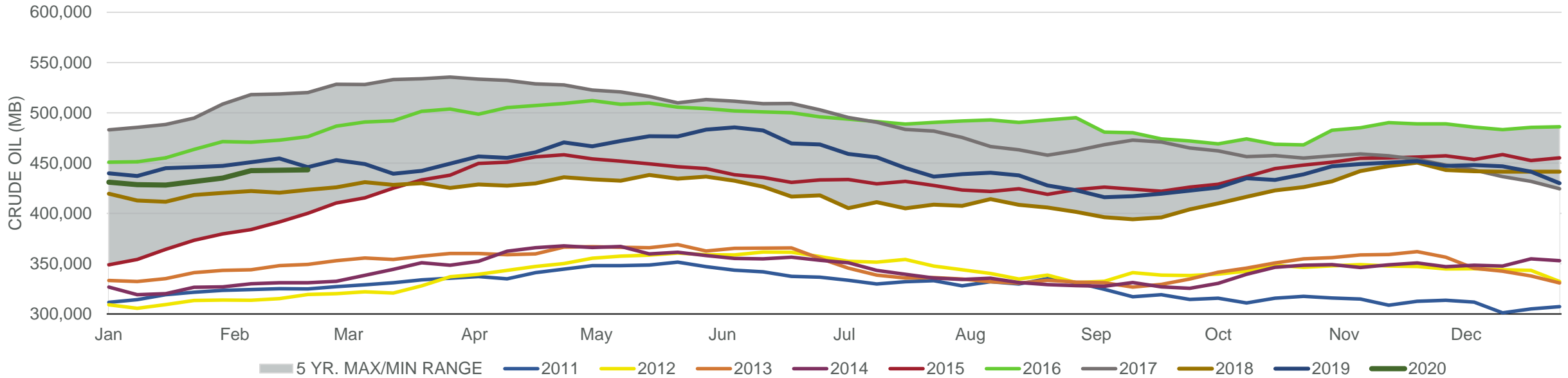
Total Stocks: **-2,055 Mb** Crude Oil Stocks (excl. SPR): **452 Mb** Production: **0 Mbd**

#### Total Petroleum Stocks



Week Ending	WTI	Change	GC Gaso	Change	NY No 2	Change	Crude	Change	Gasoline	Change	Distillate	Change	Kero	Change	Resid	Change	Total Stocks	Change
1/24/2020	\$56.15	(\$2.14)	\$1.58	(\$0.04)	\$1.80	(\$0.10)	431,654	3,548	261,235	1,203	144,747	(1,289)	42,789	389	31,580	711	1,295,398	1,000
1/31/2020	\$52.70	(\$3.46)	\$1.48	(\$0.10)	\$1.67	(\$0.13)	435,009	3,355	261,144	(91)	143,235	(1,512)	42,611	(178)	30,893	(687)	1,294,507	(891)
2/7/2020	\$50.36	(\$2.34)	\$1.44	(\$0.03)	\$1.59	(\$0.08)	442,468	7,459	261,049	(95)	141,222	(2,013)	42,939	328	30,396	(497)	1,293,493	(1,014)
2/14/2020	\$50.83	\$0.47	\$1.48	\$0.04	\$1.62	\$0.03	442,883	415	259,078	(1,971)	140,587	(635)	43,638	699	30,426	30	1,292,504	(989)
2/21/2020	\$53.14	\$2.30	\$1.49	\$0.01	\$1.66	\$0.04	443,335	452	256,387	(2,691)	138,472	(2,115)	43,329	(309)	30,508	82	1,290,449	(2,055)

#### Commercial Crude Oil Stocks



Week Ending	WTI	Change	Production	Change	Imports	Change	Exports	Change	Capacity	Inputs	Change	Utilization	Crude Oil Stocks	Change
1/24/2020	\$56.15	(\$2.14)	13,000	0	6,660	228	3509	95	18,125	15,924	(933)	87.2%	431,654	3,548
1/31/2020	\$52.70	(\$3.46)	12,900	(100)	6,615	(45)	3413	(96)	18,125	15,972	48	87.4%	435,009	3,355
2/7/2020	\$50.36	(\$2.34)	13,000	100	6,978	363	2970	(443)	18,125	16,020	48	88.0%	442,468	7,459
2/14/2020	\$50.83	\$0.47	13,000	0	6,547	(431)	3564	594	18,125	16,210	190	89.4%	442,883	415
2/21/2020	\$53.14	\$2.30	13,000	0	6,217	(330)	3657	93	18,125	16,008	(202)	87.9%	443,335	452