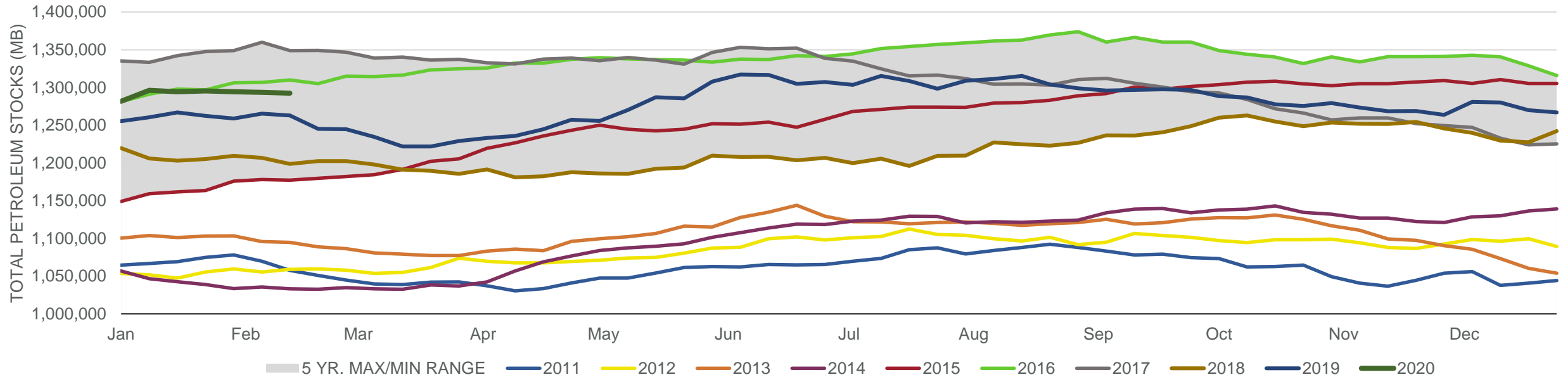
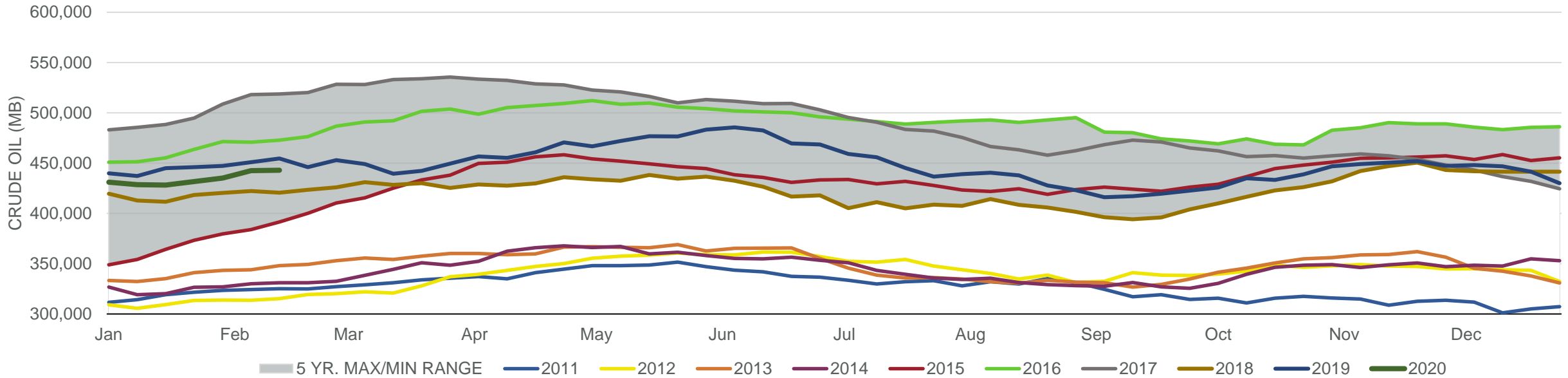


#### Total Petroleum Stocks



Week Ending	WTI	Change	GC Gaso	Change	NY No 2	Change	Crude	Change	Gaso	Change	Distillate	Change	Kero	Change	Resid	Change	Total Stocks	Change
1/17/2020	\$58.32	(\$1.50)	\$1.62	(\$0.04)	\$1.86	(\$0.10)	428,106	(405)	260,032	1,745	146,036	(1,185)	42,400	1,953	30,869	1,773	1,294,398	(1,900)
1/24/2020	\$55.54	(\$2.78)	\$1.52	(\$0.10)	\$1.73	(\$0.13)	431,654	3,548	261,235	1,203	144,747	(1,289)	42,789	389	31,580	711	1,295,398	1,000
1/31/2020	\$52.09	(\$3.45)	\$1.47	(\$0.05)	\$1.62	(\$0.11)	435,009	3,355	261,144	(91)	143,235	(1,512)	42,611	(178)	30,893	(687)	1,294,507	(891)
2/7/2020	\$50.27	(\$1.82)	\$1.44	(\$0.03)	\$1.60	(\$0.02)	442,468	7,459	261,049	(95)	141,222	(2,013)	42,939	328	30,396	(497)	1,293,493	(1,014)
2/14/2020	\$51.32	\$1.05	\$1.49	\$0.05	\$1.65	\$0.04	442,883	415	259,078	(1,971)	140,587	(635)	43,638	699	30,426	30	1,292,504	(989)

#### Commercial Crude Oil Stocks



Week Ending	WTI	Change	Production	Change	Imports	Change	Exports	Change	Capacity	Inputs	Change	Utilization	Crude Oil Stocks	Change
1/17/2020	\$58.32	(\$1.50)	13,000	0	6,432	(120)	3414	(67)	18,125	16,857	(116)	90.5%	428,106	(405)
1/24/2020	\$55.54	(\$2.78)	13,000	0	6,660	228	3509	95	18,125	15,924	(933)	87.2%	431,654	3,548
1/31/2020	\$52.09	(\$3.45)	12,900	(100)	6,615	(45)	3413	(96)	18,125	15,972	48	87.4%	435,009	3,355
2/7/2020	\$50.27	(\$1.82)	13,000	100	6,978	363	2970	(443)	18,125	16,020	48	88.0%	442,468	7,459
2/14/2020	\$51.32	\$1.05	13,000	0	6,547	(431)	3564	594	18,125	16,210	190	89.4%	442,883	415