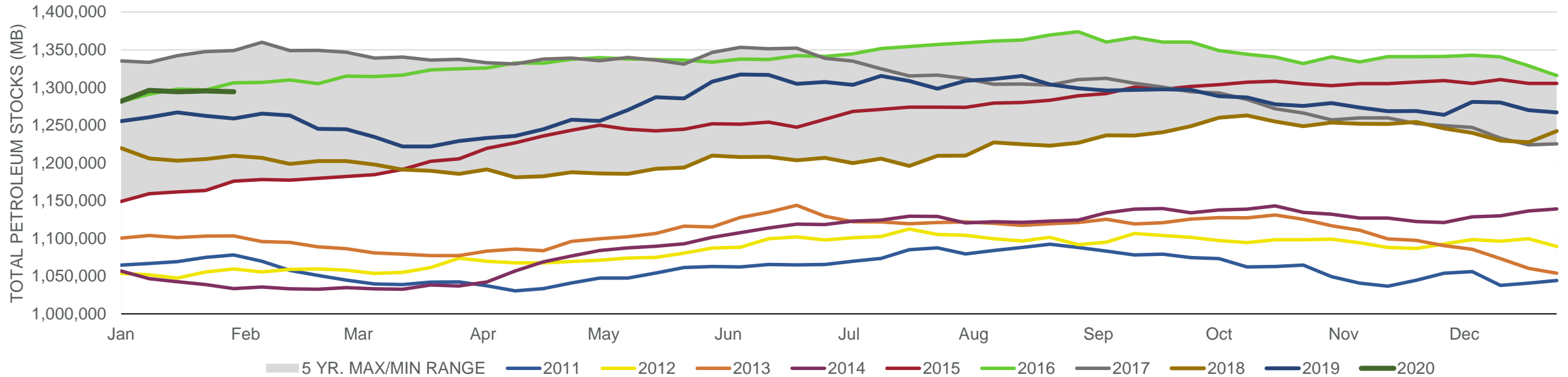


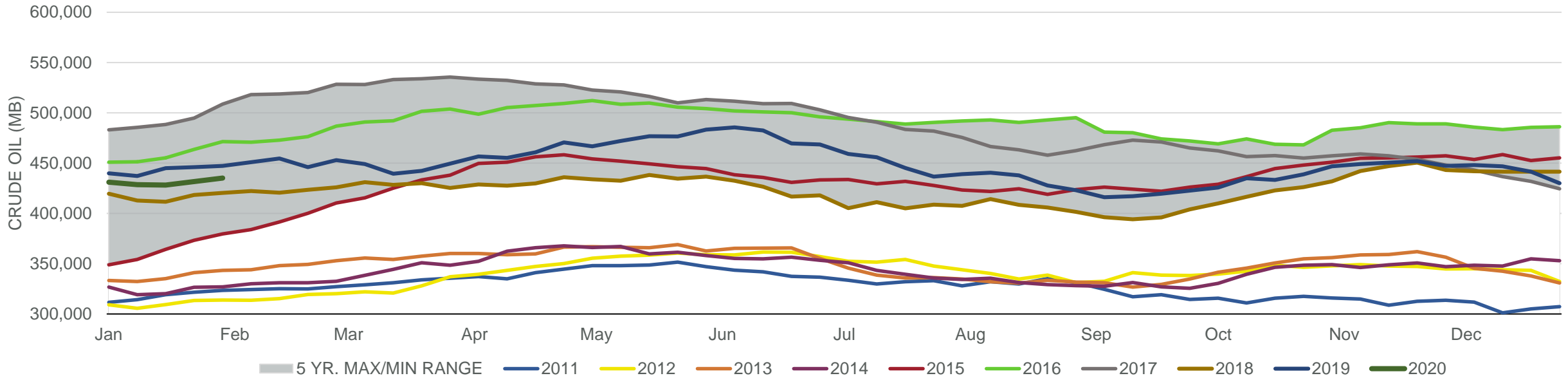
Total Stocks: **-891 Mb** Crude Oil Stocks (excl. SPR): **3,555 Mb** Production: **-100 Mbd**

#### Total Petroleum Stocks



Week Ending	WTI	Change	GC Gaso	Change	NY No 2	Change	Crude	Change	Gaso	Change	Distillate	Change	Kero	Change	Resid	Change	Total Stocks	Change
1/3/2020	\$61.75	\$0.72	\$1.71	\$0.04	\$2.02	\$0.01	431,060	1,164	251,609	9,137	139,050	5,330	39,987	618	28,329	(1,702)	1,281,837	14,768
1/10/2020	\$60.84	(\$0.91)	\$1.68	(\$0.03)	\$1.99	(\$0.03)	428,511	(2,549)	258,287	6,678	147,221	8,171	40,447	460	29,096	767	1,296,298	14,461
1/17/2020	\$58.29	(\$2.55)	\$1.62	(\$0.06)	\$1.88	(\$0.11)	428,106	(405)	260,032	1,745	146,036	(1,185)	42,400	1,953	30,869	1,773	1,294,398	(1,900)
1/24/2020	\$56.15	(\$2.14)	\$1.58	(\$0.04)	\$1.77	(\$0.10)	431,654	3,548	261,235	1,203	144,747	(1,289)	42,789	389	31,580	711	1,295,398	1,000
1/31/2020	\$52.70	(\$3.46)	\$1.48	(\$0.10)	\$1.65	(\$0.13)	435,009	3,355	261,144	(91)	143,235	(1,512)	42,611	(178)	30,893	(687)	1,294,507	(891)

#### Commercial Crude Oil Stocks



Week Ending	WTI	Change	Production	Change	Imports	Change	Exports	Change	Capacity	Inputs	Change	Utilization	Crude Oil Stocks	Change
1/3/2020	\$61.75	\$0.72	12,900	0	6,730	378	3064	(1,398)	18,125	16,897	(386)	93.0%	431,060	1,164
1/10/2020	\$60.84	(\$0.91)	13,000	100	6,552	(178)	3481	417	18,125	16,973	76	92.2%	428,511	(2,549)
1/17/2020	\$58.29	(\$2.55)	13,000	0	6,432	(120)	3414	(67)	18,125	16,857	(116)	90.5%	428,106	(405)
1/24/2020	\$56.15	(\$2.14)	13,000	0	6,660	228	3509	95	18,125	15,924	(933)	87.2%	431,654	3,548
1/31/2020	\$52.70	(\$3.46)	12,900	(100)	6,615	(45)	3413	(96)	18,125	15,972	48	87.4%	435,009	3,355