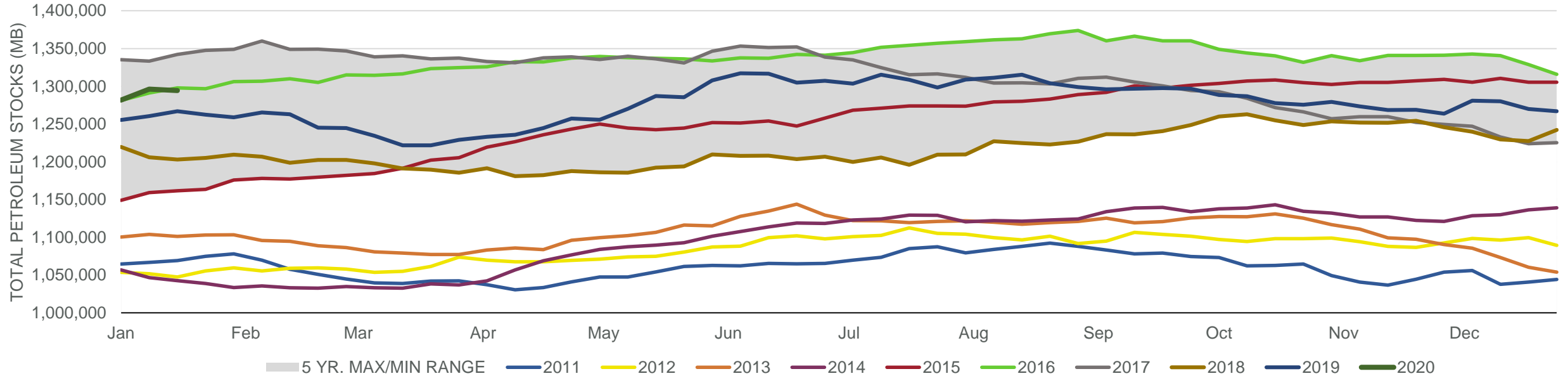
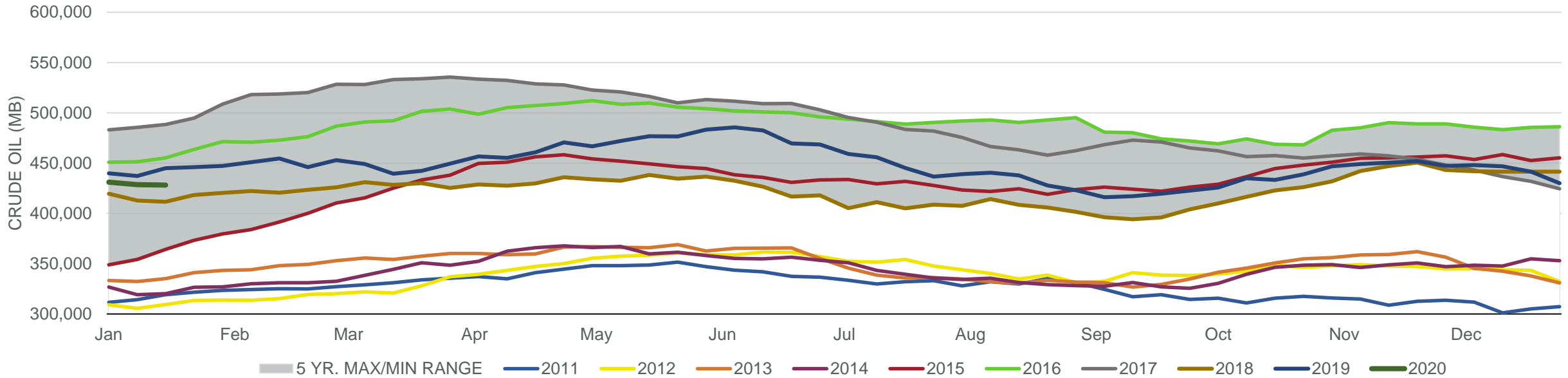


#### Total Petroleum Stocks



Week Ending	WTI	Change	GC Gaso	Change	NY No 2	Change	Crude	Change	Gasoline	Change	Distillate	Change	Kero	Change	Resid	Change	Total Stocks	Change
12/20/2019	\$60.69	\$1.62	\$1.59	(\$0.00)	\$1.98	\$0.05	441,359	(5,474)	239,260	1,963	124,944	(152)	39,398	1,083	31,895	(166)	1,269,956	(10,174)
12/27/2019	\$61.12	\$0.43	\$1.69	\$0.09	\$2.01	\$0.03	429,896	(11,463)	242,472	3,212	133,720	8,776	39,369	(29)	30,031	(1,864)	1,267,069	(2,887)
1/3/2020	\$62.05	\$0.93	\$1.71	\$0.02	\$2.02	\$0.01	431,060	1,164	251,609	9,137	139,050	5,330	39,987	618	28,329	(1,702)	1,281,837	14,768
1/10/2020	\$59.82	(\$2.23)	\$1.68	(\$0.03)	\$1.96	(\$0.05)	428,511	(2,549)	258,287	6,678	147,221	8,171	40,447	460	29,096	767	1,296,298	14,461
1/17/2020	\$58.32	(\$1.50)	\$1.62	(\$0.06)	\$1.86	(\$0.10)	428,106	(405)	260,032	1,745	146,036	(1,185)	42,400	1,953	30,869	1,773	1,294,398	(1,900)

#### Commercial Crude Oil Stocks



Week Ending	WTI	Change	Production	Change	Imports	Change	Exports	Change	Capacity	Inputs	Change	Utilization	Crude Oil Stocks	Change
12/20/2019	\$60.69	\$1.62	12,900	100	6,809	230	3397	(236)	18,125	16,980	418	93.3%	441,359	(5,474)
12/27/2019	\$61.12	\$0.43	12,900	0	6,352	(457)	4462	1,065	18,125	17,283	303	94.5%	429,896	(11,463)
1/3/2020	\$62.05	\$0.93	12,900	0	6,730	378	3064	(1,398)	18,125	16,897	(386)	93.0%	431,060	1,164
1/10/2020	\$59.82	(\$2.23)	13,000	100	6,552	(178)	3481	417	18,125	16,973	76	92.2%	428,511	(2,549)
1/17/2020	\$58.32	(\$1.50)	13,000	0	6,432	(120)	3414	(67)	18,125	16,857	(116)	90.5%	428,106	(405)