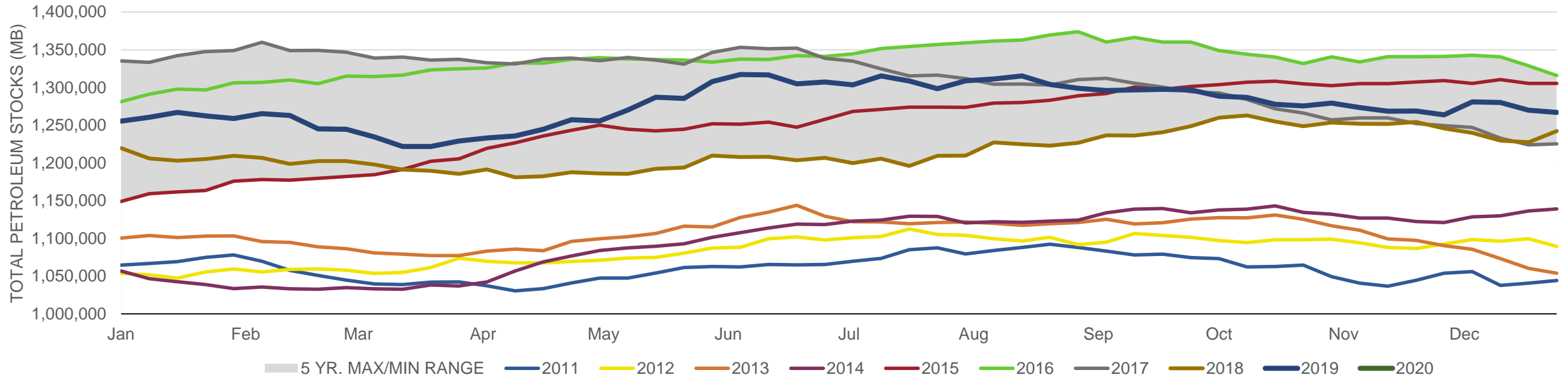
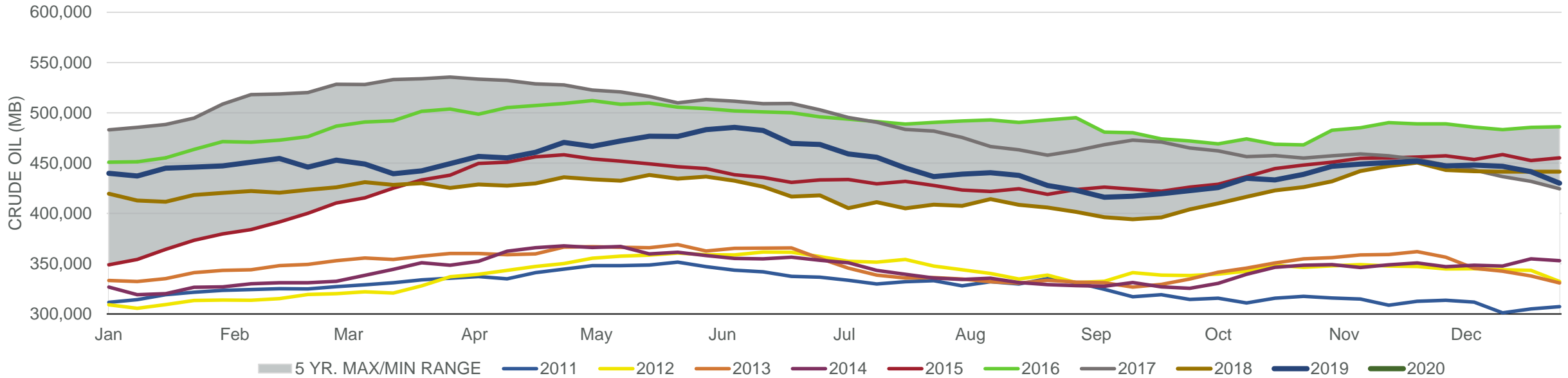


Total Petroleum Stocks



Week Ending	WTI	Change	GC Gaso	Change	NY No 2	Change	Crude	Change	Gaso	Change	Distillate	Change	Kero	Change	Resid	Change	Total Stocks	Change
12/6/2019	\$56.86	(\$1.18)	\$1.60	(\$0.05)	\$1.90	\$0.00	447,918	822	234,768	5,405	123,587	4,118	39,337	1,012	31,456	1,942	1,281,054	17,224
12/13/2019	\$58.91	\$2.05	\$1.60	\$0.00	\$1.92	\$0.02	446,833	(1,085)	237,297	2,529	125,096	1,509	38,315	(1,022)	32,061	605	1,280,130	(924)
12/20/2019	\$60.26	\$1.35	\$1.59	(\$0.00)	\$1.98	\$0.05	441,359	(5,474)	239,260	1,963	124,944	(152)	39,398	1,083	31,895	(166)	1,269,956	(10,174)
12/27/2019	\$61.03	\$0.76	\$1.67	\$0.07	\$2.01	\$0.03	429,896	(11,463)	242,472	3,212	133,720	8,776	39,369	(29)	30,031	(1,864)	1,267,069	(2,887)
1/3/2020	\$61.75	\$0.72	\$1.71	\$0.04	\$2.02	\$0.01	431,060	1,164	251,609	9,137	139,050	5,330	39,987	618	28,329	(1,702)	1,281,837	14,768

Commercial Crude Oil Stocks



Week Ending	WTI	Change	Production	Change	Imports	Change	Exports	Change	Capacity	Inputs	Change	Utilization	Crude Oil Stocks	Change
12/6/2019	\$56.86	(\$1.18)	12,800	(100)	6,887	898	3400	265	18,125	16,597	(201)	90.6%	447,918	822
12/13/2019	\$58.91	\$2.05	12,800	0	6,579	(308)	3633	233	18,125	16,562	(35)	90.6%	446,833	(1,085)
12/20/2019	\$60.26	\$1.35	12,900	100	6,809	230	3397	(236)	18,125	16,980	418	93.3%	441,359	(5,474)
12/27/2019	\$61.03	\$0.76	12,900	0	6,352	(457)	4462	1,065	18,125	17,283	303	94.5%	429,896	(11,463)
1/3/2020	\$61.75	\$0.72	12,900	0	6,730	378	3064	(1,398)	18,125	16,897	(386)	93.0%	431,060	1,164