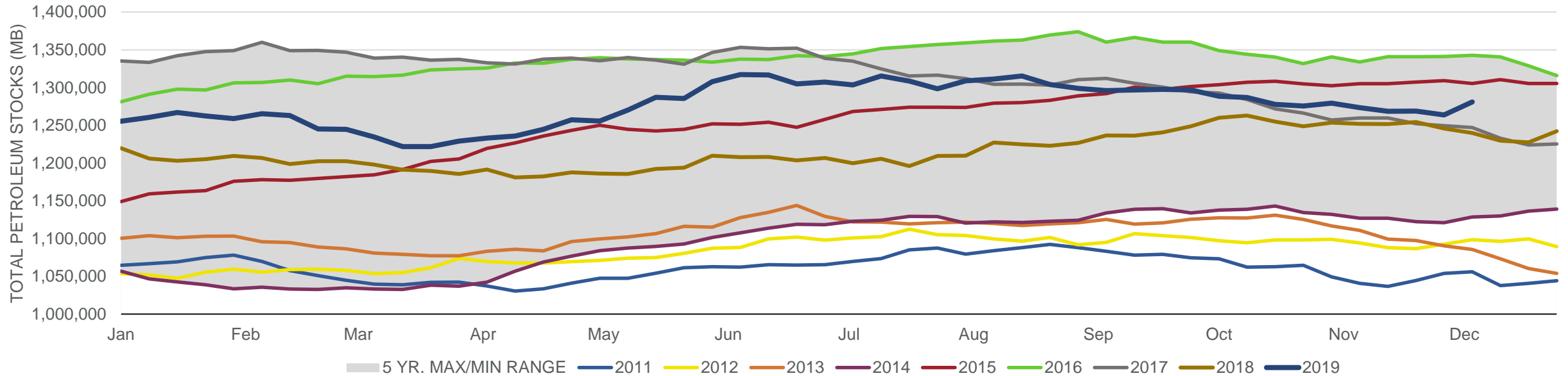
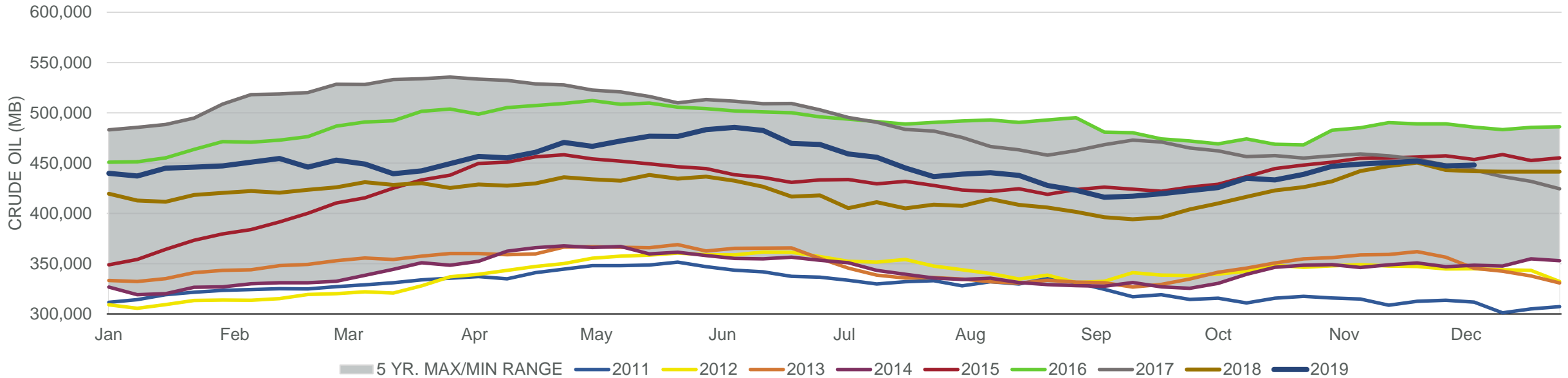


Total Petroleum Stocks



Week Ending	WTI	Change	GC Gaso	Change	NY No 2	Change	Crude	Change	Gasoline	Change	Distillate	Change	Kero	Change	Resid	Change	Total Stocks	Change
11/8/2019	\$56.69	\$1.52	\$1.65	(\$0.03)	\$1.92	(\$0.03)	449,001	2,219	219,090	1,861	116,655	(2,477)	39,014	(379)	29,534	737	1,273,566	(5,860)
11/15/2019	\$56.85	\$0.16	\$1.61	(\$0.04)	\$1.90	(\$0.02)	450,380	1,379	220,846	1,756	115,681	(974)	39,592	578	29,355	(179)	1,268,609	(4,957)
11/22/2019	\$56.90	\$0.05	\$1.61	(\$0.00)	\$1.89	(\$0.01)	451,952	1,572	225,978	5,132	116,406	725	38,487	(1,105)	28,822	(533)	1,268,755	146
11/29/2019	\$58.05	\$1.15	\$1.66	\$0.05	\$1.93	\$0.04	447,096	(4,856)	229,363	3,385	119,469	3,063	38,325	(162)	29,514	692	1,263,830	(4,925)
12/6/2019	\$57.64	(\$0.41)	\$1.57	(\$0.09)	\$1.90	(\$0.04)	447,918	822	234,768	5,405	123,587	4,118	39,337	1,012	31,456	1,942	1,281,054	17,224

Commercial Crude Oil Stocks



Week Ending	WTI	Change	Production	Change	Imports	Change	Exports	Change	Capacity	Inputs	Change	Utilization	Crude Oil Stocks	Change
11/8/2019	\$56.69	\$1.52	12,800	200	5,750	(327)	2633	262	18,125	15,916	155	87.8%	449,001	2,219
11/15/2019	\$56.85	\$0.16	12,800	0	5,972	222	3027	394	18,125	16,435	519	89.5%	450,380	1,379
11/22/2019	\$56.90	\$0.05	12,900	100	6,190	218	3480	453	18,125	16,334	(101)	89.3%	451,952	1,572
11/29/2019	\$58.05	\$1.15	12,900	0	5,989	(201)	3135	(345)	18,125	16,798	464	91.9%	447,096	(4,856)
12/6/2019	\$57.64	(\$0.41)	12,800	(100)	6,887	898	3400	265	18,125	16,597	(201)	90.6%	447,918	822