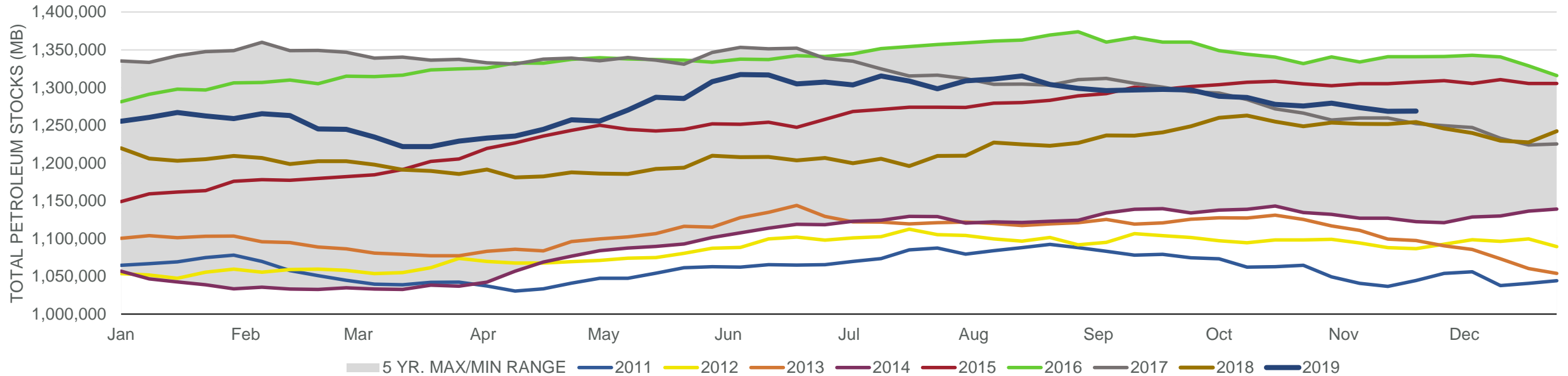
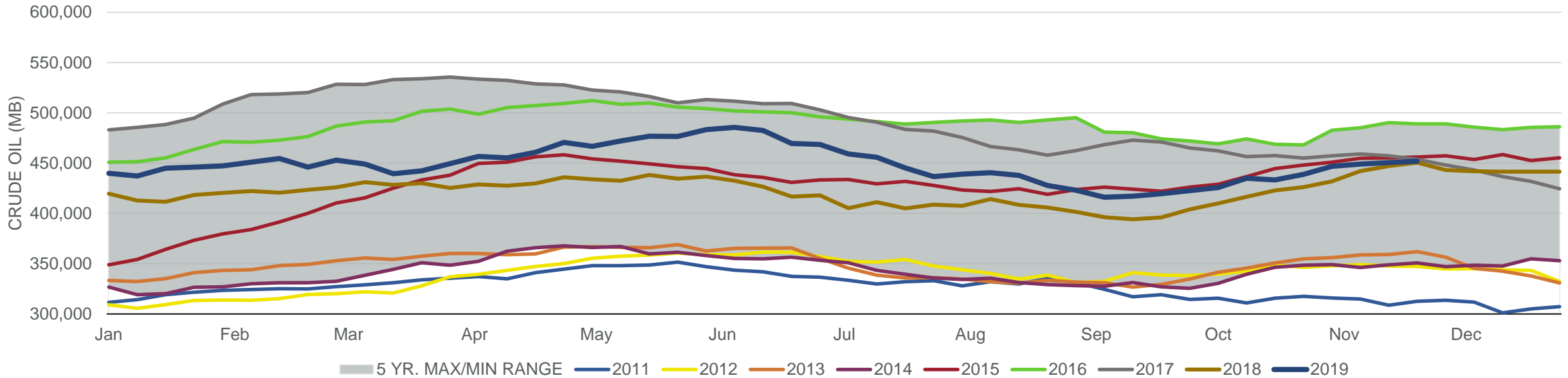


#### Total Petroleum Stocks



Week Ending	WTI	Change	GC Gaso	Change	NY No 2	Change	Crude	Change	Gasoline	Change	Distillate	Change	Kero	Change	Resid	Change	Total Stocks	Change
10/25/2019	\$55.20	\$1.72	\$1.66	\$0.01	\$1.97	\$0.04	438,853	5,702	220,057	(3,037)	119,754	(1,032)	39,662	(805)	28,305	246	1,275,562	(2,225)
11/1/2019	\$55.17	(\$0.03)	\$1.67	\$0.01	\$1.93	(\$0.04)	446,782	7,929	217,229	(2,828)	119,132	(622)	39,393	(269)	28,797	492	1,279,426	3,864
11/8/2019	\$56.69	\$1.52	\$1.64	(\$0.02)	\$1.93	\$0.00	449,001	2,219	219,090	1,861	116,655	(2,477)	39,014	(379)	29,534	737	1,273,566	(5,860)
11/15/2019	\$56.85	\$0.16	\$1.60	(\$0.04)	\$1.91	(\$0.02)	450,380	1,379	220,846	1,756	115,681	(974)	39,592	578	29,355	(179)	1,268,609	(4,957)
11/22/2019	\$56.90	\$0.05	\$1.62	\$0.02	\$1.89	(\$0.02)	451,952	1,572	225,978	5,132	116,406	725	38,487	(1,105)	28,822	(533)	1,268,755	146

#### Commercial Crude Oil Stocks



Week Ending	WTI	Change	Production	Change	Imports	Change	Exports	Change	Capacity	Inputs	Change	Utilization	Crude Oil Stocks	Change
10/25/2019	\$55.20	\$1.72	12,600	0	6,697	840	3327	(356)	18,125	15,998	133	87.7%	438,853	5,702
11/1/2019	\$55.17	(\$0.03)	12,600	0	6,077	(620)	2371	(956)	18,125	15,761	(237)	86.0%	446,782	7,929
11/8/2019	\$56.69	\$1.52	12,800	200	5,750	(327)	2633	262	18,125	15,916	155	87.8%	449,001	2,219
11/15/2019	\$56.85	\$0.16	12,800	0	5,972	222	3027	394	18,125	16,435	519	89.5%	450,380	1,379
11/22/2019	\$56.90	\$0.05	12,900	100	6,190	218	3480	453	18,125	16,334	(101)	89.3%	451,952	1,572