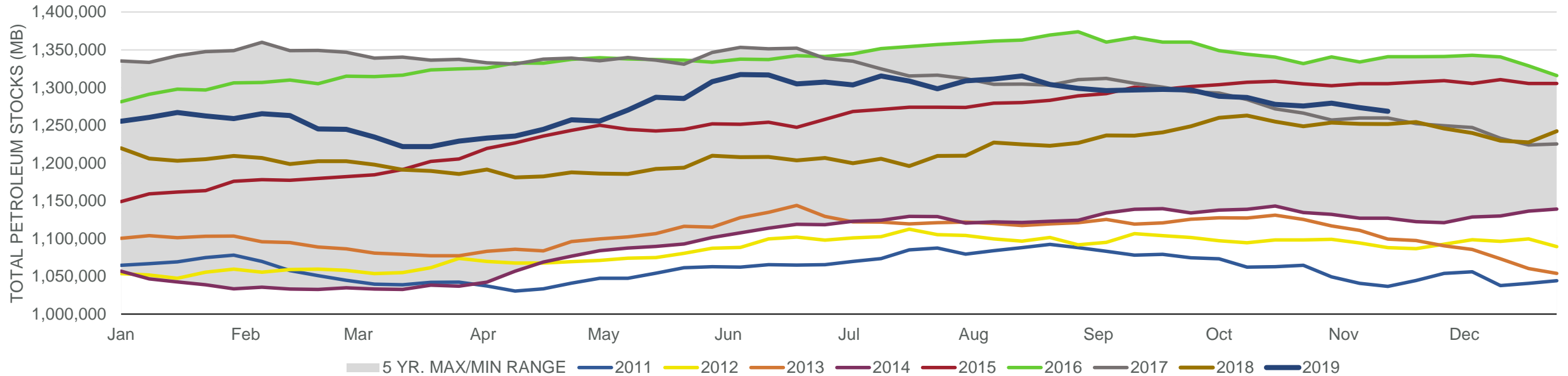
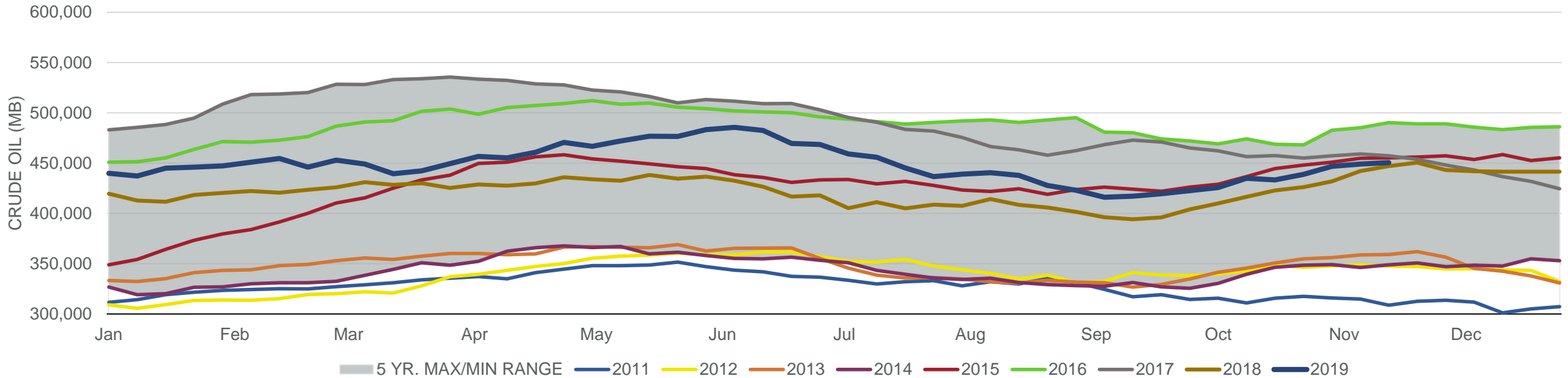


Total Petroleum Stocks



Week Ending	WTI	Change	GC Gaso	Change	NY No 2	Change	Crude	Change	Gasoline	Change	Distillate	Change	Kero	Change	Resid	Change	Total Stocks	Change
10/18/2019	\$53.49	\$0.22	\$1.65	\$0.01	\$1.93	\$0.02	433,151	(1,699)	223,094	(3,107)	120,786	(2,715)	40,467	(2,339)	28,059	(562)	1,277,787	(9,022)
10/25/2019	\$55.20	\$1.72	\$1.66	\$0.01	\$1.97	\$0.04	438,853	5,702	220,057	(3,037)	119,754	(1,032)	39,662	(805)	28,305	246	1,275,562	(2,225)
11/1/2019	\$55.17	(\$0.03)	\$1.67	\$0.01	\$1.93	(\$0.04)	446,782	7,929	217,229	(2,828)	119,132	(622)	39,393	(269)	28,797	492	1,279,426	3,864
11/8/2019	\$56.69	\$1.52	\$1.65	(\$0.01)	\$1.93	\$0.00	449,001	2,219	219,090	1,861	116,655	(2,477)	39,014	(379)	29,534	737	1,273,566	(5,860)
11/15/2019	\$56.85	\$0.16	\$1.60	(\$0.05)	\$1.91	(\$0.02)	450,380	1,379	220,846	1,756	115,681	(974)	39,592	578	29,355	(179)	1,268,609	(4,957)

Commercial Crude Oil Stocks



Week Ending	WTI	Change	Production	Change	Imports	Change	Exports	Change	Capacity	Inputs	Change	Utilization	Crude Oil Stocks	Change
10/18/2019	\$53.49	\$0.22	12,600	0	5,857	(438)	3683	435	18,125	15,865	429	85.2%	433,151	(1,699)
10/25/2019	\$55.20	\$1.72	12,600	0	6,697	840	3327	(356)	18,125	15,998	133	87.7%	438,853	5,702
11/1/2019	\$55.17	(\$0.03)	12,600	0	6,077	(620)	2371	(956)	18,125	15,761	(237)	86.0%	446,782	7,929
11/8/2019	\$56.69	\$1.52	12,800	200	5,750	(327)	2633	262	18,125	15,916	155	87.8%	449,001	2,219
11/15/2019	\$56.85	\$0.16	12,800	0	5,972	222	3027	394	18,125	16,435	519	89.5%	450,380	1,379