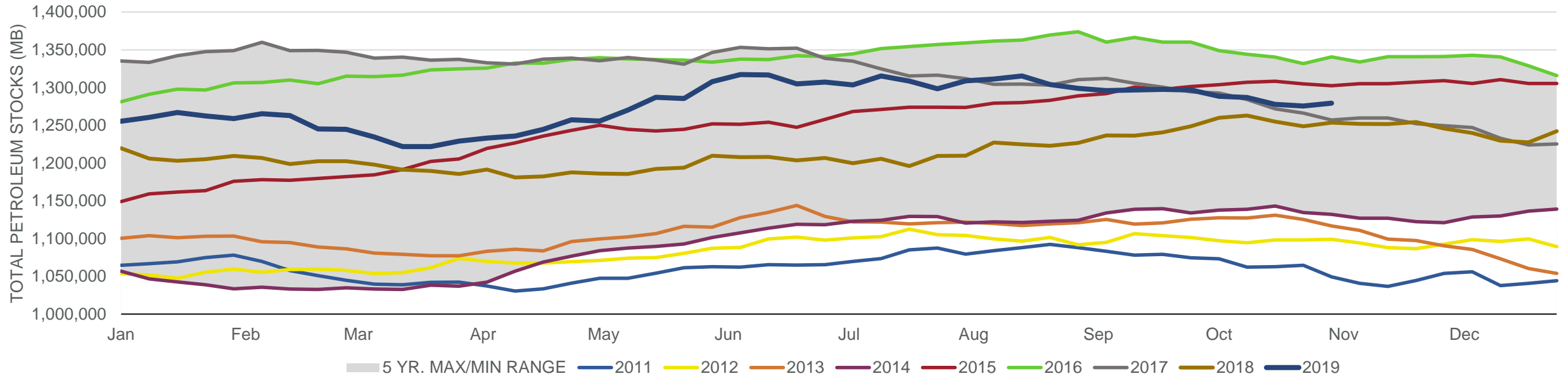
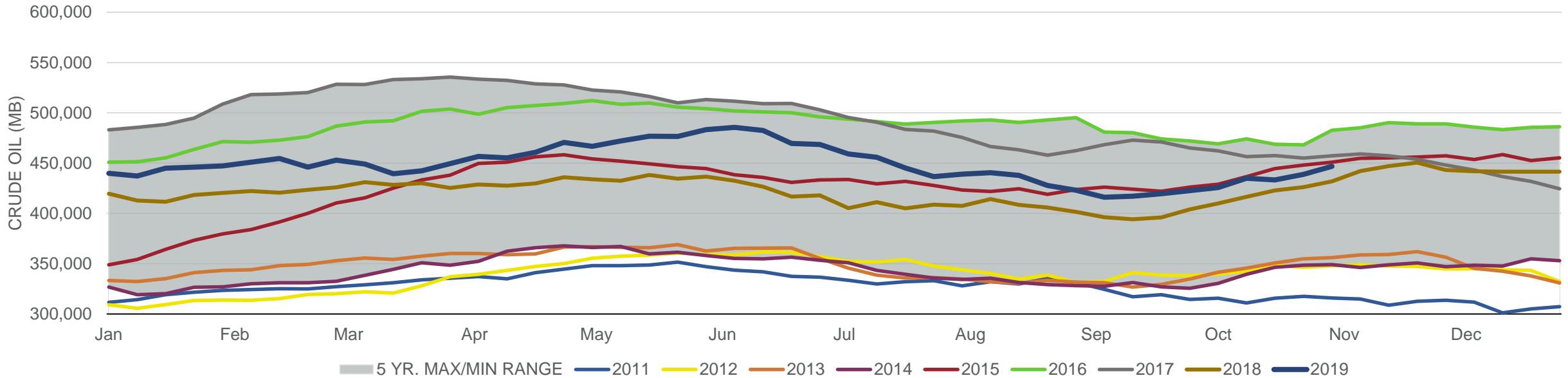


#### Total Petroleum Stocks



Week Ending	WTI	Change	GC Gaso	Change	NY No 2	Change	Crude	Change	Gasol	Change	Distillate	Change	Kero	Change	Resid	Change	Total Stocks	Change
10/4/2019	\$53.12	(\$3.77)	\$1.62	(\$0.09)	\$1.87	(\$0.07)	425,569	2,927	228,763	(1,213)	127,324	(3,943)	44,159	(258)	29,742	(74)	1,288,397	(8,292)
10/11/2019	\$53.27	\$0.15	\$1.64	\$0.02	\$1.91	\$0.03	434,850	9,281	226,201	(2,562)	123,501	(3,823)	42,806	(1,353)	28,621	(1,121)	1,286,809	(1,588)
10/18/2019	\$53.49	\$0.22	\$1.65	\$0.01	\$1.93	\$0.02	433,151	(1,699)	223,094	(3,107)	120,786	(2,715)	40,467	(2,339)	28,059	(562)	1,277,787	(9,022)
10/25/2019	\$55.20	\$1.72	\$1.65	\$0.00	\$1.97	\$0.04	438,853	5,702	220,057	(3,037)	119,754	(1,032)	39,662	(805)	28,305	246	1,275,562	(2,225)
11/1/2019	\$55.17	(\$0.03)	\$1.67	\$0.02	\$1.93	(\$0.04)	446,782	7,929	217,229	(2,828)	119,132	(622)	39,393	(269)	28,797	492	1,279,426	3,864

#### Commercial Crude Oil Stocks



Week Ending	WTI	Change	Production	Change	Imports	Change	Exports	Change	Capacity	Inputs	Change	Utilization	Crude Oil Stocks	Change
10/4/2019	\$53.12	(\$3.77)	12,600	200	6,224	(67)	3401	534	18,125	15,656	(361)	85.7%	425,569	2,927
10/11/2019	\$53.27	\$0.15	12,600	0	6,295	71	3248	(153)	18,125	15,436	(220)	83.1%	434,850	9,281
10/18/2019	\$53.49	\$0.22	12,600	0	5,857	(438)	3683	435	18,125	15,865	429	85.2%	433,151	(1,699)
10/25/2019	\$55.20	\$1.72	12,600	0	6,697	840	3327	(356)	18,125	15,998	133	87.7%	438,853	5,702
11/1/2019	\$55.17	(\$0.03)	12,600	0	6,077	(620)	2371	(956)	18,125	15,761	(237)	86.0%	446,782	7,929