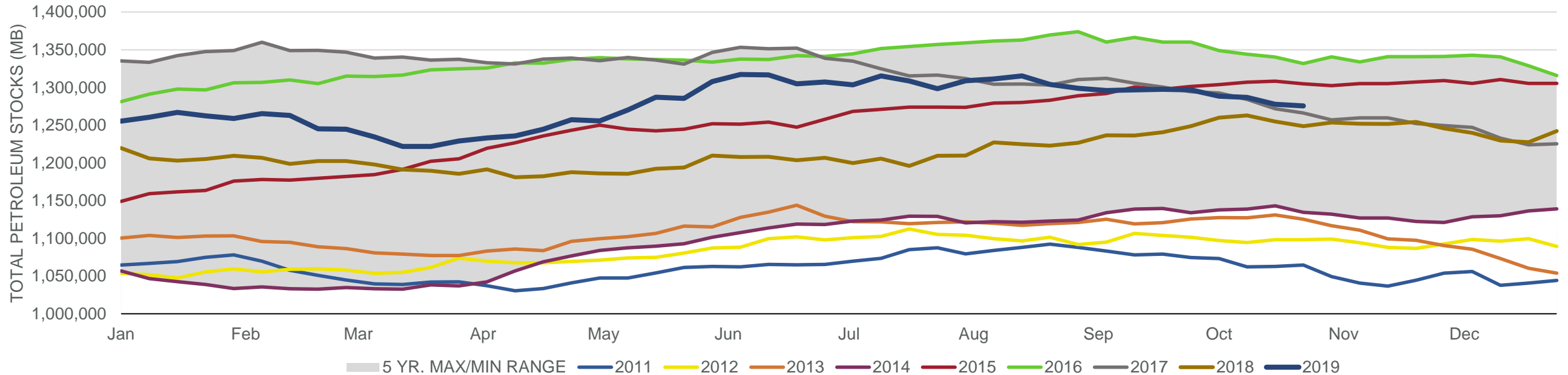
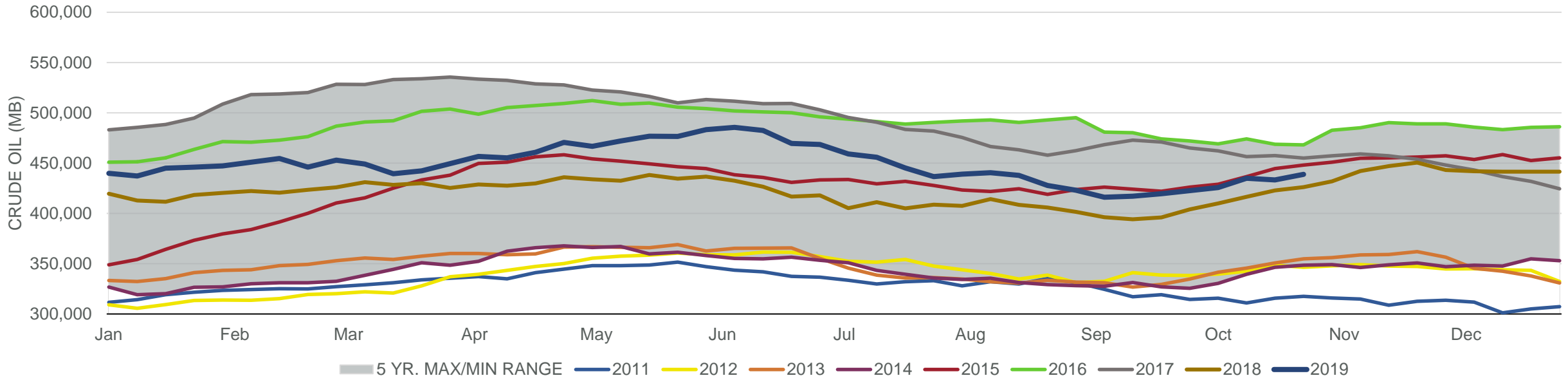


Total Petroleum Stocks



Week Ending	WTI	Change	GC Gaso	Change	NY No 2	Change	Crude	Change	Gasoline	Change	Distillate	Change	Kero	Change	Resid	Change	Total Stocks	Change
9/27/2019	\$56.90	(\$2.44)	\$1.71	(\$0.04)	\$1.95	(\$0.06)	422,642	3,104	229,976	(228)	131,267	(2,418)	44,417	(1,036)	29,816	290	1,296,689	(851)
10/4/2019	\$53.12	(\$3.77)	\$1.62	(\$0.09)	\$1.87	(\$0.07)	425,569	2,927	228,763	(1,213)	127,324	(3,943)	44,159	(258)	29,742	(74)	1,288,397	(8,292)
10/11/2019	\$53.27	\$0.15	\$1.64	\$0.02	\$1.91	\$0.03	434,850	9,281	226,201	(2,562)	123,501	(3,823)	42,806	(1,353)	28,621	(1,121)	1,286,809	(1,588)
10/18/2019	\$53.49	\$0.22	\$1.66	\$0.01	\$1.93	\$0.02	433,151	(1,699)	223,094	(3,107)	120,786	(2,715)	40,467	(2,339)	28,059	(562)	1,277,787	(9,022)
10/25/2019	\$55.20	\$1.72	\$1.65	(\$0.00)	\$1.97	\$0.04	438,853	5,702	220,057	(3,037)	119,754	(1,032)	39,662	(805)	28,305	246	1,275,562	(2,225)

Commercial Crude Oil Stocks



Week Ending	WTI	Change	Production	Change	Imports	Change	Exports	Change	Capacity	Inputs	Change	Utilization	Crude Oil Stocks	Change
9/27/2019	\$56.90	(\$2.44)	12,400	(100)	6,291	(87)	2867	(116)	18,125	16,017	(496)	86.4%	422,642	3,104
10/4/2019	\$53.12	(\$3.77)	12,600	200	6,224	(67)	3401	534	18,125	15,656	(361)	85.7%	425,569	2,927
10/11/2019	\$53.27	\$0.15	12,600	0	6,295	71	3248	(153)	18,125	15,436	(220)	83.1%	434,850	9,281
10/18/2019	\$53.49	\$0.22	12,600	0	5,857	(438)	3683	435	18,125	15,865	429	85.2%	433,151	(1,699)
10/25/2019	\$55.20	\$1.72	12,600	0	6,697	840	3327	(356)	18,125	15,998	133	87.7%	438,853	5,702