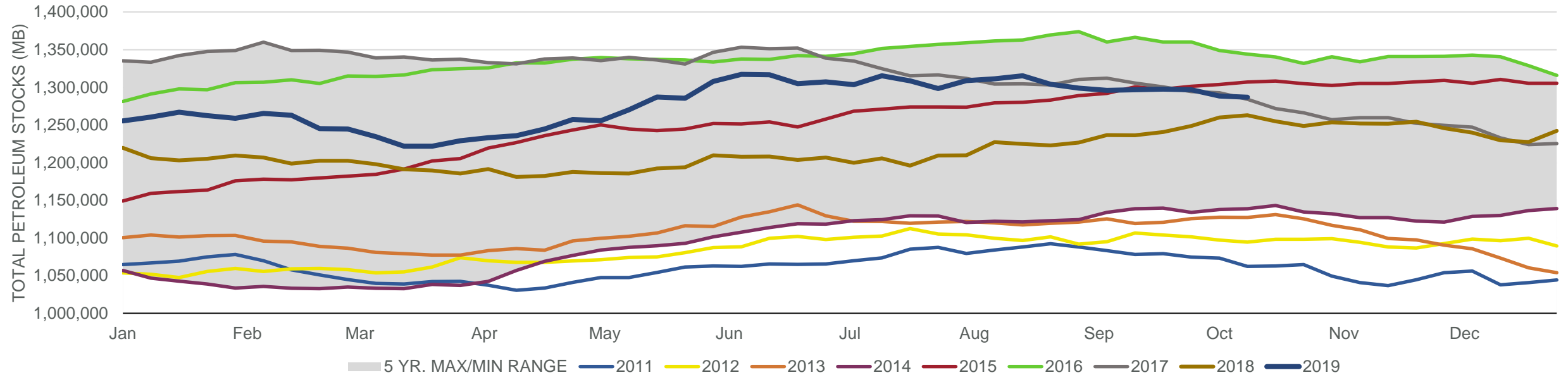
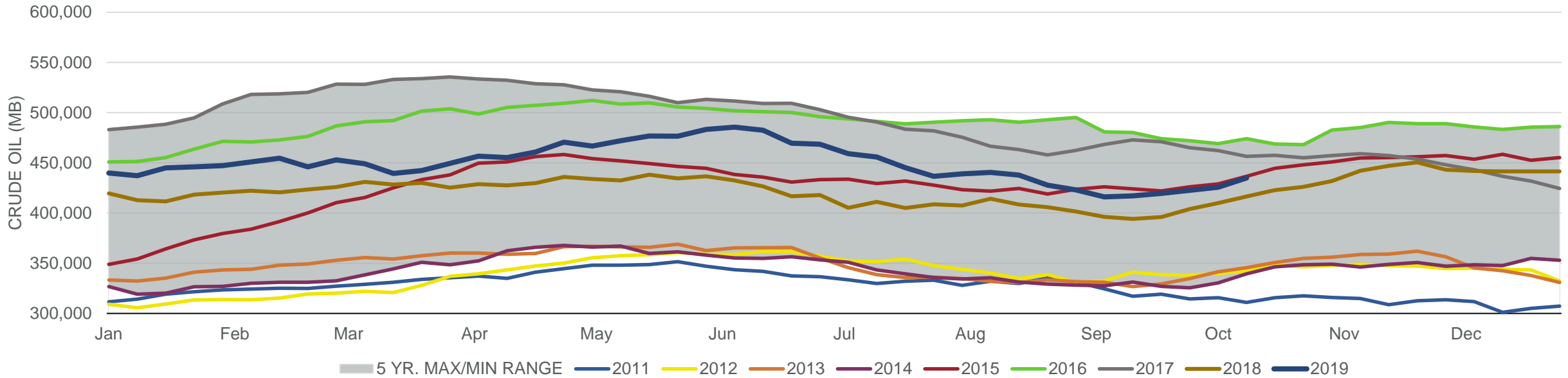


#### Total Petroleum Stocks



Week Ending	WTI	Change	GC Gaso	Change	NY No 2	Change	Crude	Change	Gasoline	Change	Distillate	Change	Kero	Change	Resid	Change	Total Stocks	Change
9/13/2019	\$57.20	\$1.05	\$1.67	\$0.06	\$1.92	\$0.06	417,126	1,058	229,685	781	136,663	437	43,592	(893)	28,605	(636)	1,296,841	884
9/20/2019	\$58.45	\$1.25	\$1.74	\$0.07	\$1.99	\$0.06	419,538	2,412	230,204	519	133,685	(2,978)	45,453	1,861	29,526	921	1,297,540	699
9/27/2019	\$55.98	(\$2.47)	\$1.70	(\$0.04)	\$1.93	(\$0.06)	422,642	3,104	229,976	(228)	131,267	(2,418)	44,417	(1,036)	29,816	290	1,296,689	(851)
10/4/2019	\$52.86	(\$3.12)	\$1.62	(\$0.08)	\$1.88	(\$0.05)	425,569	2,927	228,763	(1,213)	127,324	(3,943)	44,159	(258)	29,742	(74)	1,288,397	(8,292)
10/11/2019	\$53.43	\$0.58	\$1.64	\$0.02	\$1.91	\$0.03	434,850	9,281	226,201	(2,562)	123,501	(3,823)	42,806	(1,353)	28,621	(1,121)	1,286,809	(1,588)

#### Commercial Crude Oil Stocks



Week Ending	WTI	Change	Production	Change	Imports	Change	Exports	Change	Capacity	Inputs	Change	Utilization	Crude Oil Stocks	Change
9/13/2019	\$57.20	\$1.05	12,400	0	7,050	325	3175	(120)	18,125	16,707	(788)	91.2%	417,126	1,058
9/20/2019	\$58.45	\$1.25	12,500	100	6,378	(672)	2983	(192)	18,125	16,513	(194)	89.8%	419,538	2,412
9/27/2019	\$55.98	(\$2.47)	12,400	(100)	6,291	(87)	2867	(116)	18,125	16,017	(496)	86.4%	422,642	3,104
10/4/2019	\$52.86	(\$3.12)	12,600	200	6,224	(67)	3401	534	18,125	15,656	(361)	85.7%	425,569	2,927
10/11/2019	\$53.43	\$0.58	12,600	0	6,295	71	3248	(153)	18,125	15,436	(220)	83.1%	434,850	9,281