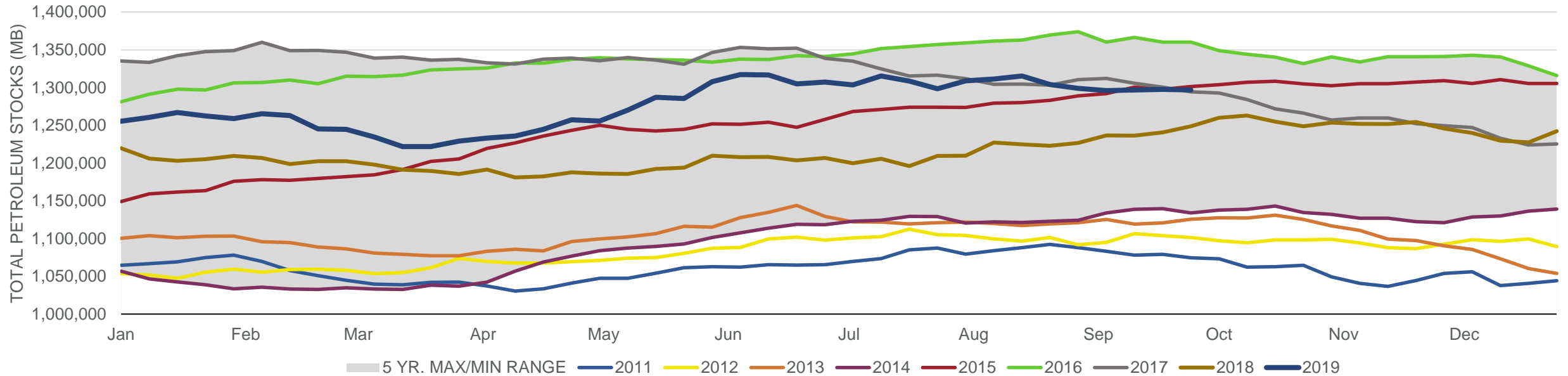
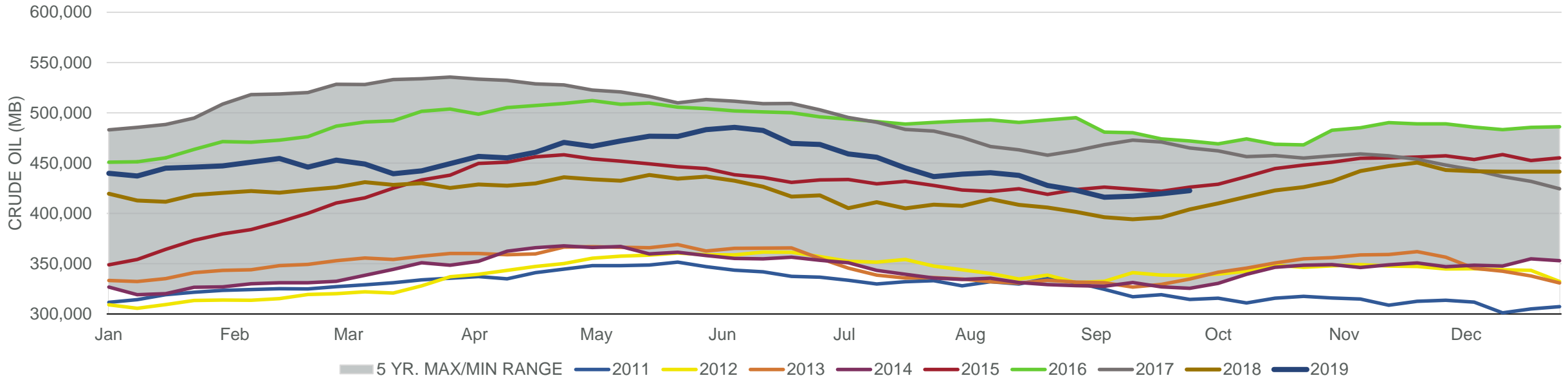


Total Petroleum Stocks



Week Ending	WTI	Change	GC Gaso	Change	NY No 2	Change	Crude	Change	Gasol	Change	Distillate	Change	Kero	Change	Resid	Change	Total Stocks	Change
8/30/2019	\$55.21	(\$0.29)	\$1.76	\$0.07	\$1.80	(\$0.00)	422,980	(4,771)	229,586	(2,396)	133,522	(2,538)	42,636	939	30,066	(1,627)	1,299,096	(4,949)
9/6/2019	\$55.73	\$0.52	\$1.62	(\$0.14)	\$1.84	\$0.04	416,068	(6,912)	228,904	(682)	136,226	2,704	44,485	1,849	29,241	(825)	1,295,957	(3,139)
9/13/2019	\$56.16	\$0.43	\$1.65	\$0.02	\$1.89	\$0.05	417,126	1,058	229,685	781	136,663	437	43,592	(893)	28,605	(636)	1,296,841	884
9/20/2019	\$59.33	\$3.17	\$1.73	\$0.08	\$2.01	\$0.11	419,538	2,412	230,204	519	133,685	(2,978)	45,453	1,861	29,526	921	1,297,540	699
9/27/2019	\$56.90	(\$2.44)	\$1.72	(\$0.01)	\$1.95	(\$0.06)	422,642	3,104	229,976	(228)	131,267	(2,418)	44,417	(1,036)	29,816	290	1,296,689	(851)

Commercial Crude Oil Stocks



Week Ending	WTI	Change	Production	Change	Imports	Change	Exports	Change	Capacity	Inputs	Change	Utilization	Crude Oil Stocks	Change
8/30/2019	\$55.21	(\$0.29)	12,400	(100)	6,904	976	3061	42	18,125	17,381	(27)	94.8%	422,980	(4,771)
9/6/2019	\$55.73	\$0.52	12,400	0	6,725	(179)	3295	234	18,125	17,495	114	95.1%	416,068	(6,912)
9/13/2019	\$56.16	\$0.43	12,400	0	7,050	325	3175	(120)	18,125	16,707	(788)	91.2%	417,126	1,058
9/20/2019	\$59.33	\$3.17	12,500	100	6,378	(672)	2983	(192)	18,125	16,513	(194)	89.8%	419,538	2,412
9/27/2019	\$56.90	(\$2.44)	12,400	(100)	6,291	(87)	2867	(116)	18,125	16,017	(496)	86.4%	422,642	3,104