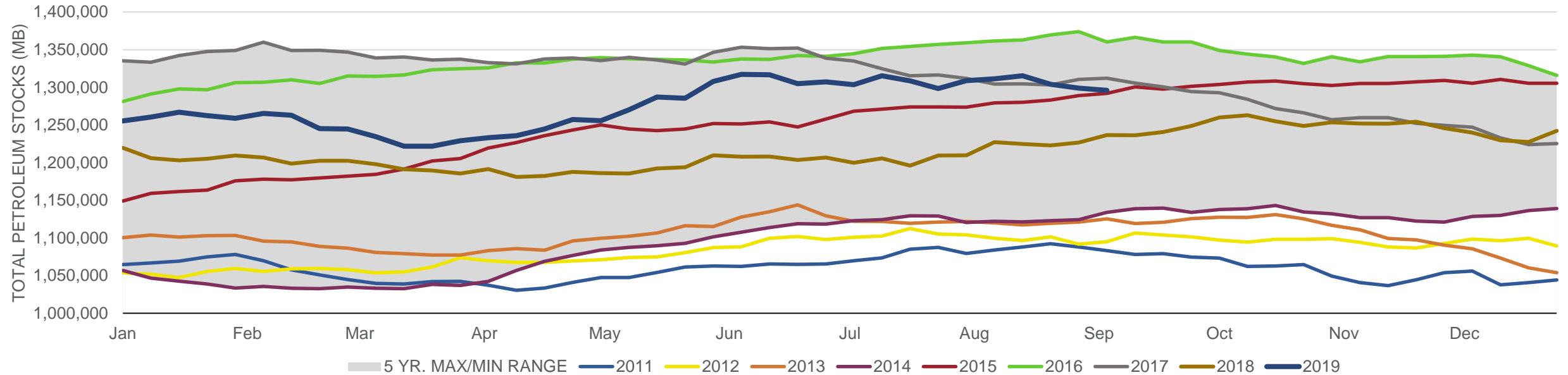
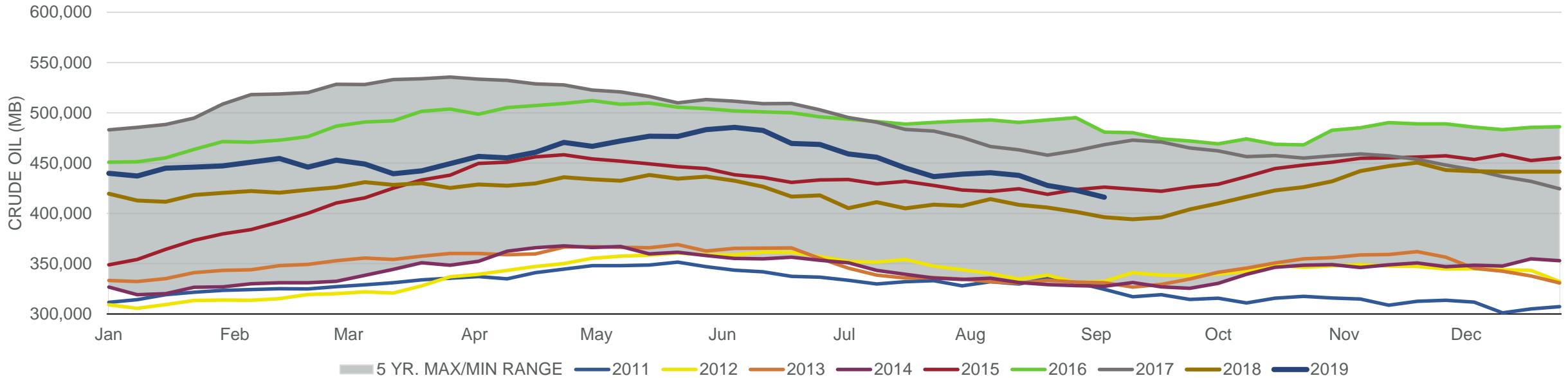


Total Petroleum Stocks



Week Ending	WTI	Change	GC Gaso	Change	NY No 2	Change	Crude	Change	Gasoline	Change	Distillate	Change	Kero	Change	Resid	Change	Total Stocks	Change
8/9/2019	\$53.28	(\$3.27)	\$1.67	(\$0.16)	\$1.78	(\$0.10)	440,510	1,580	233,760	(1,412)	135,513	(1,938)	42,028	(716)	30,817	(1,015)	1,311,223	2,407
8/16/2019	\$55.31	\$2.03	\$1.62	(\$0.05)	\$1.79	\$0.00	437,778	(2,732)	234,072	312	138,123	2,610	41,348	(680)	29,986	(831)	1,315,225	4,002
8/23/2019	\$55.50	\$0.19	\$1.69	\$0.07	\$1.80	\$0.01	427,751	(10,027)	231,982	(2,090)	136,060	(2,063)	41,697	349	31,693	1,707	1,304,045	(11,180)
8/30/2019	\$55.21	(\$0.29)	\$1.75	\$0.06	\$1.80	(\$0.00)	422,980	(4,771)	229,586	(2,396)	133,522	(2,538)	42,636	939	30,066	(1,627)	1,299,096	(4,949)
9/6/2019	\$55.73	\$0.52	\$1.65	(\$0.10)	\$1.84	\$0.04	416,068	(6,912)	228,904	(682)	136,226	2,704	44,485	1,849	29,241	(825)	1,295,957	(3,139)

Commercial Crude Oil Stocks



Week Ending	WTI	Change	Production	Change	Imports	Change	Exports	Change	Capacity	Inputs	Change	Utilization	Crude Oil Stocks	Change
8/9/2019	\$53.28	(\$3.27)	12,300	0	7,714	566	2683	818	18,125	17,302	(475)	94.8%	440,510	1,580
8/16/2019	\$55.31	\$2.03	12,300	0	7,218	(496)	2803	120	18,125	17,702	400	95.9%	437,778	(2,732)
8/23/2019	\$55.50	\$0.19	12,500	200	5,928	(1,290)	3019	216	18,125	17,408	(294)	95.2%	427,751	(10,027)
8/30/2019	\$55.21	(\$0.29)	12,400	(100)	6,904	976	3061	42	18,125	17,381	(27)	94.8%	422,980	(4,771)
9/6/2019	\$55.73	\$0.52	12,400	0	6,725	(179)	3295	234	18,125	17,495	114	95.1%	416,068	(6,912)