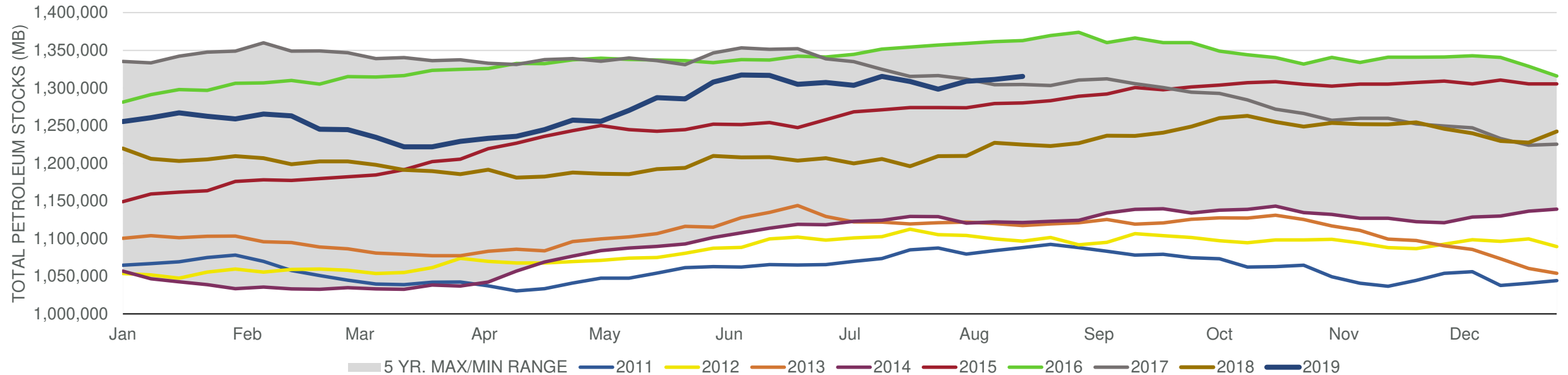


## EIA Weekly Petroleum Status Report

Week Ending: 08/16/2019

Total Stocks: **4,002 Mb** Crude Oil Stocks (excl. SPR): **-2,732 Mb** Production: **0 Mbd**

### Total Petroleum Stocks



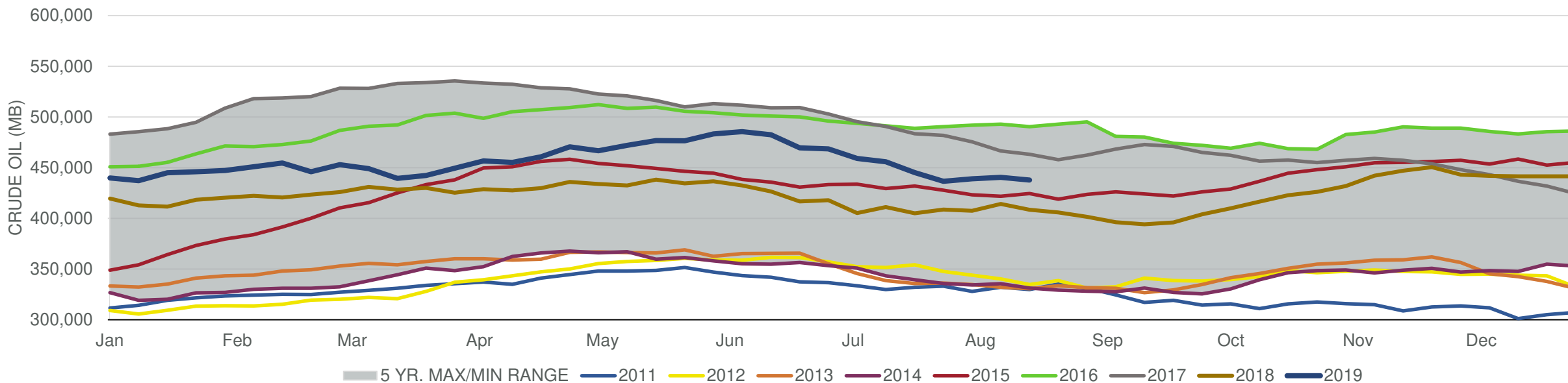
Week Ending	WTI	Change	GC Gaso	Change	NY No 2	Change	Crude	Change	Gasoline	Change	Distillate	Change	Kero	Change	Resid	Change	Total Stocks	Change
7/19/2019	\$56.75	(\$2.28)	\$1.82	(\$0.10)	\$1.87	(\$0.05)	445,041	(10,835)	232,526	(226)	136,816	613	42,429	1,015	31,236	1,075	1,308,542	(6,687)
7/26/2019	\$56.05	(\$0.69)	\$1.81	(\$0.01)	\$1.88	\$0.01	436,545	(8,496)	230,735	(1,791)	135,922	(894)	42,016	(413)	29,599	(1,637)	1,298,403	(10,139)
8/2/2019	\$56.55	\$0.49	\$1.82	\$0.00	\$1.88	(\$0.00)	438,930	2,385	235,172	4,437	137,451	1,529	42,744	728	31,832	2,233	1,308,816	10,413
8/9/2019	\$53.28	(\$3.27)	\$1.67	(\$0.15)	\$1.77	(\$0.11)	440,510	1,580	233,760	(1,412)	135,513	(1,938)	42,028	(716)	30,817	(1,015)	1,311,223	2,407
8/16/2019	\$55.31	\$2.03	\$1.62	(\$0.05)	\$1.79	\$0.02	437,778	(2,732)	234,072	312	138,123	2,610	41,348	(680)	29,986	(831)	1,315,225	4,002

# EIA Weekly Petroleum Status Report

Week Ending: 08/16/2019

Total Stocks: **4,002 Mb** Crude Oil Stocks (excl. SPR): **-2,732 Mb** Production: **0 Mbd**

## Commercial Crude Oil Stocks



Week Ending	WTI	Change	Production	Change	Imports	Change	Exports	Change	Capacity	Inputs	Change	Utilization	Crude Oil Stocks	Change
7/19/2019	\$56.75	(\$2.28)	11,300	(700)	7,028	196	3292	758	18,125	17,034	(233)	93.1%	445,041	(10,835)
7/26/2019	\$56.05	(\$0.69)	12,200	900	6,663	(365)	2574	(718)	18,125	16,991	(43)	93.0%	436,545	(8,496)
8/2/2019	\$56.55	\$0.49	12,300	100	7,148	485	1865	(709)	18,125	17,777	786	96.4%	438,930	2,385
8/9/2019	\$53.28	(\$3.27)	12,300	0	7,714	566	2683	818	18,125	17,302	(475)	94.8%	440,510	1,580
8/16/2019	\$55.31	\$2.03	12,300	0	7,218	(496)	2803	120	18,125	17,702	400	95.9%	437,778	(2,732)