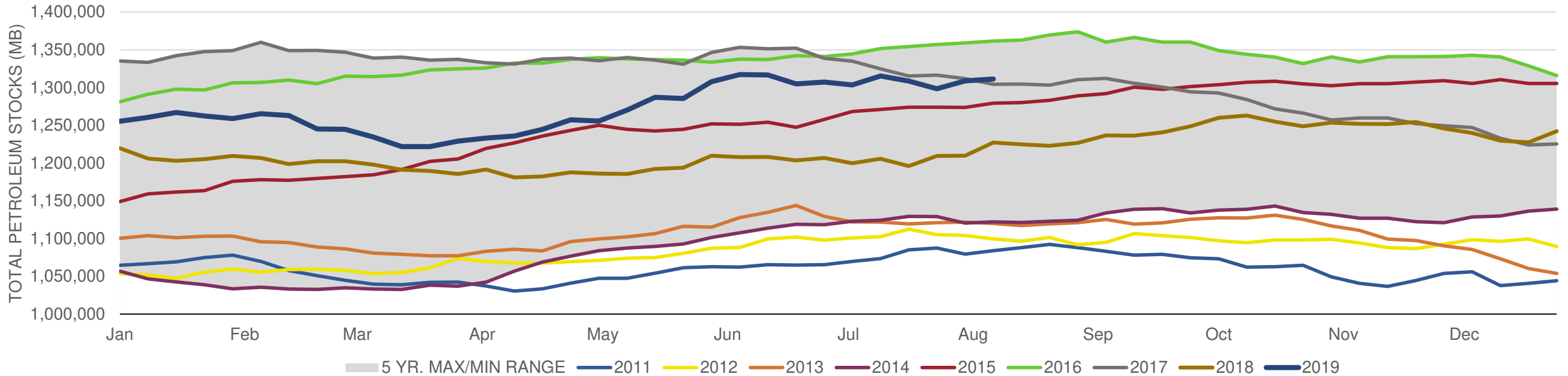


EIA Weekly Petroleum Status Report

Week Ending: 08/09/2019

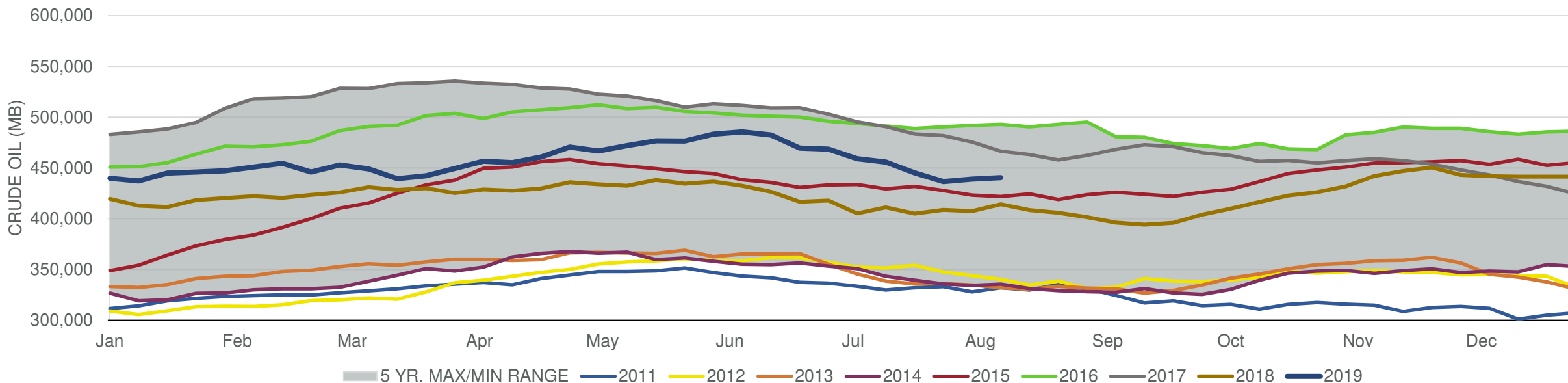
Total Stocks: **2,407 Mb** Crude Oil Stocks (excl. SPR): **1,580 Mb** Production: **0 Mbd**

Total Petroleum Stocks



Week Ending	WTI	Change	GC Gaso	Change	NY No 2	Change	Crude	Change	Gasoline	Change	Distillate	Change	Kero	Change	Resid	Change	Total Stocks	Change
7/12/2019	\$59.02	\$1.70	\$1.92	\$0.07	\$1.92	\$0.03	455,876	(3,116)	232,752	3,565	136,203	5,686	41,414	378	30,161	410	1,315,229	11,659
7/19/2019	\$56.75	(\$2.28)	\$1.82	(\$0.10)	\$1.87	(\$0.05)	445,041	(10,835)	232,526	(226)	136,816	613	42,429	1,015	31,236	1,075	1,308,542	(6,687)
7/26/2019	\$56.05	(\$0.69)	\$1.81	(\$0.01)	\$1.88	\$0.01	436,545	(8,496)	230,735	(1,791)	135,922	(894)	42,016	(413)	29,599	(1,637)	1,298,403	(10,139)
8/2/2019	\$56.55	\$0.49	\$1.83	\$0.02	\$1.88	(\$0.00)	438,930	2,385	235,172	4,437	137,451	1,529	42,744	728	31,832	2,233	1,308,816	10,413
8/9/2019	\$53.28	(\$3.27)	\$1.67	(\$0.16)	\$1.77	(\$0.11)	440,510	1,580	233,760	(1,412)	135,513	(1,938)	42,028	(716)	30,817	(1,015)	1,311,223	2,407

Commercial Crude Oil Stocks



Week Ending	WTI	Change	Production	Change	Imports	Change	Exports	Change	Capacity	Inputs	Change	Utilization	Crude Oil Stocks	Change
7/12/2019	\$59.02	\$1.70	12,000	(300)	6,832	(470)	2534	(514)	18,125	17,267	(171)	94.4%	455,876	(3,116)
7/19/2019	\$56.75	(\$2.28)	11,300	(700)	7,028	196	3292	758	18,125	17,034	(233)	93.1%	445,041	(10,835)
7/26/2019	\$56.05	(\$0.69)	12,200	900	6,663	(365)	2574	(718)	18,125	16,991	(43)	93.0%	436,545	(8,496)
8/2/2019	\$56.55	\$0.49	12,300	100	7,148	485	1865	(709)	18,125	17,777	786	96.4%	438,930	2,385
8/9/2019	\$53.28	(\$3.27)	12,300	0	7,714	566	2683	818	18,125	17,302	(475)	94.8%	440,510	1,580