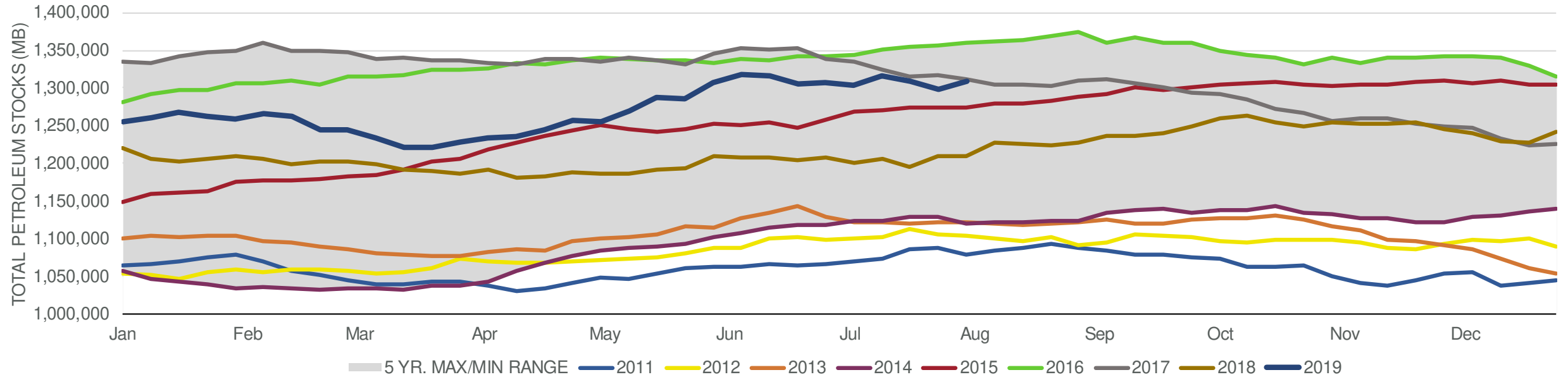
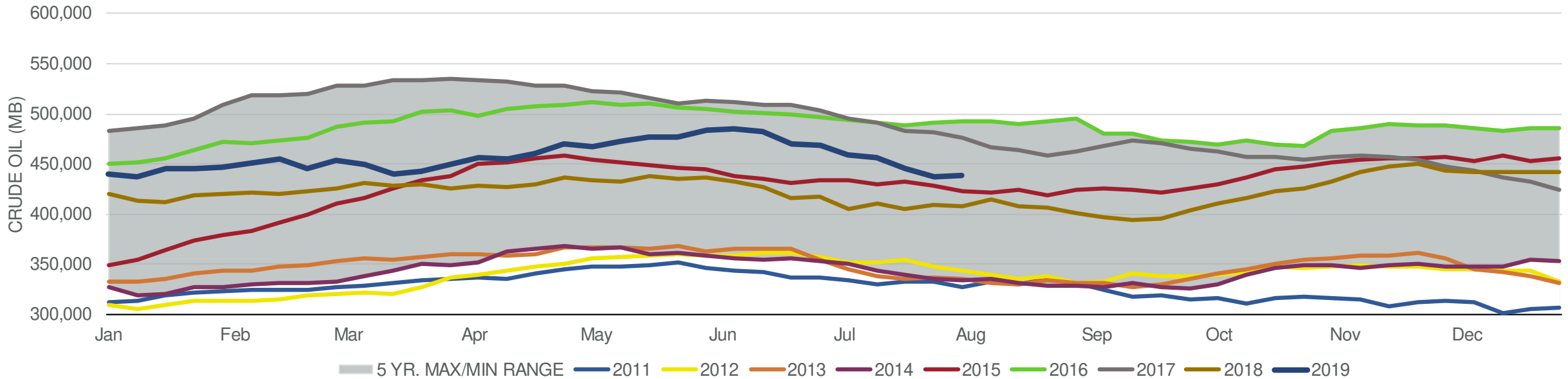


Total Petroleum Stocks



Week Ending	WTI	Change	GC Gaso	Change	NY No 2	Change	Crude	Change	Gasoline	Change	Distillate	Change	Kero	Change	Resid	Change	Total Stocks	Change
7/5/2019	\$57.32	(\$1.06)	\$1.85	\$0.05	\$1.89	\$0.00	458,992	(9,499)	229,187	(1,455)	130,517	3,729	41,036	1,654	29,751	1,113	1,303,570	(3,784)
7/12/2019	\$59.02	\$1.70	\$1.92	\$0.07	\$1.92	\$0.03	455,876	(3,116)	232,752	3,565	136,203	5,686	41,414	378	30,161	410	1,315,229	11,659
7/19/2019	\$56.75	(\$2.28)	\$1.82	(\$0.10)	\$1.87	(\$0.05)	445,041	(10,835)	232,526	(226)	136,816	613	42,429	1,015	31,236	1,075	1,308,542	(6,687)
7/26/2019	\$56.05	(\$0.69)	\$1.80	(\$0.02)	\$1.88	\$0.01	436,545	(8,496)	230,735	(1,791)	135,922	(894)	42,016	(413)	29,599	(1,637)	1,298,403	(10,139)
8/2/2019	\$56.55	\$0.49	\$1.83	\$0.03	\$1.88	(\$0.00)	438,930	2,385	235,172	4,437	137,451	1,529	42,744	728	31,832	2,233	1,308,816	10,413

Commercial Crude Oil Stocks



Week Ending	WTI	Change	Production	Change	Imports	Change	Exports	Change	Capacity	Inputs	Change	Utilization	Crude Oil Stocks	Change
7/5/2019	\$57.32	(\$1.06)	12,300	100	7,302	(283)	3048	58	18,125	17,438	148	94.7%	458,992	(9,499)
7/12/2019	\$59.02	\$1.70	12,000	(300)	6,832	(470)	2534	(514)	18,125	17,267	(171)	94.4%	455,876	(3,116)
7/19/2019	\$56.75	(\$2.28)	11,300	(700)	7,028	196	3292	758	18,125	17,034	(233)	93.1%	445,041	(10,835)
7/26/2019	\$56.05	(\$0.69)	12,200	900	6,663	(365)	2574	(718)	18,125	16,991	(43)	93.0%	436,545	(8,496)
8/2/2019	\$56.55	\$0.49	12,300	100	7,148	485	1865	(709)	18,125	17,777	786	96.4%	438,930	2,385