

UIC Permit Application Monitor

Central Basin Platform & Delaware Basin

Contact: Abigail Michel – amichel@b3insight.com

Current Two Weeks: DATE

Previous Two Weeks: DATE

Highlights

- Reeves County and Loving County were hotspots for new and approved applications in the current and previous two weeks. In Reeves County, there were 15 new injection well applications with a requested cumulative capacity of 430,000 bbl/day. Also in Reeves County, 10 new wells were approved, with a cumulative capacity of 245,000 bbl/day. In Loving County, six of the nine new applications were for new wells, requesting a cumulative capacity of 170,000 bbl/day. In addition, 15 new wells in Loving County were approved for a cumulative capacity of 485,000 bbl/day. *See pages 2,6, "New Applications" and "Approved Applications" sections.*
- Chevron U.S.A. Inc. submitted an application in the previous two weeks requesting 100,000 bbl/day of injection volume for a single non-commercial well in Culberson County. *See page 5.*
- Luxe Operating, LLC was approved for 30,000 bbl/day, when it originally requested 25,000 bbl/day. Originally, Luxe was instructed by the RRC to reduce the injection volume to 20,000 bbl/day. This is a result of the RRC's seismic review process, where the originally requested permit conditions were likely classified as a Score "B" well. However, Luxe agreed to RRC's seismic monitoring plan, which allowed it to gain an additional 10,000 bbl/day in permitted injection volume. *See pages 10,13.*
- PRI Operating, LLC (along with other operators within the Permian Basin) has taken initiative to speed up its permit approval time by consenting to an injectivity test on the initial application (to avoid a RADLTR request for an injectivity test). *See page 5.*
- RRC has become stricter on protest letters. RRC will no longer accept protests if they are not received "within 15 days of receipt of the application or of publication, whichever is later." If the protest is not received within this time frame, then the protest is deemed a "public comment only." See Statewide Rule 9 for more information.

Overview: UIC Permit Applications

▲ New Applications

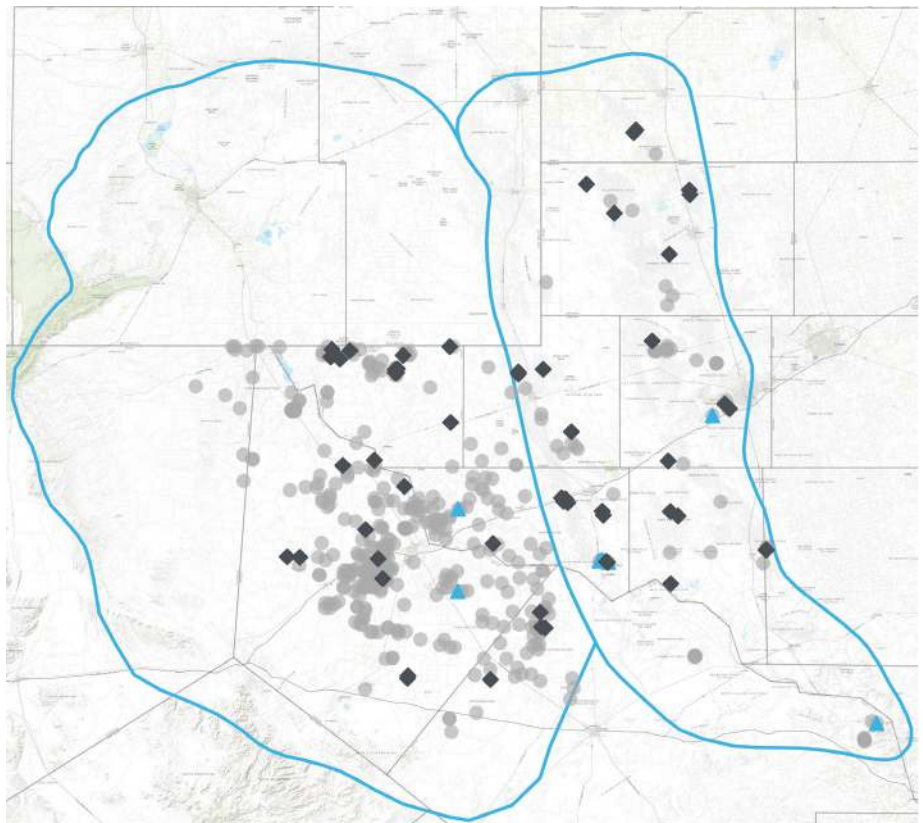
	Current Two Weeks	Previous Two Weeks
New	2	32
Amendments	6	7
Total	8	39

◆ Approved Applications

	Current Two Weeks	Previous Two Weeks
New	39	13
Amendments	18	5
Total	57	18

● Pending Applications (All)

	Current 7/15/16 7/15/19	Previous 7/1/16 7/1/19
New	336	334
Amendments	55	49
Total	391	383



Pending Applications are ALL applications that have a stamp date between the defined date ranges, have not received a permit approval, and have not been withdrawn or returned.

UIC Permit Application Monitor

Central Basin Platform & Delaware Basin

Contact: Abigail Michel – amichel@b3insight.com

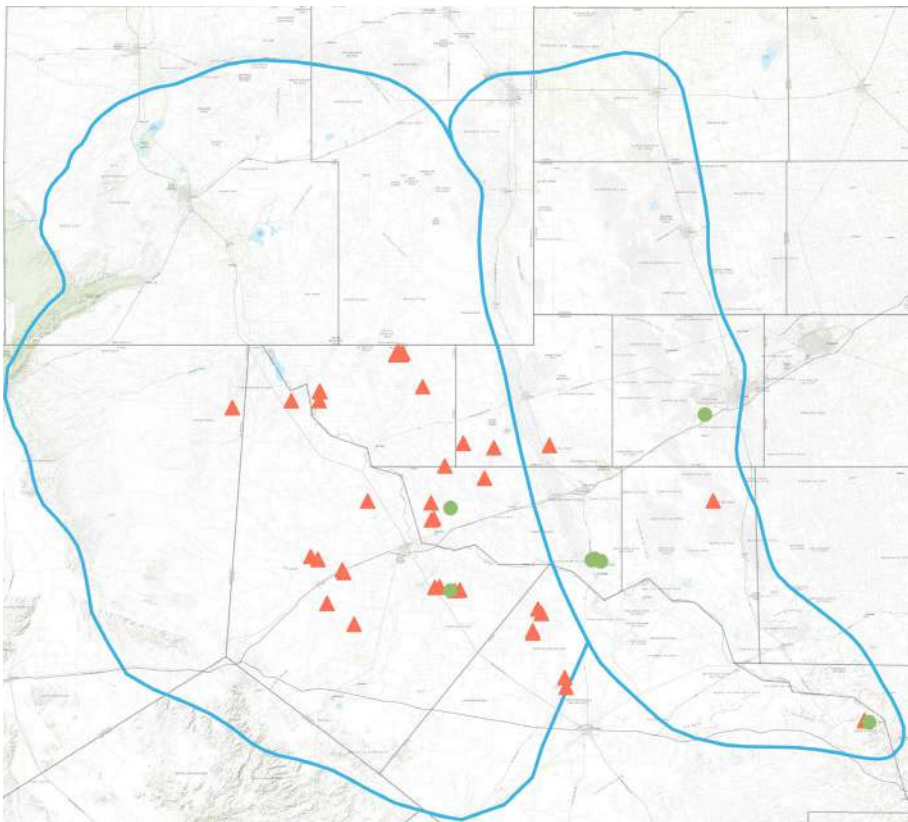
Section I. New Applications

Current Two Weeks: DATE

Previous Two Weeks: DATE

Time Period	Basin	Submitted	New	Amendment	Commercial
Current 2 Weeks	Central Basin Platform	6	0	6	0
	Delaware Basin	2	2	0	1
	Central Basin Platform & Delaware Basin	8	2	6	1
Previous 2 Weeks	Central Basin Platform	3	0	3	0
	Delaware Basin	36	32	4	19
	Central Basin Platform & Delaware Basin	39	32	7	19
Last 60 Days	Central Basin Platform	42	11	31	1
	Delaware Basin	97	90	7	48
	Central Basin Platform & Delaware Basin	139	101	38	49
Last 180 Days	Central Basin Platform	159	73	86	6
	Delaware Basin	306	269	37	136
	Central Basin Platform & Delaware Basin	465	342	123	142

● Current Two Weeks ▲ Previous Two Weeks



County	Current Two Weeks	Previous Two Weeks
Central Basin Platform		
ANDREWS	0	0
BROOKS	0	0
CRANE	0	1
CROCKETT	0	0
ECTOR	1	0
GAINES	0	0
MIDLAND	0	0
PECOS	1	1
UPTON	0	0
WARD	4	0
WINKLER	0	1
Delaware Basin		
CULBERSON	0	1
LOVING	0	9
MIDLAND	0	0
PECOS	0	6
REEVES	1	14
REFUGIO	0	0
WARD	1	4
WINKLER	0	2

SAMPLE REPORT ONLY

UIC Permit Application Monitor

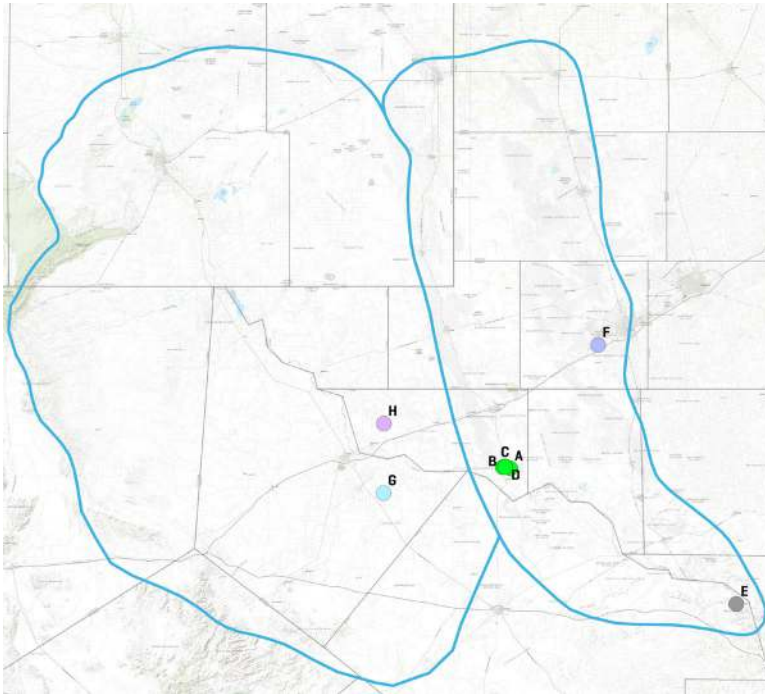
Central Basin Platform & Delaware Basin

Contact: Abigail Michel – amichel@b3insight.com

Current Two Weeks: DATE

Previous Two Weeks: DATE

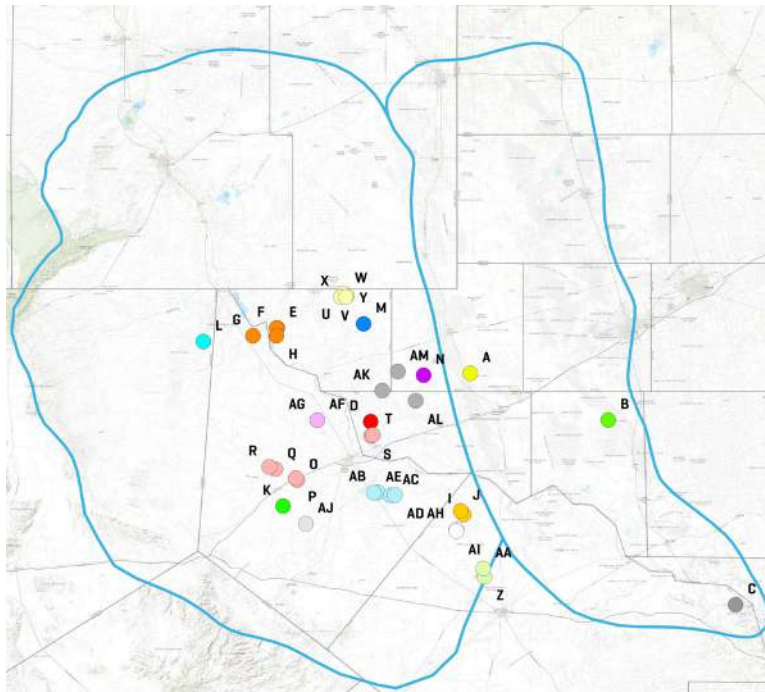
New Applications: Current Two Weeks by Operator



- CBP OPERATING LLC [A,B,C,D]
- KINDER MORGAN PRODUCTION CO LLC [E]
- PRI OPERATING, LLC [G]
- RAPTOR PETROLEUM DEVELOP, LLC [F]
- SEDALIA OPERATING, LLC [H]

Reference Page 4, Table 1 for current two-week operator detail.

New Applications: Previous Two Weeks by Operator



- ADVANCE ENERGY PARTNERS, LLC [D]
- BHP BILLITON PET (TX GATH), LLC [E,F,G,H]
- BLACK MOUNTAIN SWD LP [I,J]
- BLACKBEARD OPERATING, LLC [A]
- BURLINGTON RES O & G CO-MIDLAND [B]
- CARIBBEAN ENERGY, L.L.C. [K]
- CHEVRON U. S. A. INC. [L]
- COG OPERATING LLC [M]
- FELIX WATER, LLC [N]
- KINDER MORGAN PRODUCTION CO LLC [C]
- LUXE OPERATING LLC [O,P,Q,R,S,T]
- MESQUITE SWD INC [U,V,W,X,Y]
- MONGOOSE ENERGY, LLC [Z,AA]
- PRI OPERATING, LLC [AB,AC,AD,AE]
- SEGURO OIL AND GAS, LLC [AF,AG]
- TAB ECTOR LLC [AH,AI]
- TEJAS PERMIAN OPERATING, LLC [AJ]
- UL WATER MIDSTREAM LLC [AK,AL,AM]

Reference Page 5, Table 2 for previous two-week operator detail.



SAMPLE REPORT ONLY

UIC Permit Application Monitor
 Central Basin Platform & Delaware Basin
 Contact: Abigail Michel – amichel@b3insight.com

Table 1: New Applications - Current Two Weeks

Current Two Weeks: DATE

Previous Two Weeks: DATE

C or NC: C = Commercial, NC = Non-Commercial

Map Id	Tracking #	Well #	Stamp Date	County	Operator	Req. Inj. [bbl]	Req. Inj. [psig]	Inj. Interval [ft]	C or NC	API	New or Amend	UIC #
Central Basin Platform												
A	51139	1410W	7/2/19	WARD	CBP OPERATING LLC	2,500	1,257	2,514-2,609	NC	42-475-11297	Amend	19804
B	51140	306W	7/2/19	WARD	CBP OPERATING LLC	2,500	1,213	2,426-3,070	NC	42-475-04029	Amend	19755
C	51141	605W	7/2/19	WARD	CBP OPERATING LLC	2,500	1,170	2,340-2,730	NC	42-475-04214	Amend	19762
D	51142	627W	7/2/19	WARD	CBP OPERATING LLC	2,500	1,185	2,370-2,720	NC	42-475-04192	Amend	19772
E	51149	21A30	7/3/19	PECOS	KINDER MORGAN PRODUCTION CO LLC	30,000	625	1,278-1,600	NC	42-371-36017	Amend	89607
F	51126	1	7/2/19	ECTOR	RAPTOR PETROLEUM DEVELOP, LLC	15,000	2,500	6,146-6,372	NC	42-135-32095	Amend	116380
Delaware Basin												
G	51152	1SW	7/3/19	REEVES	PRI OPERATING, LLC	30,000	2,750	5,500-7,500	NC	42-389-00000	New	N/A
H	51145	1D	7/2/19	WARD	SEDALIA OPERATING, LLC	25,000	2,700	5,400-8,450	C	42-475-37945	New	N/A

SAMPLE REPORT ONLY

UIC Permit Application Monitor

Central Basin Platform & Delaware Basin

Contact: Abigail Michel – amichel@b3insight.com

Table 2: New Applications - Previous Two Weeks

Current Two Weeks: DATE

Previous Two Weeks: DATE

C or NC: C = Commercial, NC = Non-Commercial

Map Id	Tracking #	Well #	Stamp Date	County	Operator	Req. Inj. [bbl]	Req. Inj. [psig]	Inj. Interval [ft]	C or NC	API	New or Amend	UIC #
Central Basin Platform												
A	51073	1SD	6/24/19	WINKLER	BLACKBEARD OPERATING, LLC	17,500	1,950	3,950-6,200	NC	42-495-33926	Amend	117702
B	51056	431W	6/24/19	CRANE	BURLINGTON RES O & G CO-MIDLAND	1,000	1,500	3,186-3,344	NC	42-103-01275	Amend	12332
C	51060	214E85	6/24/19	PECOS	KINDER MORGAN PRODUCTION CO LLC	30,000	650	1,318-1,588	NC	42-371-34734	Amend	56562
Delaware Basin												
D	51020	1	6/18/19	WARD	ADVANCE ENERGY PARTNERS, LLC	30,000	2,350	4,500-8,000	C	42-475-00000	New	N/A
E	51117	707	7/1/19	LOVING	BHP BILLITON PET (TX GATH), LLC	30,000	1,300	3,625-7,685	NC	42-301-00000	New	N/A
F	51118	706	7/1/19	LOVING	BHP BILLITON PET (TX GATH), LLC	30,000	1,300	3,625-7,685	NC	42-301-00000	New	N/A
G	51100	704	6/27/19	REEVES	BHP BILLITON PET (TX GATH), LLC	30,000	1,200	3,155-7,040	NC	42-389-00000	New	N/A
H	51101	705	6/27/19	REEVES	BHP BILLITON PET (TX GATH), LLC	30,000	1,200	3,155-7,030	NC	42-389-00000	New	N/A
I	51094	1	6/26/19	PECOS	BLACK MOUNTAIN SWD LP	25,000	2,410	4,820-7,430	NC	42-371-00000	New	N/A
J	51054	3	6/21/19	PECOS	BLACK MOUNTAIN SWD LP	25,000	2,430	4,860-7,500	NC	42-371-00000	New	N/A
K	51044	1	6/21/19	REEVES	CARIBBEAN ENERGY, L.L.C.	25,000	2,250	4,050-6,800	C	42-389-00000	New	N/A
L	51110	1	6/28/19	CULBERSON	CHEVRON U. S. A. INC.	100,000	3,000	15,150-16,500	NC	42-109-33492	New	N/A
M	51053	1	6/21/19	LOVING	COG OPERATING LLC	25,000	2,550	5,100-7,000	NC	42-301-33788	New	N/A
N	51111	1	6/28/19	WINKLER	FELIX WATER, LLC	40,000	2,450	4,996-7,200	C	42-495-30460	Amend	112040
O	51081	1	6/27/19	REEVES	LUXE OPERATING LLC	25,000	1,019	4,073-6,680	C	42-389-00000	New	N/A
P	51082	1	6/27/19	REEVES	LUXE OPERATING LLC	25,000	1,019	4,073-6,680	C	42-389-00000	New	N/A
Q	51046	1	6/21/19	REEVES	LUXE OPERATING LLC	30,000	926	3,704-6,741	C	42-389-00000	New	N/A
R	51047	1	6/21/19	REEVES	LUXE OPERATING LLC	30,000	926	3,704-6,741	C	42-389-00000	New	N/A
S	51048	1	6/21/19	WARD	LUXE OPERATING LLC	20,000	1,193	4,772-8,006	C	42-475-00000	New	N/A
T	51049	1	6/21/19	WARD	LUXE OPERATING LLC	20,000	1,193	4,772-8,006	C	42-475-00000	New	N/A
U	51104	5	6/27/19	LOVING	MESQUITE SWD INC	30,000	2,500	5,000-7,800	C	42-301-34459	New	N/A
V	51105	6	6/27/19	LOVING	MESQUITE SWD INC	30,000	2,500	5,000-7,800	C	42-301-34460	New	N/A
W	51032	1	6/19/19	LOVING	MESQUITE SWD INC	30,000	2,500	5,000-7,800	C	42-301-34456	Amend	115120
X	51033	2	6/19/19	LOVING	MESQUITE SWD INC	30,000	2,500	5,000-7,800	C	42-301-34457	Amend	115119
Y	51034	4	6/19/19	LOVING	MESQUITE SWD INC	30,000	2,500	5,000-7,800	C	42-301-34458	Amend	115121
Z	51061	1	6/24/19	PECOS	MONGOOSE ENERGY, LLC	25,000	2,450	5,050-6,100	NC	42-371-00000	New	N/A
AA	51021	1	6/18/19	PECOS	MONGOOSE ENERGY, LLC	25,000	2,500	5,200-6,300	NC	42-371-00000	New	N/A
AB	51097	1SW	6/26/19	REEVES	PRI OPERATING, LLC	30,000	2,750	5,500-7,500	NC	42-389-00000	New	N/A
AC	51098	1SW	6/26/19	REEVES	PRI OPERATING, LLC	30,000	2,750	5,500-7,500	NC	42-389-00000	New	N/A
AD	51099	1SW	6/26/19	REEVES	PRI OPERATING, LLC	30,000	2,750	5,500-7,500	NC	42-389-00000	New	N/A
AE	51023	1SW	6/18/19	REEVES	PRI OPERATING, LLC	30,000	2,750	5,500-7,500	NC	42-389-00000	New	N/A
AF	51057	1	6/24/19	REEVES	SEGURO OIL AND GAS, LLC	30,000	2,085	4,284-6,174	C	42-389-30082	New	N/A
AG	51029	1	6/19/19	REEVES	SEGURO OIL AND GAS, LLC	30,000	2,085	4,284-6,174	C	42-389-30082	New	N/A
AH	51050	1	6/21/19	PECOS	TAB ECTOR LLC	20,000	2,415	4,830-7,358	C	42-371-00000	New	N/A
AI	51051	1	6/21/19	PECOS	TAB ECTOR LLC	20,000	2,415	4,830-7,358	C	42-371-00000	New	N/A
AJ	51089	1	6/26/19	REEVES	TEJAS PERMIAN OPERATING, LLC	25,000	2,213	4,425-6,625	C	42-389-38425	New	N/A
AK	51114	1	6/28/19	LOVING	UL WATER MIDSTREAM LLC	25,000	2,577	5,154-6,800	NC	42-301-00000	New	N/A
AL	51112	1	6/28/19	WARD	UL WATER MIDSTREAM LLC	25,000	2,515	5,030-7,188	NC	42-475-00000	New	N/A
AM	51113	1	6/28/19	WINKLER	UL WATER MIDSTREAM LLC	25,000	2,563	5,125-7,363	NC	42-495-00000	New	N/A

UIC Permit Application Monitor

Central Basin Platform & Delaware Basin

Contact: Abigail Michel – amichel@b3insight.com

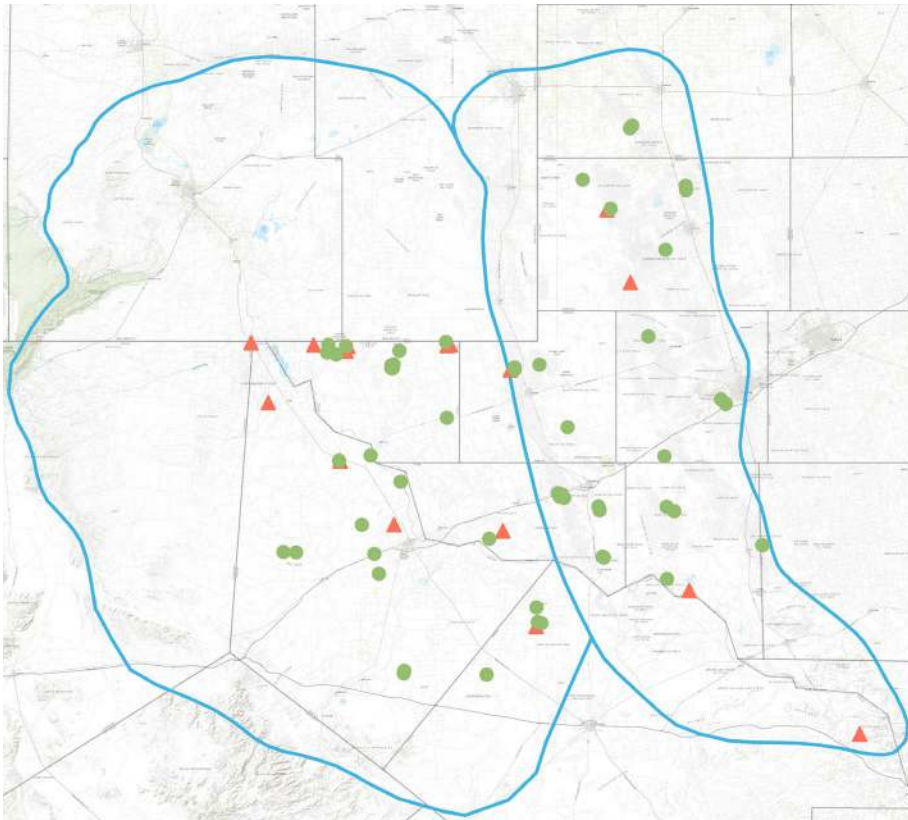
Section II. Approved Applications

Current Two Weeks: DATE

Previous Two Weeks: DATE

Time Period	Basin	Approved	New	Amendment	Commercial
Current 2 Weeks	Central Basin Platform	31	17	14	2
	Delaware Basin	26	22	4	14
	Central Basin Platform & Delaware Basin	57	39	18	16
Previous 2 Weeks	Central Basin Platform	5	2	3	0
	Delaware Basin	13	11	2	6
	Central Basin Platform & Delaware Basin	18	13	5	6
Last 60 Days	Central Basin Platform	67	35	32	3
	Delaware Basin	84	70	14	41
	Central Basin Platform & Delaware Basin	151	105	46	44
Last 180 Days	Central Basin Platform	212	123	89	11
	Delaware Basin	234	185	49	121
	Central Basin Platform & Delaware Basin	446	308	138	132

● Current Two Weeks ▲ Previous Two Weeks



County	Current Two Weeks	Previous Two Weeks
Central Basin Platform		
ANDREWS	5	2
BROOKS	0	0
CRANE	3	1
CROCKETT	0	0
ECTOR	4	0
GAINES	2	0
MIDLAND	0	0
PECOS	0	1
UPTON	3	0
WARD	10	0
WINKLER	4	1
Delaware Basin		
CULBERSON	0	1
LOVING	11	6
MIDLAND	1	0
PECOS	4	1
REEVES	9	4
REFUGIO	0	0
WARD	1	1
WINKLER	0	0

SAMPLE REPORT ONLY

UIC Permit Application Monitor

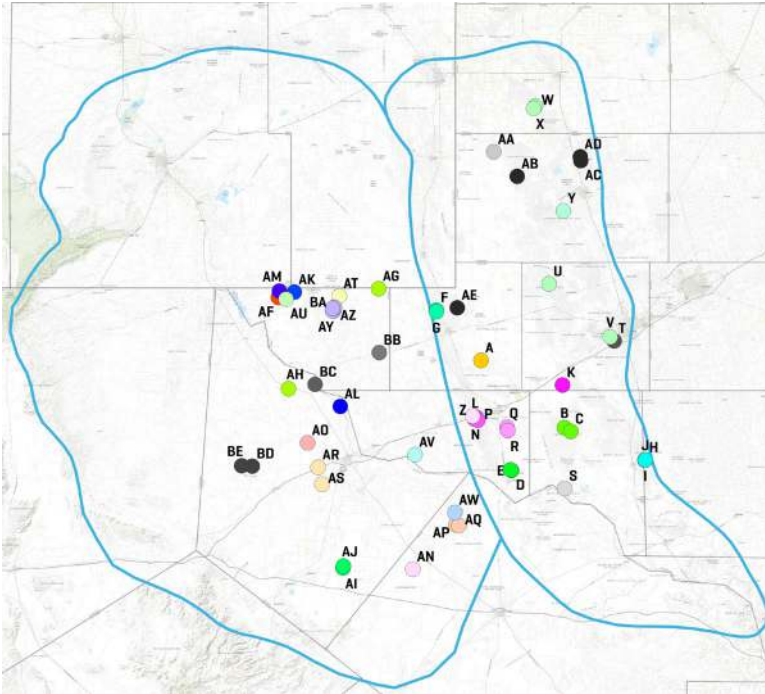
Central Basin Platform & Delaware Basin

Contact: Abigail Michel – amichel@b3insight.com

Approved Applications: Current Two Weeks by Operator

Current Two Weeks: DATE

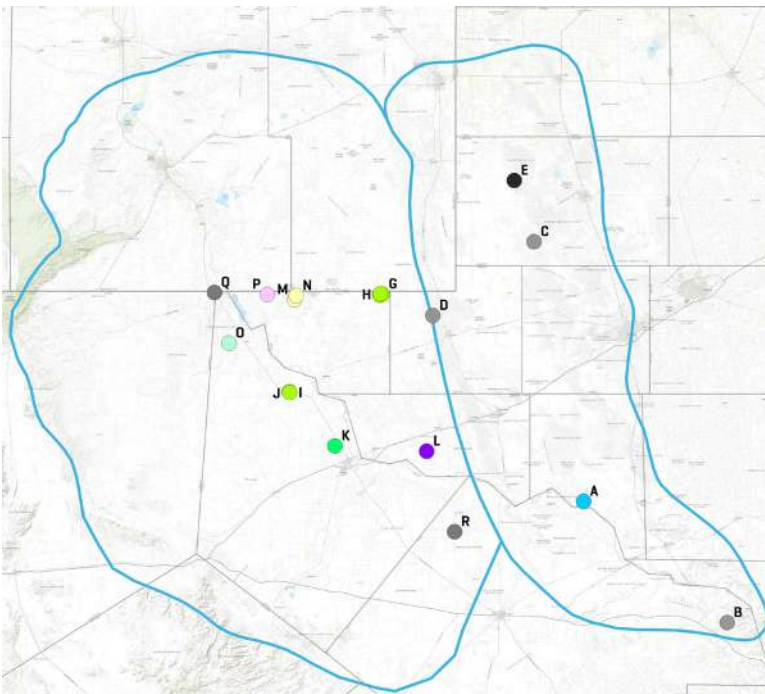
Previous Two Weeks: DATE



- APC WATER HOLDINGS 1, LLC (AF)
- BLACKBEARD OPERATING, LLC (A)
- BOYKIN ENERGY LLC (AG,AH)
- BURLINGTON RES O & G CO-MIDLAND (B,C)
- CBP OPERATING LLC (D,E)
- CENTENNIAL RESOURCE PROD, LLC (A,I,AJ)
- CHAMPION LONE STAR OPERATING,LLC (F,G)
- CHEVRON U. S. A. INC. (H,I,J)
- DACO OPERATING, LLC (AK)
- DBM WATER SERVICES, LLC (AL)
- DIAMONDBACK E&P LLC (AM)
- FOUNDERS OIL & GAS OPERATING,LLC (K)
- FOUR CORNERS PETROLEUM II, LLC (L,M,N,D,P)
- GOODNIGHT MIDSTREAM PERMIAN, LLC (Q,R)
- HALCON OPERATING CO., INC. (AN)
- INCLINE ENERGY (S)
- LAGUNA PETROLEUM CORPORATION (T)
- LUXE OPERATING LLC (AO)
- M & W HOT OIL, INC. (AP,AQ)
- MDC TEXAS OPERATOR LLC (AR,AS)
- MESQUITE SWD INC (AT)
- MUSTANG SWD OPERATING, LLC (AU)
- OCCIDENTAL PERMIAN LTD. (U,V,W,X)
- OVERFLOW ENERGY, LLC (Y)
- POINT ENERGY PARTNERS PETRO, LLC (AV)
- RANCHWATER DISPOSAL, LLC (AW)
- SEAWOLF RSWD RESOURCES, LP (AX,AY,AZ,BA)
- SUNDOWN ENERGY LP (Z)
- TEXLAND PETROLEUM, L.P. (AA)
- VELOCITY WATER SOLUTIONS, LP (BB)
- VERTICAL WATER SOLUTIONS LLC (BC)
- WATERBRIDGE TEXAS OPERATING LLC (BD,BE)
- XTO ENERGY INC. (AB,AC,AD,AE)

Reference Pages 14,15, Table 4 for approved current two-week operator details.

Approved Applications: Previous Two Weeks by Operator



- BOYKIN ENERGY LLC (F,G,H,I,J)
- CENTENNIAL RESOURCE PROD, LLC (K)
- CITATION OIL & GAS CORP. (A)
- ENWATER OPERATING, LLC (L)
- KINDER MORGAN PRODUCTION CO LLC (B)
- MESQUITE SWD INC (M,N)
- OVERFLOW ENERGY, LLC (O)
- SOLARIS WATER MIDSTREAM, LLC (P)
- UNITEX OIL & GAS, L.L.C. (C,D)
- VELOCITY WATER SOLUTIONS, LP (Q,R)
- XTO ENERGY INC (E)

Reference Page 16, Table 5 for approved previous two-week operator details.

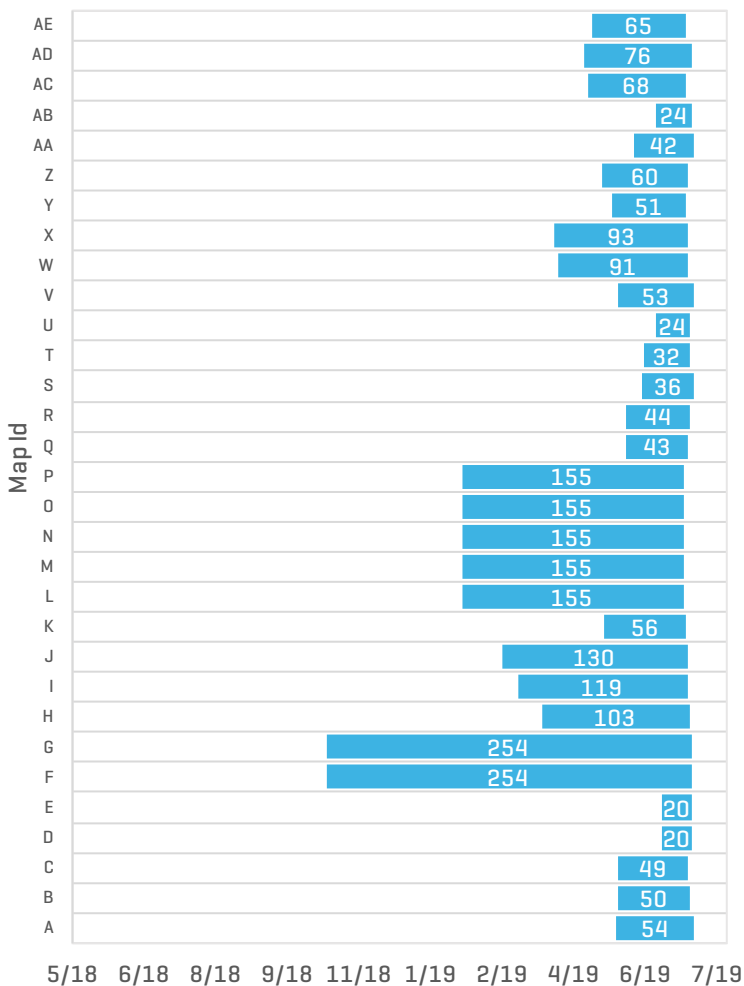
UIC Permit Application Monitor

Central Basin Platform & Delaware Basin
 Contact: Abigail Michel – amichel@b3insight.com

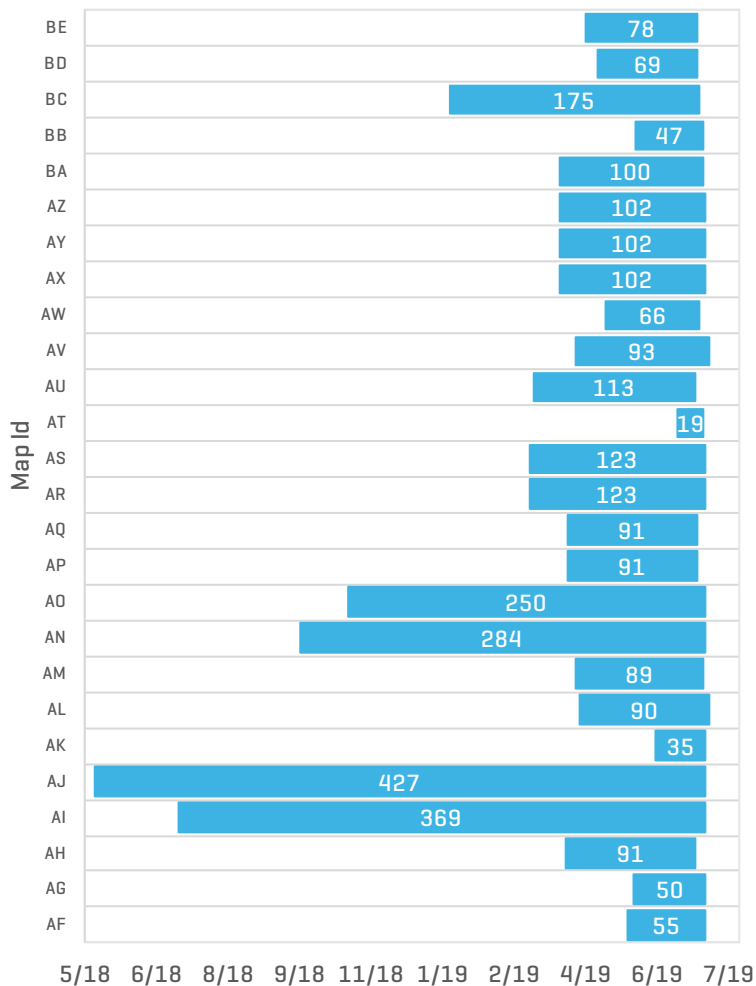
Current Two Weeks: DATE
 Previous Two Weeks: DATE

Current Two Weeks: Days Elapsed Until Approval

Central Basin Platform



Delaware Basin



Reference Pages 12, 13, Table 3 for individual well details that correspond with the letters in these charts.

UIC Permit Application Monitor

Central Basin Platform & Delaware Basin

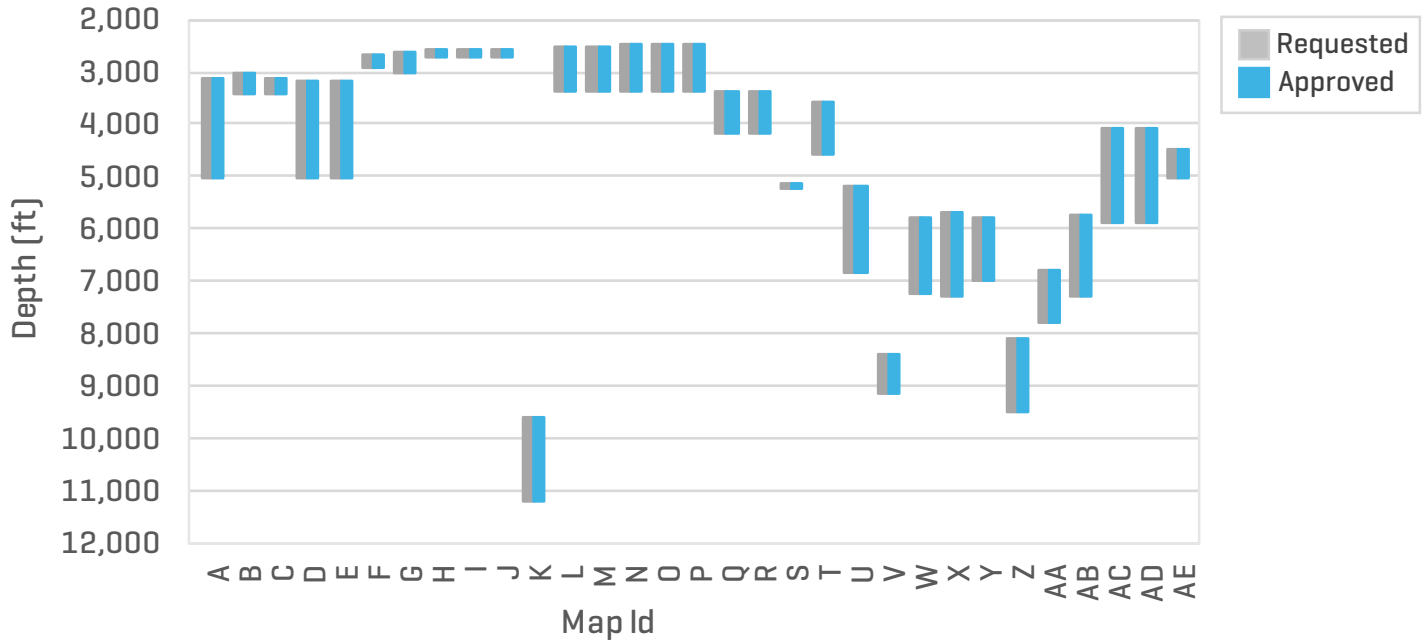
Contact: Abigail Michel - amichel@b3insight.com

Current Two Weeks: DATE

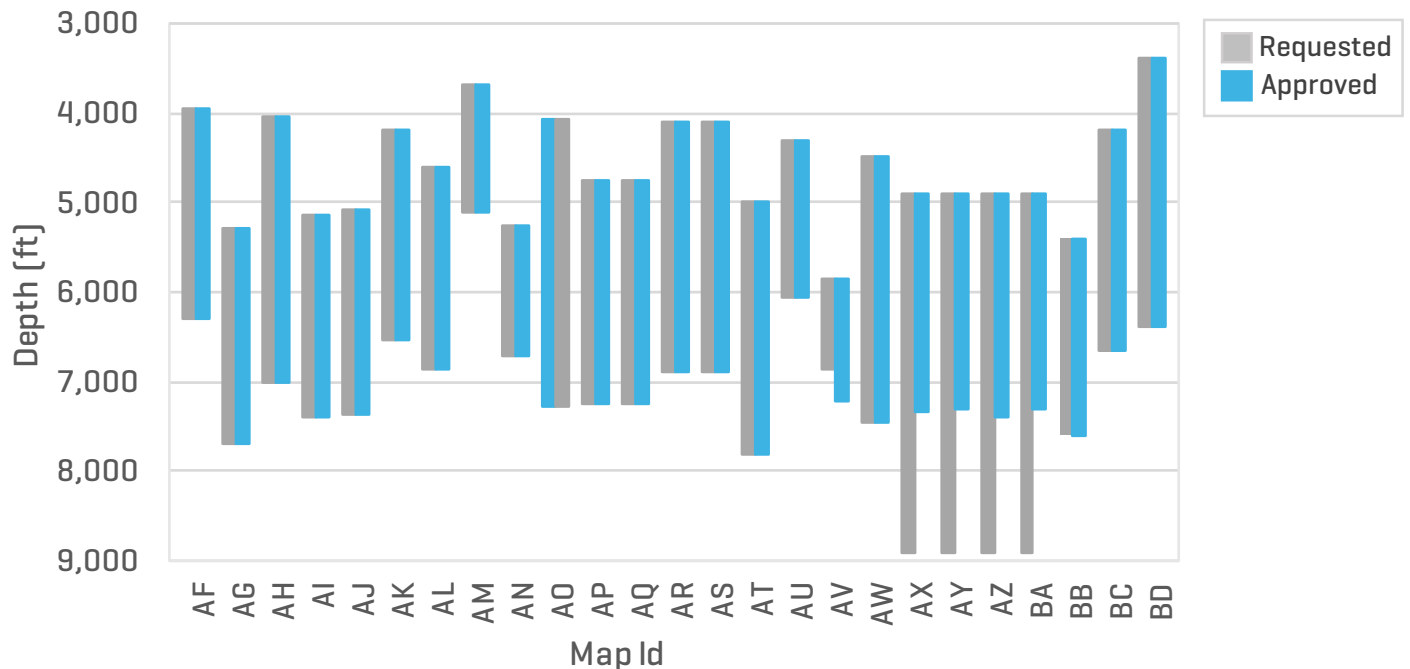
Previous Two Weeks: DATE

Current Two Weeks: Injection Intervals

Central Basin Platform



Delaware Basin



Reference Pages 12, 13, Table 3 for individual well details that correspond with the letters in these charts.

UIC Permit Application Monitor

Central Basin Platform & Delaware Basin

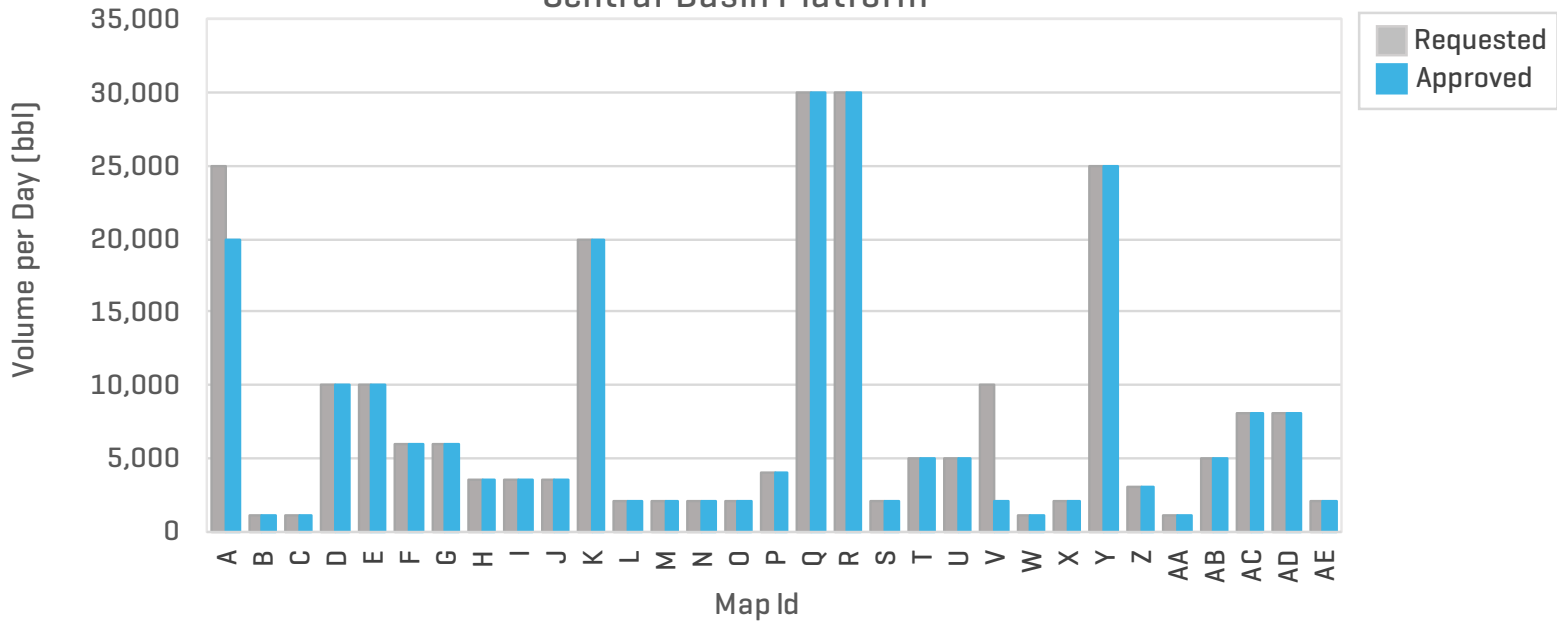
Contact: Abigail Michel – amichel@b3insight.com

Current Two Weeks: DATE

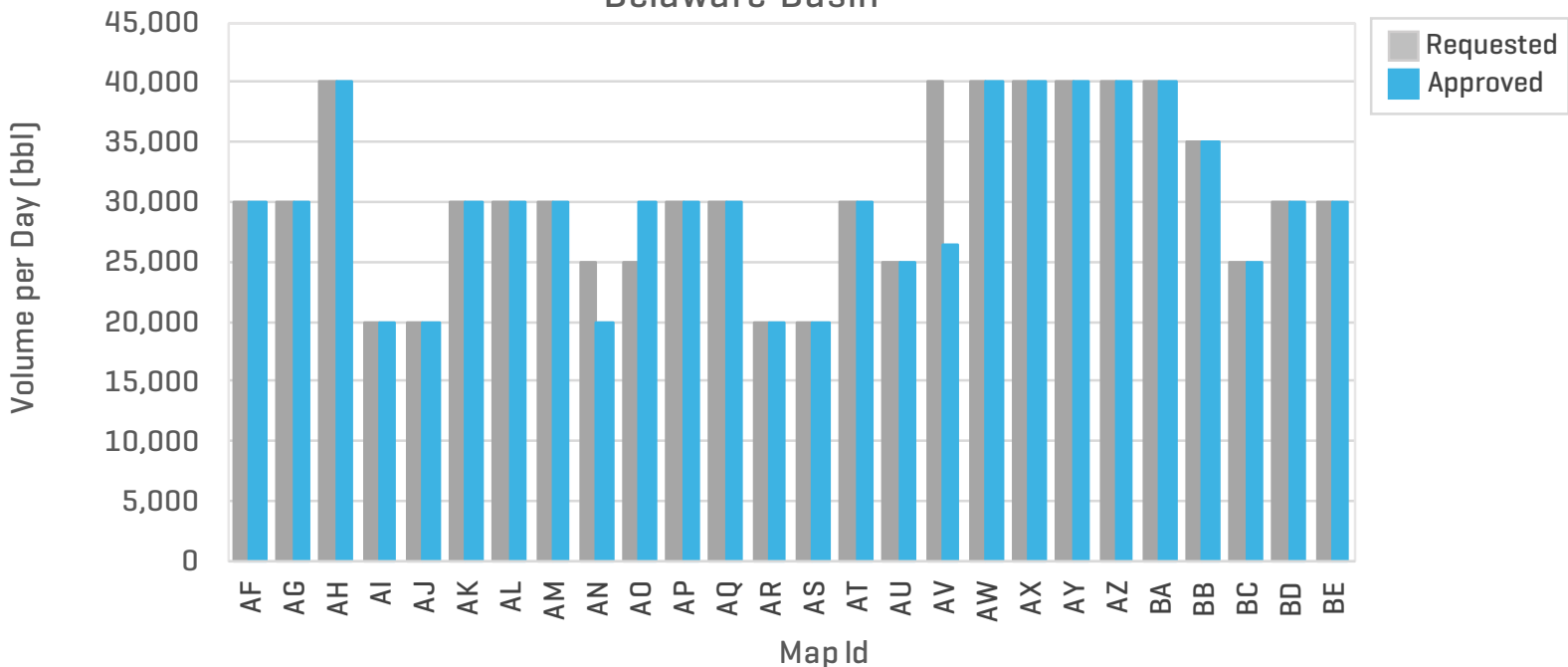
Previous Two Weeks: DATE

Current Two Weeks: Max. Liquid Injection Volume

Central Basin Platform



Delaware Basin



Reference Pages 12,13, Table 3 for individual well details that correspond with the letters in these charts.

UIC Permit Application Monitor

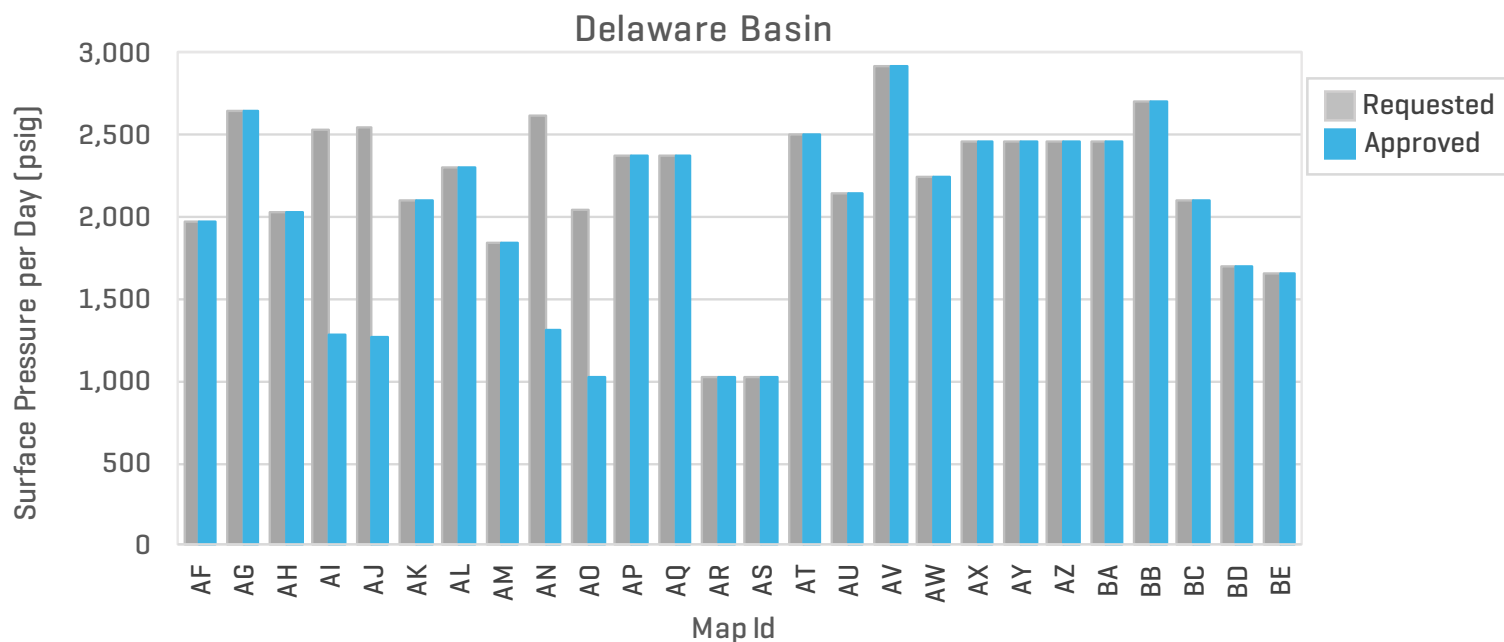
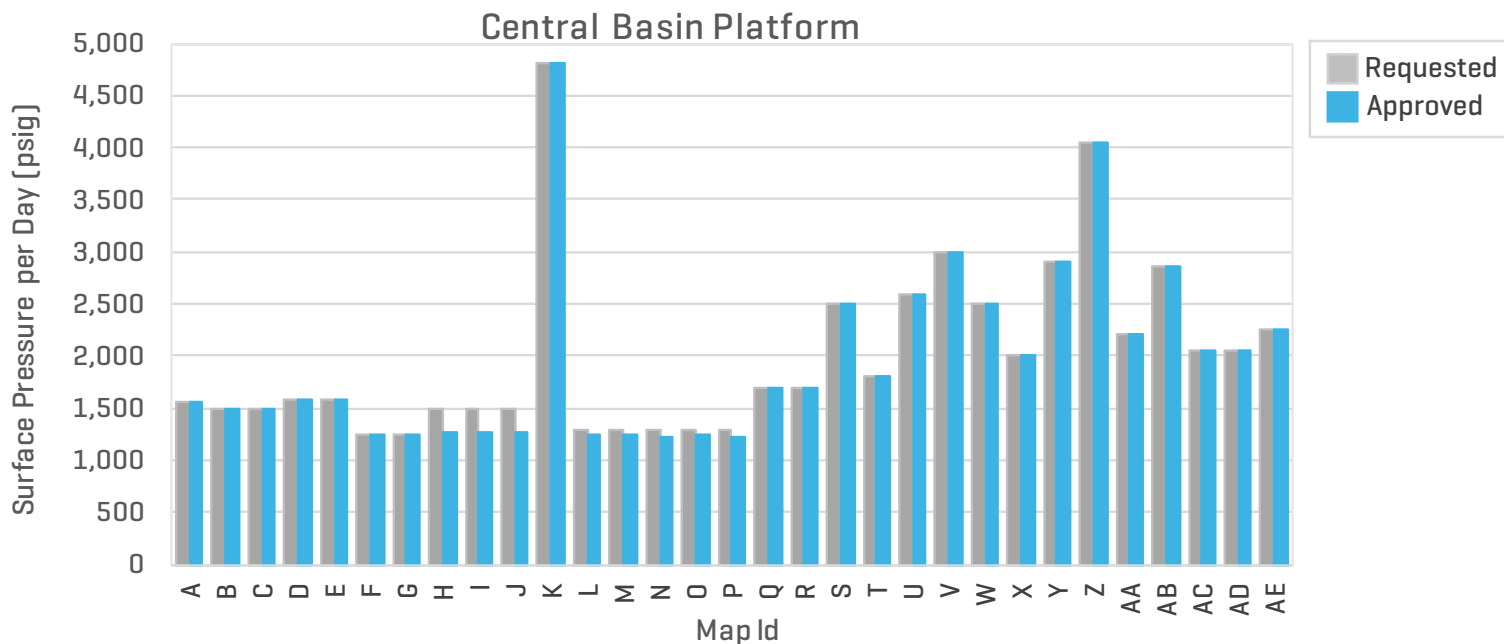
Central Basin Platform & Delaware Basin

Contact: Abigail Michel - amichel@b3insight.com

Current Two Weeks: DATE

Previous Two Weeks: DATE

Current Two Weeks: Max. Liquid Injection Pressure



Reference Pages 12,13, Table 3 for individual well details that correspond with the letters in these charts.

SAMPLE REPORT ONLY

UIC Permit Application Monitor

Central Basin Platform & Delaware Basin

Contact: Abigail Michel – amichel@b3insight.com

Table 3: Approved Permit Applications - Current Two Weeks by Operator

Current Two Weeks: DATE

Previous Two Weeks: DATE

Map Id	Operator	Tracking #	Well #	Reported Formation(s)
Central Basin Platform				
A	BLACKBEARD OPERATING, LLC	50831	201SD	QUEEN / SAN ANDRES
B	BURLINGTON RES O & G CO-MIDLAND	50833	335W	MCKNIGHT / SAN ANDRES
C	BURLINGTON RES O & G CO-MIDLAND	50835	778W	MCKNIGHT / LEONARD
D	CBP OPERATING LLC	51014	21	SAN ANDRES / GLORIETA / CLEARFORK
E	CBP OPERATING LLC	51015	20	SAN ANDRES / GLORIETA / CLEARFORK
F	CHAMPION LONE STAR OPERATING,LLC	49690	144	YATES / COLBY / QUEEN / SEVEN RIVERS
G	CHAMPION LONE STAR OPERATING,LLC	49694	240	YATES / COLBY / QUEEN / SEVEN RIVERS
H	CHEVRON U. S. A. INC.	50531	674W	GRAYBURG
I	CHEVRON U. S. A. INC.	50426	675W	GRAYBURG
J	CHEVRON U. S. A. INC.	50342	1727W	GRAYBURG
K	FOUNDERS OIL & GAS OPERATING,LLC	50783	1	ELLENBURGER
L	FOUR CORNERS PETROLEUM II, LLC	50161	1706	YATES / QUEEN
M	FOUR CORNERS PETROLEUM II, LLC	50162	1707	YATES / QUEEN
N	FOUR CORNERS PETROLEUM II, LLC	50163	1705	YATES / QUEEN
O	FOUR CORNERS PETROLEUM II, LLC	50164	1704	YATES / QUEEN
P	FOUR CORNERS PETROLEUM II, LLC	50165	92W	YATES / QUEEN
Q	GOODNIGHT MIDSTREAM PERMIAN, LLC	50877	10	SAN ANDRES
R	GOODNIGHT MIDSTREAM PERMIAN, LLC	50878	11	SAN ANDRES
S	INCLINE ENERGY	50918	1L	MONTOYA
T	LAGUNA PETROLEUM CORPORATION	50929	19	QUEEN / GRAYBURG / SAN ANDRES
U	OCCIDENTAL PERMIAN LTD.	50980	653	CLEAR FORK / WICHITA ALBANY
V	OCCIDENTAL PERMIAN LTD.	50849	166W	WICHITA ALBANY / WOLFCAMP / CISCO
W	OCCIDENTAL PERMIAN LTD.	50589	1202W	GLORIETA / CLEAR FORK
X	OCCIDENTAL PERMIAN LTD.	50585	1339	GLORIETA / CLEARFORK
Y	OVERFLOW ENERGY, LLC	50808	1	GLORIETA / CLEARFORK / TUBB
Z	SUNDOWN ENERGY LP	50776	4006W	PENNSYLVANIAN
AA	TEXLAND PETROLEUM, L.P.	50886	3	CLEARFORK
AB	XTO ENERGY INC.	50990	3014	CLEARFORK
AC	XTO ENERGY INC.	50738	1802	GRAYBURG / SAN ANDRES
AD	XTO ENERGY INC.	50718	1554	GRAYBURG / SAN ANDRES
AE	XTO ENERGY INC.	50744	602W	HOLT

SAMPLE REPORT ONLY

UIC Permit Application Monitor

Central Basin Platform & Delaware Basin

Contact: Abigail Michel – amichel@b3insight.com

Table 3: Approved Permit Applications - Current Two Weeks by Operator [cont.]

Current Two Weeks: DATE

Previous Two Weeks: DATE

AF	APC WATER HOLDINGS 1, LLC	50823	1D	DELAWARE MOUNTAIN GROUP
AG	BOYKIN ENERGY LLC	50854	4	DELAWARE MOUNTAIN GROUP
AH	BOYKIN ENERGY LLC	50562	3	DELAWARE MOUNTAIN GROUP
AI	CENTENNIAL RESOURCE PROD, LLC	48969	2	DELAWARE MOUNTAIN GROUP
AJ	CENTENNIAL RESOURCE PROD, LLC	48594	1	DELAWARE MOUNTAIN GROUP
AK	DACO OPERATING, LLC	50930	3	BELL CANYON / CHERRY CANYON
AL	DBM WATER SERVICES, LLC	50661	1D	DELAWARE MOUNTAIN GROUP
AM	DIAMONDBACK E&P LLC	50626	5D	SAN ANDRES
AN	HALCON OPERATING CO., INC.	49519	2	DELAWARE MOUNTAIN GROUP
AO	LUXE OPERATING LLC	49739	1	DELAWARE MOUNTAIN GROUP
AP	M & W HOT OIL, INC.	50583	1	DELAWARE MOUNTAIN GROUP
AQ	M & W HOT OIL, INC.	50584	2	DELAWARE MOUNTAIN GROUP
AR	MDC TEXAS OPERATOR LLC	50388	1	DELAWARE MOUNTAIN GROUP
AS	MDC TEXAS OPERATOR LLC	50392	1	DELAWARE MOUNTAIN GROUP
AT	MESQUITE SWD INC	51033	2	BELL CANYON
AU	MUSTANG SWD OPERATING, LLC	50433	2	DELAWARE MOUNTAIN GROUP
AV	POINT ENERGY PARTNERS PETRO, LLC	50625	4WD	CHERRY CANYON
AW	RANCHWATER DISPOSAL, LLC	50751	1D	DELAWARE MOUNTAIN GROUP
AX	SEAWOLF RSWD RESOURCES, LP	50547	1	BELL CANYON / CHERRY CANYON
AY	SEAWOLF RSWD RESOURCES, LP	50548	1	BELL CANYON / CHERRY CANYON
AZ	SEAWOLF RSWD RESOURCES, LP	50549	1	BELL CANYON / CHERRY CANYON
BA	SEAWOLF RSWD RESOURCES, LP	50550	1	BELL CANYON / CHERRY CANYON
BB	VELOCITY WATER SOLUTIONS, LP	50856	1	BELL CANYON / CHERRY CANYON
BC	VERTICAL WATER SOLUTIONS LLC	50044	1	BELL CANYON / CHERRY CANYON
BD	WATERBRIDGE TEXAS OPERATING LLC	50731	1	DELAWARE MOUNTAIN GROUP
BE	WATERBRIDGE TEXAS OPERATING LLC	50687	1	DELAWARE MOUNTAIN GROUP

SAMPLE REPORT ONLY

UIC Permit Application Monitor

Central Basin Platform & Delaware Basin

Contact: Abigail Michel – amichel@b3insight.com

Table 4: Approved Applications - Current Two Weeks

Current Two Weeks: DATE

Previous Two Weeks: DATE

C or NC: C = Commercial , NC = Non-Commercial

Map Id	Tracking #	Well #	Approved Date	Stamp Date	Days Elapsed	County	Operator	Auth. Inj. [bbl]	Auth. Inj. [psig]	Inj. Interval [ft]	C or NC	API	New or Amend	UIC #
Central Basin Platform														
A	50831	201SD	7/9/19	5/16/19	54	WINKLER	BLACKBEARD OPERATING, LLC	20,000	1,565	3,130-5,050	NC	42-495-00000	New	118843
B	50833	335W	7/6/19	5/17/19	50	CRANE	BURLINGTON RES O & G CO-MIDLAND	1,000	1,500	3,000-3,450	NC	42-103-01803	Amend	19398
C	50835	778W	7/5/19	5/17/19	49	CRANE	BURLINGTON RES O & G CO-MIDLAND	1,000	1,500	3,130-3,408	NC	42-103-02225	Amend	19472
D	51014	21	7/7/19	6/17/19	20	WARD	CBP OPERATING LLC	10,000	1,575	3,150-5,050	NC	42-475-00000	New	118848
E	51015	20	7/7/19	6/17/19	20	WARD	CBP OPERATING LLC	10,000	1,575	3,150-5,050	NC	42-475-00000	New	118851
F	49690	144	7/7/19	10/26/18	254	WINKLER	CHAMPION LONE STAR OPERATING,LLC	6,000	1,250	2,650-2,933	NC	42-495-03042	New	118854
G	49694	240	7/7/19	10/26/18	254	WINKLER	CHAMPION LONE STAR OPERATING,LLC	6,000	1,250	2,600-3,000	NC	42-495-03132	New	118853
H	50531	674W	7/6/19	3/25/19	103	UPTON	CHEVRON U. S. A. INC.	3,500	1,275	2,550-2,700	NC	42-461-00000	New	118831
I	50426	675W	7/5/19	3/8/19	119	UPTON	CHEVRON U. S. A. INC.	3,500	1,275	2,550-2,700	NC	42-461-00000	New	118789
J	50342	1727W	7/5/19	2/25/19	130	UPTON	CHEVRON U. S. A. INC.	3,500	1,275	2,550-2,700	NC	42-461-00000	New	118795
K	50783	1	7/3/19	5/8/19	56	ECTOR	FOUNDERS OIL & GAS OPERATING,LLC	20,000	4,800	9,600-11,200	NC	42-135-43675	New	118820
L	50161	1706	7/2/19	1/28/19	155	WARD	FOUR CORNERS PETROLEUM II, LLC	2,000	1,250	2,500-3,400	NC	42-475-36131	Amend	107359
M	50162	1707	7/2/19	1/28/19	155	WARD	FOUR CORNERS PETROLEUM II, LLC	2,000	1,250	2,500-3,400	NC	42-475-36133	Amend	107358
N	50163	1705	7/2/19	1/28/19	155	WARD	FOUR CORNERS PETROLEUM II, LLC	2,000	1,235	2,470-3,400	NC	42-475-36130	Amend	107357
O	50164	1704	7/2/19	1/28/19	155	WARD	FOUR CORNERS PETROLEUM II, LLC	2,000	1,245	2,490-3,400	NC	42-475-36136	Amend	107356
P	50165	92W	7/2/19	1/28/19	155	WARD	FOUR CORNERS PETROLEUM II, LLC	4,000	1,225	2,450-3,400	NC	42-475-32429	Amend	107339
Q	50877	10	7/5/19	5/23/19	43	WARD	GOODNIGHT MIDSTREAM PERMIAN, LLC	30,000	1,700	3,400-4,200	C	42-475-00000	New	118805
R	50878	11	7/6/19	5/23/19	44	WARD	GOODNIGHT MIDSTREAM PERMIAN, LLC	30,000	1,700	3,400-4,200	NC	42-475-00000	New	118809
S	50918	1L	7/9/19	6/3/19	36	CRANE	INCLINE ENERGY	2,000	2,500	5,113-5,238	NC	42-301-30503	New	118842
T	50929	19	7/6/19	6/4/19	32	ECTOR	LAGUNA PETROLEUM CORPORATION	5,000	1,800	3,600-4,600	NC	42-135-38455	Amend	93248
U	50980	653	7/6/19	6/12/19	24	ECTOR	OCCIDENTAL PERMIAN LTD.	5,000	2,600	5,200-6,850	NC	42-135-42742	Amend	109279
V	50849	166W	7/9/19	5/17/19	53	ECTOR	OCCIDENTAL PERMIAN LTD.	2,000	3,000	8,387-9,163	NC	42-135-34374	Amend	51068
W	50589	1202W	7/5/19	4/5/19	91	GAINES	OCCIDENTAL PERMIAN LTD.	1,000	2,500	5,800-7,220	NC	42-165-32360	Amend	87758
X	50585	1339	7/5/19	4/3/19	93	GAINES	OCCIDENTAL PERMIAN LTD.	2,000	2,000	5,700-7,300	NC	42-165-38762	New	118798
Y	50808	1	7/3/19	5/13/19	51	ANDREWS	OVERFLOW ENERGY, LLC	25,000	2,900	5,800-7,000	C	42-003-00000	New	118814
Z	50776	4006W	7/5/19	5/6/19	60	WARD	SUNDOWN ENERGY LP	3,000	4,040	8,080-9,500	NC	42-475-37896	New	118794
AA	50886	3	7/9/19	5/28/19	42	ANDREWS	TEXLAND PETROLEUM, L.P.	1,000	2,200	6,800-7,800	NC	42-003-36522	New	109348
AB	50990	3014	7/7/19	6/13/19	24	ANDREWS	XTO ENERGY INC.	5,000	2,869	5,738-7,263	NC	42-003-06264	Amend	118796
AC	50738	1802	7/3/19	4/26/19	68	ANDREWS	XTO ENERGY INC.	8,000	2,050	4,100-5,900	NC	42-003-02260	Amend	118778
AD	50718	1554	7/8/19	4/23/19	76	ANDREWS	XTO ENERGY INC.	8,000	2,050	4,100-5,900	NC	42-003-35421	New	118833
AE	50744	602W	7/3/19	4/29/19	65	WINKLER	XTO ENERGY INC.	2,000	2,249	4,499-5,028	NC	42-495-03964	Amend	55089

SAMPLE REPORT ONLY

UIC Permit Application Monitor
 Central Basin Platform & Delaware Basin
 Contact: Abigail Michel – amichel@b3insight.com

Table 4: Approved Applications - Current Two Weeks (cont.) Current Two Weeks: DATE
 Previous Two Weeks: DATE

C or NC: C = Commercial , NC = Non-Commercial

Map Id	Tracking #	Well #	Approved Date	Stamp Date	Days Elapsed	County	Operator	Auth. Inj. (bbbl)	Auth. Inj. (psig)	Inj. Interval [ft]	C or NC	API	New or Amend	UIC #
Delaware Basin														
AF	50823	1D	7/9/19	5/15/19	55	LOVING	APC WATER HOLDINGS 1, LLC	30,000	1,970	3,940-6,290	C	42-301-34355	New	118860
AG	50854	4	7/9/19	5/20/19	50	LOVING	BOYKIN ENERGY LLC	30,000	2,650	5,300-7,700	NC	42-301-34490	New	118861
AH	50562	3	7/2/19	4/2/19	91	REEVES	BOYKIN ENERGY LLC	40,000	2,025	4,050-7,000	NC	42-389-36968	Amend	116475
AI	48969	2	7/9/19	7/5/18	369	REEVES	CENTENNIAL RESOURCE PROD, LLC	20,000	1,287	5,150-7,400	NC	42-389-00000	New	118841
AJ	48594	1	7/9/19	5/8/18	427	REEVES	CENTENNIAL RESOURCE PROD, LLC	20,000	1,272	5,090-7,370	NC	42-389-00000	New	118840
AK	50930	3	7/9/19	6/4/19	35	LOVING	DACO OPERATING, LLC	30,000	2,095	4,190-6,550	C	42-301-33338	Amend	111406
AL	50661	1D	7/11/19	4/12/19	90	REEVES	DBM WATER SERVICES, LLC	30,000	2,305	4,610-6,870	C	42-389-38126	New	118870
AM	50626	5D	7/7/19	4/9/19	89	MIDLAND	DIAMONDBACK E&P LLC	30,000	1,850	3,700-5,100	NC	42-329-00000	New	118821
AN	49519	2	7/9/19	9/28/18	284	PECOS	HALCON OPERATING CO., INC.	20,000	1,313	5,250-6,725	NC	42-371-00000	New	118858
AO	49739	1	7/9/19	11/1/18	250	REEVES	LUXE OPERATING LLC	30,000	1,019	4,074-7,288	C	42-389-00000	New	118855
AP	50583	1	7/3/19	4/3/19	91	PECOS	M & W HOT OIL, INC.	30,000	2,375	4,750-7,250	C	42-371-00000	New	118773
AQ	50584	2	7/3/19	4/3/19	91	PECOS	M & W HOT OIL, INC.	30,000	2,375	4,750-7,250	C	42-371-00000	New	118774
AR	50388	1	7/9/19	3/8/19	123	REEVES	MDC TEXAS OPERATOR LLC	20,000	1,025	4,100-6,900	NC	42-389-00000	New	118846
AS	50392	1	7/9/19	3/8/19	123	REEVES	MDC TEXAS OPERATOR LLC	20,000	1,025	4,100-6,900	NC	42-389-00000	New	118847
AT	51033	2	7/8/19	6/19/19	19	LOVING	MESQUITE SWD INC	30,000	2,500	5,000-7,800	C	42-301-00000	Amend	115119
AU	50433	2	7/2/19	3/11/19	113	LOVING	MUSTANG SWD OPERATING, LLC	25,000	2,150	4,300-6,050	C	42-301-34343	New	118777
AV	50625	4WD	7/11/19	4/9/19	93	WARD	POINT ENERGY PARTNERS PETRO, LLC	26,500	2,925	5,850-7,210	C	42-475-00830	Amend	107154
AW	50751	1D	7/5/19	4/30/19	66	PECOS	RANCHWATER DISPOSAL, LLC	40,000	2,250	4,500-7,450	C	42-371-00000	New	118864
AX	50547	1	7/9/19	3/29/19	102	LOVING	SEAWOLF RSWD RESOURCES, LP	40,000	2,455	4,910-7,325	NC	42-301-00000	New	118856
AY	50548	1	7/9/19	3/29/19	102	LOVING	SEAWOLF RSWD RESOURCES, LP	40,000	2,455	4,910-7,310	NC	42-301-00000	New	118867
AZ	50549	1	7/9/19	3/29/19	102	LOVING	SEAWOLF RSWD RESOURCES, LP	40,000	2,455	4,910-7,410	NC	42-301-00000	New	118859
BA	50550	1	7/7/19	3/29/19	100	LOVING	SEAWOLF RSWD RESOURCES, LP	40,000	2,455	4,910-7,310	NC	42-301-00000	New	118866
BB	50856	1	7/7/19	5/21/19	47	LOVING	VELOCITY WATER SOLUTIONS, LP	35,000	2,700	5,400-7,600	C	42-301-00000	New	118836
BC	50044	1	7/5/19	1/11/19	175	LOVING	VERTICAL WATER SOLUTIONS LLC	25,000	2,100	4,200-6,650	C	42-301-00000	New	118812
BD	50731	1	7/3/19	4/25/19	69	REEVES	WATERBRIDGE TEXAS OPERATING LLC	30,000	1,700	3,400-6,400	C	42-389-00000	New	118792
BE	50687	1	7/3/19	4/16/19	78	REEVES	WATERBRIDGE TEXAS OPERATING LLC	30,000	1,650	3,300-6,300	C	42-389-00000	New	118793

SAMPLE REPORT ONLY

UIC Permit Application Monitor

Central Basin Platform & Delaware Basin
 Contact: Abigail Michel – amichel@b3insight.com

Table 5: Approved Applications - Previous Two Weeks

Current Two Weeks: DATE

Previous Two Weeks: DATE

C or NC: C = Commercial , NC = Non-Commercial

Map Id	Tracking #	Well #	Approved Date	Stamp Date	Days Elapsed	County	Operator	Auth. Inj. [bbl]	Auth. Inj. [psig]	Inj. Interval [ft]	C or NC	API	New or Amend	UIC #
Central Basin Platform														
A	50290	28W	6/26/19	2/12/19	134	CRANE	CITATION OIL & GAS CORP.	1,850	2,600	5287-5470	NC	42-103-34100	Amend	76452
B	50490	67C36	6/21/19	3/18/19	95	PECOS	KINDER MORGAN PRODUCTION CO LLC	1,000	796	1592-1915	NC	42-371-35788	Amend	60968
C	50814	3	6/18/19	5/14/19	35	ANDREWS	UNITEX OIL & GAS, L.L.C.	5,000	2,116	4232-5774	NC	42-003-45646	Amend	111571
D	50234	31	6/18/19	2/7/19	131	WINKLER	UNITEX OIL & GAS, L.L.C.	1,000	1,461	2923-3143	NC	42-495-05663	New	118732
E	50770	3008	6/18/19	5/6/19	43	ANDREWS	XTO ENERGY INC	5,000	2,874	5747-7136	NC	42-003-07662	New	118723
Delaware Basin														
F	50851	1	7/1/19	5/20/19	42	LOVING	BOYKIN ENERGY LLC	30,000	2,650	5300-7700	NC	42-301-34487	New	118759
G	50852	2	7/1/19	5/20/19	42	LOVING	BOYKIN ENERGY LLC	30,000	2,650	5300-7700	NC	42-301-34488	New	118757
H	50853	3	7/1/19	5/20/19	42	LOVING	BOYKIN ENERGY LLC	30,000	2,650	5300-7700	NC	42-301-34489	New	118756
I	50563	2	7/1/19	4/2/19	90	REEVES	BOYKIN ENERGY LLC	30,000	2,025	4050-7000	NC	42-389-36967	Amend	116476
J	50564	1	7/1/19	4/2/19	90	REEVES	BOYKIN ENERGY LLC	40,000	2,025	4050-7000	NC	42-389-36962	Amend	116474
K	47967	1	6/19/19	1/10/18	525	REEVES	CENTENNIAL RESOURCE PROD, LLC	20,000	1,075	4300-6800	NC	42-389-37308	New	118728
L	48741	1	6/21/19	5/30/18	387	WARD	ENWATER OPERATING, LLC	30,000	2,525	5050-7350	C	42-475-00000	New	118745
M	49701	3	6/27/19	10/26/18	244	LOVING	MESQUITE SWD INC	30,000	2,150	4300-6900	C	42-301-00000	New	118733
N	49702	4	6/27/19	10/26/18	244	LOVING	MESQUITE SWD INC	30,000	2,150	4300-6900	C	42-301-00000	New	118753
O	50764	1	6/26/19	5/3/19	54	REEVES	OVERFLOW ENERGY, LLC	25,000	1,900	3800-6300	C	42-389-00000	New	118747
P	50652	1	6/21/19	4/10/19	72	LOVING	SOLARIS WATER MIDSTREAM, LLC	30,000	2,100	4200-5300	NC	42-301-00000	New	118735
Q	49244	1	6/19/19	8/16/18	307	CULBERSON	VELOCITY WATER SOLUTIONS, LP	35,000	1,500	3000-4571	C	42-109-00000	New	118734
R	50096	1	6/24/19	1/16/19	159	PECOS	VELOCITY WATER SOLUTIONS, LP	30,000	2,600	5200-6800	C	42-371-00000	New	118739

SAMPLE REPORT ONLY

UIC Permit Application Monitor

Central Basin Platform & Delaware Basin

Contact: Abigail Michel – amichel@b3insight.com

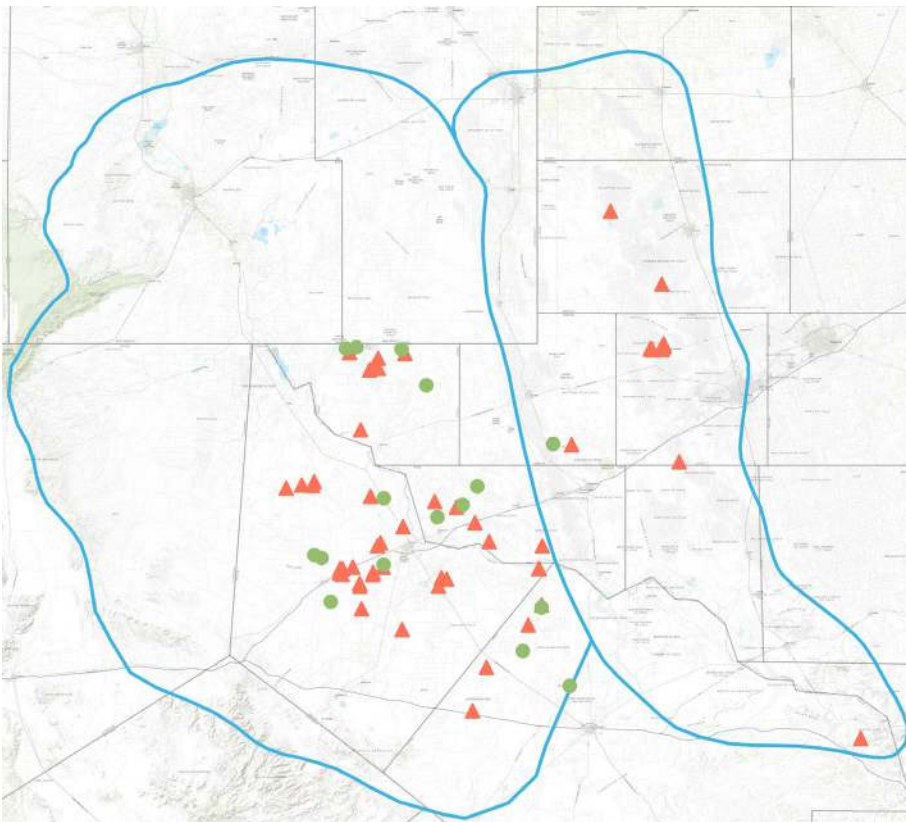
Section III. Request for Additional Data Letter [RADLTR]

Current Two Weeks: DATE

Previous Two Weeks: DATE

Time Period	Basin	RADLTRs	New w/ RADLTRs	Amendments w/ RADLTRS	Commercial w/ RADLTRs
Current 2 Weeks	Central Basin Platform	1	0	1	0
	Delaware Basin	15	13	2	8
	Central Basin Platform & Delaware Basin	16	13	3	8
Previous 2 Weeks	Central Basin Platform	13	2	11	0
	Delaware Basin	41	39	2	24
	Central Basin Platform & Delaware Basin	54	41	13	24
Last 60 Days	Central Basin Platform	52	23	29	3
	Delaware Basin	146	132	14	74
	Central Basin Platform & Delaware Basin	198	155	43	77
Last 180 Days	Central Basin Platform	188	105	83	6
	Delaware Basin	419	378	41	212
	Central Basin Platform & Delaware Basin	607	483	124	218

● Current Two Weeks ▲ Previous Two Weeks



County	Current Two Weeks	Previous Two Weeks
Central Basin Platform		
ANDREWS	0	2
BROOKS	0	0
CRANE	0	0
CROCKETT	0	0
ECTOR	0	9
GAINES	0	0
MIDLAND	0	0
PECOS	0	1
UPTON	0	0
WARD	0	0
WINKLER	1	1
Delaware Basin		
CULBERSON	0	0
LOVING	4	7
MIDLAND	0	0
PECOS	3	4
REEVES	5	25
REFUGIO	0	0
WARD	3	5
WINKLER	0	0

UIC Permit Application Monitor

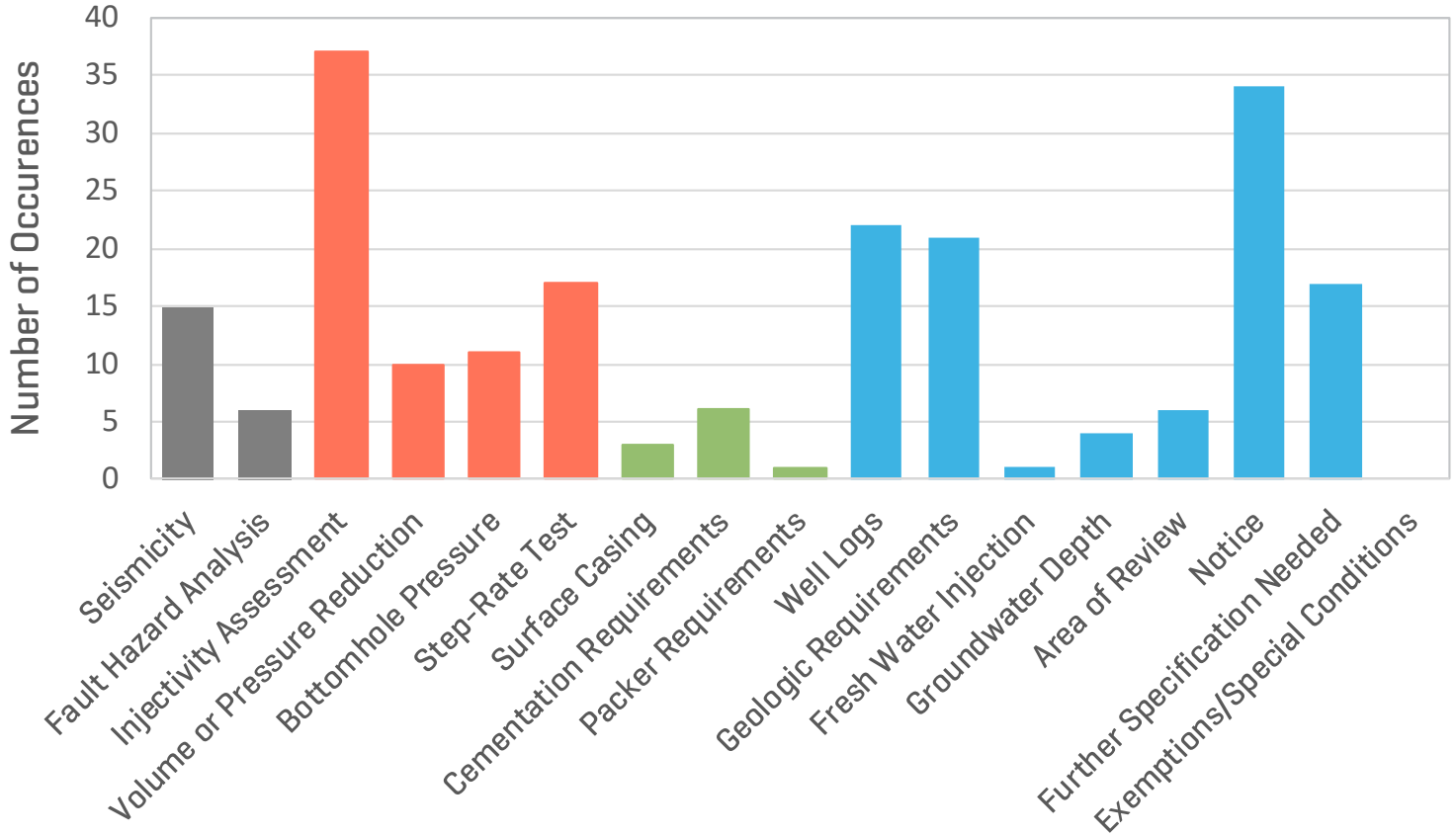
Central Basin Platform & Delaware Basin

Contact: Abigail Michel – amichel@b3insight.com

Current Two Weeks: DATE

Previous Two Weeks: DATE

RADLTR Reasons in the Last Four Weeks



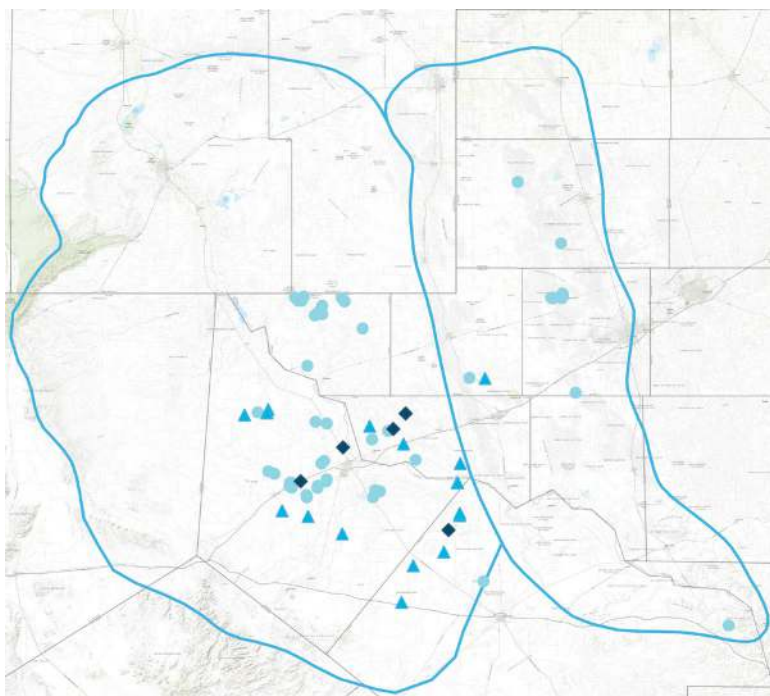
Seismicity Well Performance Well Engineering Administrative

SAMPLE REPORT ONLY

UIC Permit Application Monitor
Central Basin Platform & Delaware Basin
Contact: Abigail Michel – amichel@b3insight.com

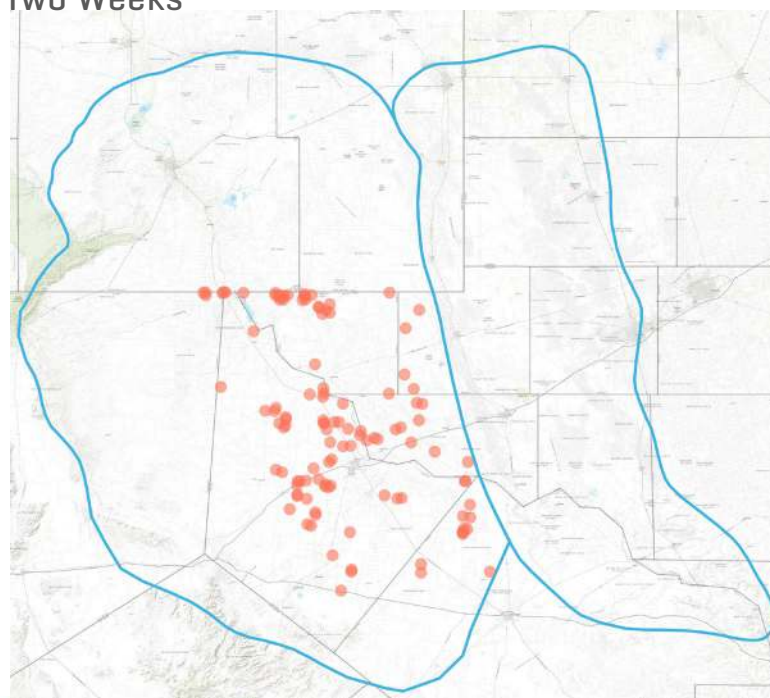
Current Two Weeks: DATE
Previous Two Weeks: DATE

Wells with RADLTR Reasons Including Seismicity, Well Performance, and Well Engineering



- 1 of 3 Reasons
- ▲ 2 of 3 Reasons
- ◆ 3 of 3 Reasons

Wells with a Protest Letter Uploaded to RRC’s Website in the Current and Previous Two Weeks



- Wells with a Protest Letter

UIC Permit Application Monitor

Central Basin Platform & Delaware Basin

Contact: Abigail Michel – amichel@b3insight.com

Methodology

The data contained in this report are extracted from a review of UIC permit applications (H-1 and W-14) submitted to the Railroad Commission of Texas (TX RRC). All data is based on what is available on the TX RRC electronic document management system and may be subject to lags and/or delays based on availability.

New permit applications are assigned to time periods specified in report based on the stamp date of the permit application. *'Previous Two Weeks'* figures may show more records than were initially reported because of delays in availability of documents from the TX RRC.

Approved permit application dates are based on the approval date provided on the actual permit. Days elapsed is defined by the days between the *stamp date* and the *approved date* on the permit. *'Reported Formation'* is based on the formation specified by applicants on the initial application.

RADLTR dates are based on the date of the most recently issued RADLTR. *'RADLTR Return Reasons'* are based on a physical review of RADLTRs sent to applicants and may contain one or more requests for additional data in a single RADLTR. The RADLTR reasons have been categorized into four main subgroups: *Seismicity, Well Performance, Well Capacity and Administrative*.

'Pending applications' are all outstanding permit applications that have a stamp date in the last 36 months and have not received an approval or have not been withdrawn or returned.

Additional information including terminology definitions and RADLTR details is available in the *UIC Permit Application Monitor Reference Guide*.

Permian Sub-Basin shapes are based on the EIA's provided boundaries.

Base maps used are "ESRI World Topo" Copyright: Kartendaten: © OpenStreetMap-Mitwirkende, SRTM | Kartendarstellung: © OpenTopoMap (CC-BY-SA).

County Shapefiles downloaded from the United States Census Bureau.

Disclaimer

B3 PROVIDES THIS REPORT AND ALL ITS CONTENT ON AN, "AS IS," AND "AS AVAILABLE", "WITH ALL FAULTS" BASIS WITHOUT WARRANTIES OF ANY KIND. TO THE MAXIMUM EXTENT PERMITTED BY LAW, B3 HEREBY DISCLAIMS ANY AND ALL WARRANTIES, WHETHER EXPRESS, ORAL, IMPLIED, STATUTORY, OR OTHERWISE, INCLUDING ANY IMPLIED WARRANTY OF FITNESS FOR A PARTICULAR PURPOSE, MERCHANTABILITY, TITLE, OR NON-INFRINGEMENT, AND ANY WARRANTIES ARISING BY VIRTUE OF CUSTOM OR USAGE OF TRADE OR COURSE OF DEALING. THE DATA AND CONTENT ARE COMPILED FROM SOURCES BEYOND B3'S CONTROL AND ERRORS, GAPS, AND INACCURACIES MAY EXIST. CUSTOMER SHALL IMPLEMENT SUFFICIENT PROCEDURES AND CHECKS TO SATISFY ITS REQUIREMENTS FOR ACCURACY AND SUITABILITY. CUSTOMER ACCEPTS ALL RISK IN ITS USE OF THIS REPORT AND ALL ITS CONTENT, INCLUDING BUT NOT LIMITED TO ANY INVESTMENT, ACQUISITION, PRODUCTION, LEGAL OR FINANCIAL DECISIONS. NO INFORMATION OBTAINED THROUGH USE OF THIS REPORT OR ANY OF ITS CONTENT CONSTITUTES LEGAL ADVICE, TRADING ADVICE, TRADING RECOMMENDATIONS, OR TRADING INFORMATION.

This report, all its content, and trademarks, copyrights, trade secrets and intellectual property rights, and other proprietary rights associated therewith are the valuable exclusive property of B3. Customer may not remove, obscure, suppress or modify in any way, any of the proprietary markings, (including any trademark, service mark, or copyright notices), and will not distribute this report or any of its content outside of Customer's organization.