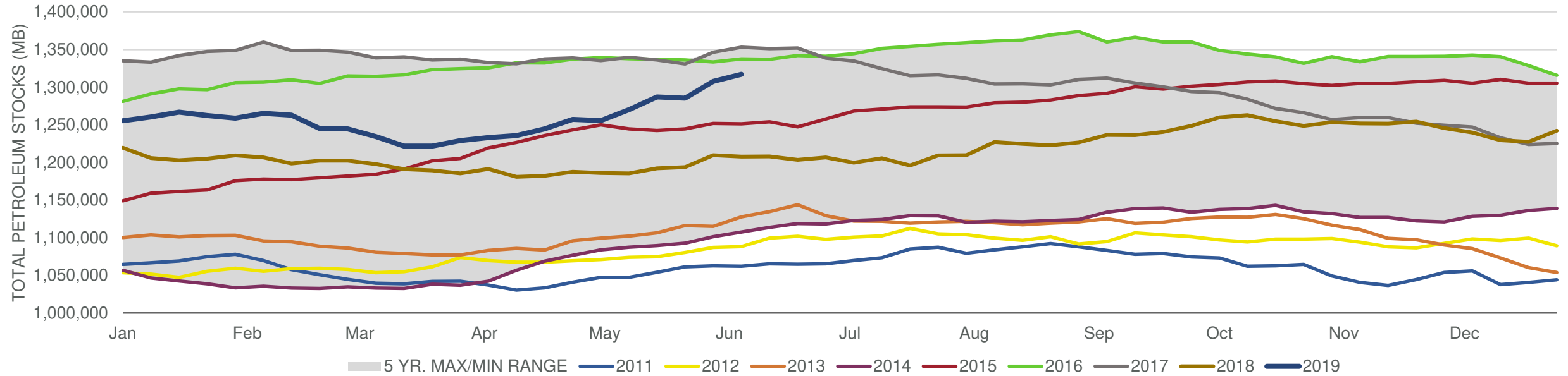


Total Stocks: **9,257 Mb** Crude Oil Stocks (excl. SPR): **2,206 Mb** Production: **-100 Mbd**

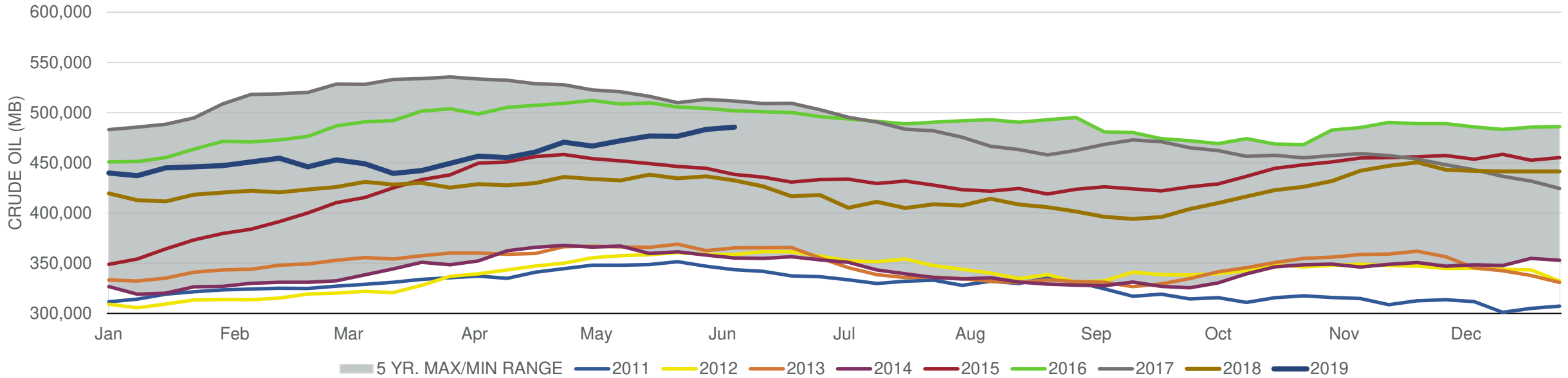
Total Petroleum Stocks



Week Ending	WTI	Change	GC Gaso	Change	NY No 2	Change	Crude	Change	Gasoline	Change	Distillate	Change	Kero	Change	Resid	Change	Total Stocks	Change
5/10/2019	\$61.88	(\$1.28)	\$1.89	(\$0.12)	\$2.03	(\$0.01)	472,035	5,431	225,024	(1,123)	125,647	84	40,220	500	29,588	1,635	1,270,263	14,642
5/17/2019	\$61.88	\$0.00	\$1.89	(\$0.00)	\$2.05	\$0.01	476,775	4,740	228,740	3,716	126,415	768	40,823	603	29,067	(521)	1,287,056	16,793
5/24/2019	\$61.60	(\$0.28)	\$1.88	(\$0.01)	\$2.03	(\$0.02)	476,493	(282)	230,944	2,204	124,800	(1,615)	38,376	(2,447)	28,301	(766)	1,285,486	(1,570)
5/31/2019	\$57.22	(\$4.37)	\$1.85	(\$0.03)	\$1.91	(\$0.11)	483,264	6,771	234,149	3,205	129,372	4,572	38,742	366	28,793	492	1,307,926	22,440
6/7/2019	\$52.97	(\$4.25)	\$1.69	(\$0.16)	\$1.78	(\$0.13)	485,470	2,206	234,913	764	128,372	(1,000)	39,163	421	29,252	459	1,317,183	9,257

Total Stocks: **9,257 Mb** Crude Oil Stocks (excl. SPR): **2,206 Mb** Production: **-100 Mbd**

**Commercial Crude Oil Stocks**



Week Ending	WTI	Change	Production	Change	Imports	Change	Exports	Change	Capacity	Inputs	Change	Utilization	Crude Oil Stocks	Change
5/10/2019	\$61.88	(\$1.28)	12,100	(100)	7,612	919	3347	1,025	18,125	16,676	271	90.5%	472,035	5,431
5/17/2019	\$61.88	\$0.00	12,200	100	6,943	(669)	2922	(425)	18,125	16,578	(98)	89.9%	476,775	4,740
5/24/2019	\$61.60	(\$0.28)	12,300	100	6,862	(81)	3317	395	18,125	16,767	189	91.2%	476,493	(282)
5/31/2019	\$57.22	(\$4.37)	12,400	100	7,927	1,065	3298	(19)	18,125	16,938	171	91.8%	483,264	6,771
6/7/2019	\$52.97	(\$4.25)	12,300	(100)	7,611	(316)	3122	(176)	18,125	17,064	126	93.2%	485,470	2,206