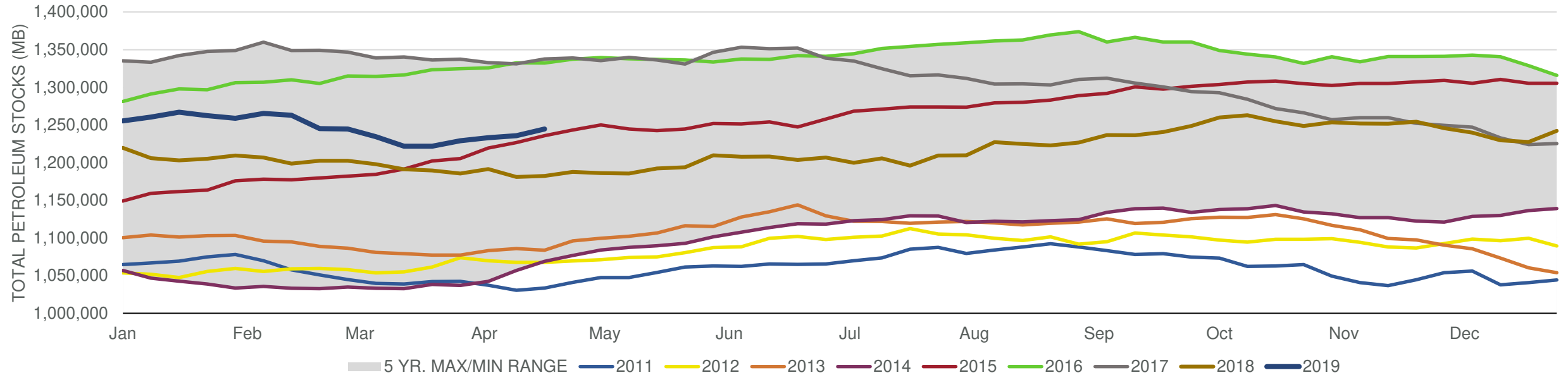


EIA Weekly Petroleum Status Report

Week Ending: 04/19/2019

Total Stocks: **8,820 Mb** Crude Oil Stocks (excl. SPR): **5,479 Mb** Production: **100 Mbd**

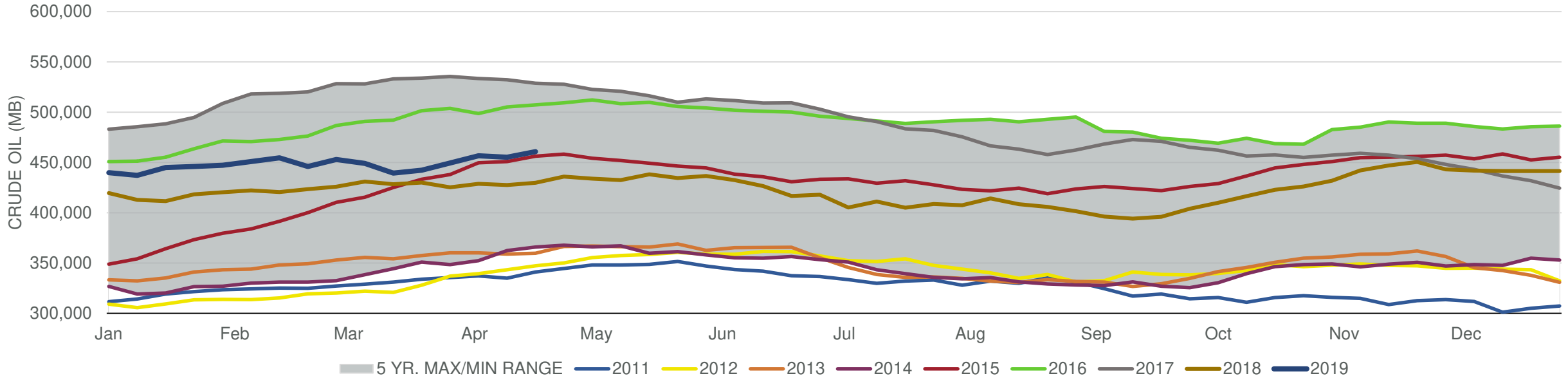
Total Petroleum Stocks



Week Ending	WTI	Change	GC Gaso	Change	NY No 2	Change	Crude	Change	Gasol	Change	Distillate	Change	Kero	Change	Resid	Change	Total Stocks	Change
3/22/2019	\$59.36	\$2.10	\$1.85	\$0.06	\$1.96	(\$0.01)	442,283	2,800	238,620	(2,883)	130,167	(2,075)	42,023	621	30,083	803	1,221,912	61
3/29/2019	\$59.23	(\$0.14)	\$1.92	\$0.07	\$1.96	(\$0.00)	449,521	7,238	236,839	(1,781)	128,169	(1,998)	40,315	(1,708)	29,405	(678)	1,229,128	7,216
4/5/2019	\$61.78	\$2.55	\$1.91	(\$0.01)	\$1.98	\$0.02	456,550	7,029	229,129	(7,710)	128,053	(116)	41,915	1,600	29,270	(135)	1,233,264	4,136
4/12/2019	\$63.95	\$2.17	\$1.98	\$0.07	\$2.03	\$0.06	455,154	(1,396)	227,955	(1,174)	127,691	(362)	42,366	451	29,076	(194)	1,235,778	2,514
4/19/2019	\$63.81	(\$0.14)	\$2.00	\$0.02	\$2.05	\$0.01	460,633	5,479	225,826	(2,129)	127,029	(662)	42,215	(151)	30,243	1,167	1,244,598	8,820

Total Stocks: **8,820 Mb** Crude Oil Stocks (excl. SPR): **5,479 Mb** Production: **100 Mbd**

Commercial Crude Oil Stocks



Week Ending	WTI	Change	Production	Change	Imports	Change	Exports	Change	Capacity	Inputs	Change	Utilization	Crude Oil Stocks	Change
3/22/2019	\$59.36	\$2.10	12,100	0	6,540	(392)	2886	(506)	18,125	15,831	(367)	86.6%	442,283	2,800
3/29/2019	\$59.23	(\$0.14)	12,200	100	6,763	223	2723	(163)	18,125	15,849	18	86.4%	449,521	7,238
4/5/2019	\$61.78	\$2.55	12,200	0	6,599	(164)	2349	(374)	18,125	16,100	251	87.5%	456,550	7,029
4/12/2019	\$63.95	\$2.17	12,100	(100)	5,992	(607)	2401	52	18,125	16,078	(22)	87.7%	455,154	(1,396)
4/19/2019	\$63.81	(\$0.14)	12,200	100	7,149	1,157	2681	280	18,125	16,583	505	90.1%	460,633	5,479