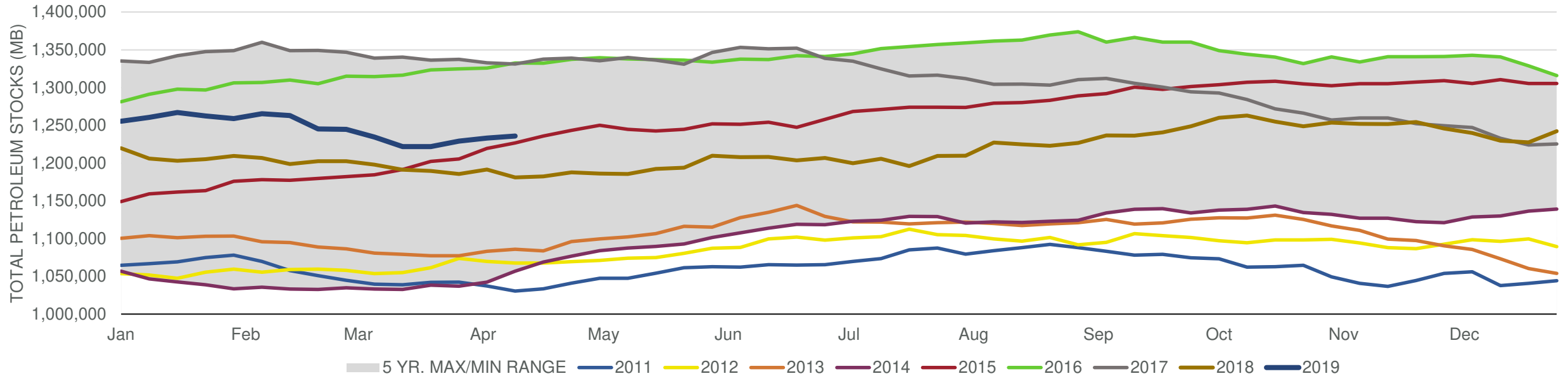


Total Stocks: **2,514 Mb** Crude Oil Stocks (excl. SPR): **-1,396 Mb** Production: **-100 Mbd**

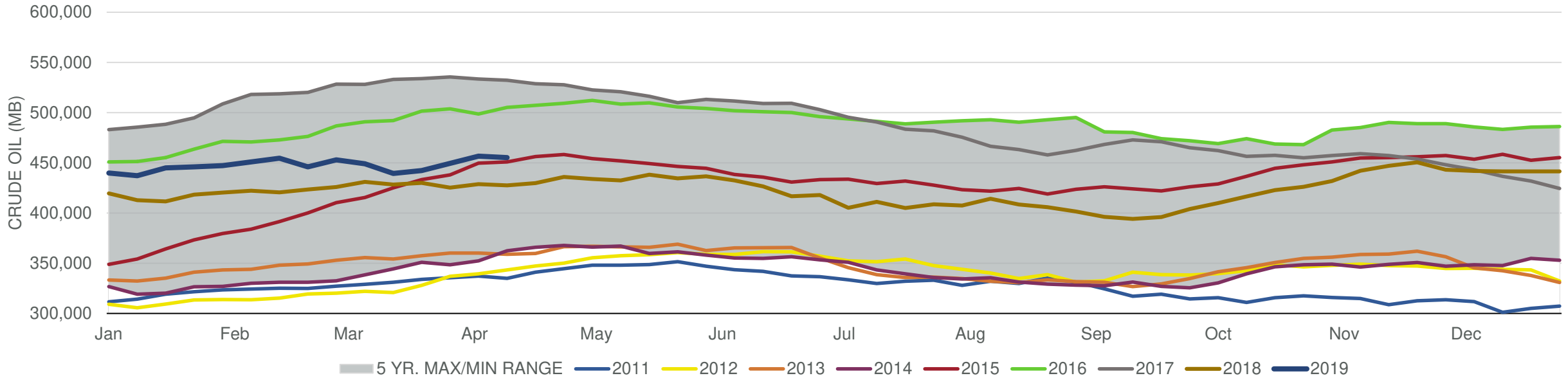
Total Petroleum Stocks



Week Ending	WTI	Change	GC Gaso	Change	NY No 2	Change	Crude	Change	Gasoline	Change	Distillate	Change	Kero	Change	Resid	Change	Total Stocks	Change
3/15/2019	\$57.81	\$1.46	\$1.81	\$0.10	\$1.96	(\$0.02)	439,483	(9,589)	241,503	(4,587)	132,242	(4,127)	41,402	314	29,280	1,690	1,221,851	(12,642)
3/22/2019	\$59.44	\$1.63	\$1.88	\$0.07	\$1.96	(\$0.01)	442,283	2,800	238,620	(2,883)	130,167	(2,075)	42,023	621	30,083	803	1,221,912	61
3/29/2019	\$59.49	\$0.05	\$1.92	\$0.04	\$1.96	(\$0.00)	449,521	7,238	236,839	(1,781)	128,169	(1,998)	40,315	(1,708)	29,405	(678)	1,229,128	7,216
4/5/2019	\$62.36	\$2.87	\$1.91	(\$0.00)	\$1.99	\$0.03	456,550	7,029	229,129	(7,710)	128,053	(116)	41,915	1,600	29,270	(135)	1,233,264	4,136
4/12/2019	\$64.10	\$1.74	\$2.00	\$0.09	\$2.04	\$0.05	455,154	(1,396)	227,955	(1,174)	127,691	(362)	42,366	451	29,076	(194)	1,235,778	2,514

Total Stocks: **2,514 Mb** Crude Oil Stocks (excl. SPR): **-1,396 Mb** Production: **-100 Mbd**

Commercial Crude Oil Stocks



Week Ending	WTI	Change	Production	Change	Imports	Change	Exports	Change	Capacity	Inputs	Change	Utilization	Crude Oil Stocks	Change
3/15/2019	\$57.81	\$1.46	12,100	100	6,932	186	3392	846	18,125	16,198	178	88.9%	439,483	(9,589)
3/22/2019	\$59.44	\$1.63	12,100	0	6,540	(392)	2886	(506)	18,125	15,831	(367)	86.6%	442,283	2,800
3/29/2019	\$59.49	\$0.05	12,200	100	6,763	223	2723	(163)	18,125	15,849	18	86.4%	449,521	7,238
4/5/2019	\$62.36	\$2.87	12,200	0	6,599	(164)	2349	(374)	18,125	16,100	251	87.5%	456,550	7,029
4/12/2019	\$64.10	\$1.74	12,100	(100)	5,992	(607)	2401	52	18,125	16,078	(22)	87.7%	455,154	(1,396)