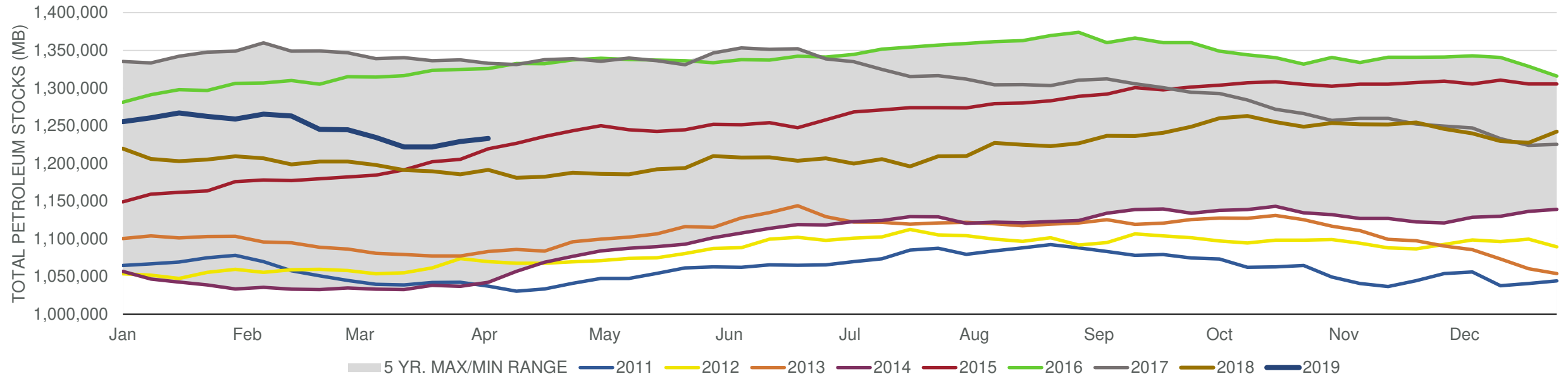


EIA Weekly Petroleum Status Report

Week Ending: 04/05/2019

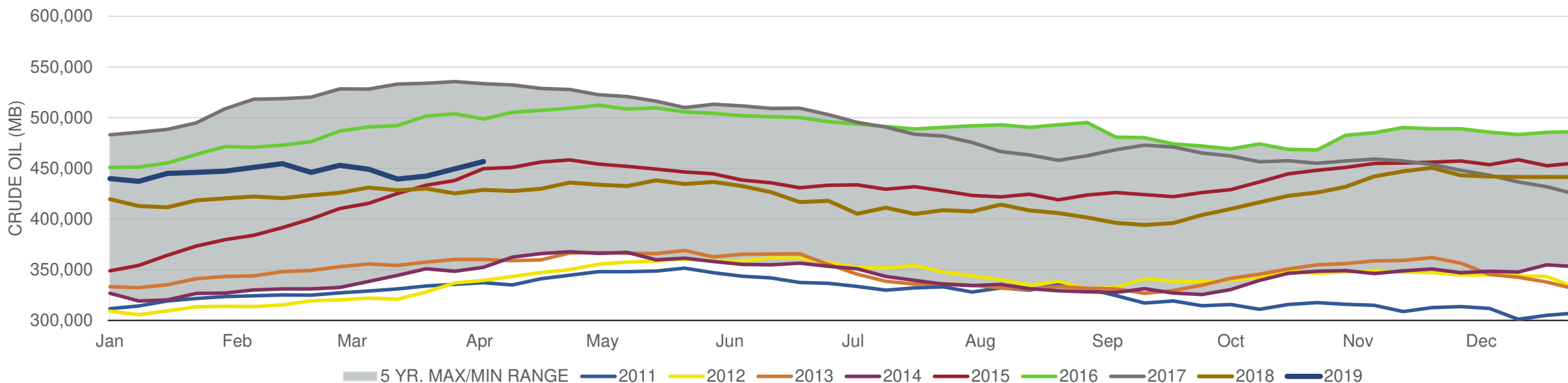
Total Stocks: **4,136 Mb** Crude Oil Stocks (excl. SPR): **7,029 Mb** Production: **0 Mbd**

Total Petroleum Stocks



Week Ending	WTI	Change	GC Gaso	Change	NY No 2	Change	Crude	Change	Gasoline	Change	Distillate	Change	Kero	Change	Resid	Change	Total Stocks	Change
3/8/2019	\$56.35	\$0.23	\$1.71	\$0.22	\$1.98	\$0.01	449,072	(3,862)	246,090	(4,624)	136,369	383	41,088	(936)	27,590	(456)	1,234,493	(10,212)
3/15/2019	\$57.81	\$1.46	\$1.81	\$0.10	\$1.96	(\$0.02)	439,483	(9,589)	241,503	(4,587)	132,242	(4,127)	41,402	314	29,280	1,690	1,221,851	(12,642)
3/22/2019	\$59.44	\$1.63	\$1.88	\$0.07	\$1.96	(\$0.01)	442,283	2,800	238,620	(2,883)	130,167	(2,075)	42,023	621	30,083	803	1,221,912	61
3/29/2019	\$59.49	\$0.05	\$1.92	\$0.05	\$1.96	(\$0.00)	449,521	7,238	236,839	(1,781)	128,169	(1,998)	40,315	(1,708)	29,405	(678)	1,229,128	7,216
4/5/2019	\$62.36	\$2.87	\$1.91	(\$0.01)	\$1.99	\$0.03	456,550	7,029	229,129	(7,710)	128,053	(116)	41,915	1,600	29,270	(135)	1,233,264	4,136

Commercial Crude Oil Stocks



Week Ending	WTI	Change	Production	Change	Imports	Change	Exports	Change	Capacity	Inputs	Change	Utilization	Crude Oil Stocks	Change
3/8/2019	\$56.35	\$0.23	12,000	(100)	6,746	(255)	2546	(257)	18,125	16,020	30	87.6%	449,072	(3,862)
3/15/2019	\$57.81	\$1.46	12,100	100	6,932	186	3392	846	18,125	16,198	178	88.9%	439,483	(9,589)
3/22/2019	\$59.44	\$1.63	12,100	0	6,540	(392)	2886	(506)	18,125	15,831	(367)	86.6%	442,283	2,800
3/29/2019	\$59.49	\$0.05	12,200	100	6,763	223	2723	(163)	18,125	15,849	18	86.4%	449,521	7,238
4/5/2019	\$62.36	\$2.87	12,200	0	6,599	(164)	2349	(374)	18,125	16,100	251	87.5%	456,550	7,029