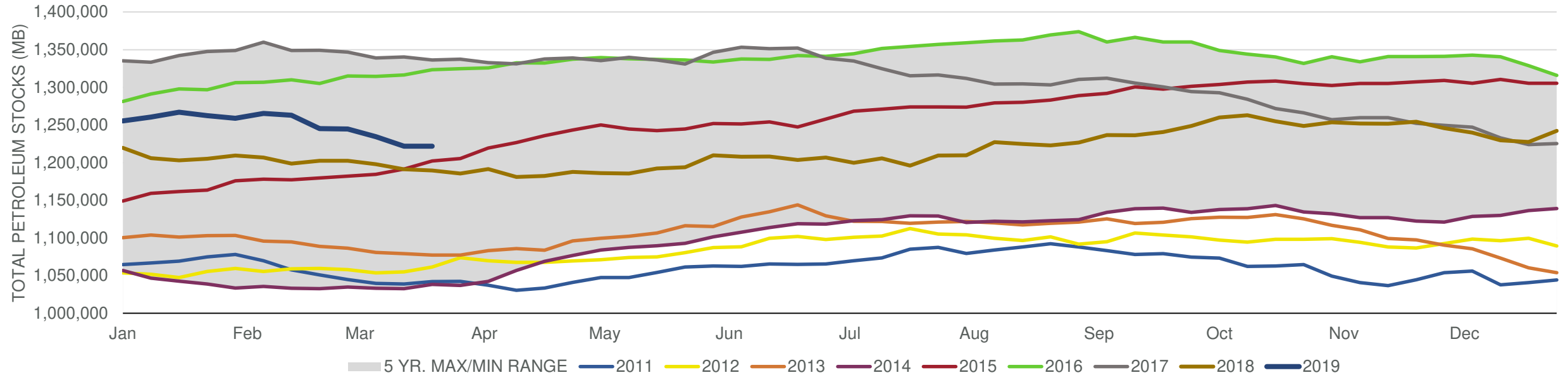


EIA Weekly Petroleum Status Report

Week Ending: 03/22/2019

Total Stocks: **61 Mb** Crude Oil Stocks (excl. SPR): **2,800 Mb** Production: **0 Mbd**

Total Petroleum Stocks



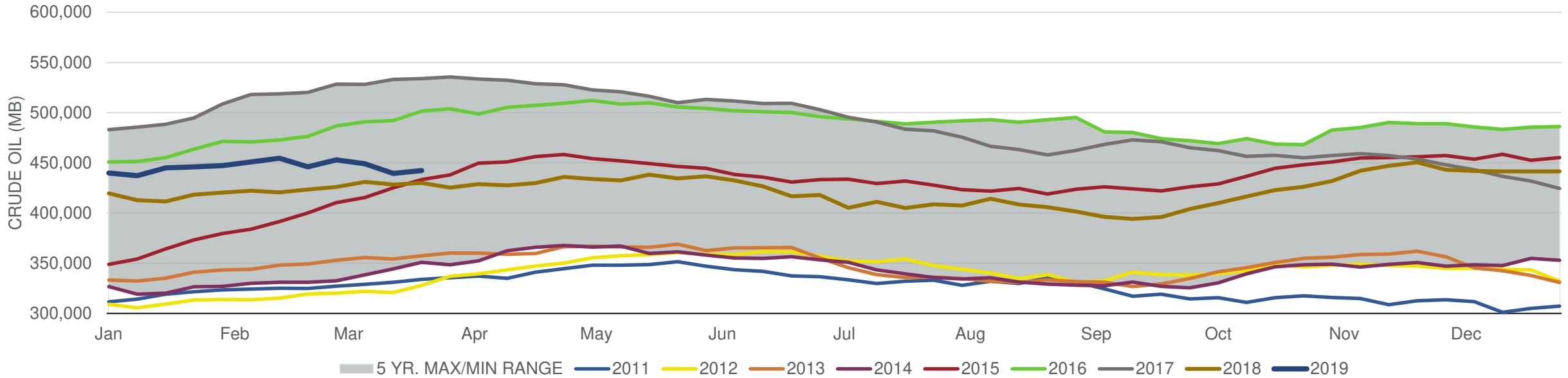
Week Ending	WTI	Change	GC Gaso	Change	NY No 2	Change	Crude	Change	Gasol	Change	Distillate	Change	Kero	Change	Resid	Change	Total Stocks	Change
2/22/2019	\$56.75	\$2.87	\$1.51	\$0.01	\$1.98	\$0.07	445,865	(8,647)	254,941	(1,906)	138,379	(304)	42,878	(487)	28,098	(1,313)	1,245,153	(17,873)
3/1/2019	\$56.12	(\$0.62)	\$1.48	(\$0.02)	\$1.97	(\$0.01)	452,934	7,069	250,714	(4,227)	135,986	(2,393)	42,024	(854)	28,046	(52)	1,244,705	(448)
3/8/2019	\$56.35	\$0.23	\$1.71	\$0.22	\$1.98	\$0.01	449,072	(3,862)	246,090	(4,624)	136,369	383	41,088	(936)	27,590	(456)	1,234,493	(10,212)
3/15/2019	\$57.81	\$1.46	\$1.80	\$0.09	\$1.96	(\$0.02)	439,483	(9,589)	241,503	(4,587)	132,242	(4,127)	41,402	314	29,280	1,690	1,221,851	(12,642)
3/22/2019	\$59.44	\$1.63	\$1.85	\$0.06	\$1.96	(\$0.01)	442,283	2,800	238,620	(2,883)	130,167	(2,075)	42,023	621	30,083	803	1,221,912	61

EIA Weekly Petroleum Status Report

Week Ending: 03/22/2019

Total Stocks: **61 Mb** Crude Oil Stocks (excl. SPR): **2,800 Mb** Production: **0 Mbd**

Commercial Crude Oil Stocks



Week Ending	WTI	Change	Production	Change	Imports	Change	Exports	Change	Capacity	Inputs	Change	Utilization	Crude Oil Stocks	Change
2/22/2019	\$56.75	\$2.87	12,100	100	5,917	(1,605)	3359	(248)	18,125	15,890	179	87.1%	445,865	(8,647)
3/1/2019	\$56.12	(\$0.62)	12,100	0	7,001	1,084	2803	(556)	18,125	15,990	100	87.5%	452,934	7,069
3/8/2019	\$56.35	\$0.23	12,000	(100)	6,746	(255)	2546	(257)	18,125	16,020	30	87.6%	449,072	(3,862)
3/15/2019	\$57.81	\$1.46	12,100	100	6,932	186	3392	846	18,125	16,198	178	88.9%	439,483	(9,589)
3/22/2019	\$59.44	\$1.63	12,100	0	6,540	(392)	2886	(506)	18,125	15,831	(367)	86.6%	442,283	2,800