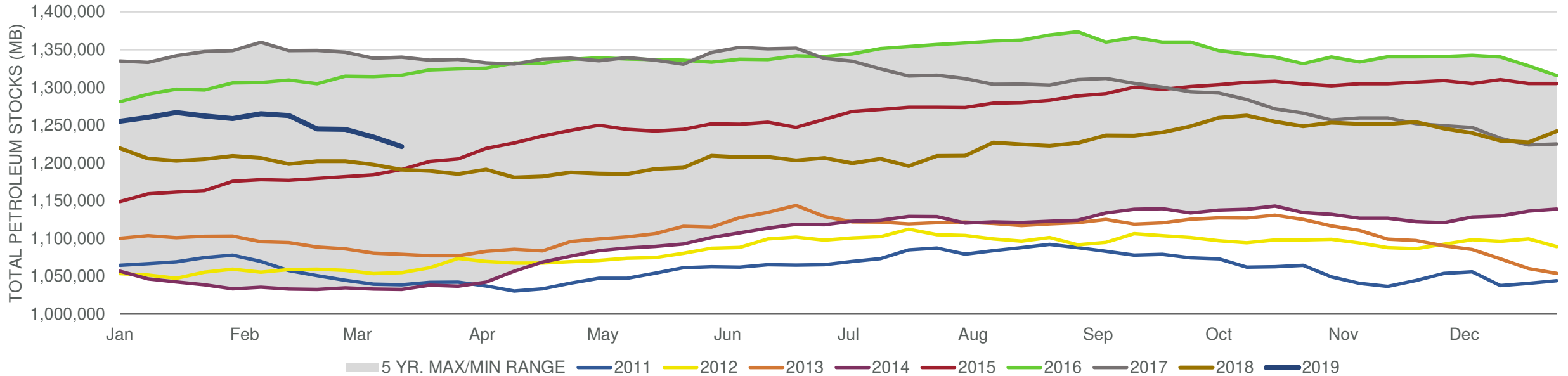


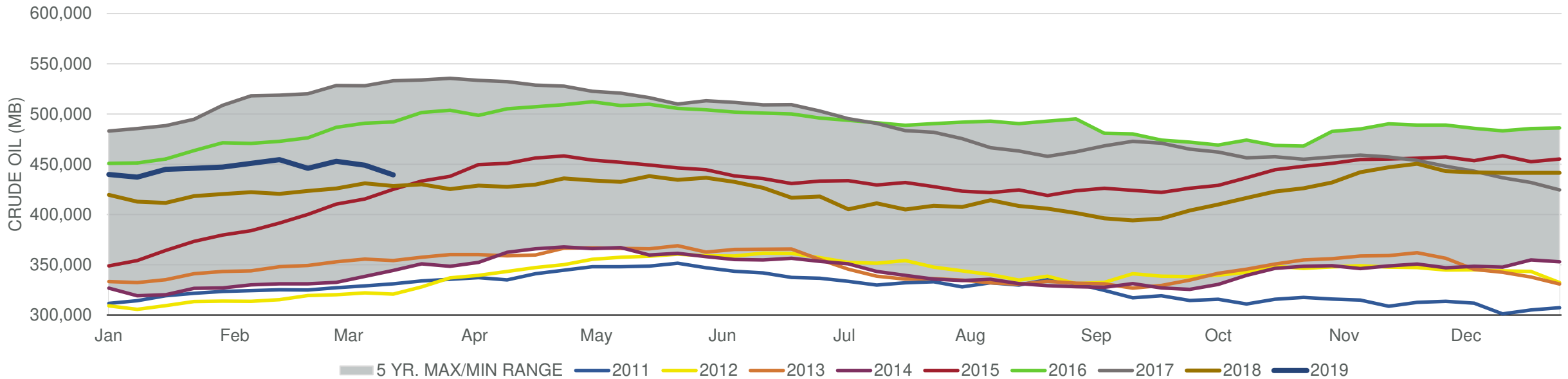
Total Stocks: **-12,642 Mb** Crude Oil Stocks (excl. SPR): **-9,589 Mb** Production: **100 Mbd**

Total Petroleum Stocks



Week Ending	WTI	Change	GC Gaso	Change	NY No 2	Change	Crude	Change	Gasoline	Change	Distillate	Change	Kero	Change	Resid	Change	Total Stocks	Change
2/15/2019	\$53.88	\$0.35	\$1.50	\$0.07	\$1.91	\$0.04	454,512	3,672	256,847	(1,454)	138,683	(1,517)	43,365	1,252	29,411	(894)	1,263,026	(2,486)
2/22/2019	\$56.75	\$2.87	\$1.51	\$0.01	\$1.98	\$0.07	445,865	(8,647)	254,941	(1,906)	138,379	(304)	42,878	(487)	28,098	(1,313)	1,245,153	(17,873)
3/1/2019	\$56.12	(\$0.62)	\$1.48	(\$0.02)	\$1.97	(\$0.01)	452,934	7,069	250,714	(4,227)	135,986	(2,393)	42,024	(854)	28,046	(52)	1,244,705	(448)
3/8/2019	\$56.35	\$0.23	\$1.68	\$0.20	\$1.98	\$0.01	449,072	(3,862)	246,090	(4,624)	136,369	383	41,088	(936)	27,590	(456)	1,234,493	(10,212)
3/15/2019	\$57.81	\$1.46	\$1.80	\$0.12	\$1.96	(\$0.02)	439,483	(9,589)	241,503	(4,587)	132,242	(4,127)	41,402	314	29,280	1,690	1,221,851	(12,642)

Commercial Crude Oil Stocks



Week Ending	WTI	Change	Production	Change	Imports	Change	Exports	Change	Capacity	Inputs	Change	Utilization	Crude Oil Stocks	Change
2/15/2019	\$53.88	\$0.35	12,000	100	7,522	1,312	3607	1,243	18,125	15,711	(57)	85.9%	454,512	3,672
2/22/2019	\$56.75	\$2.87	12,100	100	5,917	(1,605)	3359	(248)	18,125	15,890	179	87.1%	445,865	(8,647)
3/1/2019	\$56.12	(\$0.62)	12,100	0	7,001	1,084	2803	(556)	18,125	15,990	100	87.5%	452,934	7,069
3/8/2019	\$56.35	\$0.23	12,000	(100)	6,746	(255)	2546	(257)	18,125	16,020	30	87.6%	449,072	(3,862)
3/15/2019	\$57.81	\$1.46	12,100	100	6,932	186	3392	846	18,125	16,198	178	88.9%	439,483	(9,589)