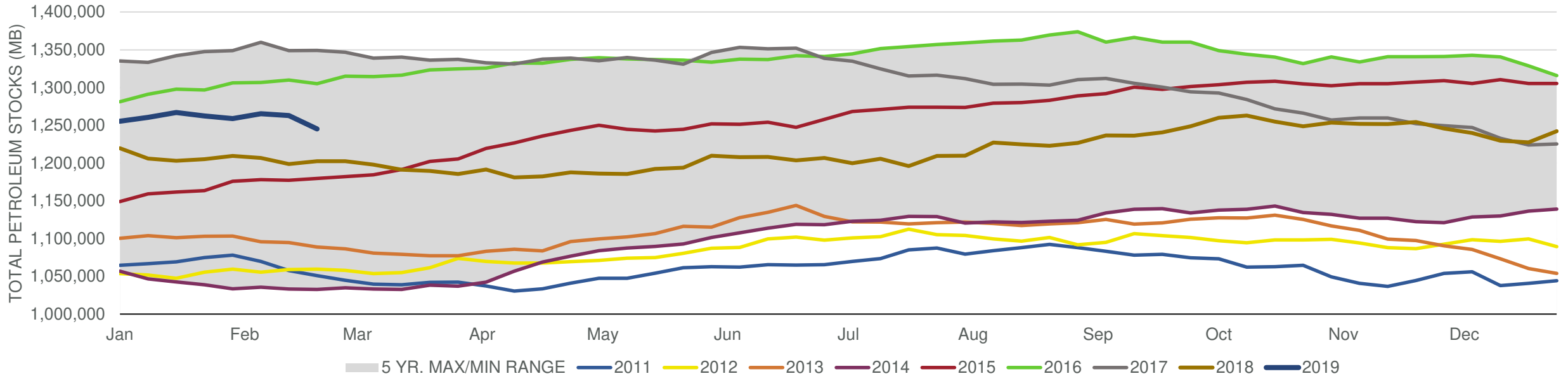


EIA Weekly Petroleum Status Report

Week Ending: 02/22/2019

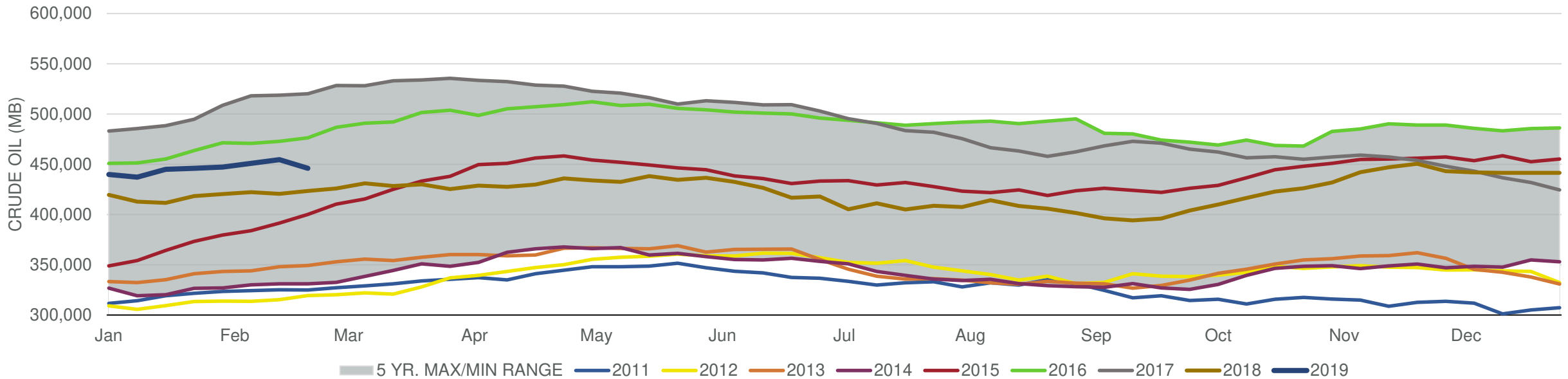
Total Stocks: **-17,873 Mbd** Crude Oil Stocks (excl. SPR): **-8,647 Mbd** Production: **100 Mbd**

Total Petroleum Stocks



Week Ending	WTI	Change	GC Gaso	Change	NY No 2	Change	Crude	Change	Gasoline	Change	Distillate	Change	Kero	Change	Resid	Change	Total Stocks	Change
1/25/2019	\$52.88	\$0.95	\$1.39	\$0.03	\$1.86	\$0.01	445,944	919	257,380	(2,235)	141,270	(1,122)	41,842	668	28,599	(870)	1,262,337	(4,773)
2/1/2019	\$53.63	\$0.76	\$1.35	(\$0.04)	\$1.85	(\$0.02)	447,207	1,263	257,893	513	139,013	(2,257)	41,549	(293)	28,796	197	1,258,980	(3,357)
2/8/2019	\$53.53	(\$0.11)	\$1.42	\$0.07	\$1.87	\$0.03	450,840	3,633	258,301	408	140,200	1,187	42,113	564	30,305	1,509	1,265,512	6,532
2/15/2019	\$53.88	\$0.35	\$1.45	\$0.02	\$1.89	\$0.02	454,512	3,672	256,847	(1,454)	138,683	(1,517)	43,365	1,252	29,411	(894)	1,263,026	(2,486)
2/22/2019	\$56.75	\$2.87	\$1.52	\$0.07	\$1.98	\$0.09	445,865	(8,647)	254,941	(1,906)	138,379	(304)	42,878	(487)	28,098	(1,313)	1,245,153	(17,873)

Commercial Crude Oil Stocks



Week Ending	WTI	Change	Production	Change	Imports	Change	Exports	Change	Capacity	Inputs	Change	Utilization	Crude Oil Stocks	Change
1/25/2019	\$52.88	\$0.95	11,900	0	7,083	(1,108)	1944	(91)	18,125	16,463	(586)	90.1%	445,944	919
2/1/2019	\$53.63	\$0.76	11,900	0	7,146	63	2870	926	18,125	16,633	170	90.7%	447,207	1,263
2/8/2019	\$53.53	(\$0.11)	11,900	0	6,210	(936)	2364	(506)	18,125	15,768	(865)	85.9%	450,840	3,633
2/15/2019	\$53.88	\$0.35	12,000	100	7,522	1,312	3607	1,243	18,125	15,711	(57)	85.9%	454,512	3,672
2/22/2019	\$56.75	\$2.87	12,100	100	5,917	(1,605)	3359	(248)	18,125	15,890	179	87.1%	445,865	(8,647)