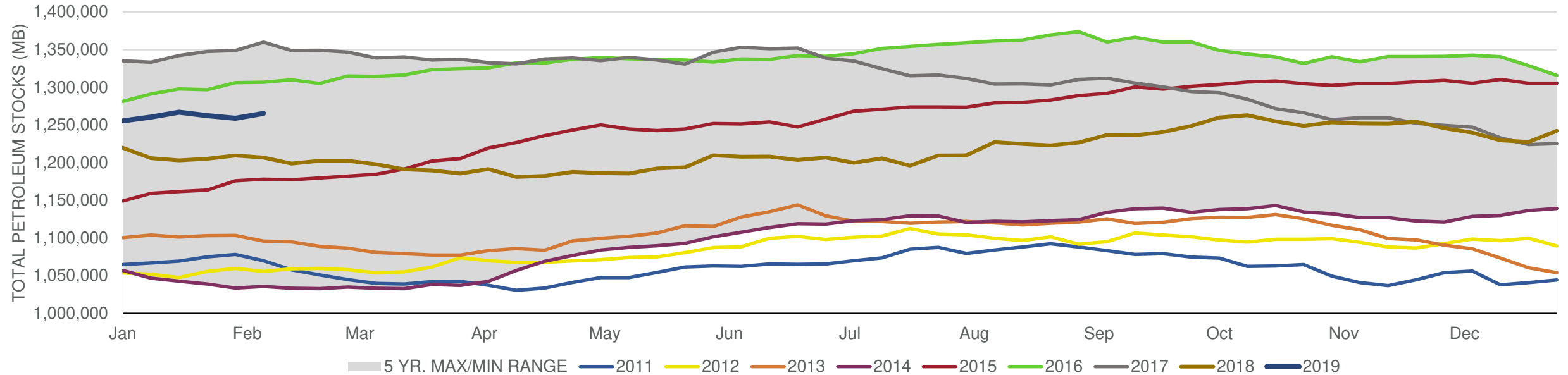


EIA Weekly Petroleum Status Report

Week Ending: 02/08/2019

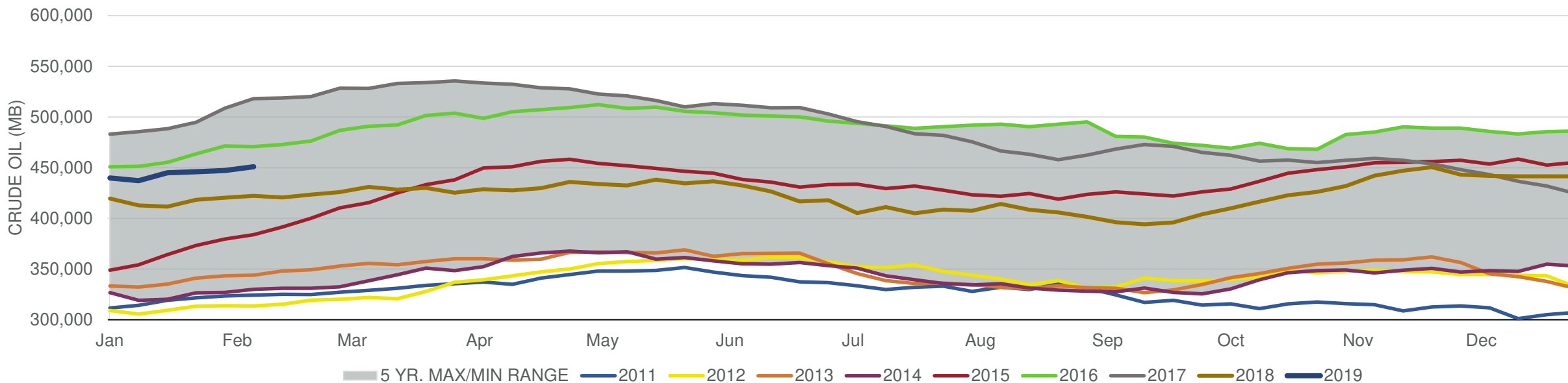
Total Stocks: **6,532 Mbd** Crude Oil Stocks (excl. SPR): **3,633 Mbd** Production: **0 Mbd**

Total Petroleum Stocks



| Week Ending | WTI | Change | GC Gaso | Change | NY No 2 | Change | Crude | Change | Gasoline | Change | Distillate | Change | Kero | Change | Resid | Change | Total Stocks | Change |
|-------------|---------|----------|---------|----------|---------|----------|---------|---------|----------|---------|------------|---------|--------|--------|--------|--------|--------------|---------|
| 1/11/2019 | \$50.78 | \$4.66 | \$1.33 | \$0.04 | \$1.80 | \$0.11 | 437,055 | (2,683) | 255,565 | 7,503 | 143,009 | 2,967 | 40,552 | 42 | 28,294 | 30 | 1,260,415 | 4,972 |
| 1/18/2019 | \$51.92 | \$1.14 | \$1.37 | \$0.04 | \$1.85 | \$0.04 | 445,025 | 7,970 | 259,615 | 4,050 | 142,392 | (617) | 41,174 | 622 | 29,469 | 1,175 | 1,267,110 | 6,695 |
| 1/25/2019 | \$52.88 | \$0.95 | \$1.39 | \$0.02 | \$1.86 | \$0.02 | 445,944 | 919 | 257,380 | (2,235) | 141,270 | (1,122) | 41,842 | 668 | 28,599 | (870) | 1,262,337 | (4,773) |
| 2/1/2019 | \$53.63 | \$0.76 | \$1.35 | (\$0.03) | \$1.85 | (\$0.01) | 447,207 | 1,263 | 257,893 | 513 | 139,013 | (2,257) | 41,549 | (293) | 28,796 | 197 | 1,258,980 | (3,357) |
| 2/8/2019 | \$53.53 | (\$0.11) | \$1.42 | \$0.07 | \$1.87 | \$0.02 | 450,840 | 3,633 | 258,301 | 408 | 140,200 | 1,187 | 42,113 | 564 | 30,305 | 1,509 | 1,265,512 | 6,532 |

Commercial Crude Oil Stocks



| Week Ending | WTI | Change | Production | Change | Imports | Change | Exports | Change | Capacity | Inputs | Change | Utilization | Crude Oil Stocks | Change |
|-------------|---------|----------|------------|--------|---------|---------|---------|--------|----------|--------|--------|-------------|------------------|---------|
| 1/11/2019 | \$50.78 | \$4.66 | 11,900 | 200 | 7,527 | (319) | 2966 | 901 | 18,125 | 17,223 | (343) | 94.6% | 437,055 | (2,683) |
| 1/18/2019 | \$51.92 | \$1.14 | 11,900 | 0 | 8,191 | 664 | 2035 | (931) | 18,125 | 17,049 | (174) | 92.9% | 445,025 | 7,970 |
| 1/25/2019 | \$52.88 | \$0.95 | 11,900 | 0 | 7,083 | (1,108) | 1944 | (91) | 18,125 | 16,463 | (586) | 90.1% | 445,944 | 919 |
| 2/1/2019 | \$53.63 | \$0.76 | 11,900 | 0 | 7,146 | 63 | 2870 | 926 | 18,125 | 16,633 | 170 | 90.7% | 447,207 | 1,263 |
| 2/8/2019 | \$53.53 | (\$0.11) | 11,900 | 0 | 6,210 | (936) | 2364 | (506) | 18,125 | 15,768 | (865) | 85.9% | 450,840 | 3,633 |