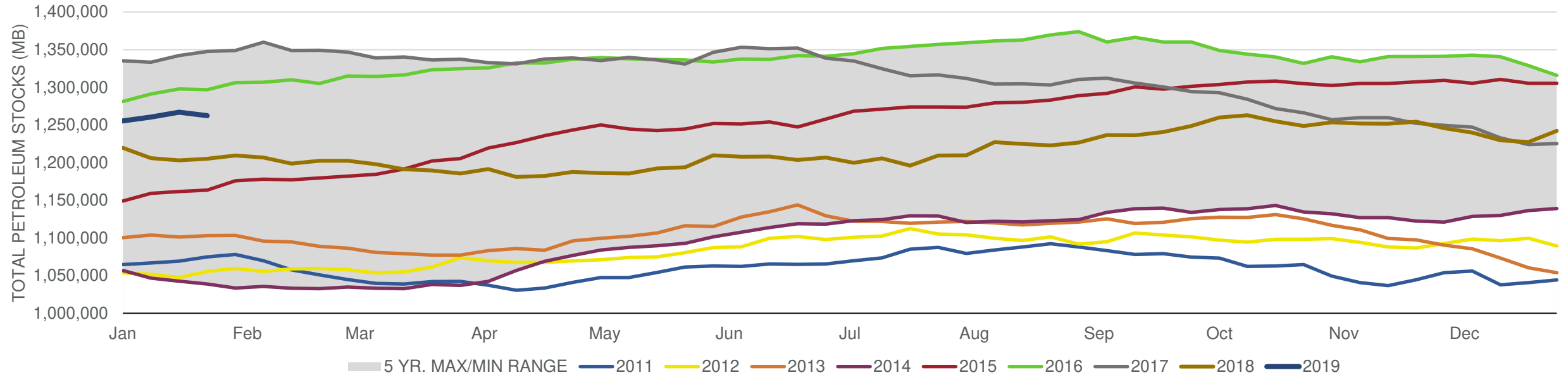


EIA Weekly Petroleum Status Report

Week Ending: 01/25/2019

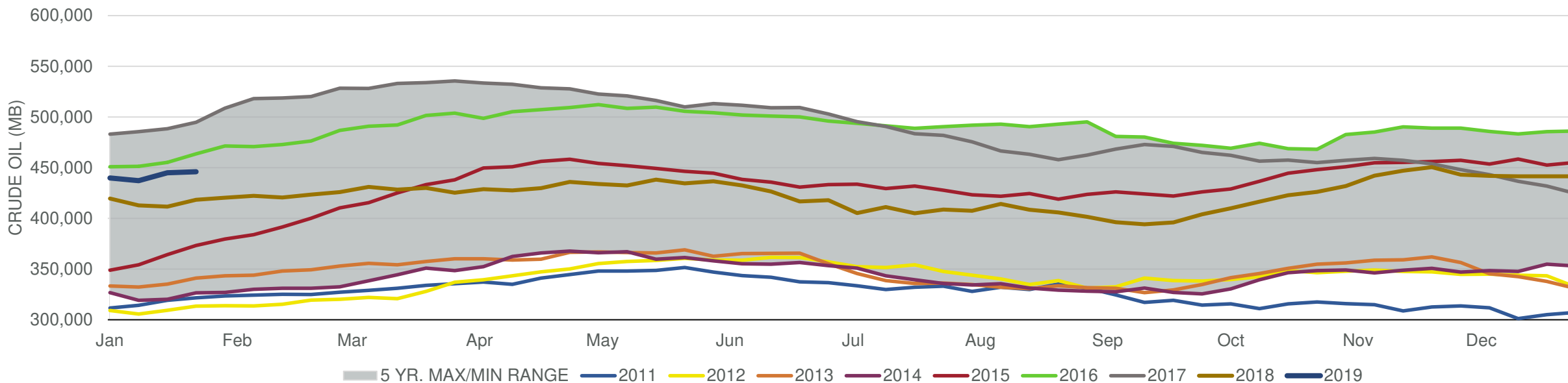
Total Stocks: **-4,773 Mbd** Crude Oil Stocks (excl. SPR): **919 Mbd** Production: **0 Mbd**

Total Petroleum Stocks



Week Ending	WTI	Change	GC Gaso	Change	NY No 2	Change	Crude	Change	Gaso	Change	Distillate	Change	Kero	Change	Resid	Change	Total Stocks	Change
12/28/2018	\$46.23	(\$5.06)	\$1.31	(\$0.10)	\$1.76	(\$0.09)	441,418	7	239,996	6,890	129,431	9,529	40,712	262	27,883	1,013	1,242,161	14,620
1/4/2019	\$46.12	(\$0.10)	\$1.29	(\$0.02)	\$1.69	(\$0.06)	439,738	(1,680)	248,062	8,066	140,042	10,611	40,510	(202)	28,264	381	1,255,443	13,282
1/11/2019	\$50.78	\$4.66	\$1.33	\$0.04	\$1.80	\$0.11	437,055	(2,683)	255,565	7,503	143,009	2,967	40,552	42	28,294	30	1,260,415	4,972
1/18/2019	\$51.92	\$1.14	\$1.36	\$0.03	\$1.85	\$0.04	445,025	7,970	259,615	4,050	142,392	(617)	41,174	622	29,469	1,175	1,267,110	6,695
1/25/2019	\$52.88	\$0.95	\$1.39	\$0.03	\$1.86	\$0.02	445,944	919	257,380	(2,235)	141,270	(1,122)	41,842	668	28,599	(870)	1,262,337	(4,773)

Commercial Crude Oil Stocks



Week Ending	WTI	Change	Production	Change	Imports	Change	Exports	Change	Capacity	Inputs	Change	Utilization	Crude Oil Stocks	Change
12/28/2018	\$46.23	(\$5.06)	11,700	0	7,392	(264)	2237	(732)	18,125	17,760	410	97.2%	441,418	7
1/4/2019	\$46.12	(\$0.10)	11,700	0	7,846	454	2065	(172)	18,125	17,566	(194)	96.1%	439,738	(1,680)
1/11/2019	\$50.78	\$4.66	11,900	200	7,527	(319)	2966	901	18,125	17,223	(343)	94.6%	437,055	(2,683)
1/18/2019	\$51.92	\$1.14	11,900	0	8,191	664	2035	(931)	18,125	17,049	(174)	92.9%	445,025	7,970
1/25/2019	\$52.88	\$0.95	11,900	0	7,083	(1,108)	1944	(91)	18,125	16,463	(586)	90.1%	445,944	919