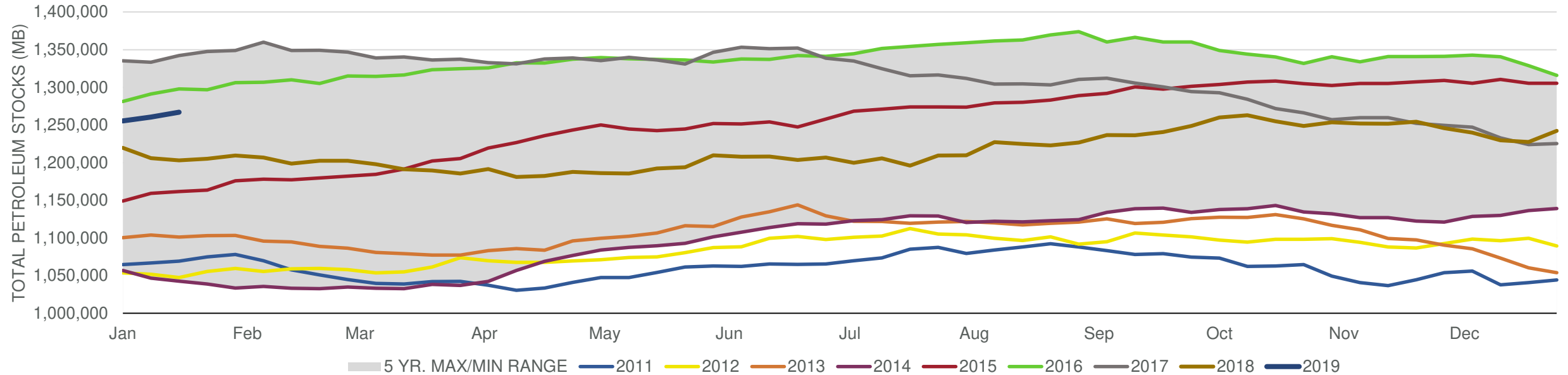


Total Stocks: **6,695 Mbd** Crude Oil Stocks (excl. SPR): **7,970 Mbd** Production: **0 Mbd**

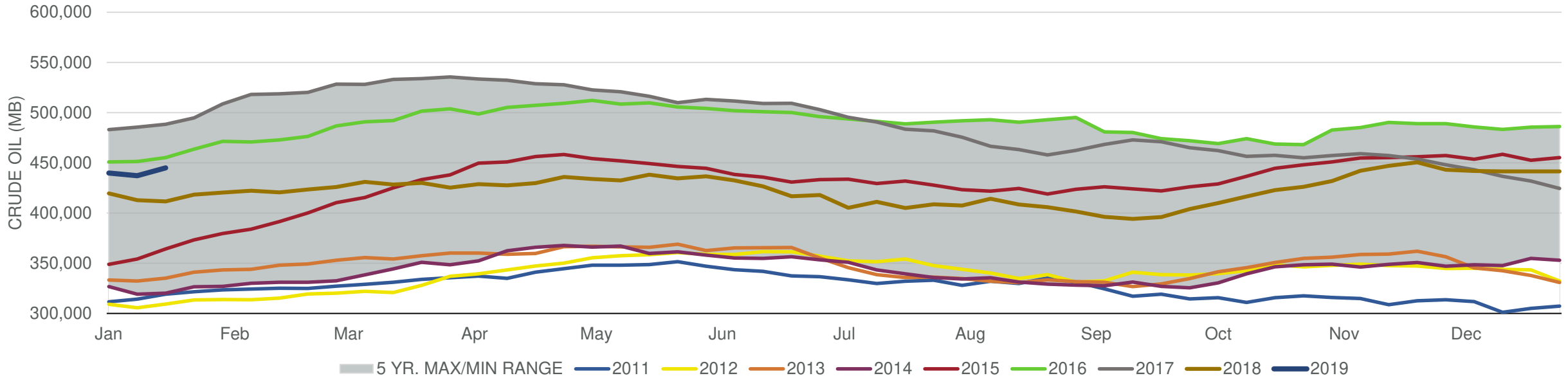
Total Petroleum Stocks



Week Ending	WTI	Change	GC Gaso	Change	NY No 2	Change	Crude	Change	Gasoline	Change	Distillate	Change	Kero	Change	Resid	Change	Total Stocks	Change
12/21/2018	\$50.18	(\$1.75)	\$1.38	(\$0.05)	\$1.82	(\$0.04)	441,411	(46)	233,106	3,003	119,902	2	40,450	627	26,870	(873)	1,227,541	(2,047)
12/28/2018	\$45.90	(\$4.28)	\$1.29	(\$0.09)	\$1.73	(\$0.08)	441,418	7	239,996	6,890	129,431	9,529	40,712	262	27,883	1,013	1,242,161	14,620
1/4/2019	\$46.88	\$0.98	\$1.30	\$0.00	\$1.71	(\$0.02)	439,738	(1,680)	248,062	8,066	140,042	10,611	40,510	(202)	28,264	381	1,255,443	13,282
1/11/2019	\$51.19	\$4.31	\$1.34	\$0.04	\$1.83	\$0.12	437,055	(2,683)	255,565	7,503	143,009	2,967	40,552	42	28,294	30	1,260,415	4,972
1/18/2019	\$52.23	\$1.04	\$1.38	\$0.04	\$1.86	\$0.02	445,025	7,970	259,615	4,050	142,392	(617)	41,174	622	29,469	1,175	1,267,110	6,695

Total Stocks: **6,695 Mbd** Crude Oil Stocks (excl. SPR): **7,970 Mbd** Production: **0 Mbd**

Commercial Crude Oil Stocks



Week Ending	WTI	Change	Production	Change	Imports	Change	Exports	Change	Capacity	Inputs	Change	Utilization	Crude Oil Stocks	Change
12/21/2018	\$50.18	(\$1.75)	11,700	100	7,656	233	2969	644	18,125	17,350	(58)	95.1%	441,411	(46)
12/28/2018	\$45.90	(\$4.28)	11,700	0	7,392	(264)	2237	(732)	18,125	17,760	410	97.2%	441,418	7
1/4/2019	\$46.88	\$0.98	11,700	0	7,846	454	2065	(172)	18,125	17,566	(194)	96.1%	439,738	(1,680)
1/11/2019	\$51.19	\$4.31	11,900	200	7,527	(319)	2966	901	18,125	17,223	(343)	94.6%	437,055	(2,683)
1/18/2019	\$52.23	\$1.04	11,900	0	8,191	664	2035	(931)	18,125	17,049	(174)	92.9%	445,025	7,970