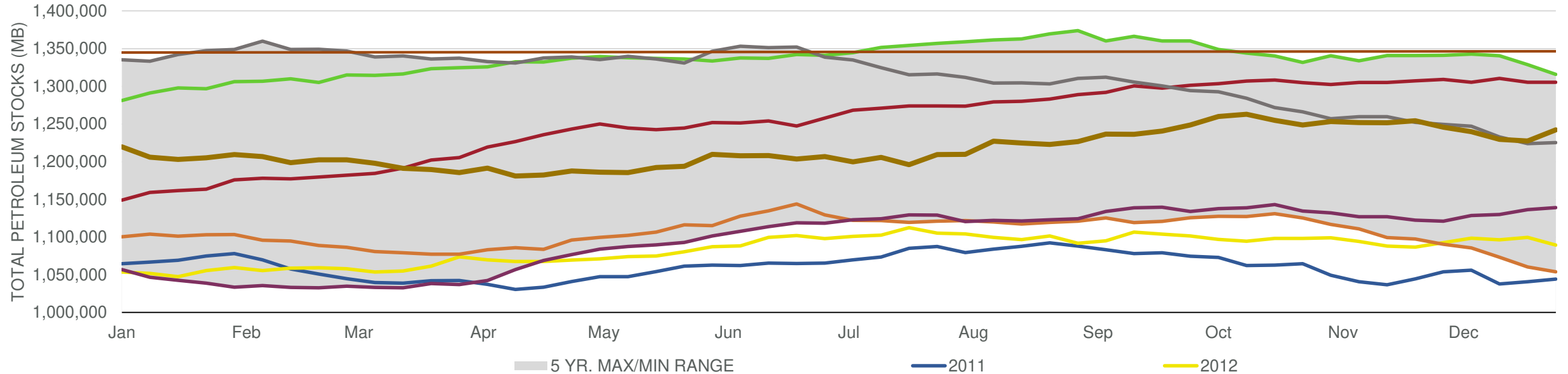


EIA Weekly Petroleum Status Report

Week Ending: 01/04/2019

Total Stocks: **13,282 Mbd** Crude Oil Stocks (excl. SPR): **-1,680 Mbd** Production: **0 Mbd**

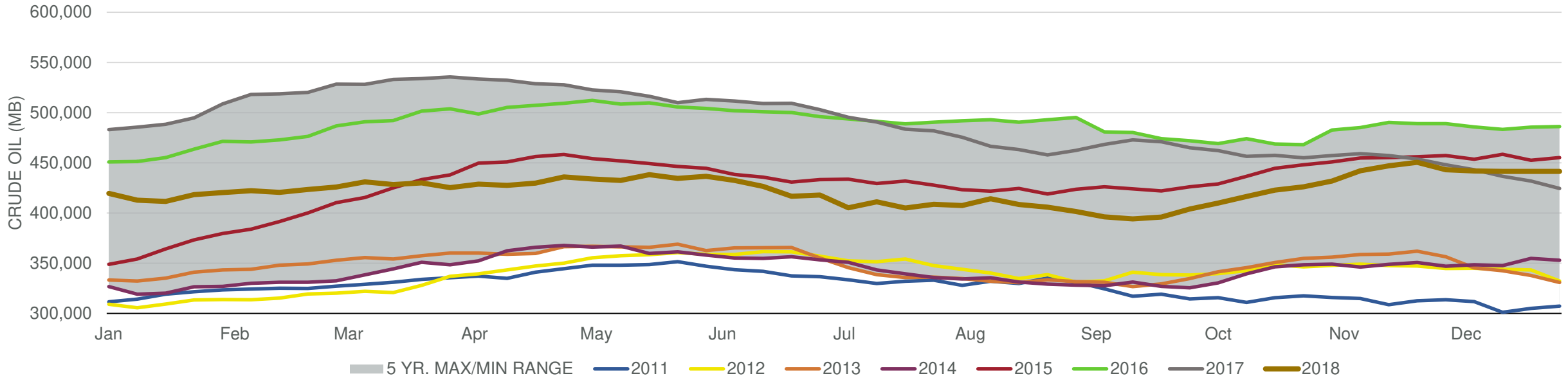
Total Petroleum Stocks



Week Ending	WTI	Change	GC Gaso	Change	NY No 2	Change	Crude	Change	Gaso	Change	Distillate	Change	Kero	Change	Resid	Change	Total Stocks	Change
12/7/2018	\$51.32	(\$1.77)	\$1.42	(\$0.07)	\$1.84	(\$0.15)	441,954	(1,208)	228,337	2,087	124,137	(1,475)	39,002	886	28,233	(401)	1,239,905	(5,983)
12/14/2018	\$52.24	\$0.93	\$1.43	\$0.01	\$1.86	\$0.02	441,457	(497)	230,103	1,766	119,900	(4,237)	39,823	821	27,743	(490)	1,229,588	(10,317)
12/21/2018	\$51.29	(\$0.96)	\$1.41	(\$0.03)	\$1.83	(\$0.03)	441,411	(46)	233,106	3,003	119,902	2	40,450	627	26,870	(873)	1,227,541	(2,047)
12/28/2018	\$46.23	(\$5.06)	\$1.31	(\$0.09)	\$1.74	(\$0.09)	441,418	7	239,996	6,890	129,431	9,529	40,712	262	27,883	1,013	1,242,161	14,620
1/4/2019	\$46.12	(\$0.10)	\$1.29	(\$0.02)	\$1.70	(\$0.05)	439,738	(1,680)	248,062	8,066	140,042	10,611	40,510	(202)	28,264	381	1,255,443	13,282

Total Stocks: **13,282 Mbd** Crude Oil Stocks (excl. SPR): **-1,680 Mbd** Production: **0 Mbd**

Commercial Crude Oil Stocks



Week Ending	WTI	Change	Production	Change	Imports	Change	Exports	Change	Capacity	Inputs	Change	Utilization	Crude Oil Stocks	Change
12/7/2018	\$51.32	(\$1.77)	11,600	(100)	7,393	174	2274	(929)	18,125	17,436	(51)	95.1%	441,954	(1,208)
12/14/2018	\$52.24	\$0.93	11,600	0	7,423	30	2325	51	18,125	17,408	(28)	95.4%	441,457	(497)
12/21/2018	\$51.29	(\$0.96)	11,700	100	7,656	233	2969	644	18,125	17,350	(58)	95.1%	441,411	(46)
12/28/2018	\$46.23	(\$5.06)	11,700	0	7,392	(264)	2237	(732)	18,125	17,760	410	97.2%	441,418	7
1/4/2019	\$46.12	(\$0.10)	11,700	0	7,846	454	2065	(172)	18,125	17,566	(194)	96.1%	439,738	(1,680)