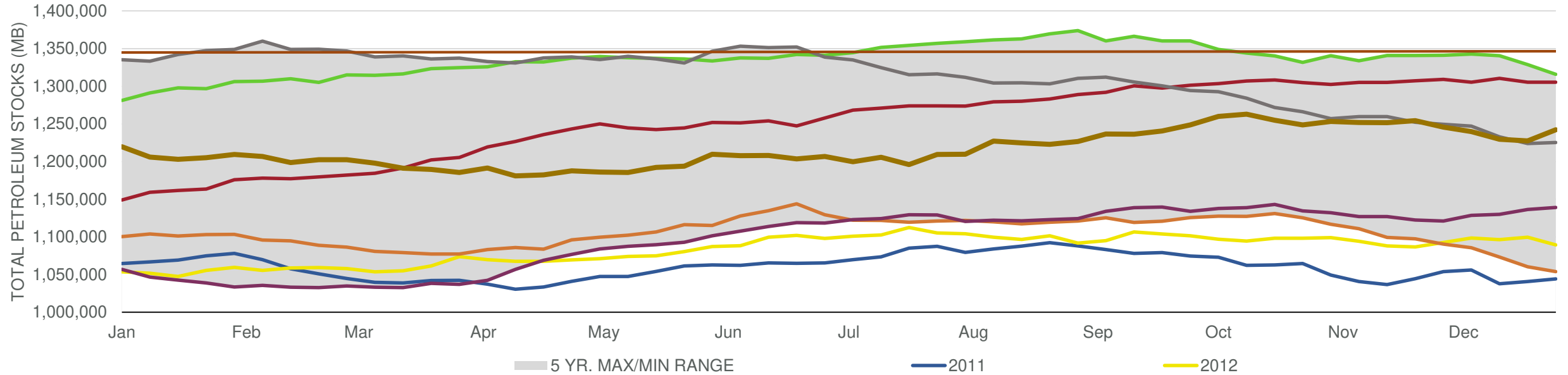


EIA Weekly Petroleum Status Report

Week Ending: 12/28/2018

Total Stocks: **14,620 Mbd** Crude Oil Stocks (excl. SPR): **7 Mbd** Production: **0 Mbd**

Total Petroleum Stocks



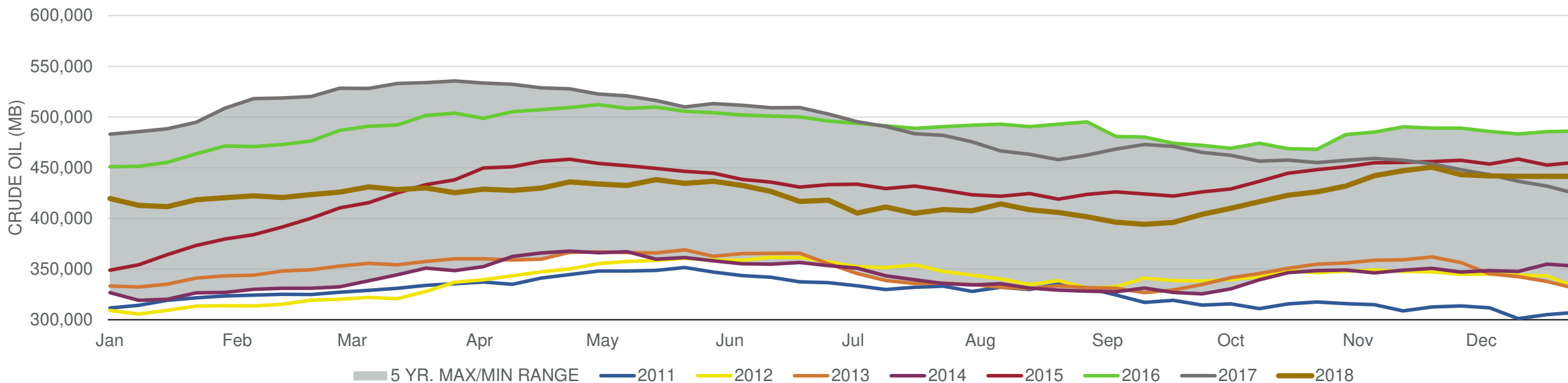
Week Ending	WTI	Change	GC Gaso	Change	NY No 2	Change	Crude	Change	Gaso	Change	Distillate	Change	Kero	Change	Resid	Change	Total Stocks	Change
11/30/2018	\$51.07	(\$4.29)	\$1.44	(\$0.08)	\$1.87	(\$0.18)	443,162	(7,323)	226,250	1,699	125,612	3,811	38,116	(1,594)	28,634	(48)	1,245,888	(8,349)
12/7/2018	\$52.23	\$1.16	\$1.44	\$0.00	\$1.86	(\$0.01)	441,954	(1,208)	228,337	2,087	124,137	(1,475)	39,002	886	28,233	(401)	1,239,905	(5,983)
12/14/2018	\$51.84	(\$0.39)	\$1.43	(\$0.01)	\$1.85	(\$0.01)	441,457	(497)	230,103	1,766	119,900	(4,237)	39,823	821	27,743	(490)	1,229,588	(10,317)
12/21/2018	\$48.16	(\$3.69)	\$1.37	(\$0.06)	\$1.78	(\$0.07)	441,411	(46)	233,106	3,003	119,902	2	40,450	627	26,870	(873)	1,227,541	(2,047)
12/28/2018	\$45.47	(\$2.68)	\$1.28	(\$0.09)	\$1.69	(\$0.09)	441,418	7	239,996	6,890	129,431	9,529	40,712	262	27,883	1,013	1,242,161	14,620

EIA Weekly Petroleum Status Report

Week Ending: 12/28/2018

Total Stocks: **14,620 Mbd** Crude Oil Stocks (excl. SPR): **7 Mbd** Production: **0 Mbd**

Commercial Crude Oil Stocks



Week Ending	WTI	Change	Production	Change	Imports	Change	Exports	Change	Capacity	Inputs	Change	Utilization	Crude Oil Stocks	Change
11/30/2018	\$51.07	(\$4.29)	11,700	0	7,219	(943)	3203	761	18,125	17,487	(66)	95.5%	443,162	(7,323)
12/7/2018	\$52.23	\$1.16	11,600	(100)	7,393	174	2274	(929)	18,125	17,436	(51)	95.1%	441,954	(1,208)
12/14/2018	\$51.84	(\$0.39)	11,600	0	7,423	30	2325	51	18,125	17,408	(28)	95.4%	441,457	(497)
12/21/2018	\$48.16	(\$3.69)	11,700	100	7,656	233	2969	644	18,125	17,350	(58)	95.1%	441,411	(46)
12/28/2018	\$45.47	(\$2.68)	11,700	0	7,392	(264)	2237	(732)	18,125	17,760	410	97.2%	441,418	7