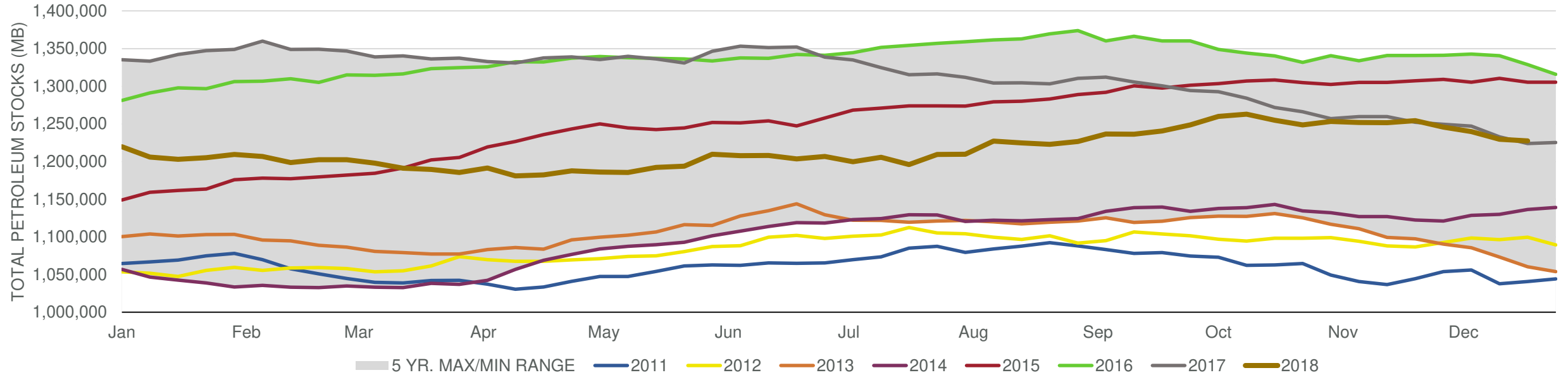


## EIA Weekly Petroleum Status Report

Week Ending: 12/21/2018

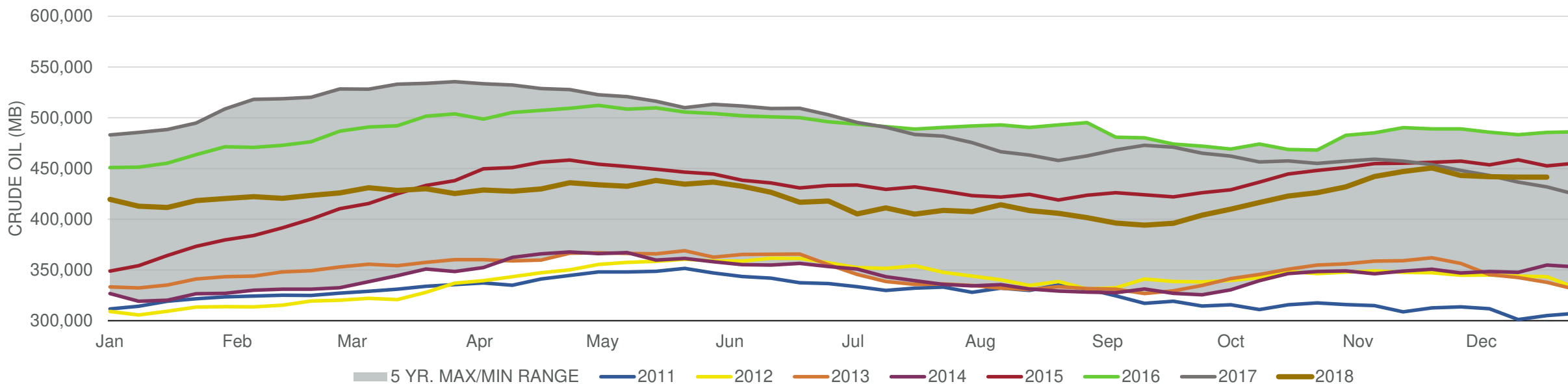
Total Stocks: **-2,047 Mbd** Crude Oil Stocks (excl. SPR): **-46 Mbd** Production: **100 Mbd**

### Total Petroleum Stocks



Week Ending	WTI	Change	GC Gaso	Change	NY No 2	Change	Crude	Change	Gasol	Change	Distillate	Change	Kero	Change	Resid	Change	Total Stocks	Change
11/23/2018	\$50.94	(\$4.64)	\$1.44	(\$0.08)	\$1.90	(\$0.16)	450,485	3,577	224,551	(764)	121,801	2,610	39,710	278	28,682	204	1,254,237	2,434
11/30/2018	\$52.21	\$1.27	\$1.44	(\$0.01)	\$1.85	(\$0.05)	443,162	(7,323)	226,250	1,699	125,612	3,811	38,116	(1,594)	28,634	(48)	1,245,888	(8,349)
12/7/2018	\$51.61	(\$0.60)	\$1.42	(\$0.01)	\$1.84	(\$0.01)	441,954	(1,208)	228,337	2,087	124,137	(1,475)	39,002	886	28,233	(401)	1,239,905	(5,983)
12/14/2018	\$49.57	(\$2.05)	\$1.38	(\$0.04)	\$1.81	(\$0.04)	441,457	(497)	230,103	1,766	119,900	(4,237)	39,823	821	27,743	(490)	1,229,588	(10,317)
12/21/2018	\$45.56	(\$4.00)	\$1.29	(\$0.10)	\$1.72	(\$0.08)	441,411	(46)	233,106	3,003	119,902	2	40,450	627	26,870	(873)	1,227,541	(2,047)

## Commercial Crude Oil Stocks



Week Ending	WTI	Change	Production	Change	Imports	Change	Exports	Change	Capacity	Inputs	Change	Utilization	Crude Oil Stocks	Change
11/23/2018	\$50.94	(\$4.64)	11,700	0	8,162	608	2442	473	18,125	17,553	698	95.6%	450,485	3,577
11/30/2018	\$52.21	\$1.27	11,700	0	7,219	(943)	3203	761	18,125	17,487	(66)	95.5%	443,162	(7,323)
12/7/2018	\$51.61	(\$0.60)	11,600	(100)	7,393	174	2274	(929)	18,125	17,436	(51)	95.1%	441,954	(1,208)
12/14/2018	\$49.57	(\$2.05)	11,600	0	7,423	30	2325	51	18,125	17,408	(28)	95.4%	441,457	(497)
12/21/2018	\$45.56	(\$4.00)	11,700	100	7,656	233	2969	644	18,125	17,350	(58)	95.1%	441,411	(46)