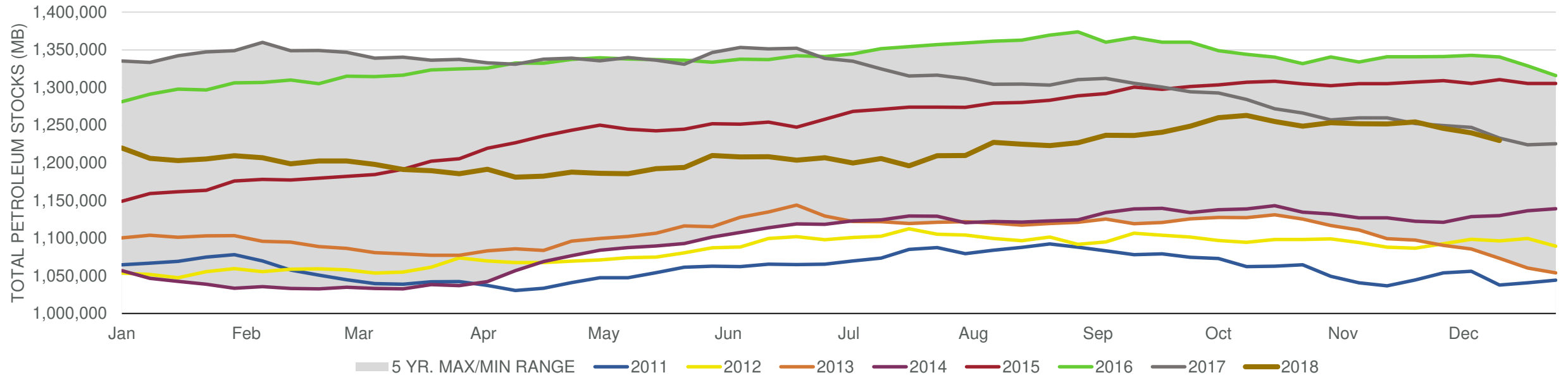


## EIA Weekly Petroleum Status Report

Week Ending: 12/14/2018

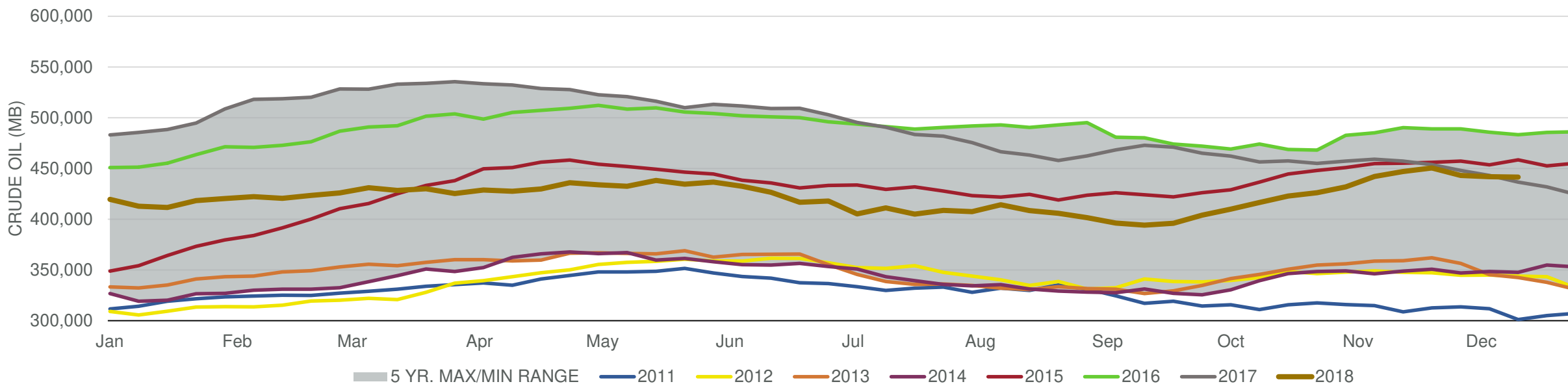
Total Stocks: **-10,317 Mbd** Crude Oil Stocks (excl. SPR): **-497 Mbd** Production: **0 Mbd**

### Total Petroleum Stocks



Week Ending	WTI	Change	GC Gaso	Change	NY No 2	Change	Crude	Change	Gasoline	Change	Distillate	Change	Kero	Change	Resid	Change	Total Stocks	Change
11/16/2018	\$56.92	(\$4.66)	\$1.57	(\$0.12)	\$2.11	(\$0.07)	446,908	4,851	225,315	(1,295)	119,191	(77)	39,432	(526)	28,478	585	1,251,803	(220)
11/23/2018	\$54.99	(\$1.93)	\$1.51	(\$0.06)	\$2.03	(\$0.08)	450,485	3,577	224,551	(764)	121,801	2,610	39,710	278	28,682	204	1,254,237	2,434
11/30/2018	\$51.01	(\$3.97)	\$1.42	(\$0.09)	\$1.84	(\$0.18)	443,162	(7,323)	226,250	1,699	125,612	3,811	38,116	(1,594)	28,634	(48)	1,245,888	(8,349)
12/7/2018	\$52.63	\$1.61	\$1.44	\$0.01	\$1.87	\$0.03	441,954	(1,208)	228,337	2,087	124,137	(1,475)	39,002	886	28,233	(401)	1,239,905	(5,983)
12/14/2018	\$51.54	(\$1.08)	\$1.43	(\$0.01)	\$1.84	(\$0.03)	441,457	(497)	230,103	1,766	119,900	(4,237)	39,823	821	27,743	(490)	1,229,588	(10,317)

## Commercial Crude Oil Stocks



Week Ending	WTI	Change	Production	Change	Imports	Change	Exports	Change	Capacity	Inputs	Change	Utilization	Crude Oil Stocks	Change
11/16/2018	\$56.92	(\$4.66)	11,700	0	7,554	102	1969	(81)	18,125	16,855	423	92.7%	446,908	4,851
11/23/2018	\$54.99	(\$1.93)	11,700	0	8,162	608	2442	473	18,125	17,553	698	95.6%	450,485	3,577
11/30/2018	\$51.01	(\$3.97)	11,700	0	7,219	(943)	3203	761	18,125	17,487	(66)	95.5%	443,162	(7,323)
12/7/2018	\$52.63	\$1.61	11,600	(100)	7,393	174	2274	(929)	18,125	17,436	(51)	95.1%	441,954	(1,208)
12/14/2018	\$51.54	(\$1.08)	11,600	0	7,423	30	2325	51	18,125	17,408	(28)	95.4%	441,457	(497)