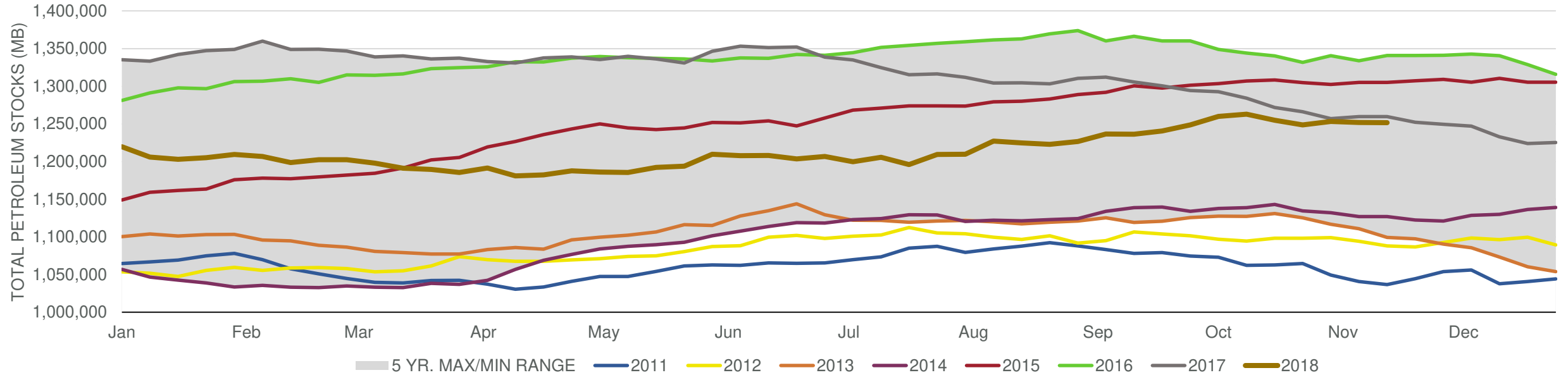


# EIA Weekly Petroleum Status Report

Week Ending: 11/16/2018

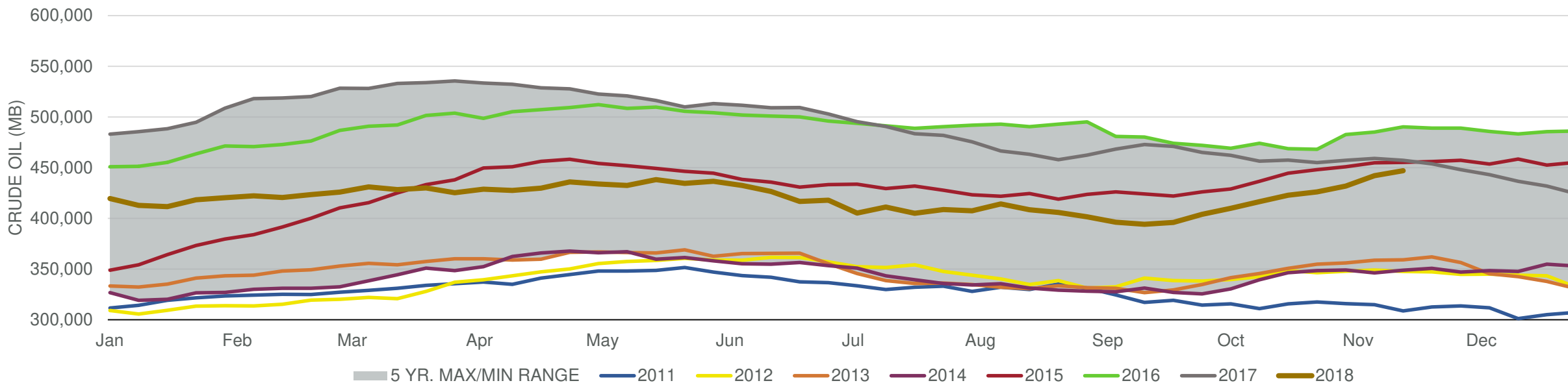
Total Stocks: **-220 Mbd** Crude Oil Stocks (excl. SPR): **4,851 Mbd** Production: **0 Mbd**

Total Petroleum Stocks



Week Ending	WTI	Change	GC Gaso	Change	NY No 2	Change	Crude	Change	Gasoline	Change	Distillate	Change	Kero	Change	Resid	Change	Total Stocks	Change
10/19/2018	\$70.24	(\$2.72)	\$1.94	(\$0.10)	\$2.30	(\$0.05)	422,787	6,346	229,330	(4,826)	130,376	(2,262)	43,896	(1,604)	29,243	(183)	1,254,990	(7,993)
10/26/2018	\$67.43	(\$2.81)	\$1.83	(\$0.11)	\$2.26	(\$0.04)	426,004	3,217	226,169	(3,161)	126,322	(4,054)	42,846	(1,050)	28,669	(574)	1,248,595	(6,395)
11/2/2018	\$65.06	(\$2.37)	\$1.77	(\$0.06)	\$2.21	(\$0.05)	431,787	5,783	228,021	1,852	122,857	(3,465)	42,309	(537)	29,710	1,041	1,253,429	4,834
11/9/2018	\$61.57	(\$3.48)	\$1.68	(\$0.10)	\$2.17	(\$0.04)	442,057	10,270	226,610	(1,411)	119,268	(3,589)	39,958	(2,351)	27,893	(1,817)	1,252,023	(1,406)
11/16/2018	\$56.92	(\$4.66)	\$1.55	(\$0.13)	\$2.08	(\$0.10)	446,908	4,851	225,315	(1,295)	119,191	(77)	39,432	(526)	28,478	585	1,251,803	(220)

## Commercial Crude Oil Stocks



Week Ending	WTI	Change	Production	Change	Imports	Change	Exports	Change	Capacity	Inputs	Change	Utilization	Crude Oil Stocks	Change
10/19/2018	\$70.24	(\$2.72)	10,900	0	7,678	63	2180	398	18,125	16,268	(48)	89.2%	422,787	6,346
10/26/2018	\$67.43	(\$2.81)	11,200	300	7,344	(334)	2485	305	18,125	16,417	149	89.4%	426,004	3,217
11/2/2018	\$65.06	(\$2.37)	11,600	400	7,539	195	2405	(80)	18,125	16,408	(9)	90.0%	431,787	5,783
11/9/2018	\$61.57	(\$3.48)	11,700	100	7,452	(87)	2050	(355)	18,125	16,432	24	90.1%	442,057	10,270
11/16/2018	\$56.92	(\$4.66)	11,700	0	7,554	102	1969	(81)	18,125	16,855	423	92.7%	446,908	4,851