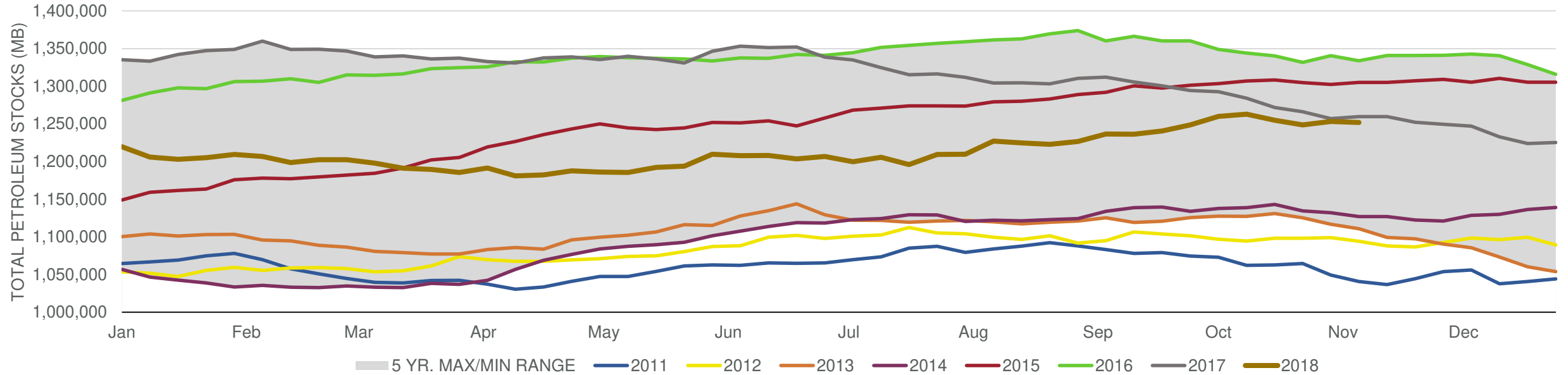


## EIA Weekly Petroleum Status Report

Week Ending: 11/9/2018

Total Stocks: **-1,406 Mbd** Crude Oil Stocks (excl. SPR): **10,270 Mbd** Production: **100 Mbd**

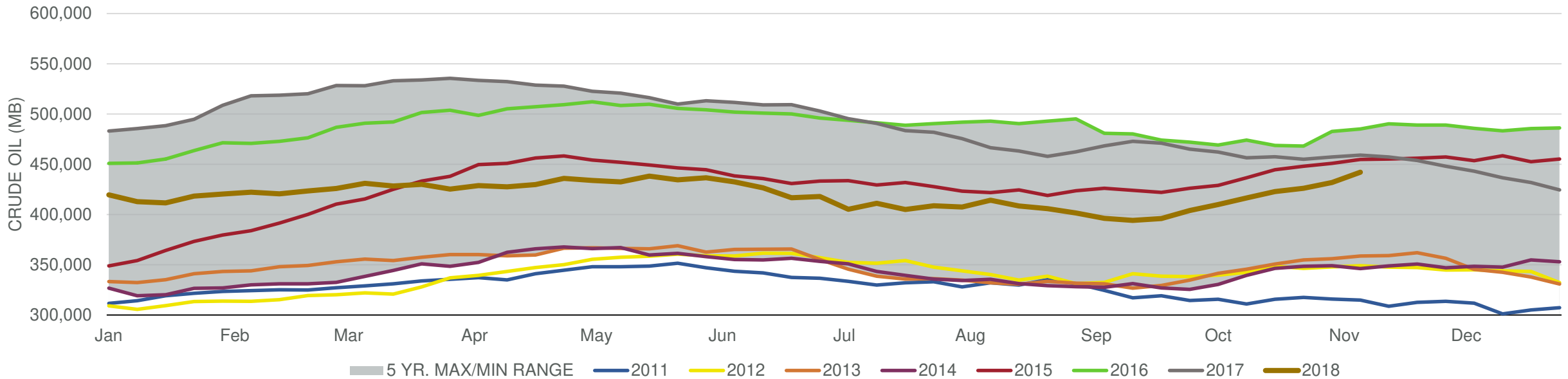
### Total Petroleum Stocks



Week Ending	WTI	Change	GC Gaso	Change	NY No 2	Change	Crude	Change	Gaso	Change	Distillate	Change	Kero	Change	Resid	Change	Total Stocks	Change
10/12/2018	\$72.47	(\$2.44)	\$2.01	(\$0.14)	\$2.34	(\$0.04)	416,441	6,490	234,156	(2,016)	132,638	(827)	45,500	(1,867)	29,426	384	1,262,983	2,987
10/19/2018	\$69.72	(\$2.75)	\$1.93	(\$0.08)	\$2.30	(\$0.04)	422,787	6,346	229,330	(4,826)	130,376	(2,262)	43,896	(1,604)	29,243	(183)	1,254,990	(7,993)
10/26/2018	\$66.98	(\$2.74)	\$1.82	(\$0.11)	\$2.25	(\$0.05)	426,004	3,217	226,169	(3,161)	126,322	(4,054)	42,846	(1,050)	28,669	(574)	1,248,595	(6,395)
11/2/2018	\$64.28	(\$2.70)	\$1.77	(\$0.04)	\$2.20	(\$0.05)	431,787	5,783	228,021	1,852	122,857	(3,465)	42,309	(537)	29,710	1,041	1,253,429	4,834
11/9/2018	\$60.92	(\$3.36)	\$1.65	(\$0.12)	\$2.16	(\$0.03)	442,057	10,270	226,610	(1,411)	119,268	(3,589)	39,958	(2,351)	27,893	(1,817)	1,252,023	(1,406)

Total Stocks: **-1,406 Mbd** Crude Oil Stocks (excl. SPR): **10,270 Mbd** Production: **100 Mbd**

Commercial Crude Oil Stocks



Week Ending	WTI	Change	Production	Change	Imports	Change	Exports	Change	Capacity	Inputs	Change	Utilization	Crude Oil Stocks	Change
10/12/2018	\$72.47	(\$2.44)	10,900	(300)	7,615	218	1782	(794)	18,125	16,316	77	88.8%	416,441	6,490
10/19/2018	\$69.72	(\$2.75)	10,900	0	7,678	63	2180	398	18,125	16,268	(48)	89.2%	422,787	6,346
10/26/2018	\$66.98	(\$2.74)	11,200	300	7,344	(334)	2485	305	18,125	16,417	149	89.4%	426,004	3,217
11/2/2018	\$64.28	(\$2.70)	11,600	400	7,539	195	2405	(80)	18,125	16,408	(9)	90.0%	431,787	5,783
11/9/2018	\$60.92	(\$3.36)	11,700	100	7,452	(87)	2050	(355)	18,125	16,432	24	90.1%	442,057	10,270