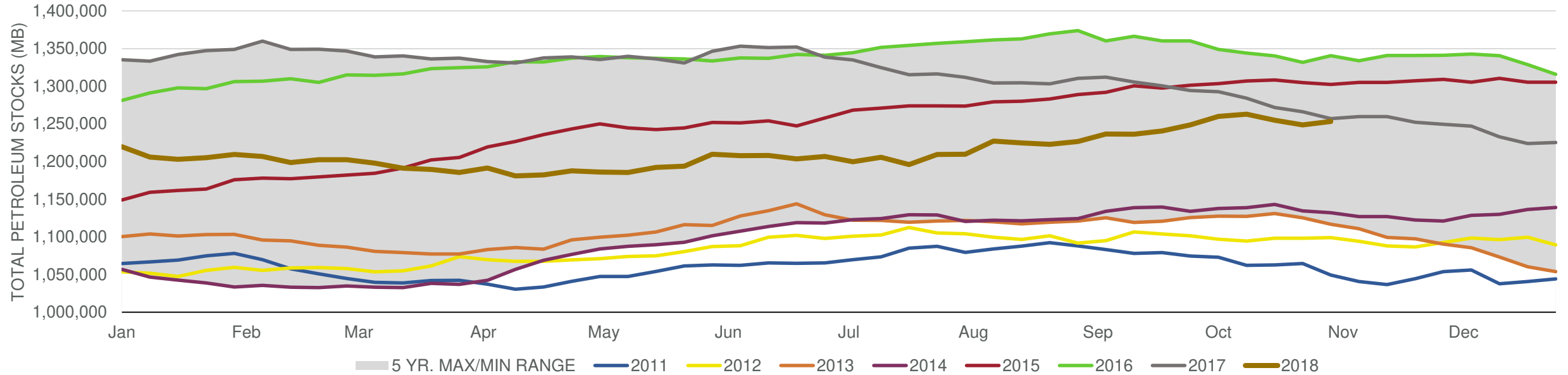


Total Stocks: **4,834 Mbd** Crude Oil Stocks (excl. SPR): **5,783 Mbd** Production: **400 Mbd**

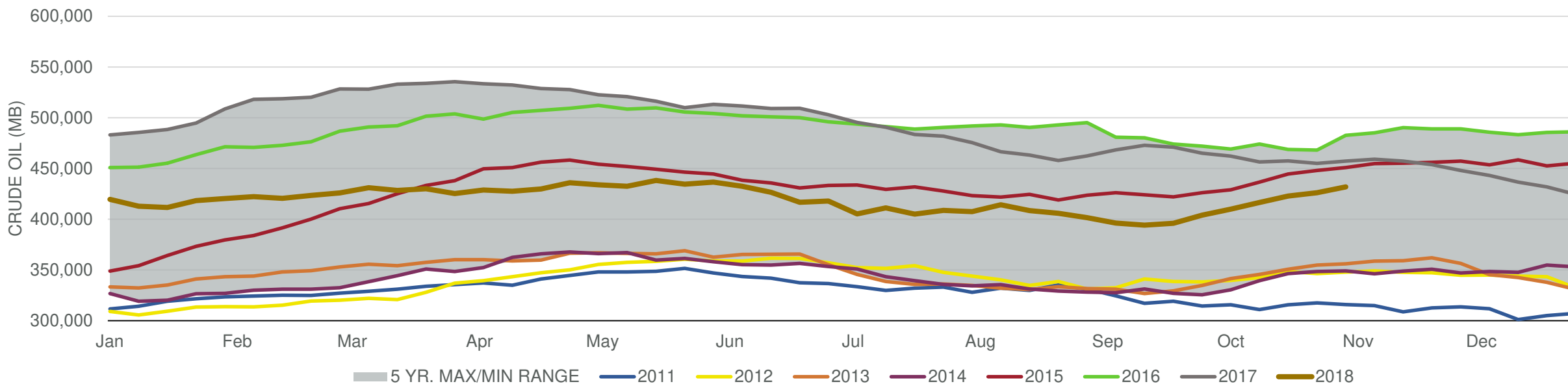
Total Petroleum Stocks



Week Ending	WTI	Change	GC Gaso	Change	NY No 2	Change	Crude	Change	Gasoline	Change	Distillate	Change	Kero	Change	Resid	Change	Total Stocks	Change
10/5/2018	\$75.13	\$2.29	\$2.16	\$0.05	\$2.38	\$0.09	409,951	5,987	236,172	951	133,465	(2,666)	47,367	1,144	29,042	1,043	1,259,996	11,282
10/12/2018	\$72.96	(\$2.17)	\$2.04	(\$0.12)	\$2.35	(\$0.03)	416,441	6,490	234,156	(2,016)	132,638	(827)	45,500	(1,867)	29,426	384	1,262,983	2,987
10/19/2018	\$70.24	(\$2.72)	\$1.94	(\$0.10)	\$2.30	(\$0.05)	422,787	6,346	229,330	(4,826)	130,376	(2,262)	43,896	(1,604)	29,243	(183)	1,254,990	(7,993)
10/26/2018	\$67.43	(\$2.81)	\$1.85	(\$0.09)	\$2.26	(\$0.04)	426,004	3,217	226,169	(3,161)	126,322	(4,054)	42,846	(1,050)	28,669	(574)	1,248,595	(6,395)
11/2/2018	\$65.06	(\$2.37)	\$1.80	(\$0.05)	\$2.21	(\$0.05)	431,787	5,783	228,021	1,852	122,857	(3,465)	42,309	(537)	29,710	1,041	1,253,429	4,834

Total Stocks: **4,834 Mbd** Crude Oil Stocks (excl. SPR): **5,783 Mbd** Production: **400 Mbd**

Commercial Crude Oil Stocks



Week Ending	WTI	Change	Production	Change	Imports	Change	Exports	Change	Capacity	Inputs	Change	Utilization	Crude Oil Stocks	Change
10/5/2018	\$75.13	\$2.29	11,200	100	7,397	(568)	2576	853	18,125	16,239	(352)	88.8%	409,951	5,987
10/12/2018	\$72.96	(\$2.17)	10,900	(300)	7,615	218	1782	(794)	18,125	16,316	77	88.8%	416,441	6,490
10/19/2018	\$70.24	(\$2.72)	10,900	0	7,678	63	2180	398	18,125	16,268	(48)	89.2%	422,787	6,346
10/26/2018	\$67.43	(\$2.81)	11,200	300	7,344	(334)	2485	305	18,125	16,417	149	89.4%	426,004	3,217
11/2/2018	\$65.06	(\$2.37)	11,600	400	7,539	195	2405	(80)	18,125	16,408	(9)	90.0%	431,787	5,783