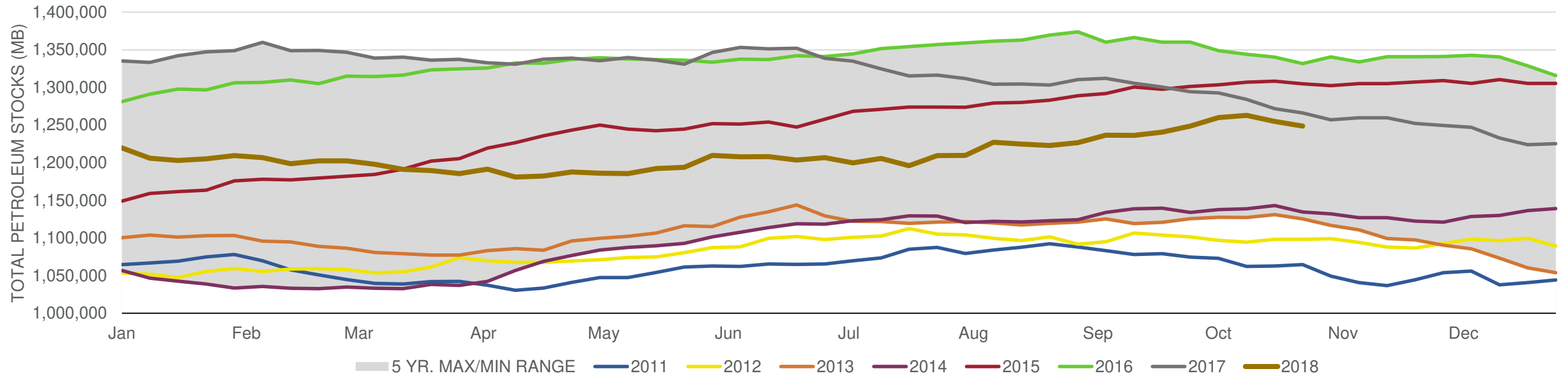


EIA Weekly Petroleum Status Report

Week Ending: 10/31/2018

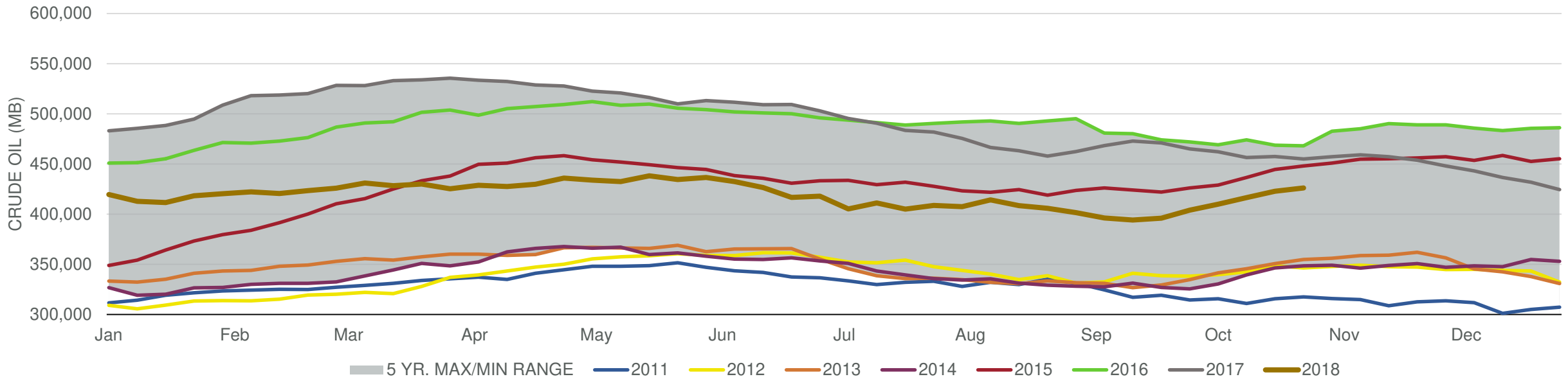
Total Stocks: **-6,395 Mbd** Crude Oil Stocks (excl. SPR): **3,217 Mbd** Production: **300 Mbd**

Total Petroleum Stocks



Week Ending	WTI	Change	GC Gaso	Change	NY No 2	Change	Crude	Change	Gasoline	Change	Distillate	Change	Kero	Change	Resid	Change	Total Stocks	Change
9/28/2018	\$72.84	\$2.56	\$2.11	\$0.09	\$2.29	\$0.09	403,964	7,975	235,221	(459)	136,131	(1,750)	46,223	(418)	27,999	(995)	1,248,714	7,958
10/5/2018	\$75.13	\$2.29	\$2.16	\$0.05	\$2.38	\$0.09	409,951	5,987	236,172	951	133,465	(2,666)	47,367	1,144	29,042	1,043	1,259,996	11,282
10/12/2018	\$72.96	(\$2.17)	\$2.04	(\$0.12)	\$2.35	(\$0.03)	416,441	6,490	234,156	(2,016)	132,638	(827)	45,500	(1,867)	29,426	384	1,262,983	2,987
10/19/2018	\$70.24	(\$2.72)	\$1.95	(\$0.09)	\$2.30	(\$0.05)	422,787	6,346	229,330	(4,826)	130,376	(2,262)	43,896	(1,604)	29,243	(183)	1,254,990	(7,993)
10/26/2018	\$67.43	(\$2.81)	\$1.85	(\$0.10)	\$2.26	(\$0.04)	426,004	3,217	226,169	(3,161)	126,322	(4,054)	42,846	(1,050)	28,669	(574)	1,248,595	(6,395)

Commercial Crude Oil Stocks



Week Ending	WTI	Change	Production	Change	Imports	Change	Exports	Change	Capacity	Inputs	Change	Utilization	Crude Oil Stocks	Change
9/28/2018	\$72.84	\$2.56	11,100	0	7,965	163	1723	(917)	18,125	16,591	77	90.4%	403,964	7,975
10/5/2018	\$75.13	\$2.29	11,200	100	7,397	(568)	2576	853	18,125	16,239	(352)	88.8%	409,951	5,987
10/12/2018	\$72.96	(\$2.17)	10,900	(300)	7,615	218	1782	(794)	18,125	16,316	77	88.8%	416,441	6,490
10/19/2018	\$70.24	(\$2.72)	10,900	0	7,678	63	2180	398	18,125	16,268	(48)	89.2%	422,787	6,346
10/26/2018	\$67.43	(\$2.81)	11,200	300	7,344	(334)	2485	305	18,125	16,417	149	89.4%	426,004	3,217