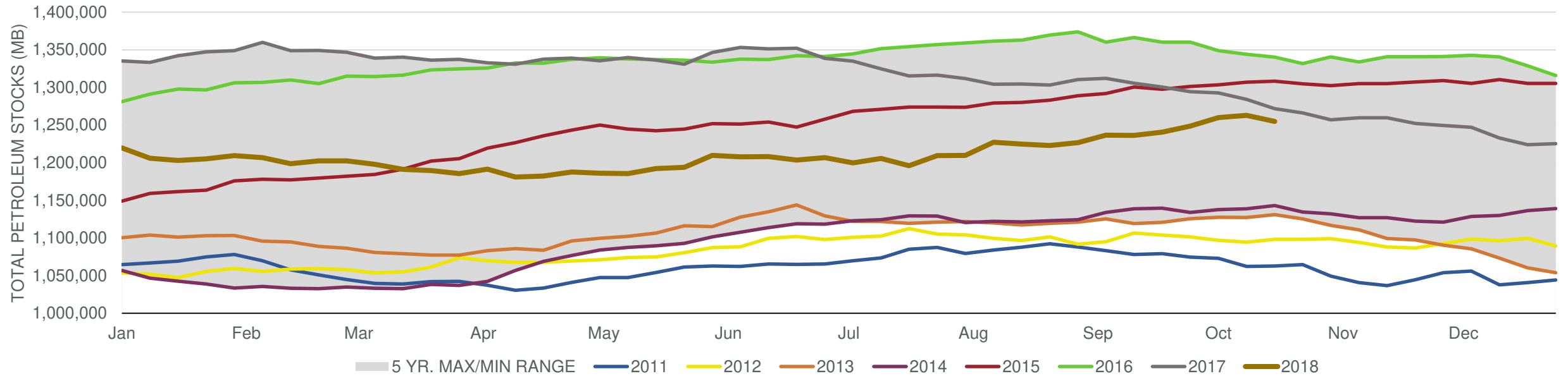


Total Stocks: **-7,993 Mbd** Crude Oil Stocks (excl. SPR): **6,346 Mbd** Production: **0 Mbd**

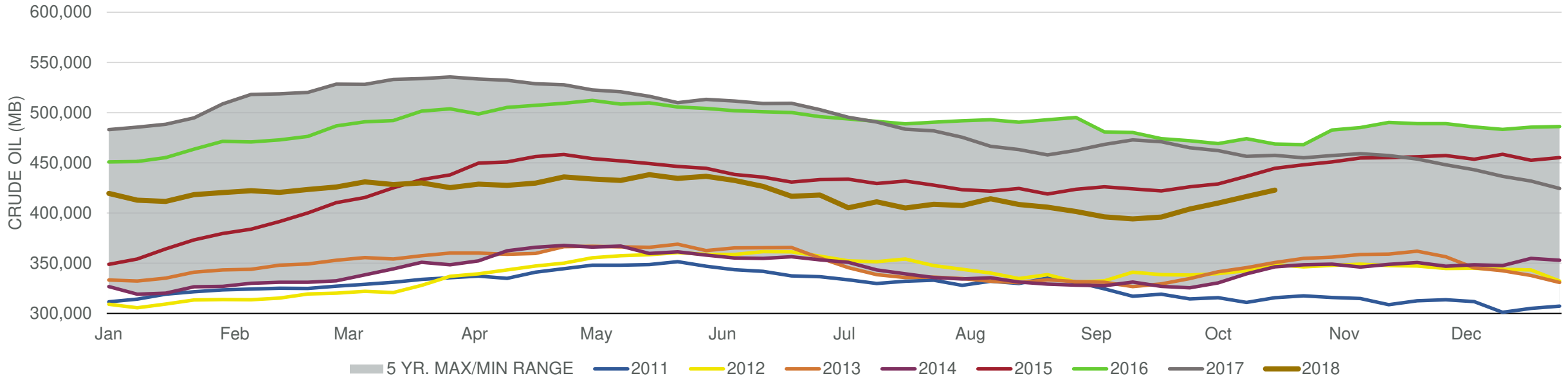
Total Petroleum Stocks



Week Ending	WTI	Change	GC Gaso	Change	NY No 2	Change	Crude	Change	Gasol	Change	Distillate	Change	Kero	Change	Resid	Change	Total Stocks	Change
9/21/2018	\$70.28	\$1.32	\$2.02	\$0.01	\$2.20	(\$0.01)	395,989	1,852	235,680	1,530	137,881	(2,241)	46,641	1,434	28,994	1,153	1,240,756	4,451
9/28/2018	\$72.84	\$2.56	\$2.11	\$0.09	\$2.29	\$0.09	403,964	7,975	235,221	(459)	136,131	(1,750)	46,223	(418)	27,999	(995)	1,248,714	7,958
10/5/2018	\$75.13	\$2.29	\$2.16	\$0.05	\$2.38	\$0.09	409,951	5,987	236,172	951	133,465	(2,666)	47,367	1,144	29,042	1,043	1,259,996	11,282
10/12/2018	\$72.96	(\$2.17)	\$2.07	(\$0.09)	\$2.35	(\$0.03)	416,441	6,490	234,156	(2,016)	132,638	(827)	45,500	(1,867)	29,426	384	1,262,983	2,987
10/19/2018	\$70.24	(\$2.72)	\$1.95	(\$0.12)	\$2.30	(\$0.05)	422,787	6,346	229,330	(4,826)	130,376	(2,262)	43,896	(1,604)	29,243	(183)	1,254,990	(7,993)

Total Stocks: **-7,993 Mbd** Crude Oil Stocks (excl. SPR): **6,346 Mbd** Production: **0 Mbd**

Commercial Crude Oil Stocks



Week Ending	WTI	Change	Production	Change	Imports	Change	Exports	Change	Capacity	Inputs	Change	Utilization	Crude Oil Stocks	Change
9/21/2018	\$70.28	\$1.32	11,100	100	7,802	(222)	2640	273	18,125	16,514	(901)	90.4%	395,989	1,852
9/28/2018	\$72.84	\$2.56	11,100	0	7,965	163	1723	(917)	18,125	16,591	77	90.4%	403,964	7,975
10/5/2018	\$75.13	\$2.29	11,200	100	7,397	(568)	2576	853	18,125	16,239	(352)	88.8%	409,951	5,987
10/12/2018	\$72.96	(\$2.17)	10,900	(300)	7,615	218	1782	(794)	18,125	16,316	77	88.8%	416,441	6,490
10/19/2018	\$70.24	(\$2.72)	10,900	0	7,678	63	2180	398	18,125	16,268	(48)	89.2%	422,787	6,346