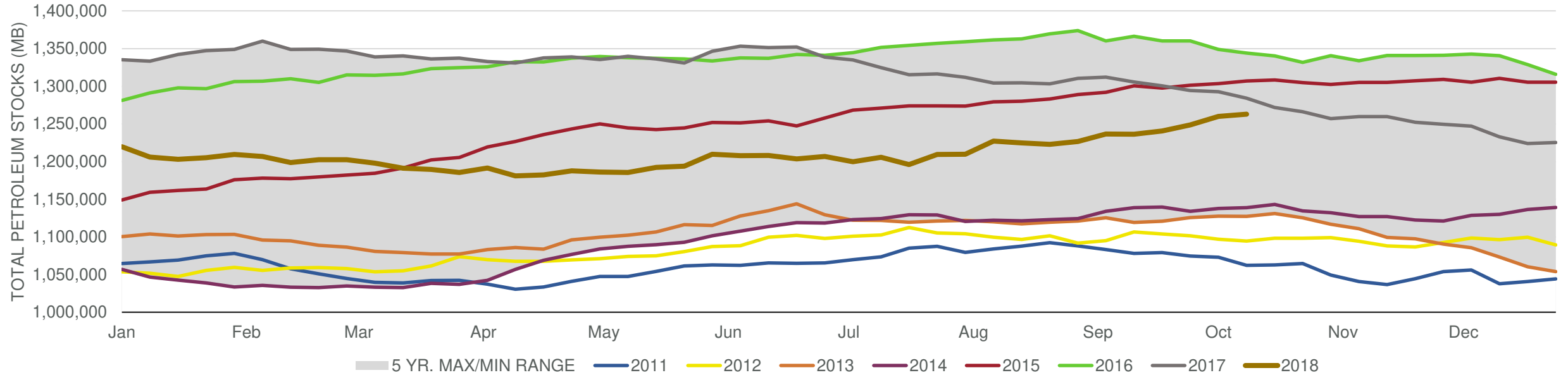


# EIA Weekly Petroleum Status Report

Week Ending: 10/12/2018

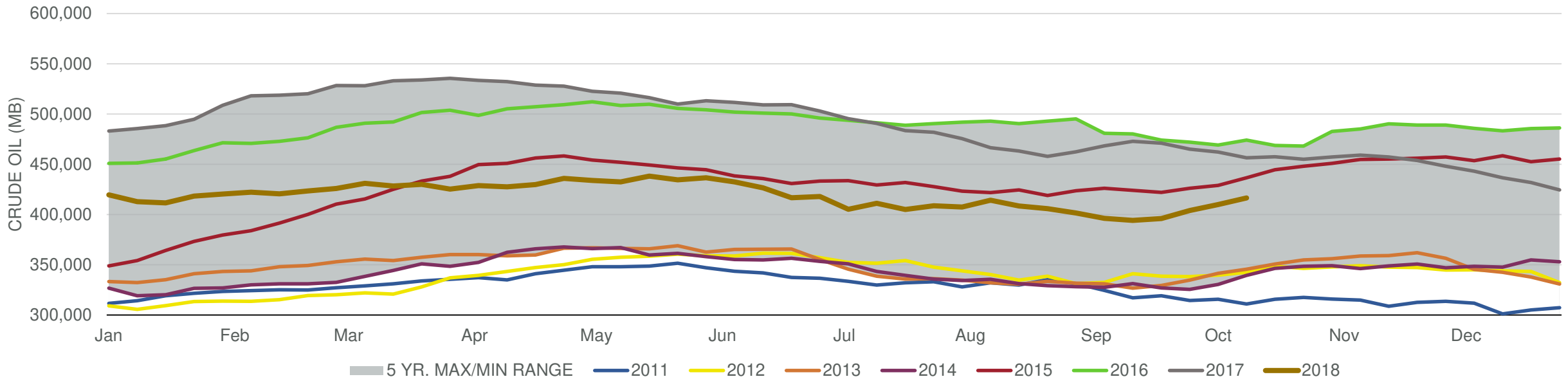
Total Stocks: **2,987 Mbd** Crude Oil Stocks (excl. SPR): **6,490 Mbd** Production: **-300 Mbd**

Total Petroleum Stocks



Week Ending	WTI	Change	GC Gaso	Change	NY No 2	Change	Crude	Change	Gasoline	Change	Distillate	Change	Kero	Change	Resid	Change	Total Stocks	Change
9/14/2018	\$68.96	\$0.45	\$2.01	\$0.00	\$2.21	\$0.00	394,137	(2,057)	234,150	(1,719)	140,122	839	45,207	864	27,841	(461)	1,236,305	(415)
9/21/2018	\$70.28	\$1.32	\$2.02	\$0.01	\$2.20	(\$0.01)	395,989	1,852	235,680	1,530	137,881	(2,241)	46,641	1,434	28,994	1,153	1,240,756	4,451
9/28/2018	\$72.84	\$2.56	\$2.11	\$0.09	\$2.29	\$0.09	403,964	7,975	235,221	(459)	136,131	(1,750)	46,223	(418)	27,999	(995)	1,248,714	7,958
10/5/2018	\$75.13	\$2.29	\$2.16	\$0.05	\$2.38	\$0.09	409,951	5,987	236,172	951	133,465	(2,666)	47,367	1,144	29,042	1,043	1,259,996	11,282
10/12/2018	\$72.96	(\$2.17)	\$2.07	(\$0.09)	\$2.35	(\$0.03)	416,441	6,490	234,156	(2,016)	132,638	(827)	45,500	(1,867)	29,426	384	1,262,983	2,987

## Commercial Crude Oil Stocks



Week Ending	WTI	Change	Production	Change	Imports	Change	Exports	Change	Capacity	Inputs	Change	Utilization	Crude Oil Stocks	Change
9/14/2018	\$68.96	\$0.45	11,000	100	8,024	433	2367	539	18,125	17,415	(442)	95.4%	394,137	(2,057)
9/21/2018	\$70.28	\$1.32	11,100	100	7,802	(222)	2640	273	18,125	16,514	(901)	90.4%	395,989	1,852
9/28/2018	\$72.84	\$2.56	11,100	0	7,965	163	1723	(917)	18,125	16,591	77	90.4%	403,964	7,975
10/5/2018	\$75.13	\$2.29	11,200	100	7,397	(568)	2576	853	18,125	16,239	(352)	88.8%	409,951	5,987
10/12/2018	\$72.96	(\$2.17)	10,900	(300)	7,615	218	1782	(794)	18,125	16,316	77	88.8%	416,441	6,490