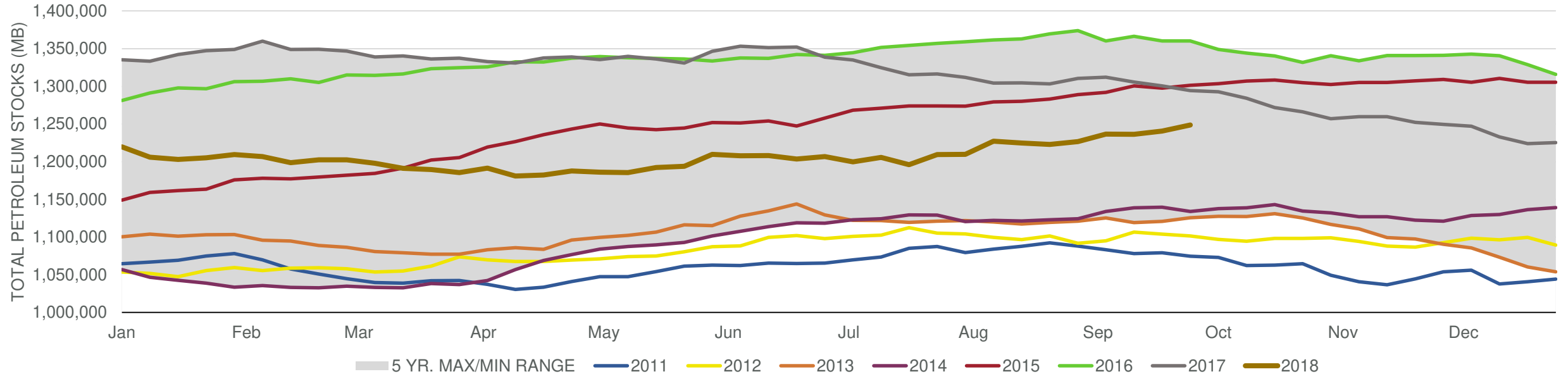


EIA Weekly Petroleum Status Report

Week Ending: 09/28/2018

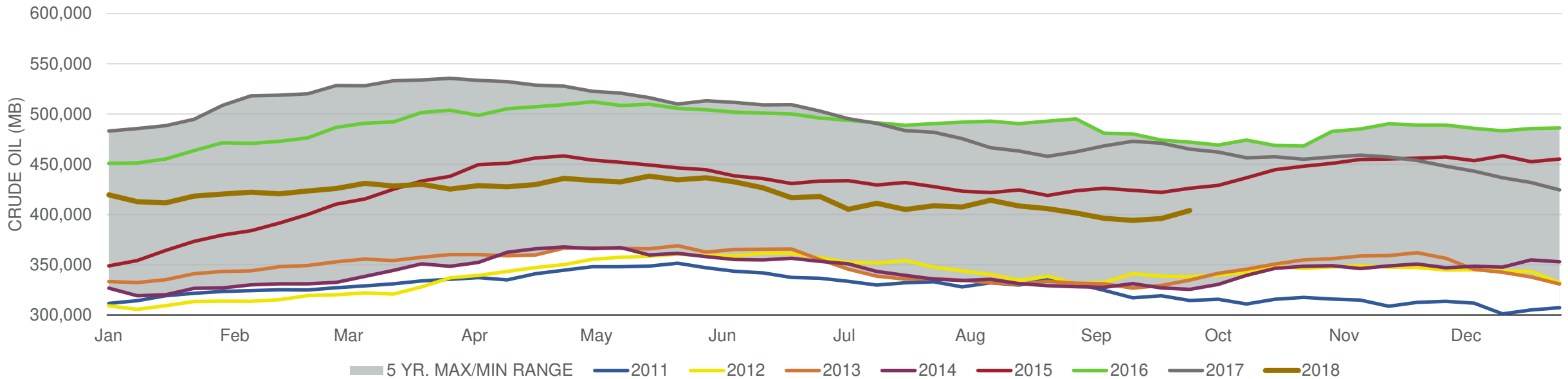
Total Stocks: **7,958 Mbd** Crude Oil Stocks (excl. SPR): **7,975 Mbd** Production: **0 Mbd**

Total Petroleum Stocks



Week Ending	WTI	Change	GC Gaso	Change	NY No 2	Change	Crude	Change	Gasol	Change	Distillate	Change	Kero	Change	Resid	Change	Total Stocks	Change
8/31/2018	\$69.66	\$1.55	\$2.17	\$0.13	\$2.20	\$0.09	401,490	(4,302)	234,619	1,845	133,120	3,119	41,990	703	27,755	(352)	1,226,610	3,552
9/7/2018	\$68.51	(\$1.14)	\$2.01	(\$0.16)	\$2.20	\$0.01	396,194	(5,296)	235,869	1,250	139,283	6,163	44,343	2,353	28,302	547	1,236,720	10,110
9/14/2018	\$68.96	\$0.45	\$2.01	\$0.00	\$2.21	\$0.00	394,137	(2,057)	234,150	(1,719)	140,122	839	45,207	864	27,841	(461)	1,236,305	(415)
9/21/2018	\$70.28	\$1.32	\$2.01	(\$0.00)	\$2.20	(\$0.01)	395,989	1,852	235,680	1,530	137,881	(2,241)	46,641	1,434	28,994	1,153	1,240,756	4,451
9/28/2018	\$72.84	\$2.56	\$2.09	\$0.08	\$2.29	\$0.09	403,964	7,975	235,221	(459)	136,131	(1,750)	46,223	(418)	27,999	(995)	1,248,714	7,958

Commercial Crude Oil Stocks



Week Ending	WTI	Change	Production	Change	Imports	Change	Exports	Change	Capacity	Inputs	Change	Utilization	Crude Oil Stocks	Change
8/31/2018	\$69.66	\$1.55	11,000	0	7,714	229	1508	(271)	18,125	17,647	81	96.6%	401,490	(4,302)
9/7/2018	\$68.51	(\$1.14)	10,900	(100)	7,591	(123)	1828	320	18,125	17,857	210	97.6%	396,194	(5,296)
9/14/2018	\$68.96	\$0.45	11,000	100	8,024	433	2367	539	18,125	17,415	(442)	95.4%	394,137	(2,057)
9/21/2018	\$70.28	\$1.32	11,100	100	7,802	(222)	2640	273	18,125	16,514	(901)	90.4%	395,989	1,852
9/28/2018	\$72.84	\$2.56	11,100	0	7,965	163	1723	(917)	18,125	16,591	77	90.4%	403,964	7,975