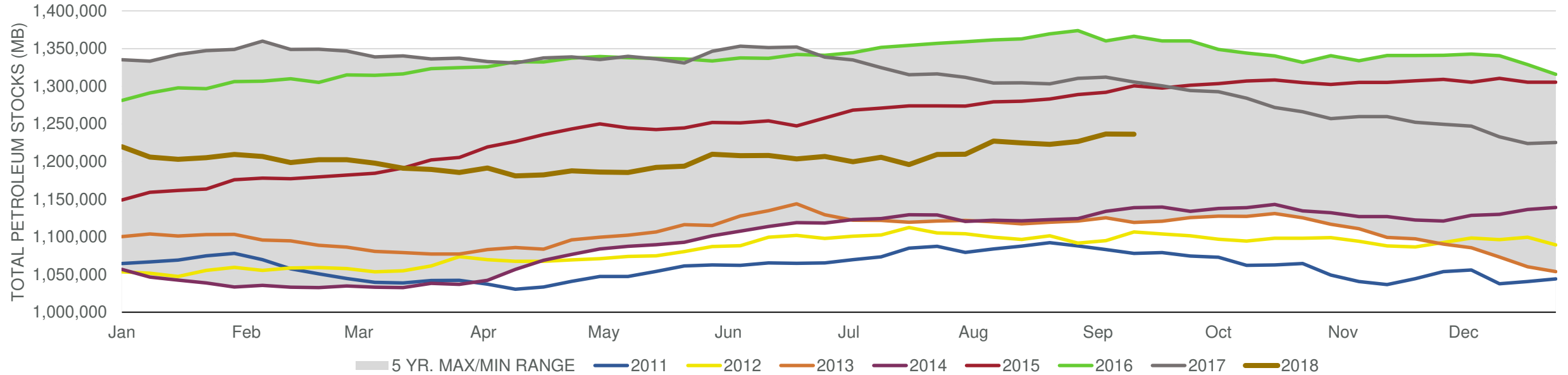


EIA Weekly Petroleum Status Report

Week Ending: 9/14/2018

Total Stocks: **-415 Mb** Crude Oil Stocks (excl. SPR): **-2,057 Mb** Production: **100 Mbd**

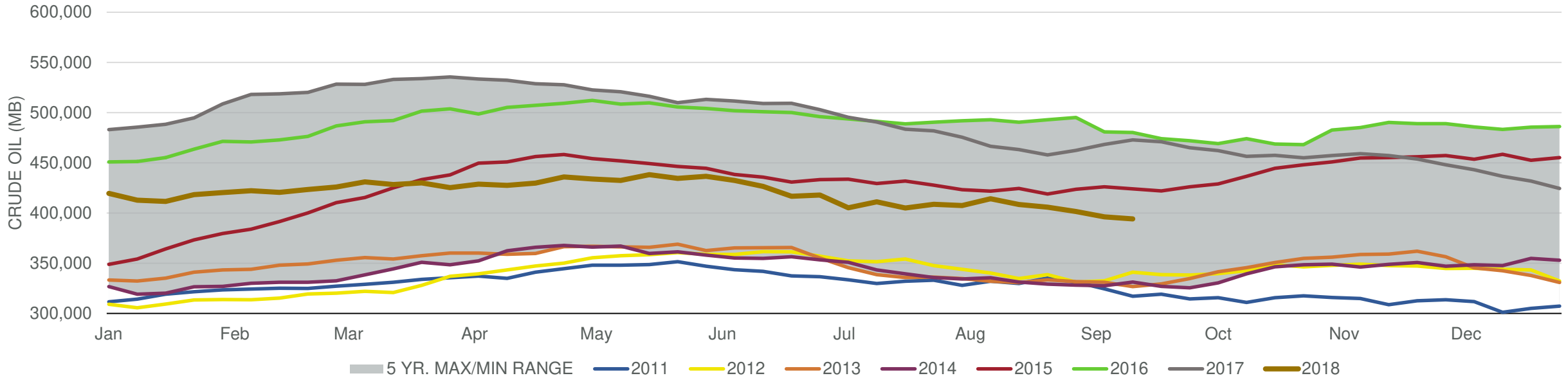
Total Petroleum Stocks



Week Ending	WTI	Change	GC Gaso	Change	NY No 2	Change	Crude	Change	Gasoline	Change	Distillate	Change	Kero	Change	Resid	Change	Total Stocks	Change
8/17/2018	\$66.15	(\$1.76)	\$2.00	(\$0.02)	\$2.09	(\$0.01)	408,358	(5,836)	234,328	1,200	130,838	1,849	41,595	1,117	28,287	(367)	1,224,772	(2,534)
8/24/2018	\$68.10	\$1.96	\$2.03	\$0.04	\$2.11	\$0.02	405,792	(2,566)	232,774	(1,554)	130,001	(837)	41,287	(308)	28,107	(180)	1,223,058	(1,714)
8/31/2018	\$69.66	\$1.55	\$2.17	\$0.13	\$2.20	\$0.09	401,490	(4,302)	234,619	1,845	133,120	3,119	41,990	703	27,755	(352)	1,226,610	3,552
9/7/2018	\$68.51	(\$1.14)	\$2.05	(\$0.11)	\$2.20	\$0.01	396,194	(5,296)	235,869	1,250	139,283	6,163	44,343	2,353	28,302	547	1,236,720	10,110
9/14/2018	\$68.96	\$0.45	\$2.01	(\$0.05)	\$2.21	\$0.00	394,137	(2,057)	234,150	(1,719)	140,122	839	45,207	864	27,841	(461)	1,236,305	(415)

Total Stocks: **-415 Mb** Crude Oil Stocks (excl. SPR): **-2,057 Mb** Production: **100 Mbd**

Commercial Crude Oil Stocks



Week Ending	WTI	Change	Production	Change	Imports	Change	Exports	Change	Capacity	Inputs	Change	Utilization	Crude Oil Stocks	Change
8/17/2018	\$66.15	(\$1.76)	11,000	100	7,518	(1,496)	1155	(437)	18,125	17,892	(89)	98.1%	408,358	(5,836)
8/24/2018	\$68.10	\$1.96	11,000	0	7,485	(33)	1779	624	18,125	17,566	(326)	96.3%	405,792	(2,566)
8/31/2018	\$69.66	\$1.55	11,000	0	7,714	229	1508	(271)	18,125	17,647	81	96.6%	401,490	(4,302)
9/7/2018	\$68.51	(\$1.14)	10,900	(100)	7,591	(123)	1828	320	18,125	17,857	210	97.6%	396,194	(5,296)
9/14/2018	\$68.96	\$0.45	11,000	100	8,024	433	2367	539	18,125	17,415	(442)	95.4%	394,137	(2,057)