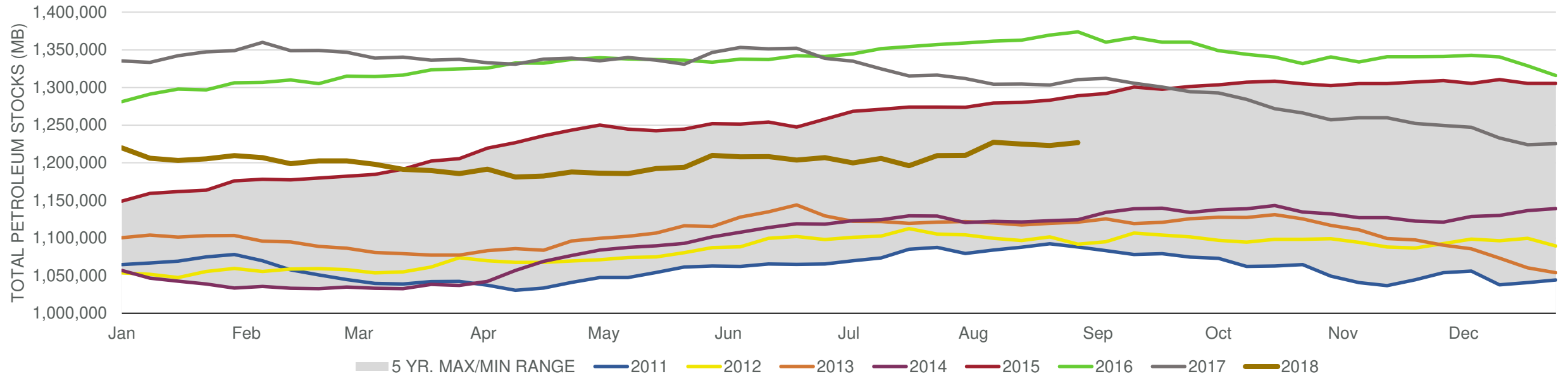


## EIA Weekly Petroleum Status Report

Week Ending: 8/31/2018

Total Stocks: **3,552 Mb** Crude Oil Stocks (excl. SPR): **-4,302 Mb** Production: **0 Mbd**

Total Petroleum Stocks



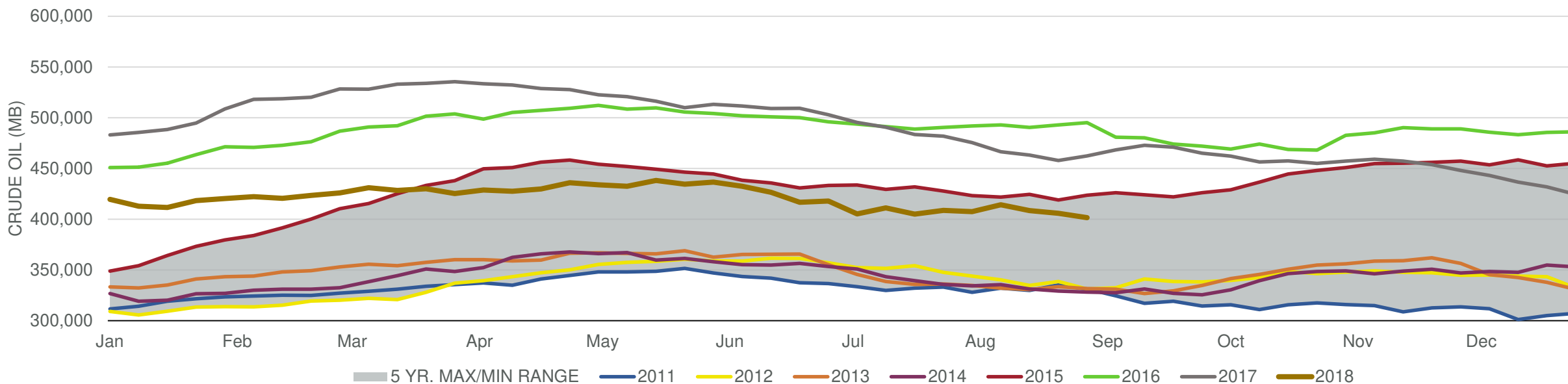
Week Ending	WTI	Change	GC Gaso	Change	NY No 2	Change	Crude	Change	Gaso	Change	Distillate	Change	Kero	Change	Resid	Change	Total Stocks	Change
8/3/2018	\$69.03	(\$1.64)	\$2.05	(\$0.03)	\$2.10	(\$0.03)	407,389	(1,351)	233,868	2,900	125,423	1,230	39,735	(1,382)	28,305	(415)	1,209,862	3,275
8/10/2018	\$67.55	(\$1.47)	\$2.01	(\$0.04)	\$2.11	\$0.01	414,194	6,805	233,128	(740)	128,989	3,566	40,478	743	28,654	349	1,227,306	17,444
8/17/2018	\$66.00	(\$1.56)	\$1.99	(\$0.02)	\$2.08	(\$0.03)	408,358	(5,836)	234,328	1,200	130,838	1,849	41,595	1,117	28,287	(367)	1,224,772	(2,534)
8/24/2018	\$68.80	\$2.80	\$2.07	\$0.08	\$2.15	\$0.07	405,792	(2,566)	232,774	(1,554)	130,001	(837)	41,287	(308)	28,107	(180)	1,223,058	(1,714)
8/31/2018	\$69.71	\$0.92	\$2.15	\$0.08	\$2.21	\$0.06	401,490	(4,302)	234,619	1,845	133,120	3,119	41,990	703	27,755	(352)	1,226,610	3,552

# EIA Weekly Petroleum Status Report

Week Ending: 8/31/2018

Total Stocks: **3,552 Mb** Crude Oil Stocks (excl. SPR): **-4,302 Mb** Production: **0 Mbd**

## Commercial Crude Oil Stocks



Week Ending	WTI	Change	Production	Change	Imports	Change	Exports	Change	Capacity	Inputs	Change	Utilization	Crude Oil Stocks	Change
8/3/2018	\$69.03	(\$1.64)	10,800	(100)	7,931	182	1850	540	18,125	17,598	118	96.6%	407,389	(1,351)
8/10/2018	\$67.55	(\$1.47)	10,900	100	9,014	1,083	1592	(258)	18,125	17,981	383	98.1%	414,194	6,805
8/17/2018	\$66.00	(\$1.56)	11,000	100	7,518	(1,496)	1155	(437)	18,125	17,892	(89)	98.1%	408,358	(5,836)
8/24/2018	\$68.80	\$2.80	11,000	0	7,485	(33)	1779	624	18,125	17,566	(326)	96.3%	405,792	(2,566)
8/31/2018	\$69.71	\$0.92	11,000	0	7,714	229	1508	(271)	18,125	17,647	81	96.6%	401,490	(4,302)