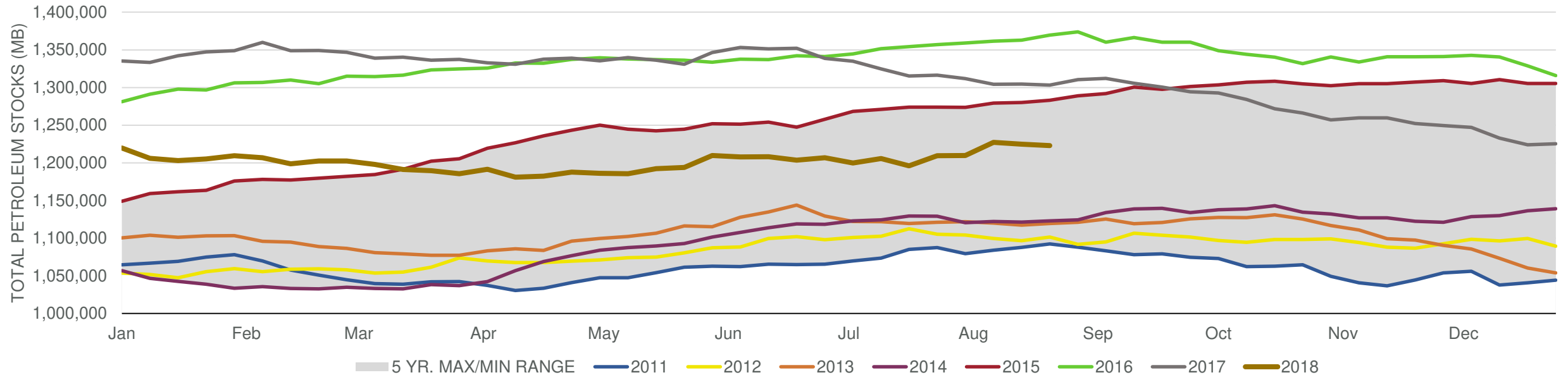


EIA Weekly Petroleum Status Report

Week Ending: 8/24/2018

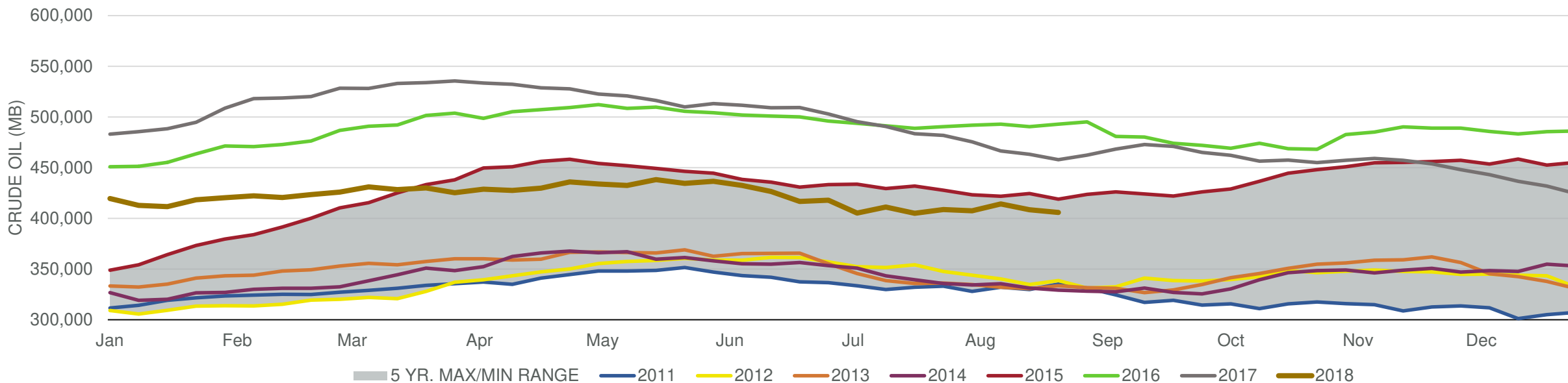
Total Stocks: **-1,714 Mb** Crude Oil Stocks (excl. SPR): **-2,566 Mb** Production: **0 Mbd**

Total Petroleum Stocks



Week Ending	WTI	Change	GC Gaso	Change	NY No 2	Change	Crude	Change	Gasoline	Change	Distillate	Change	Kero	Change	Resid	Change	Total Stocks	Change
7/27/2018	\$70.01	\$1.06	\$2.06	\$0.08	\$2.11	\$0.06	408,740	3,803	230,968	(2,536)	124,193	2,983	41,117	1,332	28,720	328	1,206,587	10,580
8/3/2018	\$69.46	(\$0.55)	\$2.06	(\$0.00)	\$2.10	(\$0.01)	407,389	(1,351)	233,868	2,900	125,423	1,230	39,735	(1,382)	28,305	(415)	1,209,862	3,275
8/10/2018	\$67.90	(\$1.56)	\$2.02	(\$0.04)	\$2.10	\$0.00	414,194	6,805	233,128	(740)	128,989	3,566	40,478	743	28,654	349	1,227,306	17,444
8/17/2018	\$66.15	(\$1.76)	\$2.00	(\$0.02)	\$2.08	(\$0.02)	408,358	(5,836)	234,328	1,200	130,838	1,849	41,595	1,117	28,287	(367)	1,224,772	(2,534)
8/24/2018	\$68.10	\$1.96	\$2.03	\$0.04	\$2.13	\$0.05	405,792	(2,566)	232,774	(1,554)	130,001	(837)	41,287	(308)	28,107	(180)	1,223,058	(1,714)

Commercial Crude Oil Stocks



Week Ending	WTI	Change	Production	Change	Imports	Change	Exports	Change	Capacity	Inputs	Change	Utilization	Crude Oil Stocks	Change
7/27/2018	\$70.01	\$1.06	10,900	(100)	7,749	(21)	1310	(1,373)	18,125	17,480	195	96.1%	408,740	3,803
8/3/2018	\$69.46	(\$0.55)	10,800	(100)	7,931	182	1850	540	18,125	17,598	118	96.6%	407,389	(1,351)
8/10/2018	\$67.90	(\$1.56)	10,900	100	9,014	1,083	1592	(258)	18,125	17,981	383	98.1%	414,194	6,805
8/17/2018	\$66.15	(\$1.76)	11,000	100	7,518	(1,496)	1155	(437)	18,125	17,892	(89)	98.1%	408,358	(5,836)
8/24/2018	\$68.10	\$1.96	11,000	0	7,485	(33)	1779	624	18,125	17,566	(326)	96.3%	405,792	(2,566)