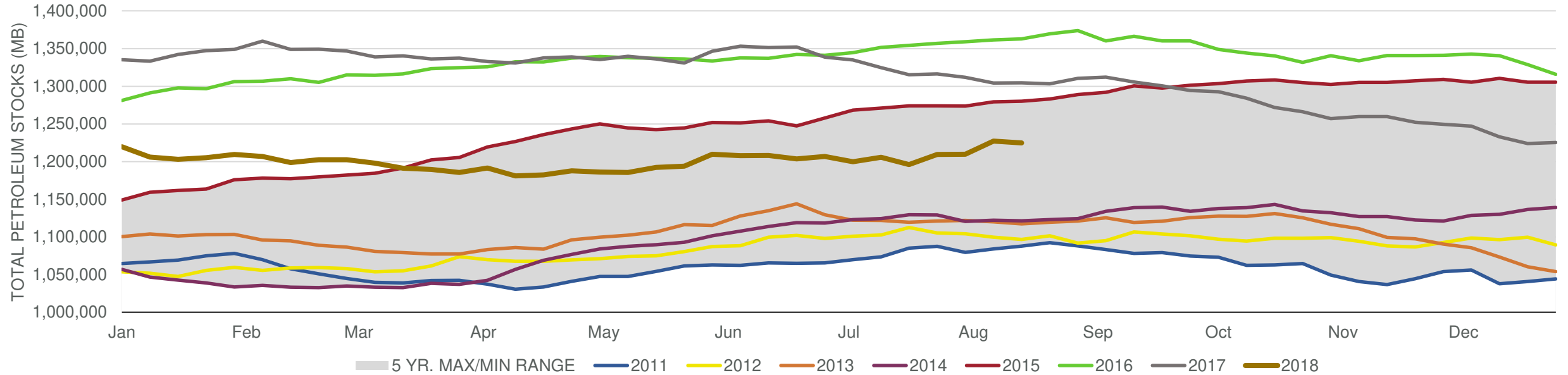


## EIA Weekly Petroleum Status Report

Week Ending: 8/17/2018

Total Stocks: **-2,534 Mb** Crude Oil Stocks (excl. SPR): **-5,836 Mb** Production: **100 Mbd**

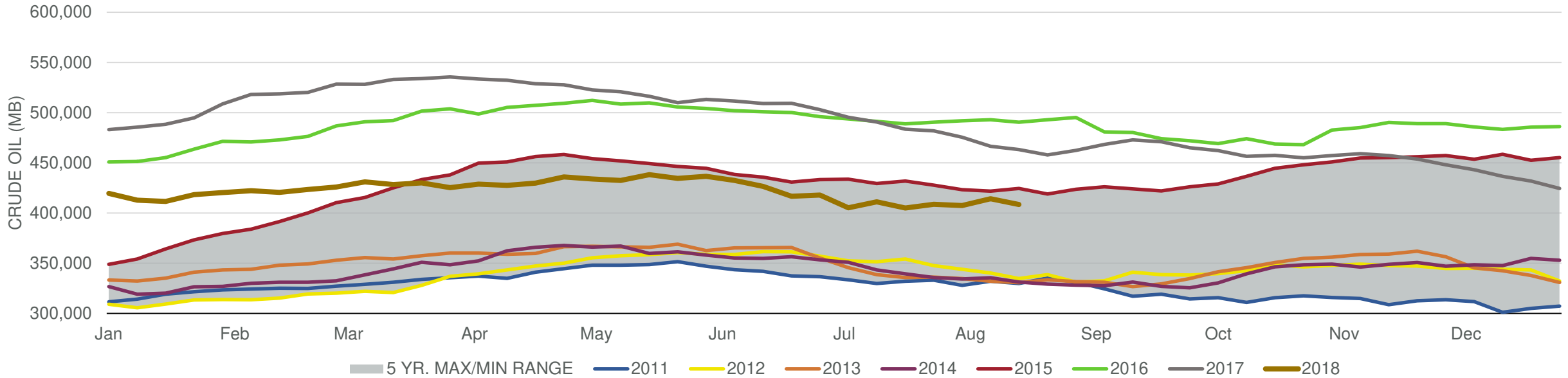
### Total Petroleum Stocks



Week Ending	WTI	Change	GC Gaso	Change	NY No 2	Change	Crude	Change	Gasol	Change	Distillate	Change	Kero	Change	Resid	Change	Total Stocks	Change
7/20/2018	\$68.95	(\$3.01)	\$1.98	(\$0.07)	\$2.05	(\$0.08)	404,937	(6,147)	233,504	(2,328)	121,210	(101)	39,785	(983)	28,392	316	1,196,007	(9,729)
7/27/2018	\$70.01	\$1.06	\$2.06	\$0.08	\$2.11	\$0.06	408,740	3,803	230,968	(2,536)	124,193	2,983	41,117	1,332	28,720	328	1,206,587	10,580
8/3/2018	\$69.46	(\$0.55)	\$2.06	(\$0.00)	\$2.10	(\$0.01)	407,389	(1,351)	233,868	2,900	125,423	1,230	39,735	(1,382)	28,305	(415)	1,209,862	3,275
8/10/2018	\$67.90	(\$1.56)	\$2.02	(\$0.04)	\$2.10	\$0.00	414,194	6,805	233,128	(740)	128,989	3,566	40,478	743	28,654	349	1,227,306	17,444
8/17/2018	\$66.15	(\$1.76)	\$2.00	(\$0.02)	\$2.08	(\$0.02)	408,358	(5,836)	234,328	1,200	130,838	1,849	41,595	1,117	28,287	(367)	1,224,772	(2,534)

Total Stocks: **-2,534 Mb** Crude Oil Stocks (excl. SPR): **-5,836 Mb** Production: **100 Mbd**

Commercial Crude Oil Stocks



Week Ending	WTI	Change	Production	Change	Imports	Change	Exports	Change	Capacity	Inputs	Change	Utilization	Crude Oil Stocks	Change
7/20/2018	\$68.95	(\$3.01)	11,000	0	7,770	(1,296)	2683	1,222	18,125	17,285	46	93.8%	404,937	(6,147)
7/27/2018	\$70.01	\$1.06	10,900	(100)	7,749	(21)	1310	(1,373)	18,125	17,480	195	96.1%	408,740	3,803
8/3/2018	\$69.46	(\$0.55)	10,800	(100)	7,931	182	1850	540	18,125	17,598	118	96.6%	407,389	(1,351)
8/10/2018	\$67.90	(\$1.56)	10,900	100	9,014	1,083	1592	(258)	18,125	17,981	383	98.1%	414,194	6,805
8/17/2018	\$66.15	(\$1.76)	11,000	100	7,518	(1,496)	1155	(437)	18,125	17,892	(89)	98.1%	408,358	(5,836)