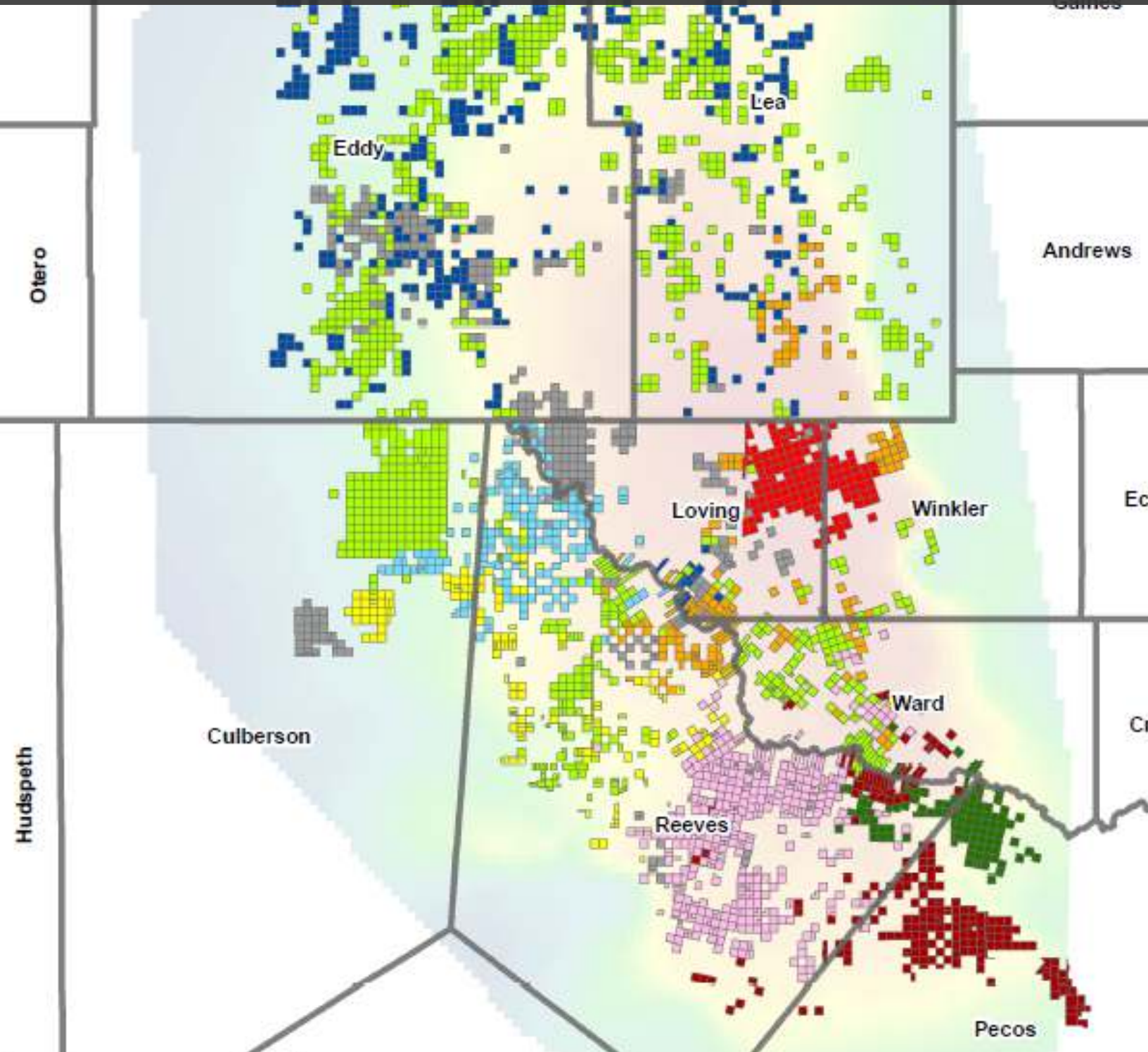


Delaware Basin Report

Sample Report – July, 2018



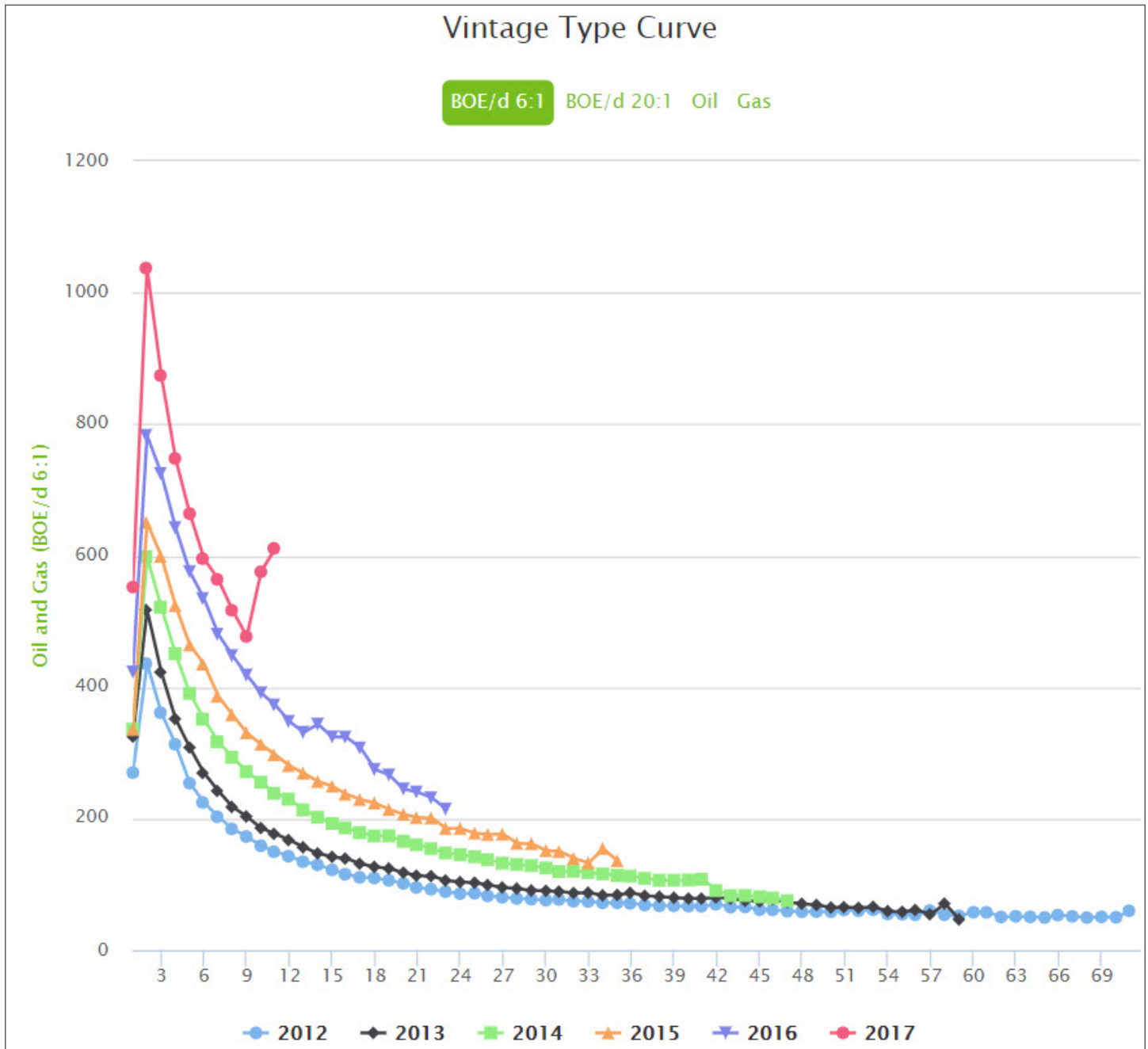
Learn more at drillinginfo.com

Vintage Type Curves

Consistent improvement year over year with horizontal development. Increasing proppant intensities have positively impacted production.

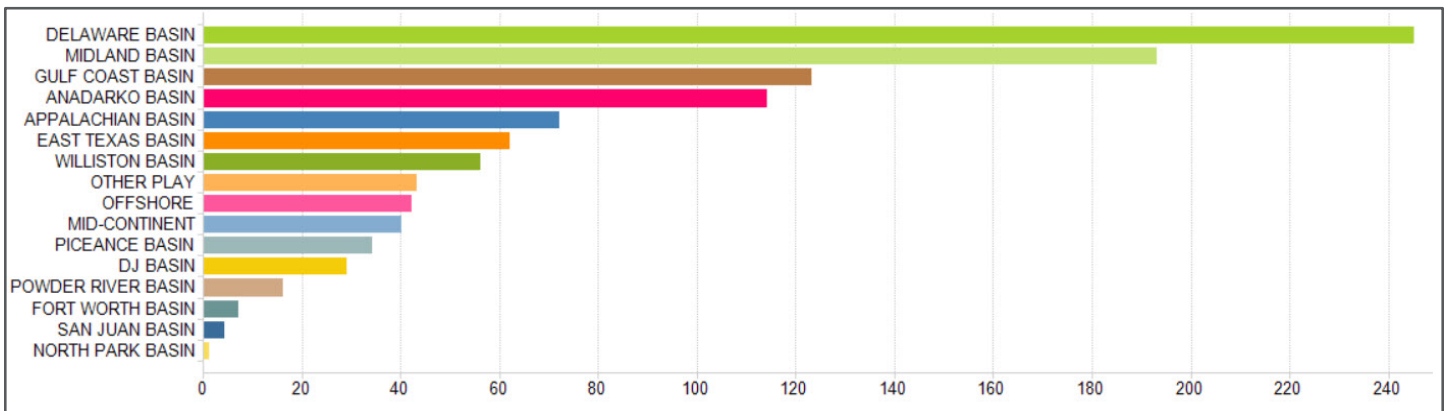
2017: 1,037 BOE/D, +32%
 2016: 783 BOE/D, +20%
 2015: 651 BOE/D, +9%

2014: 598 BOE/D, +16%
 2013: 517 BOE/D, +19%
 2012: 436 BOE/D

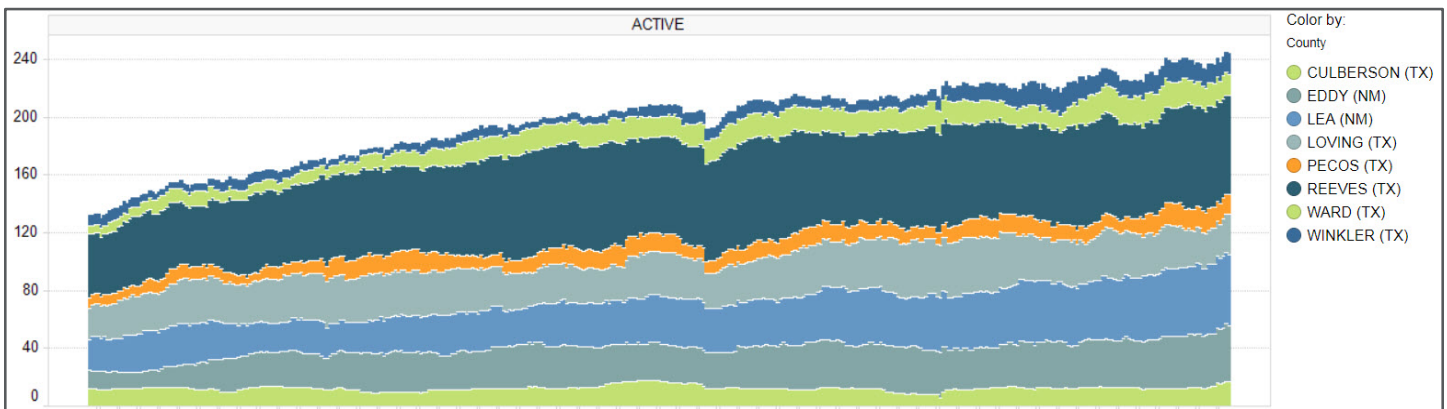


Delaware Basin Rigs

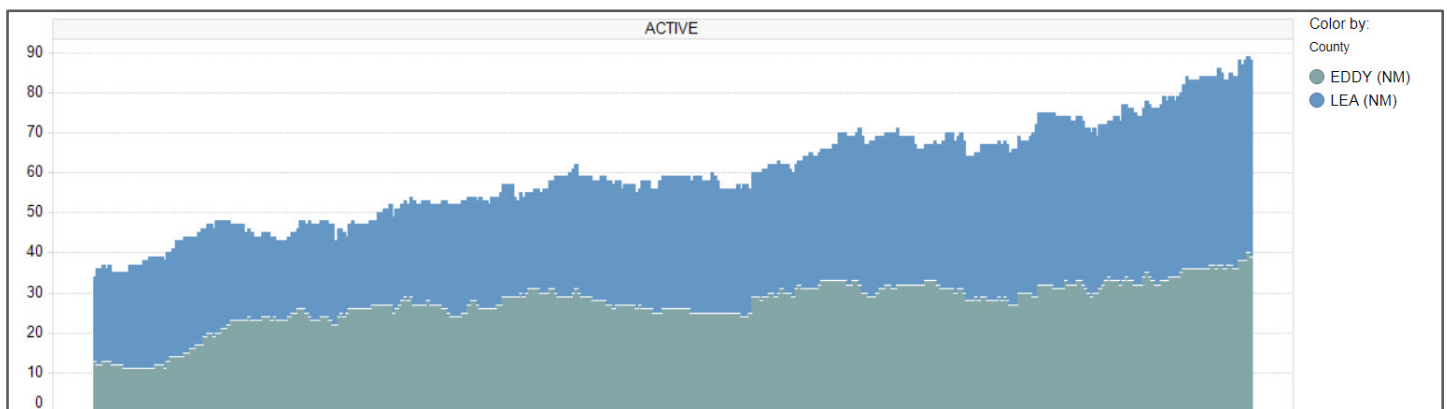
Over 240 Active Rigs in the Delaware Basin. More rigs than any other play.



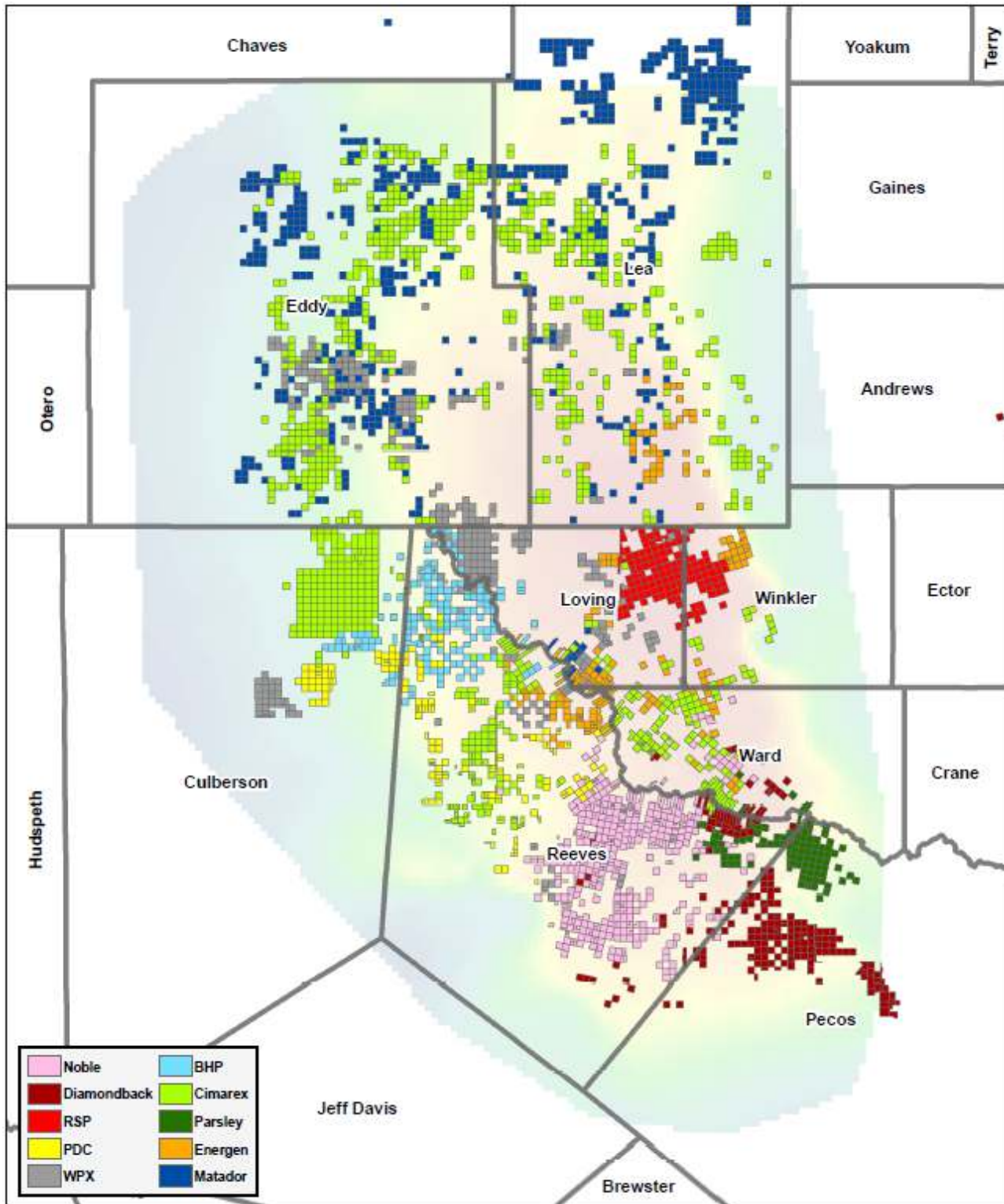
Over 100 additional rigs in the Delaware since the start of 2017.



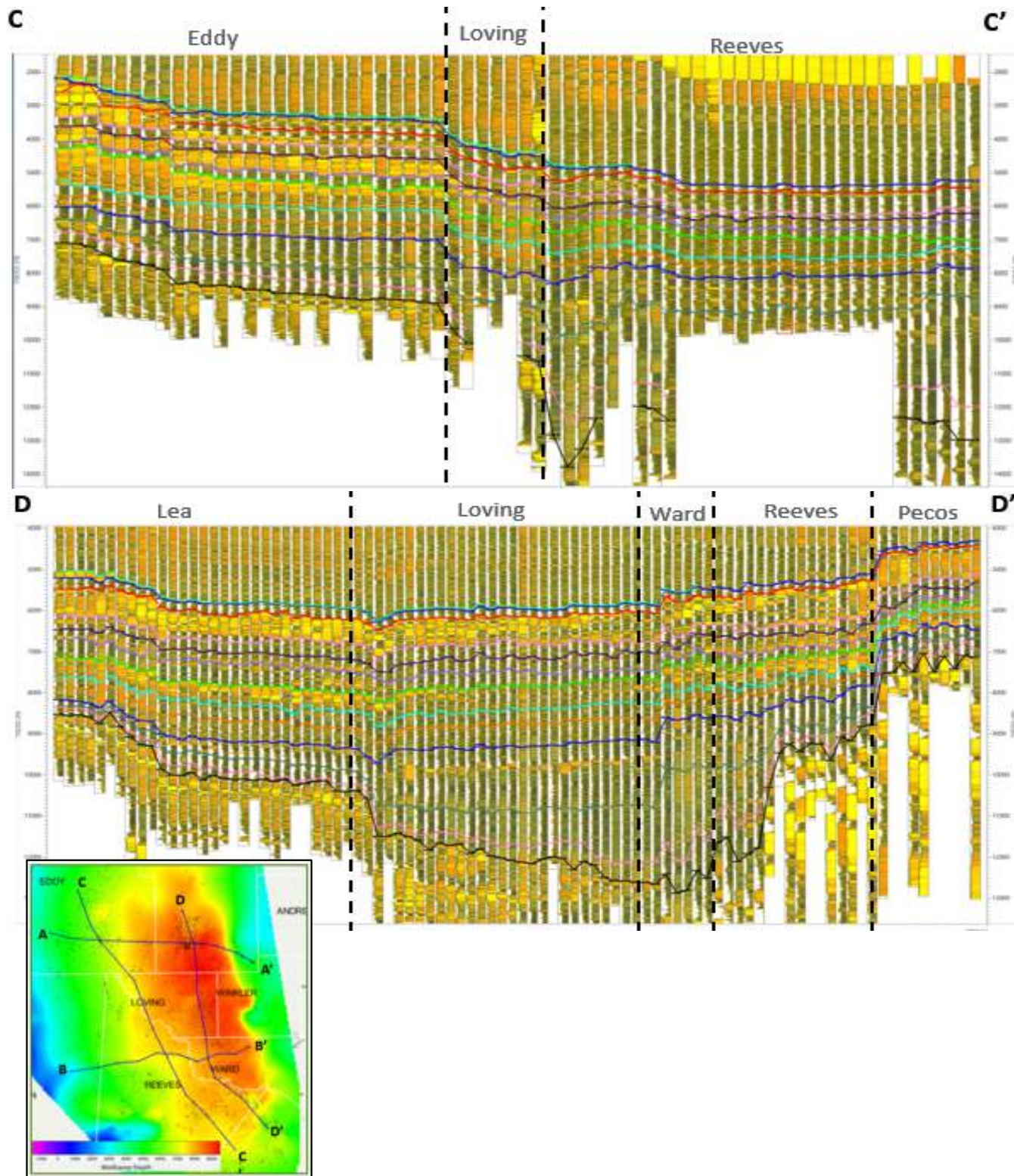
New Mexico rigs have seen the highest percentage increase in the Delaware since the start of 2017.



Mid Cap Operator Positions

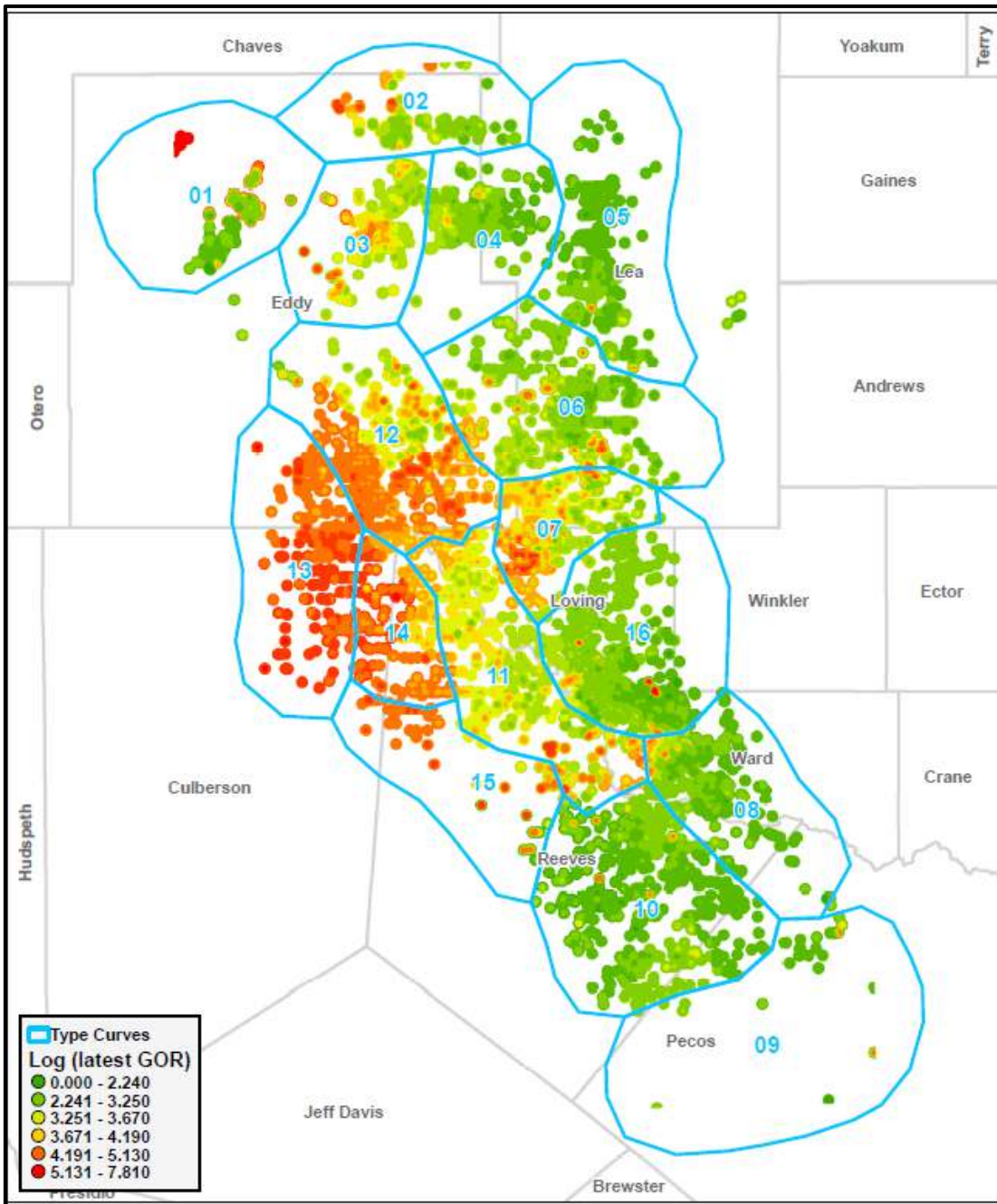


Geological Framework



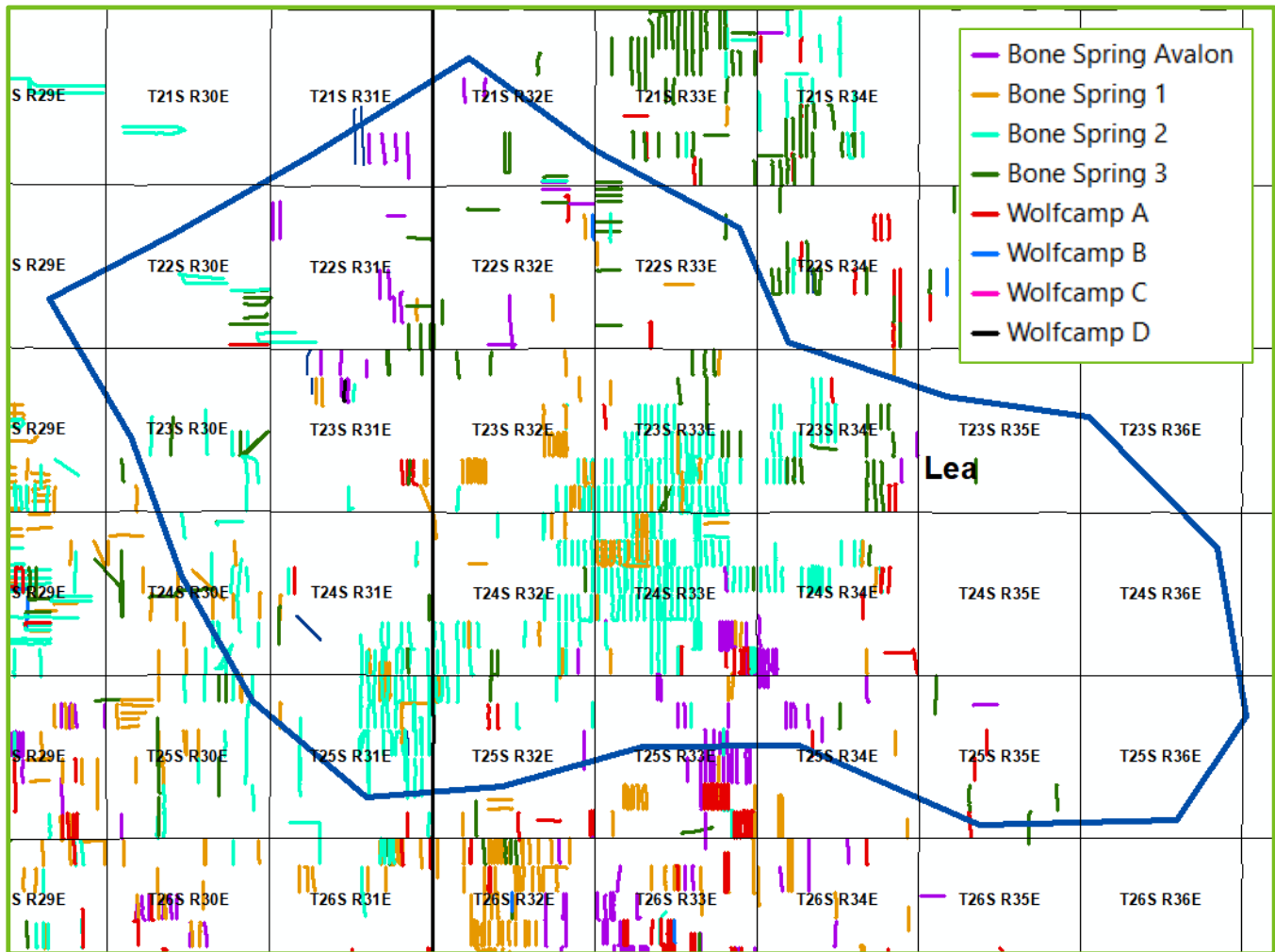
Area Type Curves (TC)

- Incorporating Geological Attributes and GOR for Area Type Curves
- Create and Analyze an Area Type Curve by Geological Formation
- Estimate Individual Well PUD's by Bench
- Analyze Stacked PUD Potential in the Areas



Area 6 Stacked Economics

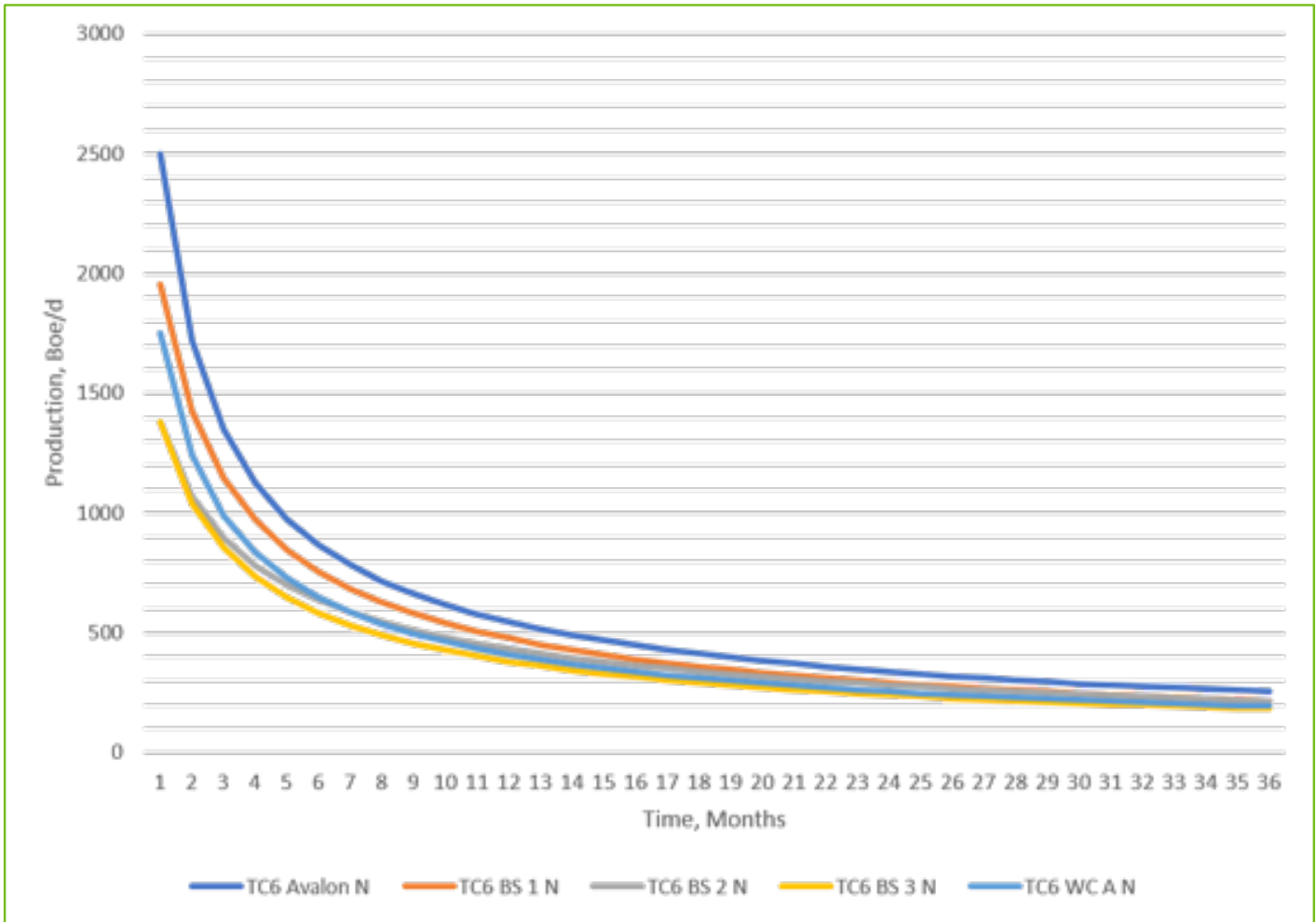
- DI Area Rank: 2 of 16
- 5 Proven Formations
- Average EUR is 1,415 MBBL
- 74% Liquids
- Variable formations being D&C depending on region inside TC
- High percentage of liquids in Bone Spring 3 and Wolfcamp A



Type Curve	DCC Cost	EUR OIL (BBL)	EUR Dry GAS (MCF)	EUR NGL (BBL)	EUR BOE (BBL)	% Liquids	NPV	EBITDA	IRR, %	Gas Breakeven	Oil Breakeven
TC6 Avalon	\$7,290,000	413,040	4,422,377	789,710	1,939,813	62%	\$8,129,849	\$21,237,486	151%	(\$3.25)	\$10.35
TC6 BS 1	\$7,290,000	397,899	3,482,245	621,829	1,600,102	64%	\$6,471,969	\$17,847,754	92%	(\$3.21)	\$16.63
TC6 BS 2	\$7,290,000	741,736	1,769,672	316,013	1,352,694	78%	\$8,533,656	\$25,344,874	86%	(\$12.88)	\$23.44
TC6 BS 3	\$7,290,000	682,136	843,109	150,555	973,210	86%	\$6,864,050	\$20,359,507	75%	(\$21.27)	\$28.83
TC6 WC A	\$8,750,000	704,130	1,455,865	259,976	1,206,750	80%	\$7,033,812	\$21,555,162	63%	(\$12.21)	\$29.46
TC6 Average	\$7,582,000	587,788	2,394,654	427,617	1,414,514	74%	\$7,406,667	\$21,268,957	94%	(\$10.56)	\$21.74

Area 6 Type Curve Overview

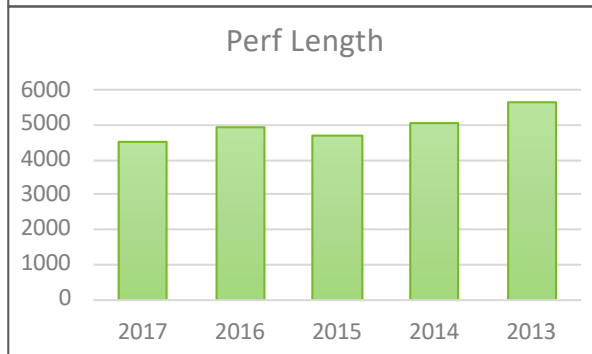
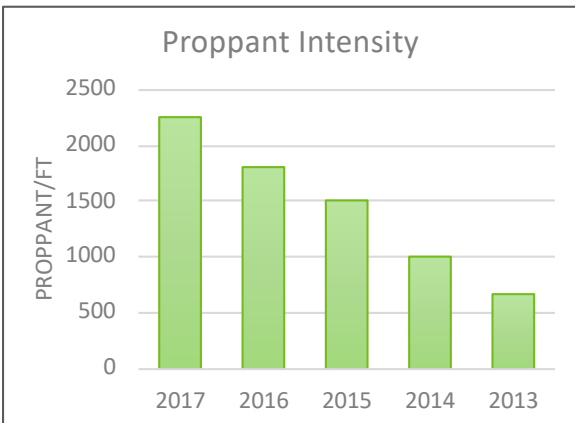
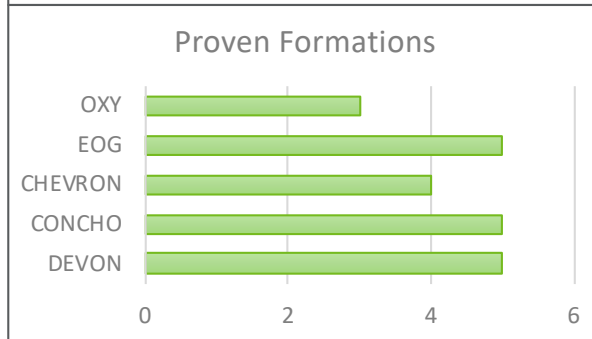
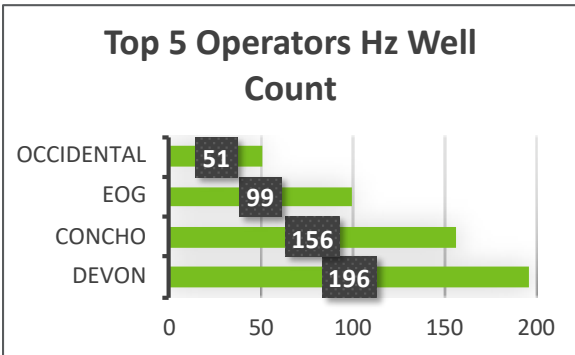
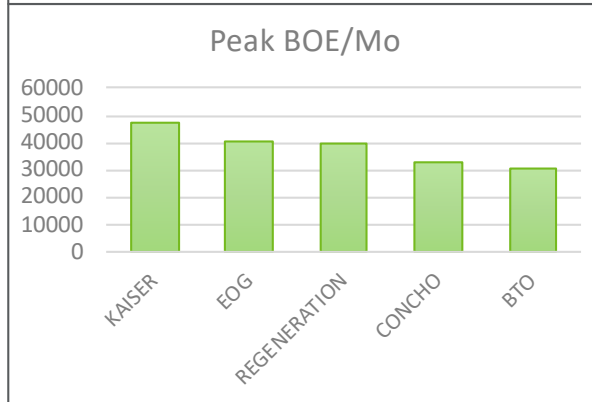
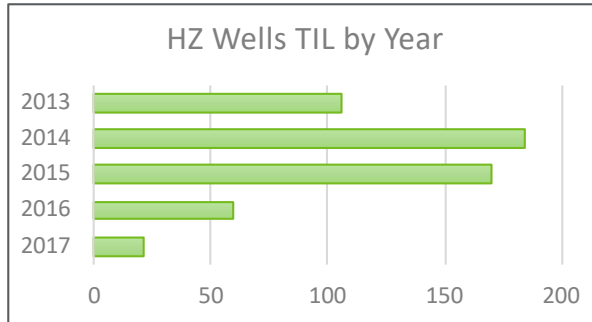
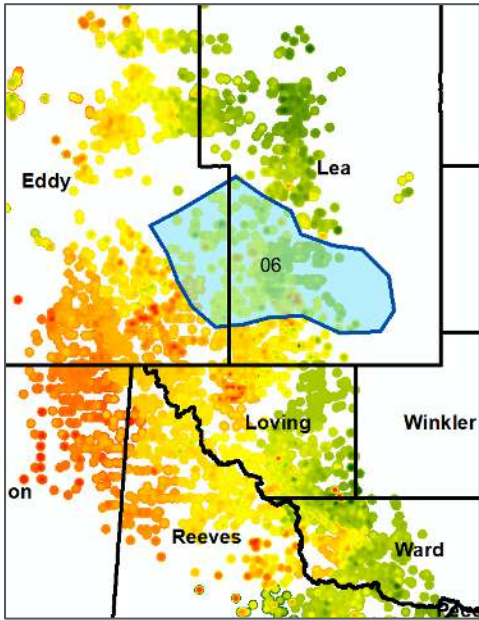
- Proppant intensity is above 1,500 lb/ft for all formations allowing for lower normalization factor



Type Curve	Proppant (lb/ft)	Perf Length (ft)	Norm Factor	Final Norm	IP GAS (MCF)	Gas Di	Gas B Factor	IP OIL (BBL)	Oil Di	Oil B Factor	EUR Dry GAS (MCF)	EUR OIL (BBL)	EUR NGL (BBL)	EUR BOE (BBL)
TC6 Avalon	1,970	4,310	1.38	1.38	3,858	0.10	1.5	1,854	0.62	0.9	4,422,377	413,040	789,710	1,939,813
TC6 BS 1	1,830	5,030	1.29	1.29	3,747	0.13	1.4	1,330	0.52	1.0	3,482,245	397,899	621,829	1,600,102
TC6 BS 2	1,580	4,860	1.40	1.40	1,756	0.10	1.3	1,087	0.38	1.5	1,769,672	741,736	316,013	1,352,694
TC6 BS 3	2,140	5,240	1.18	1.18	1,443	0.18	1.1	1,140	0.40	1.5	843,109	682,136	150,555	973,210
TC6 WC A	1,780	4,110	1.47	1.47	2,506	0.29	1.4	1,331	0.49	1.4	1,455,865	704,130	259,976	1,206,750
TC6 Averages	1,860	4,710	1.35	1.35	2,662	0.16	1.3	1,349	0.48	1.2	2,394,654	587,788	427,617	1,414,514

TC 6 Activity

- Proppant intensity is above 1,500 lb/ft for all formations allowing for lower normalization factor



By monitoring the market, Drillinginfo continuously delivers innovative energy solutions that enable our customers to sustain a competitive advantage in any environment. Drillinginfo customers constantly perform above their competitors because they are more efficient and more proactive than the competition.