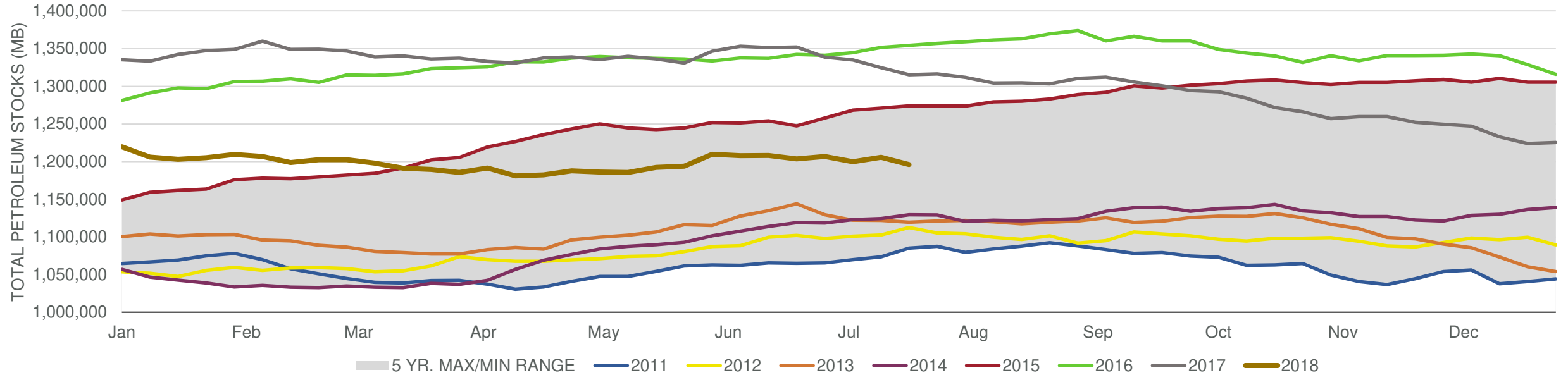


EIA Weekly Petroleum Status Report

Week Ending: 7/20/2018

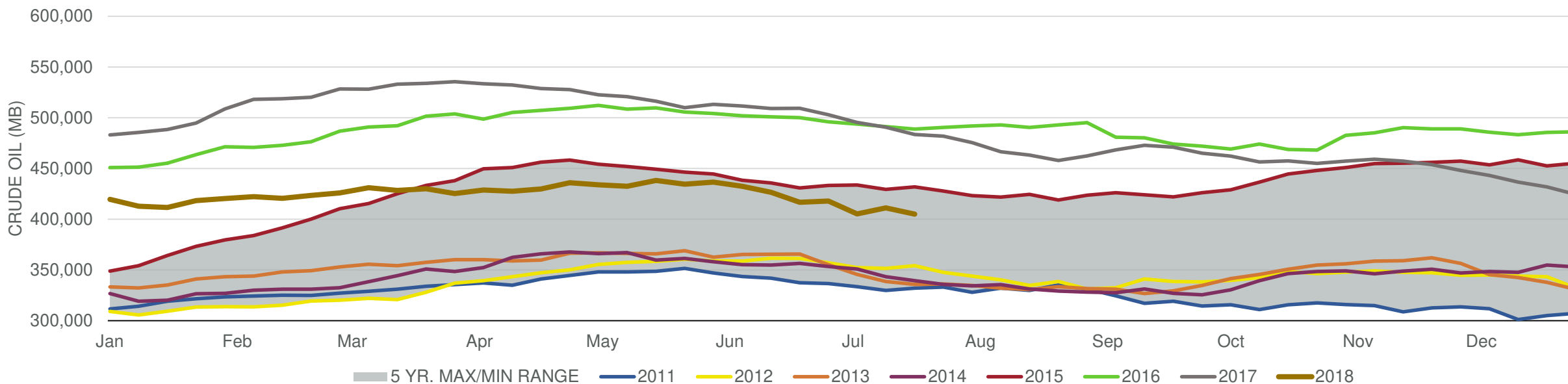
Total Stocks: **-9,729 Mb** Crude Oil Stocks (excl. SPR): **-6,147 Mb** Production: **0 Mbd**

Total Petroleum Stocks



Week Ending	WTI	Change	GC Gaso	Change	NY No 2	Change	Crude	Change	Gaso	Change	Distillate	Change	Kero	Change	Resid	Change	Total Stocks	Change
6/22/2018	\$66.32	\$0.12	\$1.94	(\$0.07)	\$2.07	(\$0.06)	416,636	(9,891)	241,196	1,156	117,423	15	41,944	183	31,193	(430)	1,203,603	(4,560)
6/29/2018	\$74.03	\$7.70	\$2.01	\$0.06	\$2.11	\$0.04	417,881	1,245	239,691	(1,505)	117,557	134	40,965	(979)	29,646	(1,547)	1,206,904	3,301
7/6/2018	\$73.73	(\$0.30)	\$2.06	\$0.06	\$2.14	\$0.04	405,248	(12,633)	238,997	(694)	121,682	4,125	40,269	(696)	27,733	(1,913)	1,199,733	(7,171)
7/13/2018	\$71.96	(\$1.76)	\$2.06	(\$0.01)	\$2.13	(\$0.02)	411,084	5,836	235,832	(3,165)	121,311	(371)	40,768	499	28,076	343	1,205,736	6,003
7/20/2018	\$68.95	(\$3.01)	\$1.99	(\$0.07)	\$2.05	(\$0.08)	404,937	(6,147)	233,504	(2,328)	121,210	(101)	39,785	(983)	28,392	316	1,196,007	(9,729)

Commercial Crude Oil Stocks



Week Ending	WTI	Change	Production	Change	Imports	Change	Exports	Change	Capacity	Inputs	Change	Utilization	Crude Oil Stocks	Change
6/22/2018	\$66.32	\$0.12	10,900	0	8,356	114	3000	626	18,125	17,816	115	97.5%	416,636	(9,891)
6/29/2018	\$74.03	\$7.70	10,900	0	9,055	699	2336	(664)	18,125	17,653	(163)	97.1%	417,881	1,245
7/6/2018	\$73.73	(\$0.30)	10,900	0	7,431	(1,624)	2027	(309)	18,125	17,652	(1)	96.7%	405,248	(12,633)
7/13/2018	\$71.96	(\$1.76)	11,000	100	9,066	1,635	1461	(566)	18,125	17,239	(413)	94.3%	411,084	5,836
7/20/2018	\$68.95	(\$3.01)	11,000	0	7,770	(1,296)	2683	1,222	18,125	17,285	46	93.8%	404,937	(6,147)